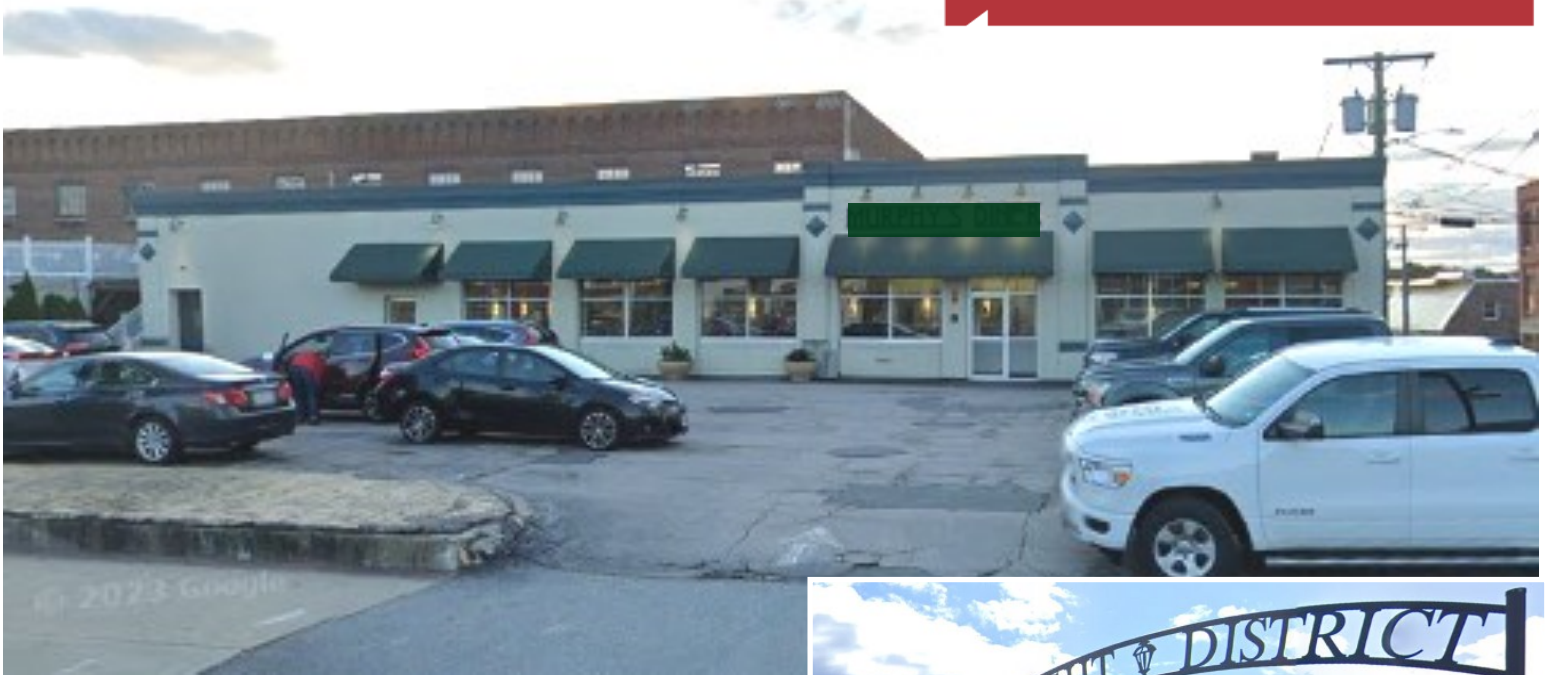


Well Located  
Flexible  
Commercial Space  
For Lease



**516 Elm Street**  
Manchester NH

## Property Features

- 8500± SF
- Over 15,000 VPD
- Municipal Water and Sewer
- Easy access to major roads
- Ample Parking and Signage
- Highly visible location in vibrant downtown



**Lease Rate: \$4500 Per Month NNN**

**Nick Ackerman**  
+1 603 930 0791  
[nackerman@nainorwoodgroup.com](mailto:nackerman@nainorwoodgroup.com)

# 516 Elm Street



Amazing location approximately 8,500±SF. Located across from SNHU Arena and right in vibrant downtown Manchester. Extremely versatile space. Unit 2- Approx 8,500 sf with drive in door and 11' ceilings. Plenty of on site parking. Spaces like this do not come around often.

**Lease Rate: \$4500 Per Month NNN**



**Nick Ackerman**  
+1 603 930 0791  
[nackerman@nainorwoodgroup.com](mailto:nackerman@nainorwoodgroup.com)

Click [here](#) for more information.

**NA**Norwood Group

116 South River Road  
Bedford NH 03110  
+1 603 668 7000  
[nainorwoodgroup.com](http://nainorwoodgroup.com)