



SPACE AVAILABLE

2500 Park Central Blvd

DECATUR, GA 30035

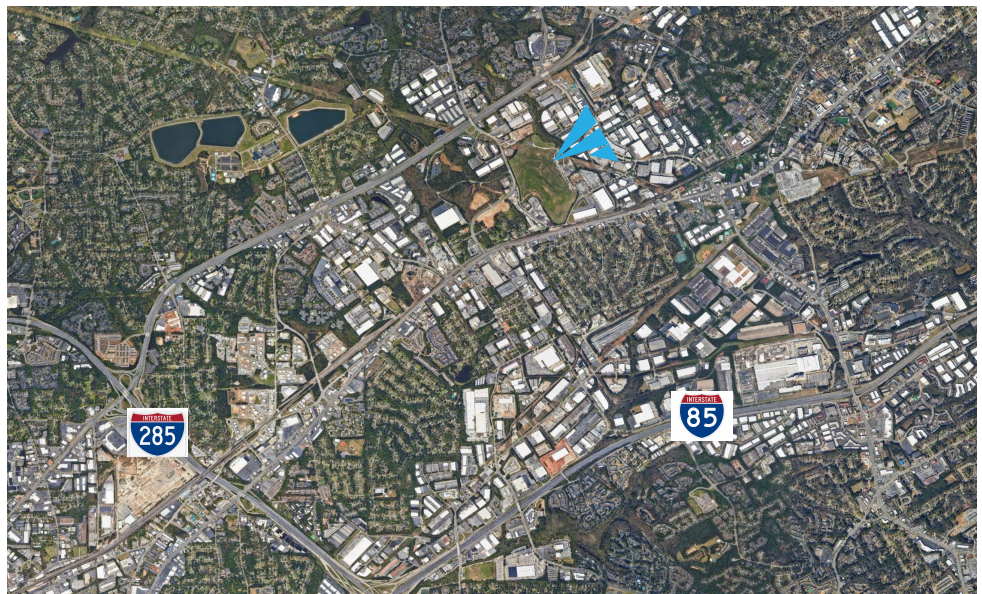


FOR LEASE



PROPERTY HIGHLIGHTS

- Move-In Suites Available
- 18' Minimum Clear Height
- 5,000 - 6,250 SF Available
- Business Park Setting
- Institutional Ownership
- Sprinklered
- Monument Signage
- Direct Access to I-20 + 285
- Dock High + Drive-In Loading



APEX INDUSTRIAL
REAL ESTATE ADVISORS

3500 Lenox Rd NE, Suite 1275 | Atlanta, GA 30326 | apexindustrialre.com

For more information,
please contact:

TREY WEGHORST

Office: (770) 264-9420

Cell: (404) 276-9314

tweghorst@apexindustrialre.com

BRYCE MCCAIN

Office: (404) 595-1552

Cell: (770) 845-3559

bmccain@apexindustrialre.com

Although the information contained therein was provided from sources believed to be reliable, Apex Industrial makes no representation, expressed or implied, as to its accuracy and said information is subject to errors, omissions or changes.

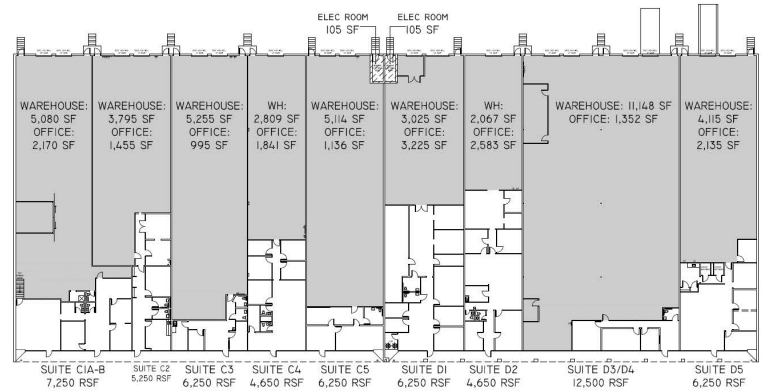
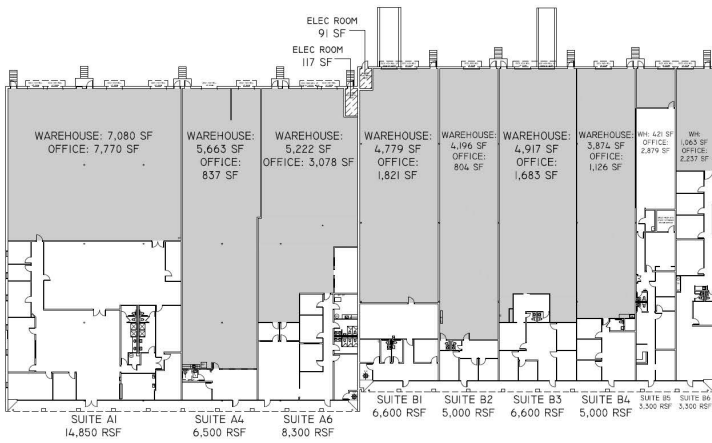


SPACE AVAILABLE

2500 Park Central Blvd

DECATUR, GA 30035

FLOORPLAN



PLANNING U
INTERIORS

I-20 CIRCLE #3,4 • 2500-2520 PARK CENTRAL BLVD, DECATUR • FULL BUILDING • 118,750 RSF



APEX INDUSTRIAL
REAL ESTATE ADVISORS

3500 Lenox Rd NE, Suite 1275 | Atlanta, GA 30326 | apexindustrialre.com

For more information,
please contact:

TREY WEGHORST

Office: (770) 264-9420

Cell: (404) 276-9314

tweghorst@apexindustrialre.com

BRYCE MCCAIN

Office: (404) 595-1552

Cell: (770) 845-3559

bmccain@apexindustrialre.com

Although the information contained therein was provided from sources believed to be reliable, Apex Industrial makes no representation, expressed or implied, as to its accuracy and said information is subject to errors, omissions or changes.