

FOR LEASE

ORMSBY TWO






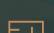

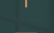
10350 ORMSBY PARK PLACE

LOUISVILLE, KY 40223

PREMIER EAST END
OFFICE SPACE

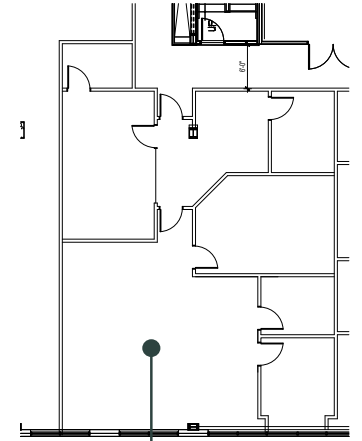
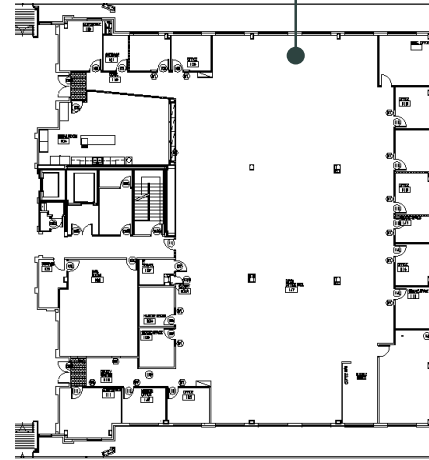
CBRE

PROPERTY FEATURES

-  Premier Class A office development
-  First Floor Suite Available
-  6 stories, plus lower level
-  2,063± - 26,208± SF Available
-  On-site conference facilities
-  On-site coffee shop
-  Generator
-  LEED certified

FIRST FLOOR ±12,300 SF

12,300 ± SF

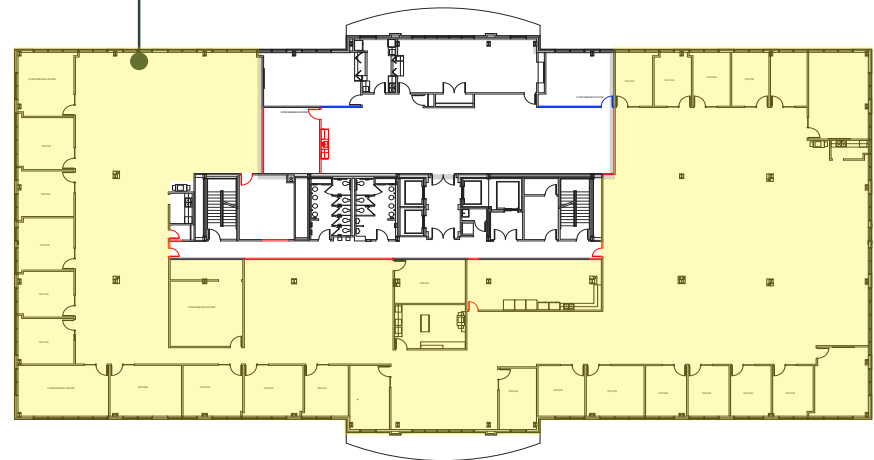


2,063± SF

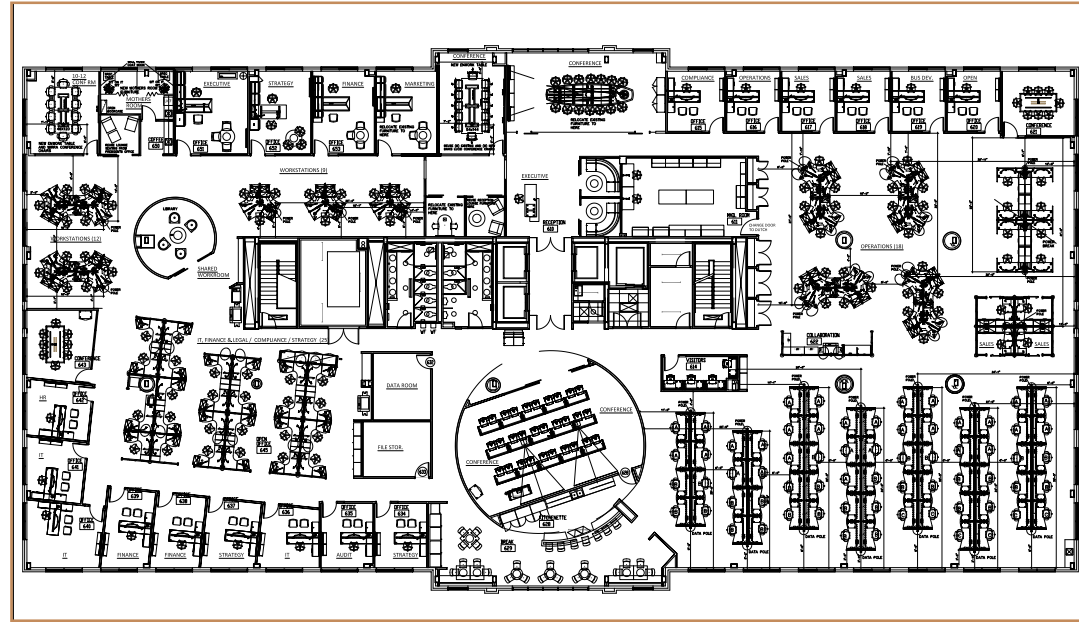
SECOND FLOOR ±2,063 SF

FOURTH FLOOR ±22,201 SF

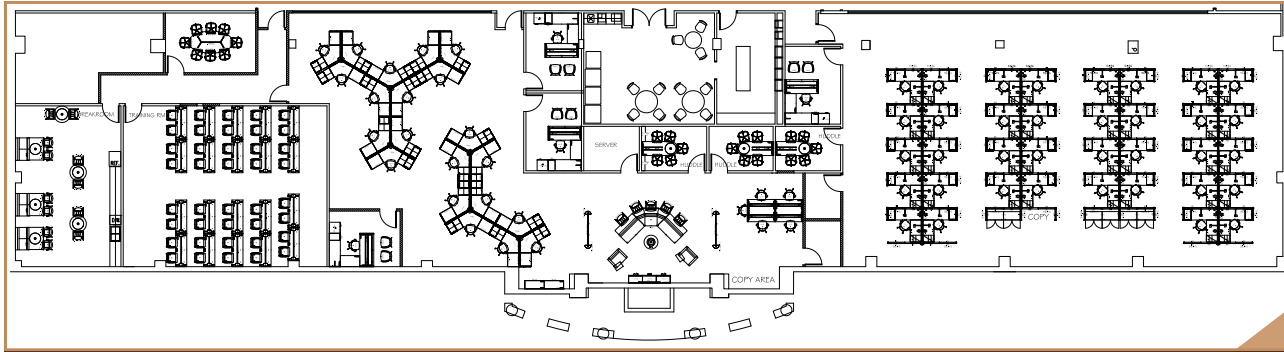
22,201± SF



SIXTH FLOOR ±26,208 SF



LOWER LEVEL ±10,600 SF



ORMSBY TWO

ORMSBY TWO

MICHAEL SOMERVELL, CCIM **DAVID L. HARDY, CCIM**

First Vice President

+1 502 412 7659

michael.somervell@cbre.com

Managing Director

+1 502 412 7644

david.hardy@cbre.com

©2024 CBRE, Inc. All rights reserved. This information has been obtained from sources believed reliable, but has not been verified for accuracy or completeness. You should conduct a careful, independent investigation of the property and verify all information. Any reliance on this information is solely at your own risk. CBRE and the CBRE logo are service marks of CBRE, Inc. All other marks displayed on this document are the property of their respective owners, and the use of such logos does not imply any affiliation with or endorsement of CBRE. Photos herein are the property of their respective owners. Use of these images without the express written consent of the owner is prohibited. PMStudio_May2022

CBRE

