

THE OVIATT BUILDING

617 S OLIVE ST, LOS ANGELES, CA

Creative Office Spaces for Lease in Downtown Los Angeles

Available for immediate occupancy

Centrally-located creative office building in the heart of Downtown LA

Close proximity to additional parking and Metro Station at Pershing Square

Close proximity to many new restaurants, hotels, and retail

Ease of access to the 110, 101, and 10 freeways



SUITE AVAILABILITY

Suite	RSF	Description
204	309 SF	Professional office space (can be combined with suite 206 for 954 SF)
206	645 SF	Professional office space (can be combined with suite 204 for 954 SF)
210	244 SF	Professional office space
308	1,602 SF	Professional office space
500	1,470 SF	Creative office space
507	211 SF	Professional office space
511	949 SF	Professional office space
615	893 SF	Professional office space
707	415 SF	Professional office space

Suite	RSF	Description
811	941 SF	Professional office space
900	1,481 SF	Creative office space
906	587 SF	Professional office space
1004	210 SF	Professional office space
1010	4,760 SF	Creative space
1100	1,517 SF	Creative space
1207	427 SF	Professional office space (can be combined with suite 1210)
1210	3,756 SF	Professional office space (can be combined with suite 1207)

JOHN ANTHONY, SIOR

213.225.7218

john.anthony@kidder.com

LIC N° 01226464

CHRISTOPHER STECK, CCIM

213.225.7231

christopher.steck@kidder.com

LIC N° 01841338

ANTHONYSTECKTEAM.COM

KIDDER.COM

This information supplied herein is from sources we deem reliable. It is provided without any representation, warranty, or guarantee, expressed or implied as to its accuracy. Prospective Buyer or Tenant should conduct an independent investigation and verification of all matters deemed to be material, including, but not limited to, statements of income and expenses. Consult your attorney, accountant, or other professional advisor.



THE OVIATT BUILDING



Property Highlights

206-3,362 SF available

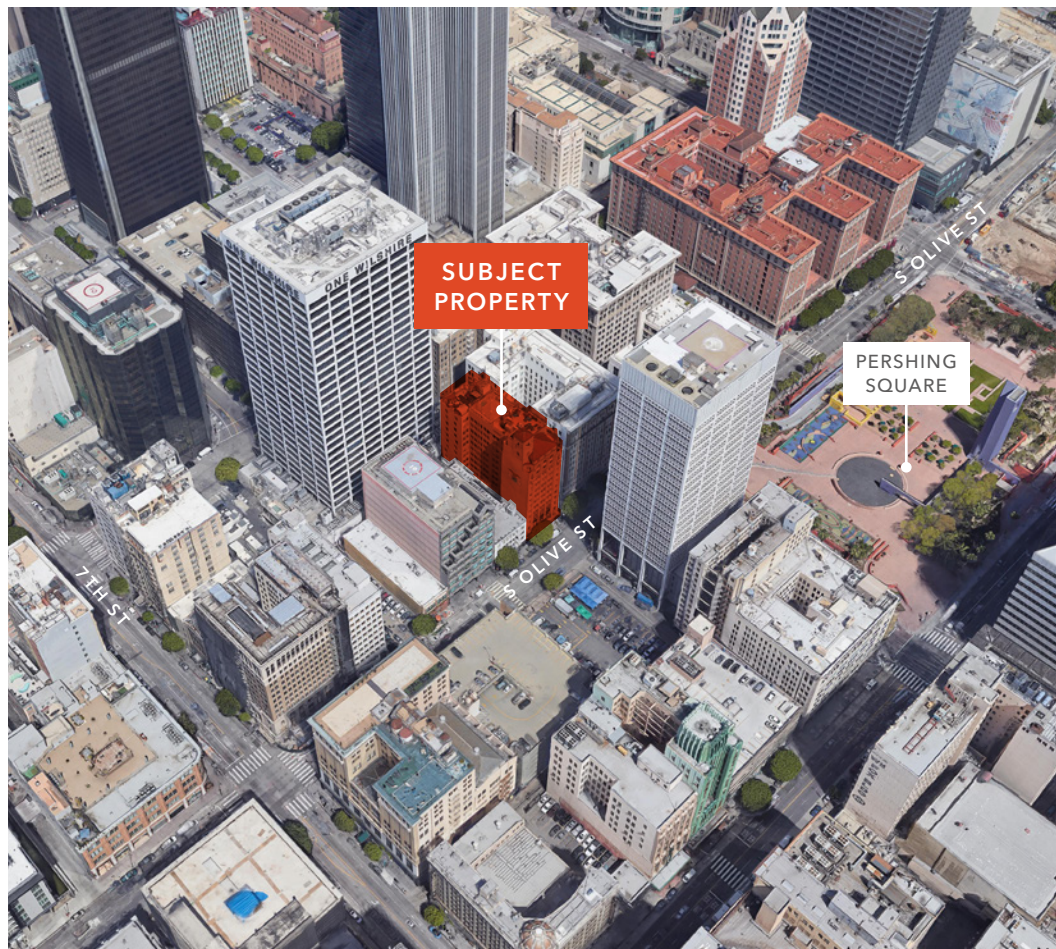
Rental rate is \$2.50-\$2.75/SF FSG

Historic highrise with move-in ready suites

Creative and traditional office spaces

Secured key card elevator access

Penthouse and ground floor restaurant

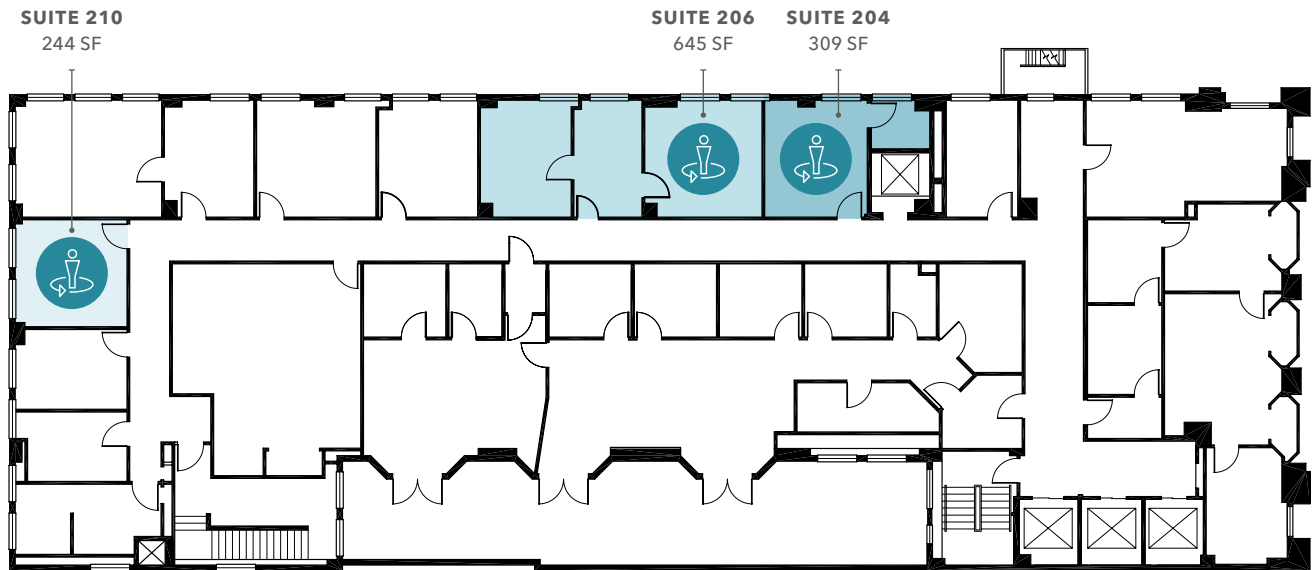


KIDDER.COM | ANTHONYTECKTEAM.COM

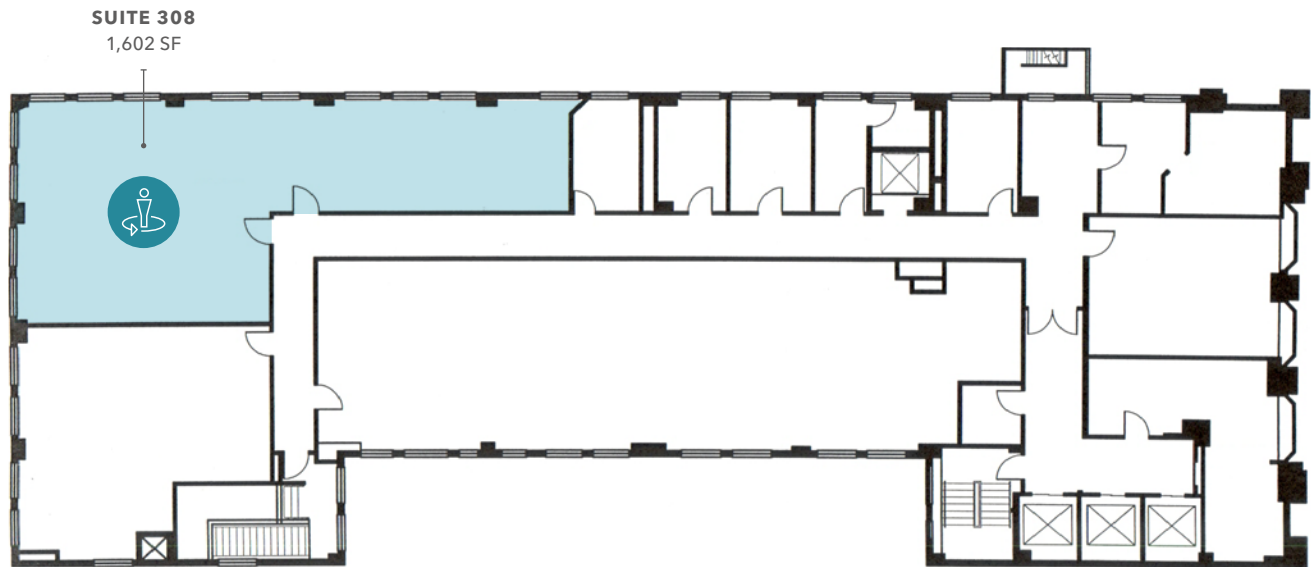
This information supplied herein is from sources we deem reliable. It is provided without any representation, warranty, or guarantee, expressed or implied as to its accuracy. Prospective Buyer or Tenant should conduct an independent investigation and verification of all matters deemed to be material, including, but not limited to, statements of income and expenses. Consult your attorney, accountant, or other professional advisor.



SECOND FLOOR



THIRD FLOOR



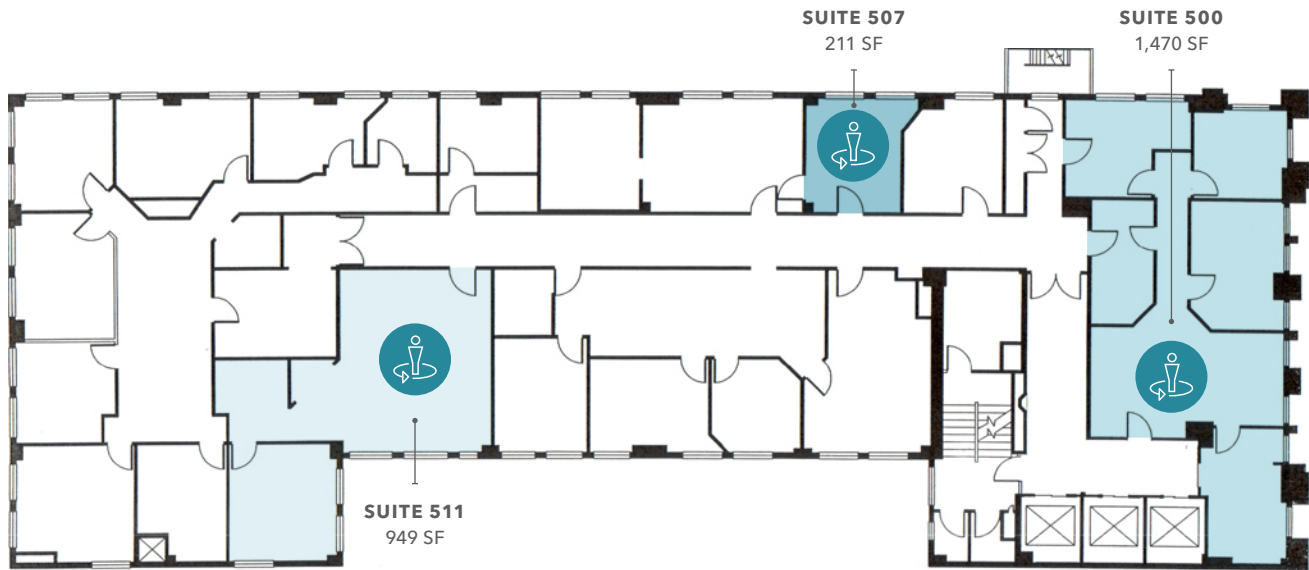
JOHN ANTHONY, sior 213.225.7218 | john.anthony@kidder.com | LIC N° 01226464

CHRISTOPHER STECK, ccim 213.225.7231 | christopher.steck@kidder.com | LIC N° 01841338

KIDDER.COM | ANTHONYSTECKTEAM.COM

This information supplied herein is from sources we deem reliable. It is provided without any representation, warranty, or guarantee, expressed or implied as to its accuracy. Prospective Buyer or Tenant should conduct an independent investigation and verification of all matters deemed to be material, including, but not limited to, statements of income and expenses. Consult your attorney, accountant, or other professional advisor.

FIFTH FLOOR



SIXTH FLOOR



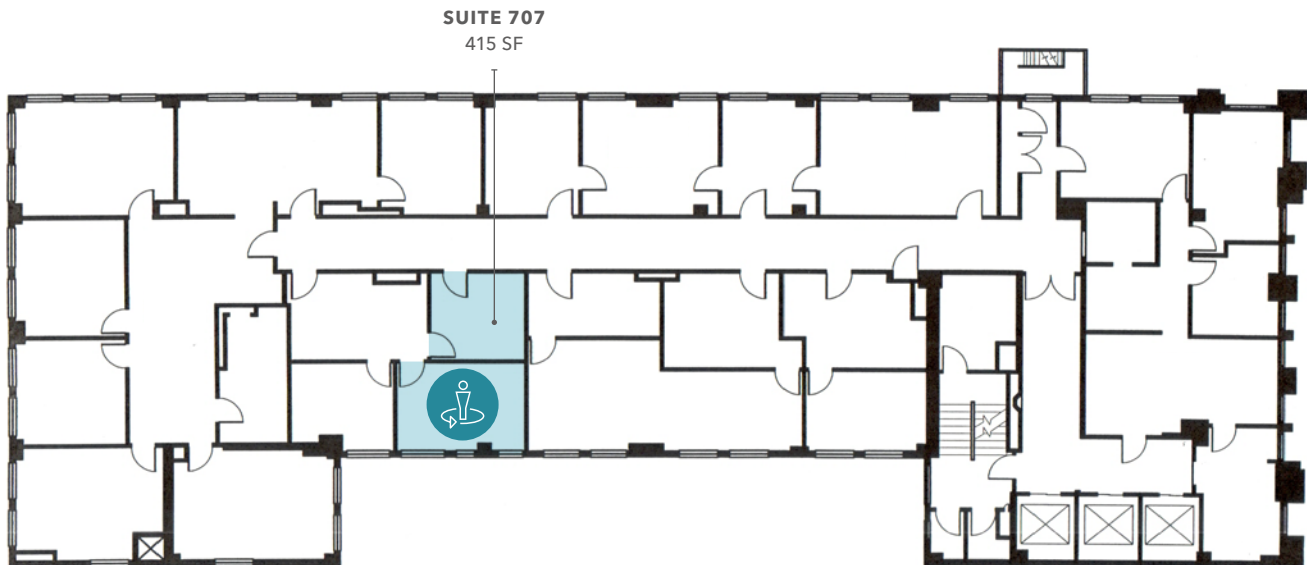
JOHN ANTHONY, sior 213.225.7218 | john.anthony@kidder.com | LIC N° 01226464

CHRISTOPHER STECK, ccim 213.225.7231 | christopher.steck@kidder.com | LIC N° 01841338

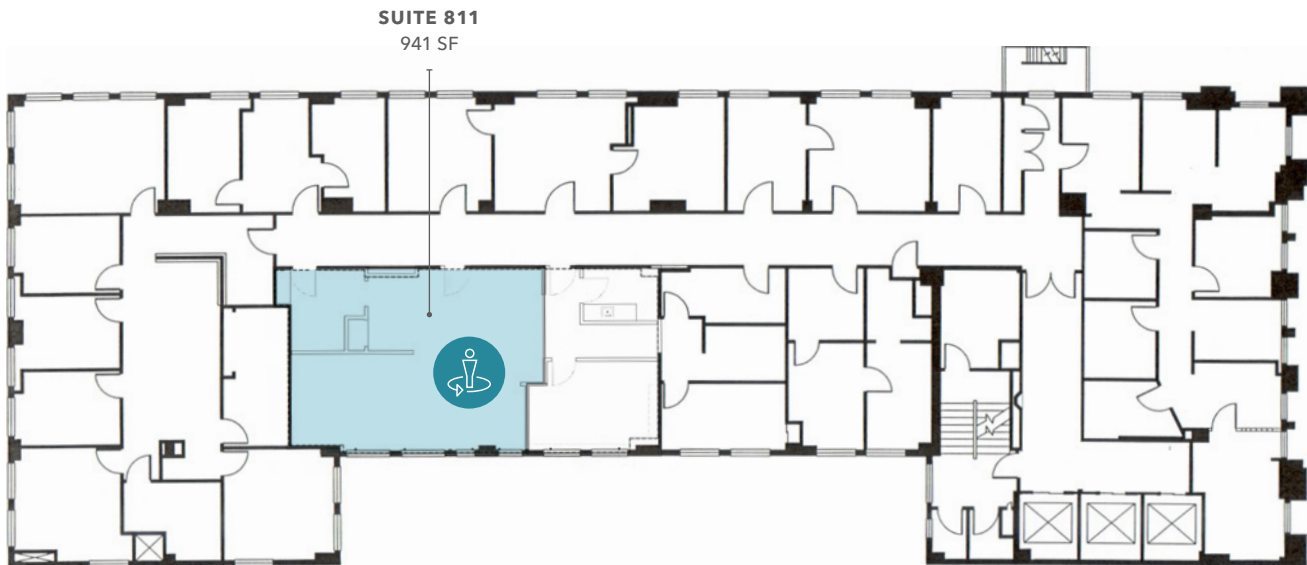
KIDDER.COM | ANTHONYSTECKTEAM.COM

This information supplied herein is from sources we deem reliable. It is provided without any representation, warranty, or guarantee, expressed or implied as to its accuracy. Prospective Buyer or Tenant should conduct an independent investigation and verification of all matters deemed to be material, including, but not limited to, statements of income and expenses. Consult your attorney, accountant, or other professional advisor.

SEVENTH FLOOR



EIGHTH FLOOR



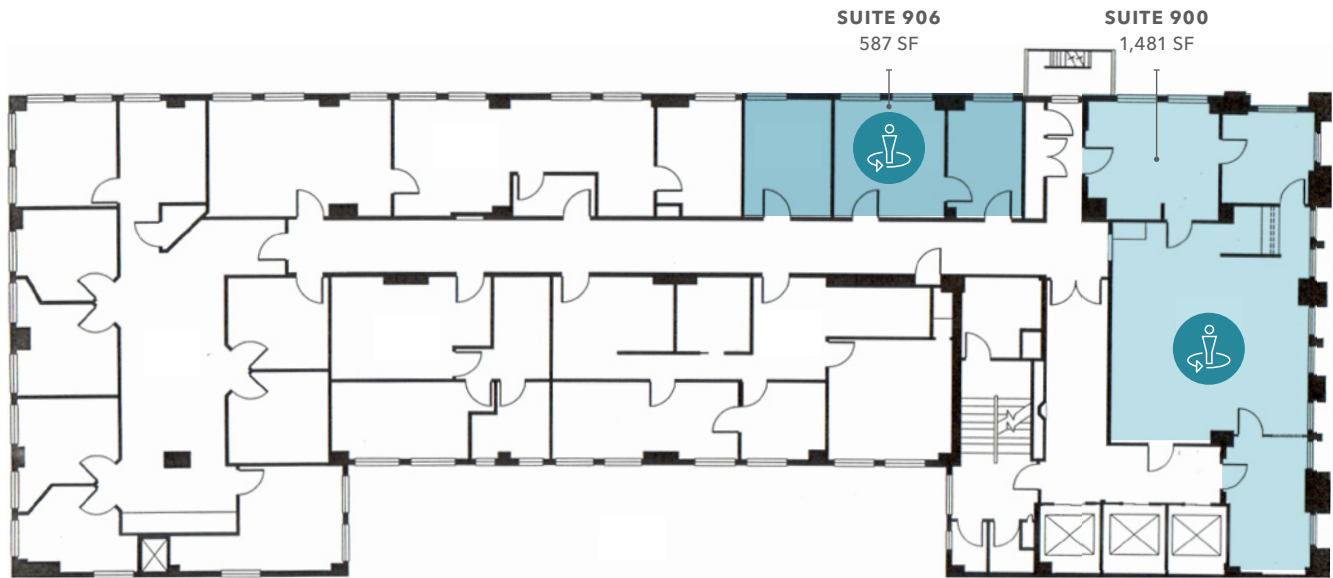
JOHN ANTHONY, sior 213.225.7218 | john.anthony@kidder.com | LIC N° 01226464

CHRISTOPHER STECK, ccim 213.225.7231 | christopher.steck@kidder.com | LIC N° 01841338

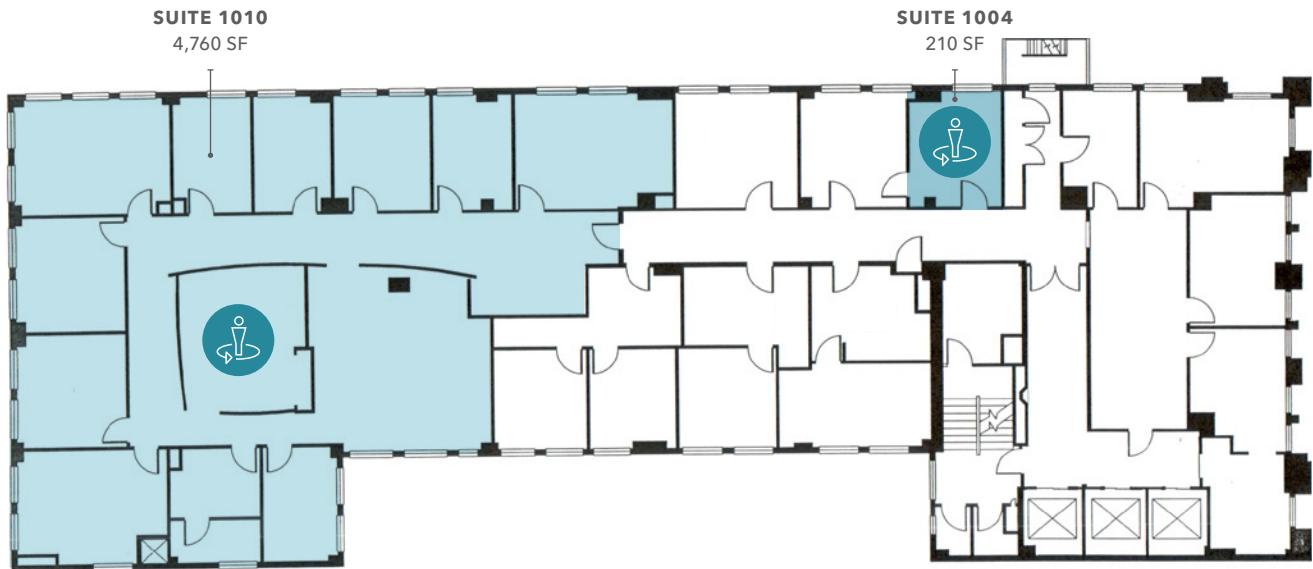
KIDDER.COM | ANTHONYSTECKTEAM.COM

This information supplied herein is from sources we deem reliable. It is provided without any representation, warranty, or guarantee, expressed or implied as to its accuracy. Prospective Buyer or Tenant should conduct an independent investigation and verification of all matters deemed to be material, including, but not limited to, statements of income and expenses. Consult your attorney, accountant, or other professional advisor.

NINTH FLOOR



TENTH FLOOR



JOHN ANTHONY, sior 213.225.7218 | john.anthony@kidder.com | LIC N° 01226464

CHRISTOPHER STECK, ccim 213.225.7231 | christopher.steck@kidder.com | LIC N° 01841338

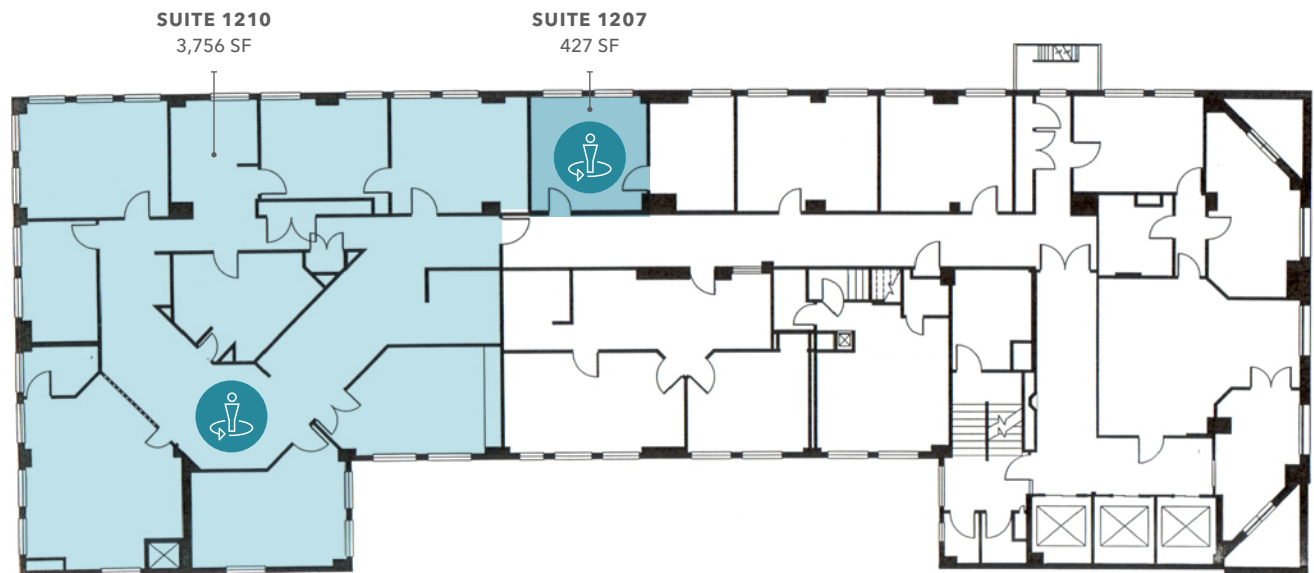
KIDDER.COM | ANTHONYSTECKTEAM.COM

This information supplied herein is from sources we deem reliable. It is provided without any representation, warranty, or guarantee, expressed or implied as to its accuracy. Prospective Buyer or Tenant should conduct an independent investigation and verification of all matters deemed to be material, including, but not limited to, statements of income and expenses. Consult your attorney, accountant, or other professional advisor.

ELEVENTH FLOOR



TWELFTH FLOOR

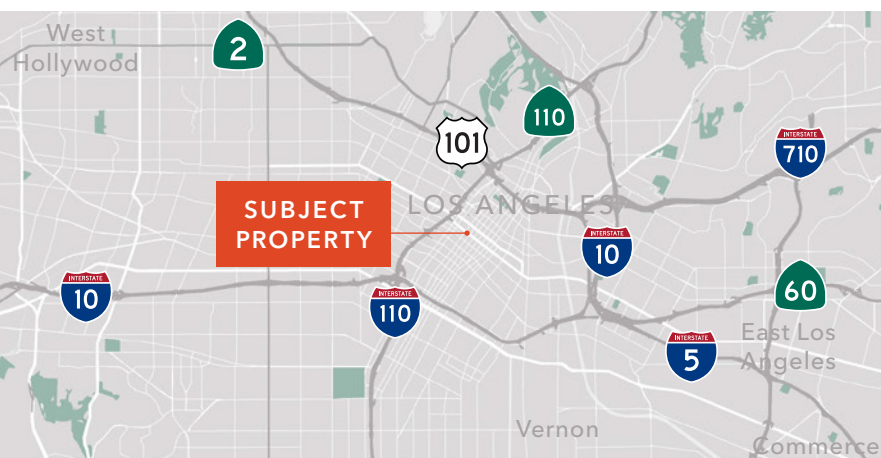


JOHN ANTHONY, sior 213.225.7218 | john.anthony@kidder.com | LIC N° 01226464

CHRISTOPHER STECK, ccim 213.225.7231 | christopher.steck@kidder.com | LIC N° 01841338

KIDDER.COM | ANTHONYSTECKTEAM.COM

This information supplied herein is from sources we deem reliable. It is provided without any representation, warranty, or guarantee, expressed or implied as to its accuracy. Prospective Buyer or Tenant should conduct an independent investigation and verification of all matters deemed to be material, including, but not limited to, statements of income and expenses. Consult your attorney, accountant, or other professional advisor.



THE RENEWAL OF PERSHING SQUARE

Due to the revitalization of several of its neighborhoods, Downtown Los Angeles thrives with a vibrancy never seen in its history. Areas like the Old Bank District and the Historic Core were once filled with vacant buildings; now they're teeming with brand-new apartment buildings, high-end retail shops and restaurants. As a result, businesses are relocating downtown. Population has increased 150% since 2000, and continues to grow at a rapid pace. New downtown destinations like the BLOC, Grand Central Market and FIGat7th draw tourists and locals alike, both day and night.

Pershing Square Park is the heart of Downtown LA. It's also one of the few remaining areas to not receive a facelift. That's about to change. Earlier this year, an international design-team led by the Paris-based Agence Ter were selected to redesign the five-acre park using what they call a "radical flatness" to open up the space, connecting one part of the city to another, offering visitors both entertainment with concert events and relaxation with its great lawn and reflecting pool. Think of it as Central Park on the West Coast.

Other popular venues nearby include Staples Center, Dodger Stadium, Expo Park/USC, The Music Center, and Microsoft Theater.

1-MILE DEMOGRAPHICS



ESTIMATED
POPULATION
67,396



AVERAGE
HH INCOME
\$35,025



DAYTIME
EMPLOYMENT
190,200

JOHN ANTHONY, SIOR
213.225.7218
john.anthony@kidder.com
LIC N° 01226464

CHRISTOPHER STECK, CCIM
213.225.7231
christopher.steck@kidder.com
LIC N° 01841338

KIDDER.COM | ANTHONYSTECKTEAM.COM

This information supplied herein is from sources we deem reliable. It is provided without any representation, warranty, or guarantee, expressed or implied as to its accuracy. Prospective Buyer or Tenant should conduct an independent investigation and verification of all matters deemed to be material, including, but not limited to, statements of income and expenses. Consult your attorney, accountant, or other professional advisor.

