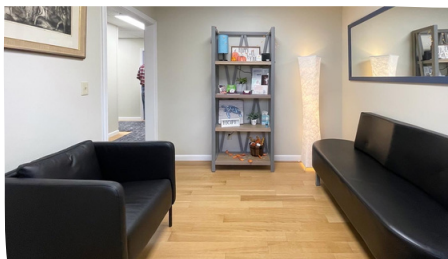




# focusspaces.com

## FOR LEASE

### 14 Maple St, Terryville, CT



- Utilities Included
- Renovated
- WiFi Included

- 24/7 Access
- Security Cameras
- Private Parking

- Keyless Entry
- Kitchenette
- ADA Compliant

**JULIA SOUZA**

C: (917) 676-8461

O: (860) 815-8800

julia@doverbenedictgroup.com

**J-R LALIBERTE**

C: (860) 309-0378

O: (860) 815-8800

jr@doverbenedictgroup.com



All information presented from sources is deemed reliable and is submitted subjected to errors, omissions, change of other terms of conditions, lease or withdrawal-all without notice.





---

# focusspaces.com

**FOR LEASE**

---

Charming stand-alone office building with well-groomed landscaping and a well-lit paved parking lot with wheelchair access ramp and 2 entrances. Snow removal and garbage included in the lease. 3,000 SF building ideal for all professional users in a quiet location.

**JULIA SOUZA**

C: (917) 676-8461

O: (860) 815-8800

julia@doverbenedictgroup.com

**J-R LALIBERTE**

C: (860) 309-0378

O: (860) 815-8800

jr@doverbenedictgroup.com



All information presented from sources is deemed reliable and is submitted subjected to errors, omissions, change of other terms of conditions, lease or withdrawal-all without notice.





## UNIT LL | 1 000 SF | \$1,500

Great space for a tattoo artist, photographer, spa, therapy, and more!  
Ample open room, one office, private restroom and storage space.  
This unit has 2 entrances, one being private. LED Lighting and natural light.  
Move-in ready or built-to-suit option.

**Current Building Tenants: Therapy Group and Midwifery Practice**

### JULIA SOUZA

C: (917) 676-8461

O: (860) 815-8800

julia@doverbenedictgroup.com

### J-R LALIBERTE

C: (860) 309-0378

O: (860) 815-8800

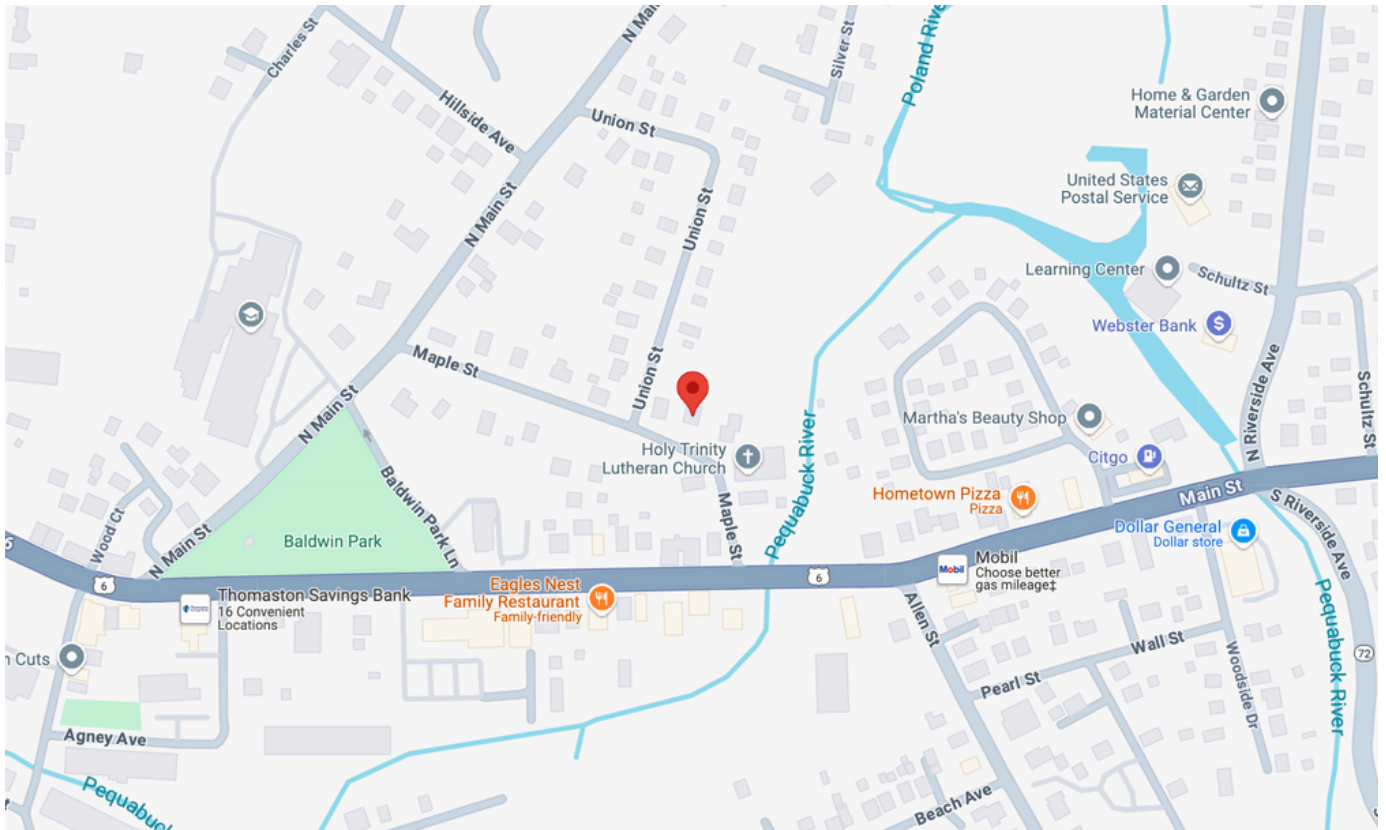
jr@doverbenedictgroup.com



# focusspaces.com

## FOR LEASE

### 14 Maple St, Terryville, CT



## WE HAVE SPACES FOR ANY TYPE OF BUSINESS

Located in central Connecticut, Focus Spaces is a commercial property holdings company focused on offering spaces to businesses of any size within Connecticut.

**OFFICE | RETAIL | MEDICAL | HOSPITALITY | INDUSTRIAL | FLEX | SPECIALTY**

Our vast variety of properties are always renovated with a great amount of pride to create a positive image for all of our tenants.

**focusspaces.com**

40 Callender Rd, Watertown, CT 06795