

# SOUTH POINT BUSINESS PARK

FLEX OFFICE AND WAREHOUSE SPACE | SOUTHWEST CHARLOTTE

2 miles from I-77



## AVAILABILITIES

### Suite F: $\pm 4,100$ SF

Office:  $\pm 2,540$  SF    Clear Height: 18'  
Dock-High Door: 1

- » Available immediately
- » Air-conditioned warehouse
- » Substantial glass



## AVAILABILITIES

### Suite B: $\pm 5,058$ SF

Office:  $\pm 3,159$  SF    Clear Height: 16'  
Drive-in Door: 1

- » Available immediately
- » Air conditioned warehouse



## AVAILABILITIES

### Suite C: $\pm 7,686$ SF

Office:  $\pm 2,338$  SF    Drive-in Door: 1  
Dock Doors: 3    Clear Height: 18'

- » Available immediately
- » Air-conditioned warehouse

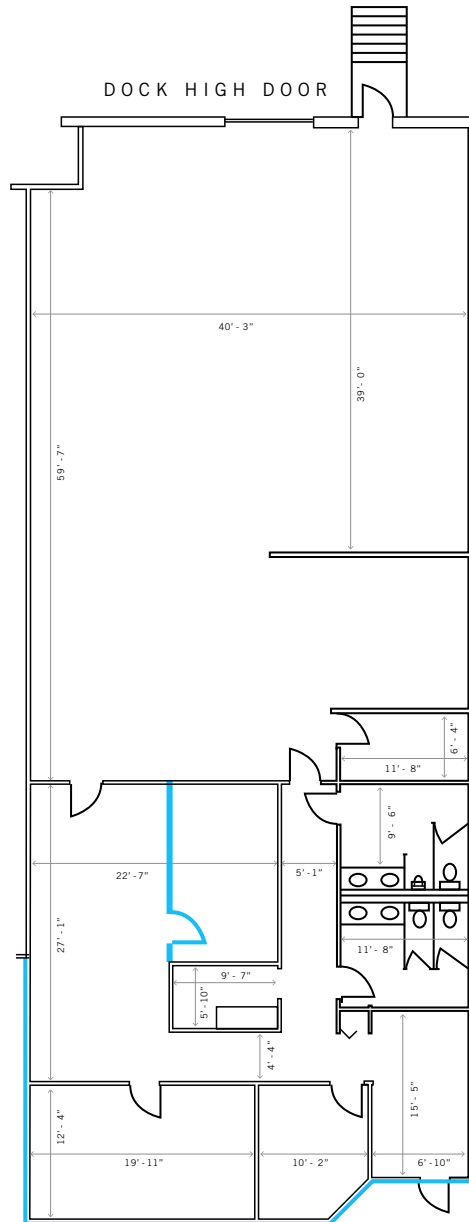
## CONTACT

BILL WOOD | [WPW@TRINITY-PARTNERS.COM](mailto:WPW@TRINITY-PARTNERS.COM) | 704.906.2763

OWNED BY  
**ADLER**  
REAL ESTATE PARTNERS

LEASED BY  
**TRINITY**  
PARTNERS

**13504 SOUTH POINT BOULEVARD | SUITE F - 4,100 RSF TOTAL**



## CONTACT

BILL WOOD | WPW@TRINITY-PARTNERS.COM | 704.906.2763

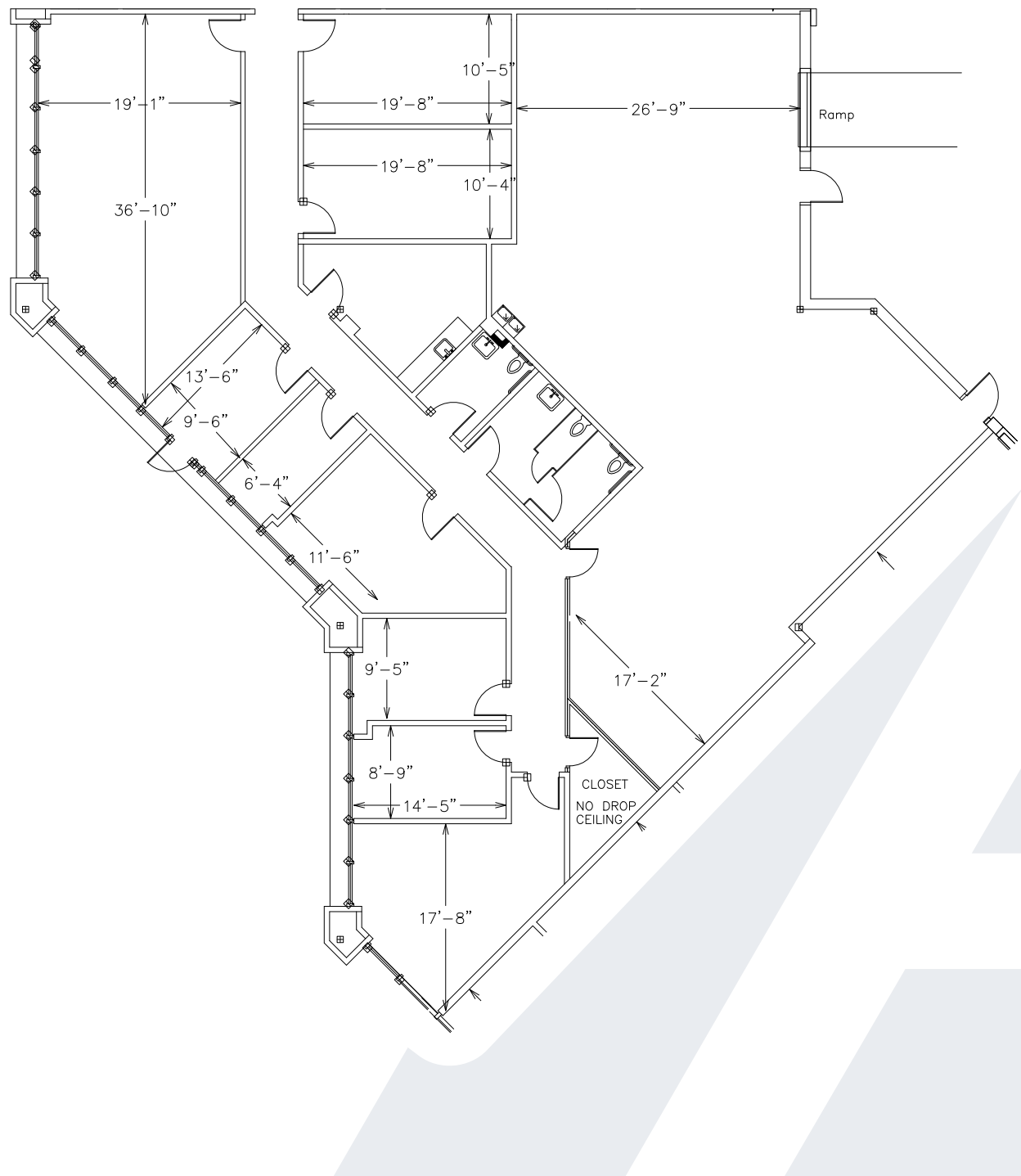
OWNED BY



LEASED BY



13900 SOUTH LAKES DRIVE | SUITE B - 5,058 RSF TOTAL



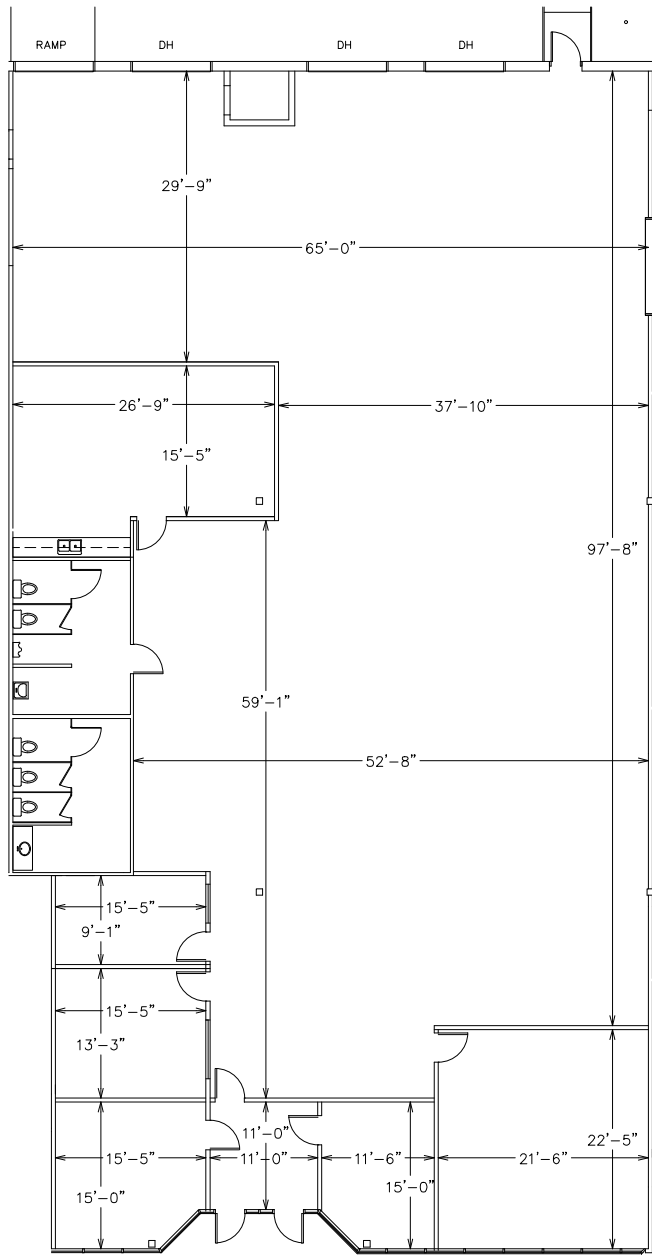
CONTACT

BILL WOOD | WPW@TRINITY-PARTNERS.COM | 704.906.2763

OWNED BY  
**ADLER**  
REAL ESTATE PARTNERS

LEASED BY  
**TRINITY**  
PARTNERS

14201 SOUTH LAKES DRIVE | SUITE C - 7,686 RSF TOTAL



CONTACT

BILL WOOD | WPW@TRINITY-PARTNERS.COM | 704.906.2763

OWNED BY



LEASED BY

