

Skyway West at 31st & Maize Road in Wichita, KS Industrial Lots For Sale

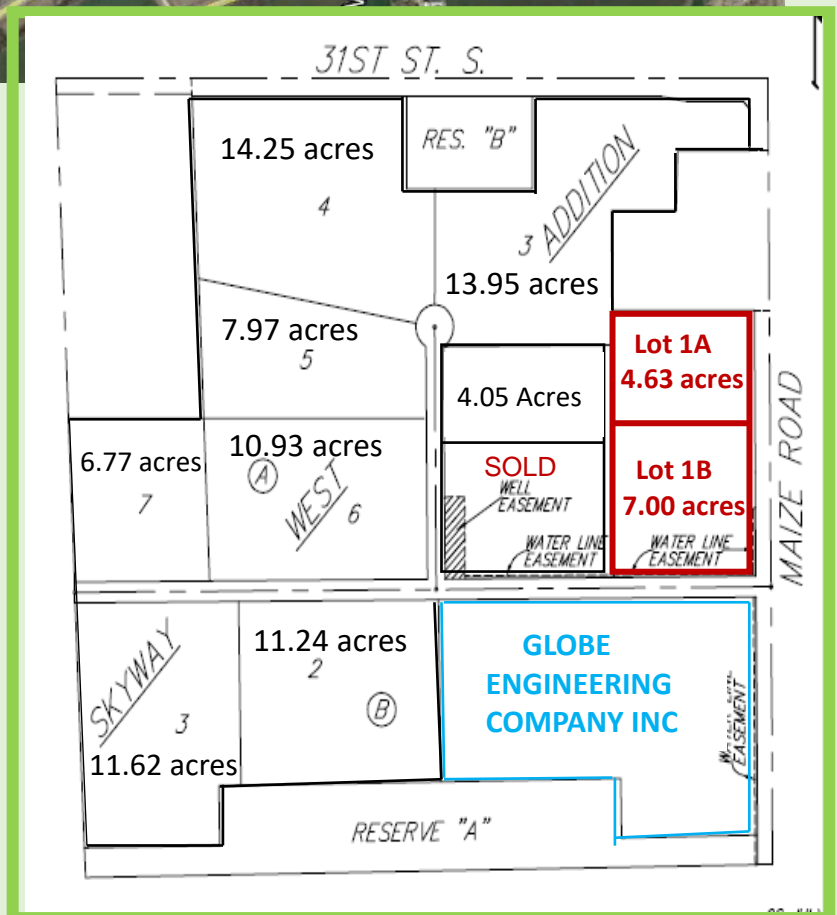


Lot 1A 4.63 acres \$405,000

Lot 1B 7.00 acres \$610,000

**Phase One Improvements
will include water, sewer,
and pavement to the street**

Zoned- Industrial Park



Dwayne Dugan (316) 619-3547 cell

8110 E. 32nd Street No. #150 • Wichita, KS 67226

