

# FOR SALE: ±41.35 AC Potential Rail Spur Site

±4 Miles South of I-40 with Frontage on the North Side of the BNSF Railroad

Sale Price: \$2,875,934



**John S. Filli, SIOR** | john.filli@naihonorizon.com | 602 852 3411

**Cole Neville** | cole.neville@naihonorizon.com | 602 393 6606

**Matt Westra** | matt.westra@naihonorizon.com | 602 393 6667

**Lane Neville** | lane.neville@naihonorizon.com | 602 393 6726

**Brandon Hall** | brandon.hall@naihonorizon.com | 602 393 6668

**Cade Olivas** | cade.olivas@naihonorizon.com | 602 393 6663

All information furnished regarding property for sale, rental or financing is from sources deemed reliable, but no warranty or representation is made to the accuracy thereof and same is submitted subject to errors, omissions, change of price, rental or other conditions prior to sale, lease or financing or withdrawal without notice. No liability of any kind is to be imposed on the broker herein.

**NAI**Horizon

2944 N 44th St, Suite 200, Phoenix, AZ 85018 | +1 602 955 4000 | [naihonorizon.com](http://naihonorizon.com)

# Property Information

+/-41.35 Acre Vacant, Unimproved, Land Site is an Ideal Location for a BNSF Rail Spur

## Features

- Ability to split, combine & reconfigure to meet a Buyer's needs
- The site is also close to various AZTEC-related Development Sites between SR-277 and I-40

## Site Features

- Located ±40 miles north of the ±1,550 AC ARID Industrial Park ±13 miles west of Snowflake, AZ
- Ready access to Elect Power from the nearby Joseph City Cholla Power Plant
- Ready access to Natural Gas via various high-capacity pipelines in the area
- I-40 (4 lane, east-west interstate) is located 40 miles to the north
- Major local employers include: Novo Power, Tri-Star Logging, Cholla Power Plant
- 24-hour average yearly temperature is 57 degrees; 270+ sunny or partly sunny days per year

<b>Location:</b>	Major Cross Streets: Deatly Trail (North) and the BNSF Railroad (South)
<b>Size:</b>	±41.35 Acres (1,801,206 SF)
<b>Price:</b>	\$2,875,934.00 (\$69,551/AC) (\$1.60 PSF)
<b>Conditions of Sale:</b>	No Improvements related to a Sale are to be provided by Lessor/Seller, unless negotiated otherwise. Lessee's signage, if any, is to be provided by lessee at lessee's expense. The total annual lease amount includes an annual CPI increase of 3%. Cash or Terms acceptable to both Buyer and Seller.
<b>Zoning:</b>	GEN-A
<b>Land Use:</b>	Vacant
<b>Utilities</b>	
<b>Electric:</b>	N/A
<b>Gas:</b>	Natural
<b>Water:</b>	Well
<b>Sewer:</b>	None
<b>APN #:</b>	106-12-010

2024 Demographics	10 Miles	30 Miles
Number of Households	44	3,633
Persons per Household	3.00	2.63
Average HH Income	\$73,418	\$76,919
Median Age	43.2	40.5
Median Home Value	\$175,000	\$206,663

**John S. Filli, SIOR** | john.filli@naihorizon.com | 602 852 3411

**Cole Neville** | cole.neville@naihorizon.com | 602 393 6606

**Matt Westra** | matt.westra@naihorizon.com | 602 393 6667

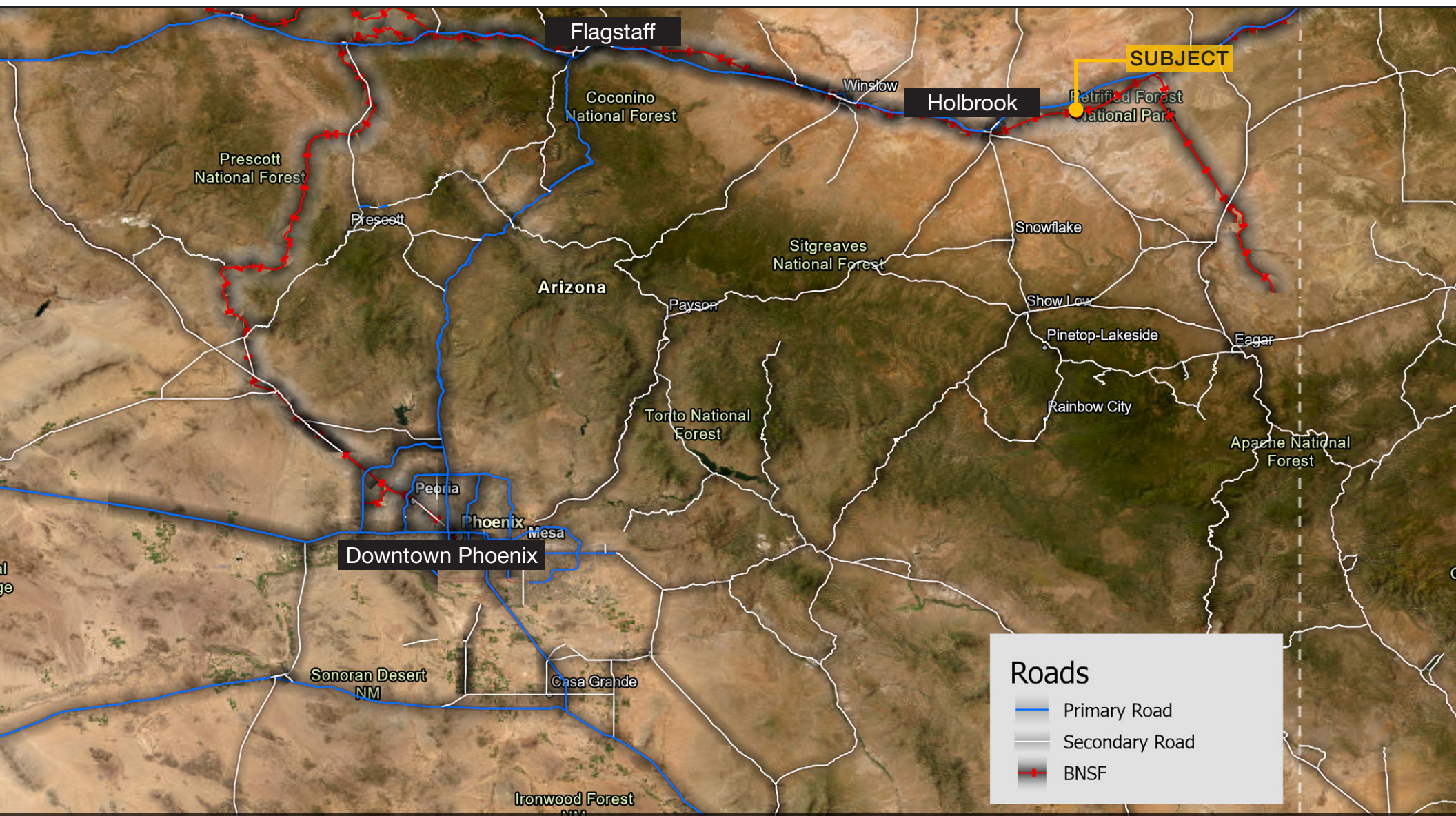
**Lane Neville** | lane.neville@naihorizon.com | 602 393 6726

**Brandon Hall** | brandon.hall@naihorizon.com | 602 393 6668

**Cade Olivas** | cade.olivas@naihorizon.com | 602 393 6663



# ROAD MAP ±41.35 ACRES



**John S. Fili, SIOR** | john.fili@naihonorizon.com | 602 852 3411

**Cole Neville** | cole.neville@naihonorizon.com | 602 393 6606

**Matt Westra** | matt.westra@naihonorizon.com | 602 393 6667

**Lane Neville** | lane.neville@naihonorizon.com | 602 393 6726

**Brandon Hall** | brandon.hall@naihonorizon.com | 602 393 6668

**Cade Olivas** | cade.olivas@naihonorizon.com | 602 393 6663

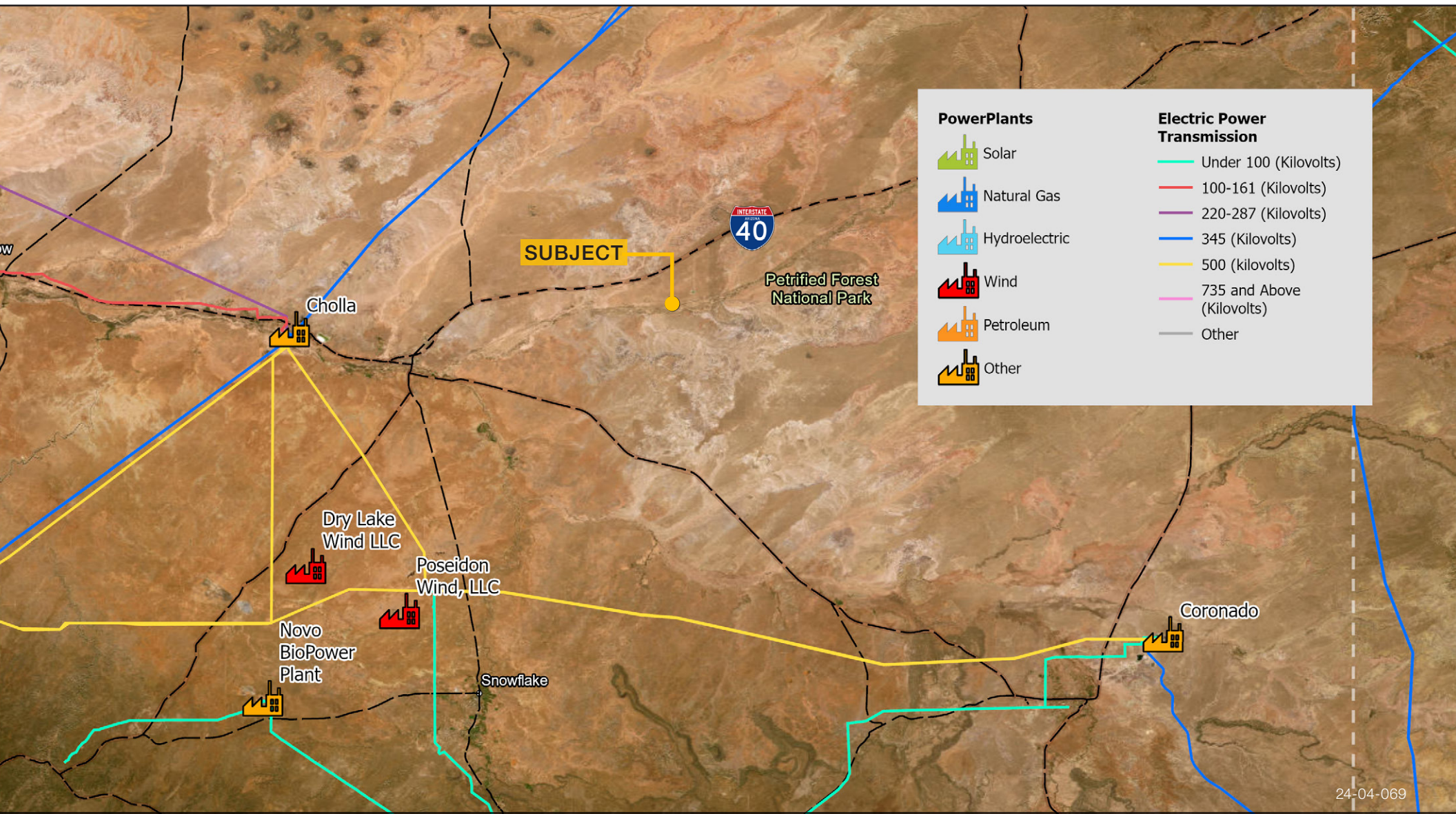
All information furnished regarding property for sale, rental or financing is from sources deemed reliable, but no warranty or representation is made to the accuracy thereof and same is submitted subject to errors, omissions, change of price, rental or other conditions prior to sale, lease or financing or withdrawal without notice. No liability of any kind is to be imposed on the broker herein.

**NAI**Horizon

2944 N 44th St, Suite 200, Phoenix, AZ 85018 | +1 602 955 4000 | [naihonorizon.com](http://naihonorizon.com)



# POWER PLANT MAP



**John S. Filli, SIOR** | john.filli@naihorizon.com | 602 852 3411

**Cole Neville** | cole.neville@naihorizon.com | 602 393 6606

**Matt Westra** | matt.westra@naihorizon.com | 602 393 6667

**Lane Neville** | lane.neville@naihorizon.com | 602 393 6726

**Brandon Hall** | brandon.hall@naihorizon.com | 602 393 6668

**Cade Olivas** | cade.olivas@naihorizon.com | 602 393 6663

All information furnished regarding property for sale, rental or financing is from sources deemed reliable, but no warranty or representation is made to the accuracy thereof and same is submitted subject to errors, omissions, change of price, rental or other conditions prior to sale, lease or financing or withdrawal without notice. No liability of any kind is to be imposed on the broker herein.

**NAI**Horizon

2944 N 44th St, Suite 200, Phoenix, AZ 85018 | +1 602 955 4000 | [naihorizon.com](http://naihorizon.com)