



Winter Garden Regional Medical Building

14237 W COLONIAL DR, WINTER GARDEN, FL 34787

Property Overview

The Winter Garden Regional Medical building has officially Broken Ground, and will be delivered late Q1 of 2026. This new construction Medical Office building is available for lease at 14237 W Colonial Dr, Winter Garden, FL, 34787. This highly visible free-standing property offers a prime opportunity with a NNN lease, ideal for medical office use, and features a cold dark shell delivery for a customizable buildout. Boasting approximately 2,350 sqft of space, this new construction presents a modern environment for businesses to thrive in. Whether for a short-term or long-term lease, this property is ready to accommodate your needs. Don't miss out on this exceptional opportunity to establish your presence in the rapidly growing Winter Garden Sub-

FOR MORE INFORMATION | [MILLENNIA-PARTNERS.COM](https://www.millenia-partners.com)

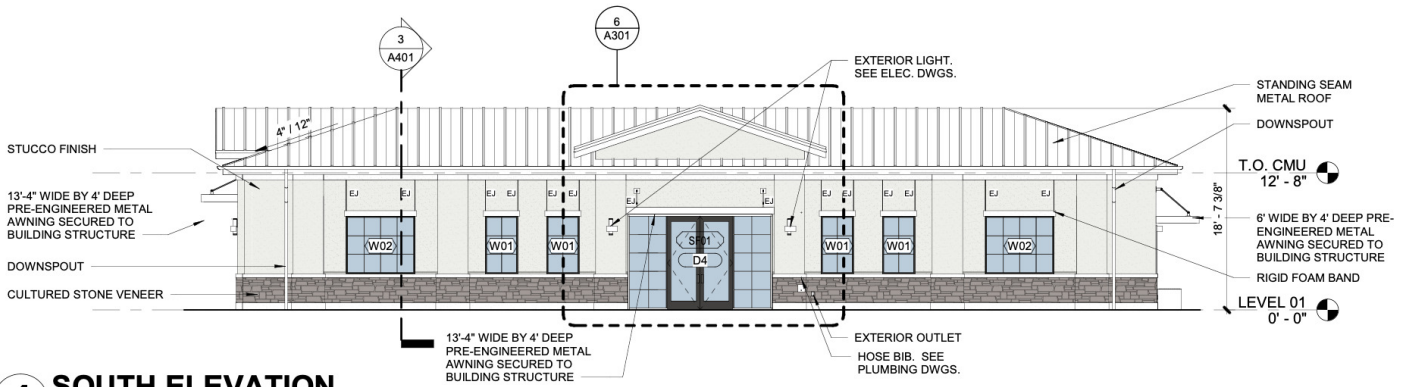
PRESENTED BY
JOSIAH MOORE

407.304.8485
jmoore@millenia-partners.com



EXECUTIVE SUMMARY

14237 W COLONIAL DR, WINTER GARDEN, FL 34787
Winter Garden Regional Medical Building



4 SOUTH ELEVATION
1/8" = 1'-0"

OFFERING SUMMARY

Lease Rate:	\$36.00 SF/yr (NNN)
Building Size:	2,350 SF
Use:	Medical/Professional
Lot Size:	11,081 SF
Year Built:	Q 2 2026
Zoning:	C-2
Parking:	9
Submarket:	Winter Garden
Traffic Count:	37,500 ADT

LOCATION OVERVIEW

This under-construction free-standing MOB benefits from direct frontage on West Colonial Drive and is situated directly adjacent to the Winter Garden Regional Shopping Center. The property provides the visibility a notable medical practice or business executive desires, with an average daily traffic count of over 37,000 vehicles per day. The location of the new construction building allows practitioners to directly market their practice to potential clientele, due to the direct frontage on West Hwy-50.

PROPERTY HIGHLIGHTS

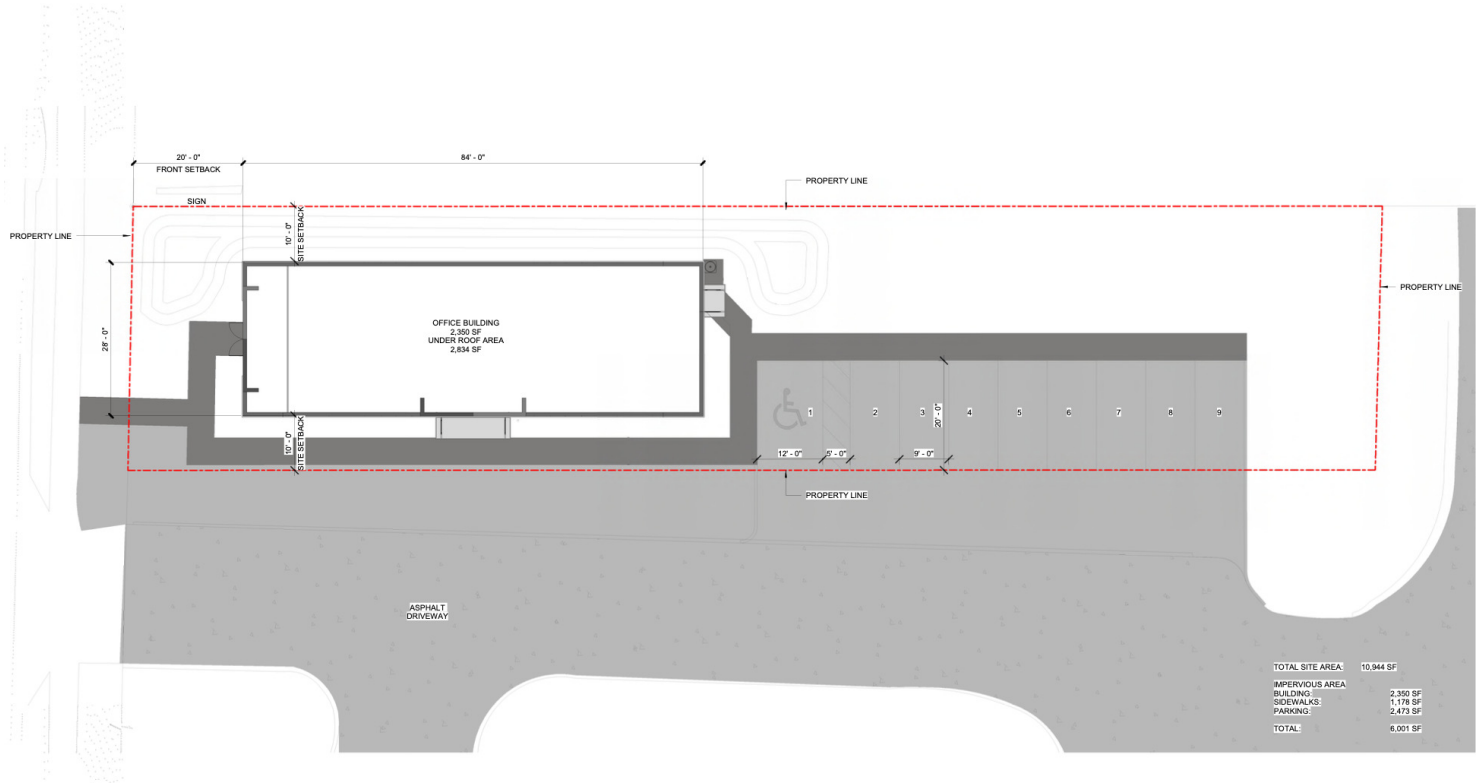
- \$36.00 SF NNN
- Modern Medical Office Building
- Cold Dark Shell Delivery, with substantial TI Allowance
- 2,350 +/- ft Premises
- New Construction delivered in early 2026
- 10 yr term

PRESENTED BY
JOSIAH MOORE
407.304.8485
jmoore@millenia-partners.com

OFFICE BUILDING
For Lease

SITE PLAN

14237 W COLONIAL DR, WINTER GARDEN, FL 34787
Winter Garden Regional Medical Building



PRESENTED BY
JOSIAH MOORE
407.304.8485
jmoore@millenia-partners.com

OFFICE BUILDING
For Lease

ADDITIONAL PHOTOS

14237 W COLONIAL DR, WINTER GARDEN, FL 34787
Winter Garden Regional Medical Building



PRESENTED BY
JOSIAH MOORE
407.304.8485
jmoore@millenia-partners.com

OFFICE BUILDING
For Lease

MARKET MAP

14237 W COLONIAL DR, WINTER GARDEN, FL 34787
Winter Garden Regional Medical Building



Google

Map data
©2024

PRESENTED BY
JOSIAH MOORE
407.304.8485
jmoore@millenia-partners.com

OFFICE BUILDING
For Lease

DEMOGRAPHICS MAP & REPORT

14237 W COLONIAL DR, WINTER GARDEN, FL 34787
Winter Garden Regional Medical Building



POPULATION

	1 MILE	2 MILES	3 MILES
Total Population	11,213	29,466	49,997
Average Age	40	40	40
Average Age (Male)	38	39	38
Average Age (Female)	41	41	41

HOUSEHOLDS & INCOME

	1 MILE	2 MILES	3 MILES
Total Households	4,279	10,569	17,321
# of Persons per HH	2.6	2.8	2.9
Average HH Income	\$103,851	\$121,292	\$135,799
Average House Value	\$421,900	\$480,295	\$508,567

Demographics data derived from AlphaMap

PRESENTED BY
JOSIAH MOORE
407.304.8485
jmoore@millenia-partners.com

OFFICE BUILDING
For Lease