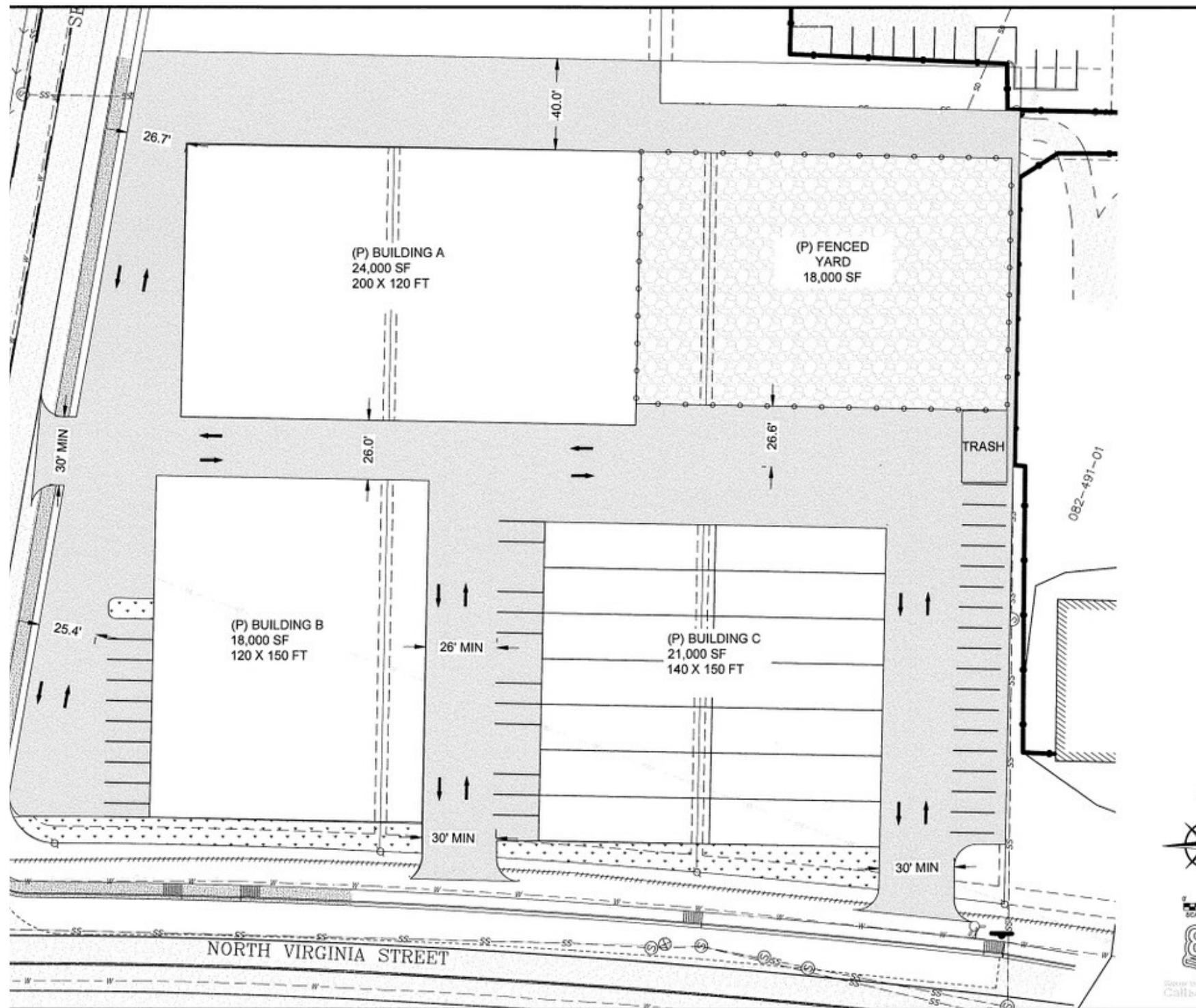


# Security Circle Industrial Park

Coming 2023



## Industrial

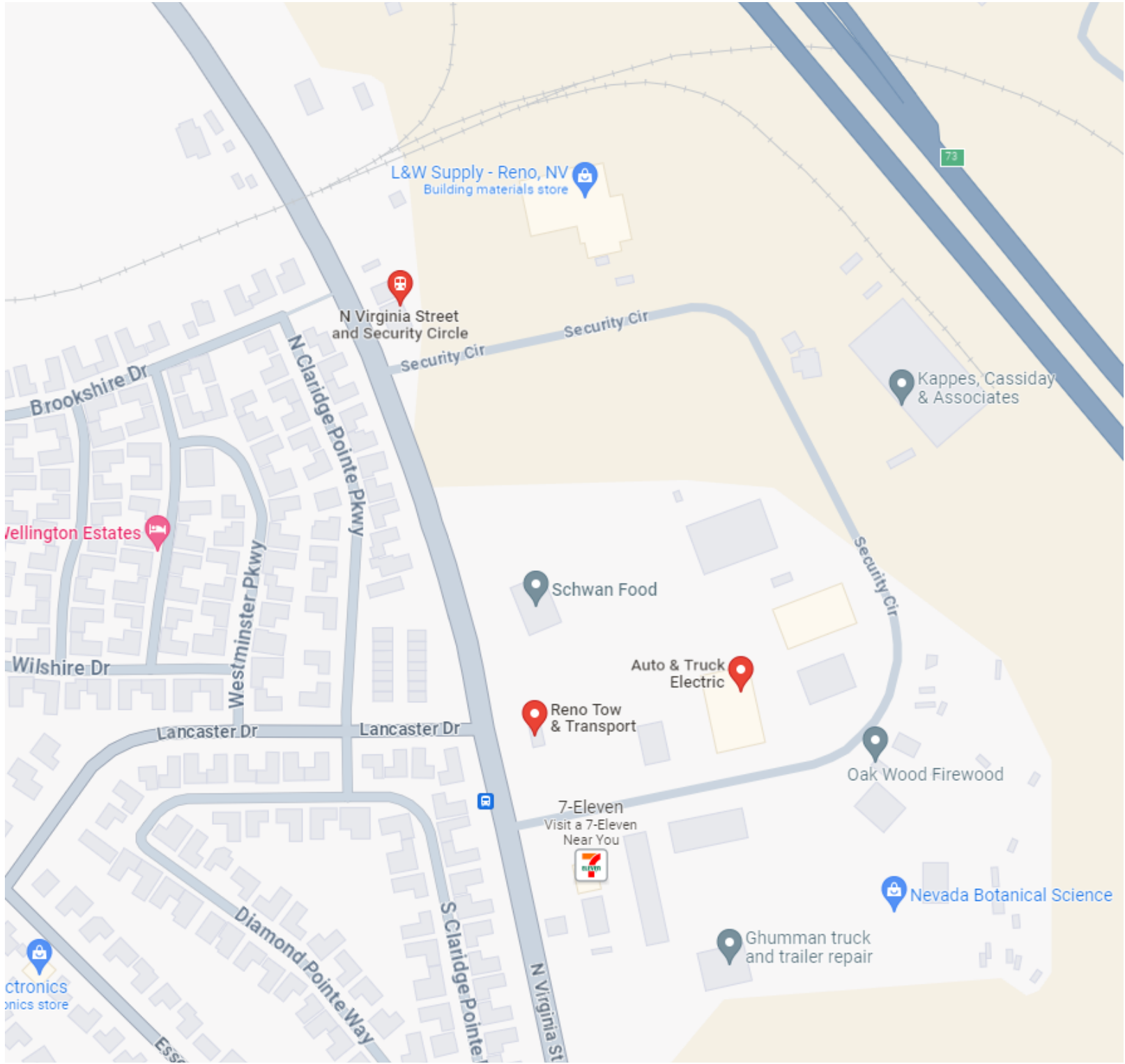
Building A	1500 -24000 SF	
Building B	1500 -18000 SF	Divisible
Building C	1500 -21000 SF	

Advantages of starting a business or relocating to this area include favorable tax climate and incentives, one to two-day distribution services to anywhere on the West Coast, competitive commercial utility rates, and renewable energy programs and abatements.





# Security Circle Industrial Park





# Listed by:



**Patty Steelman**

#BS.1001791

775-745-9892

MRSPSTEELMAN@YAHOO.COM



**SKY WEST**  
REAL ESTATE SERVICES, INC.

BS.0062387.CORP

PM.0165611.BKR