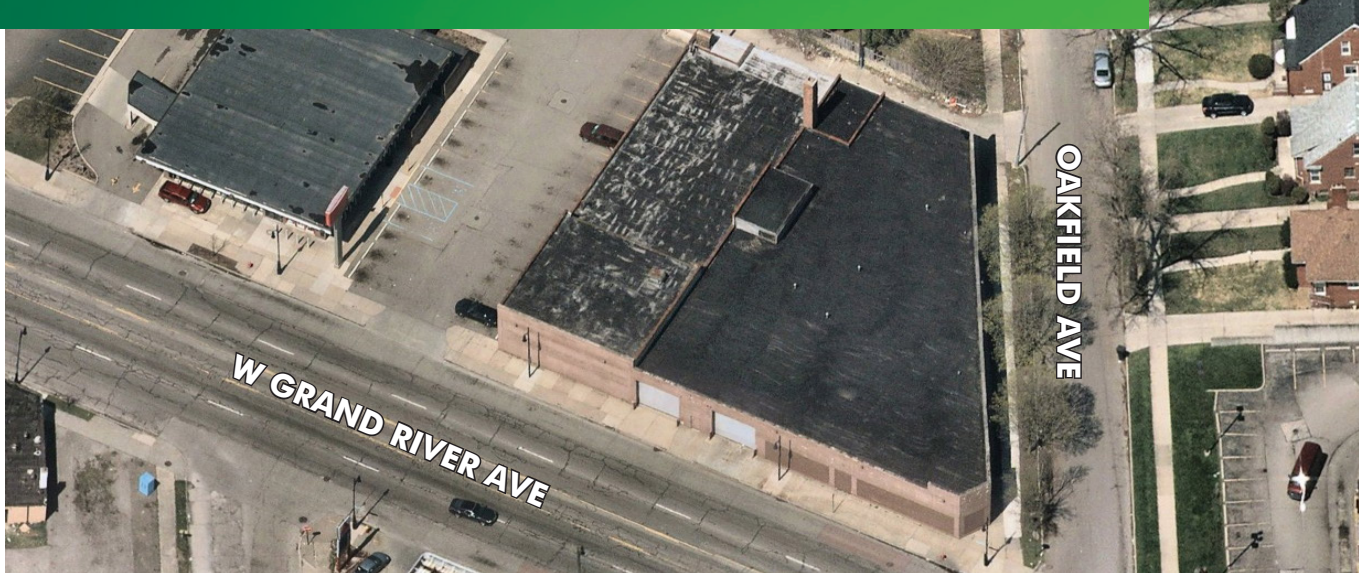


FOR SALE

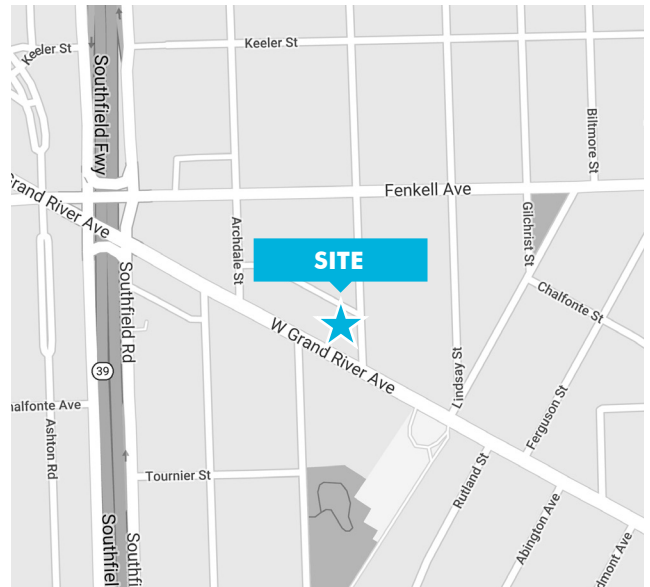
17500 GRAND RIVER AVE

DETROIT, MI



PROPERTY INFORMATION

- + Building Size: $\pm 21,344$ /limited office
- + Clear Height: 14'-16'
- + Two (2) Overhead Doors
- + Direct access to Southfield Freeway and minutes from I-96/M-10/I-696
- + Retail or Industrial Use Possibilities
- + Main Road Frontage



CONTACT US

PHILIP SPRAGUE

Senior Associate
+1 248 351 2032
philip.sprague@cbre.com

LAUREN SCARPACE

Senior Vice President
+1 248 351 2060
lauren.scarpace@cbre.com

www.cbre.us/detroit

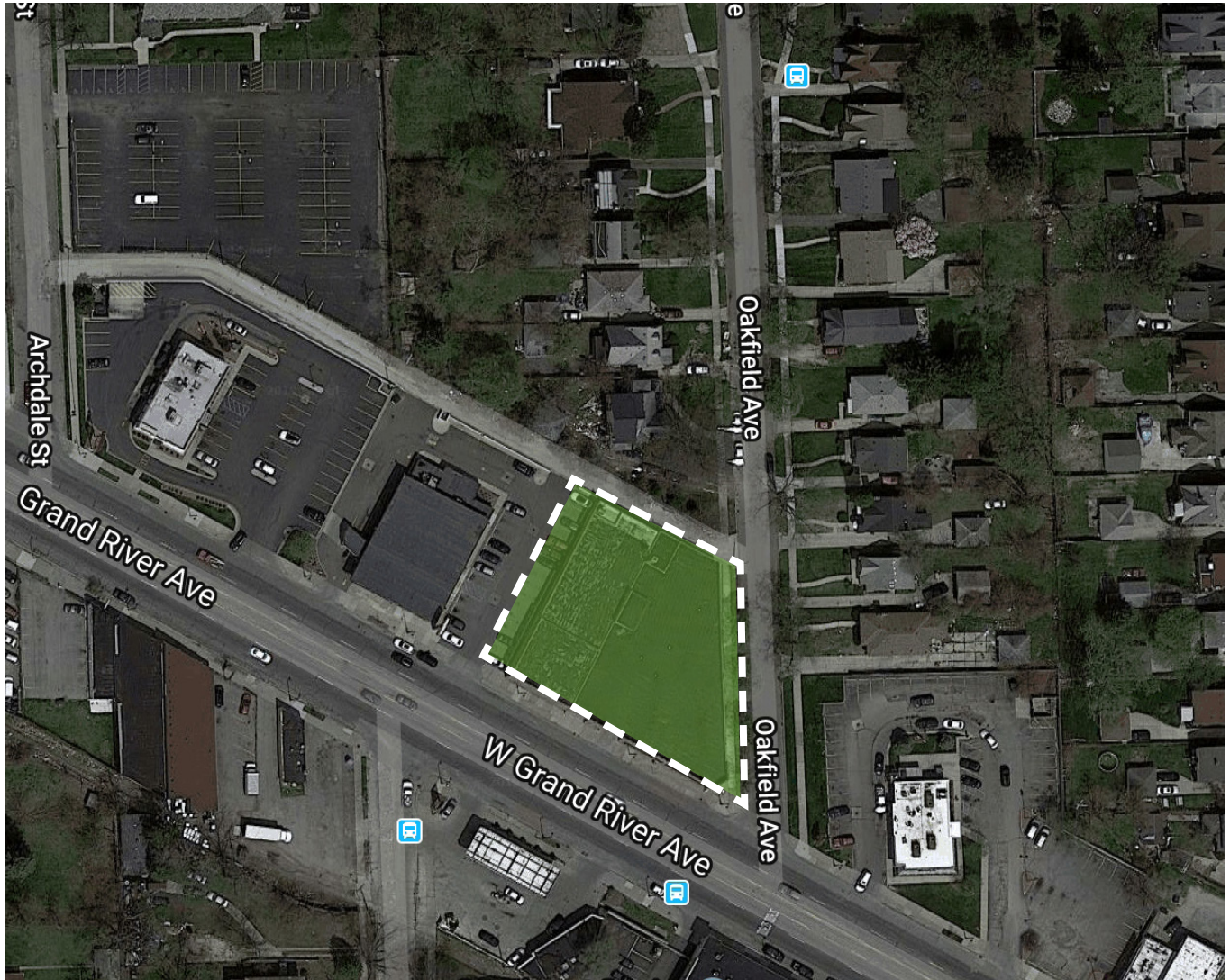
CBRE

FOR SALE
17500 GRAND RIVER AVE

**17500
GRAND RIVER AVE**
Detroit, MI



PROPERTY AERIAL



© 2020 CBRE, Inc. All rights reserved. This information has been obtained from sources believed reliable, but has not been verified for accuracy or completeness. You should conduct a careful, independent investigation of the property and verify all information. Any reliance on this information is solely at your own risk. CBRE and the CBRE logo are service marks of CBRE, Inc. All other marks displayed on this document are the property of their respective owners, and the use of such logos does not imply any affiliation with or endorsement of CBRE. Photos herein are the property of their respective owners. Use of these images without the express written consent of the owner is prohibited.

www.cbre.us/detroit

CBRE

FOR SALE 17500 GRAND RIVER AVE

17500
GRAND RIVER AVE
Detroit, MI



PROPERTY OVERVIEW

- + County: Wayne
- + Total Building Size: ±21,344 SF
- + Sale Price: \$530,000
- + Zoning: B4
- + Divisible (Min/Max): No
- + Taxes: \$7,686.02 (2018)



LAND & STRUCTURES

| | | | |
|-------------------|------------|----------------------|----------------------|
| Year Built: | 1949 | Parking: | 0.70/1,000 SF |
| Total Available: | ±21,344 SF | HVAC: | GFA |
| Available Office: | ±1,500 | Power: | To be field verified |
| Available Shop: | ±19,844 | Security System: | Yes |
| Divisible: | No | Lighting: | Florescent |
| Acreage: | 0.49 | Overhead Doors: | Two (2) |
| Construction: | Masonry | Truck wells / Docks: | No |
| Stories: | 1 | Cranes: | No |
| Ceiling Height: | 14'-16' | Sprinklers: | No |



COMMENTS

- + Many Uses Including Industrial & Retail
- + Direct Access to Southfield Freeway
- + Main Road Frontage



CONTACT US

PHILIP SPRAGUE

Senior Associate
+1 248 351 2032
philip.sprague@cbre.com

LAUREN SCARPACE

Senior Vice President
+1 248 351 2060
lauren.scarpace@cbre.com

© 2020 CBRE, Inc. All rights reserved. This information has been obtained from sources believed reliable, but has not been verified for accuracy or completeness. You should conduct a careful, independent investigation of the property and verify all information. Any reliance on this information is solely at your own risk. CBRE and the CBRE logo are service marks of CBRE, Inc. All other marks displayed on this document are the property of their respective owners, and the use of such logos does not imply any affiliation with or endorsement of CBRE. Photos herein are the property of their respective owners. Use of these images without the express written consent of the owner is prohibited.