



FOR LEASE

201 NE 4th St

PROPERTY DESCRIPTION

This industrial property offers a well-equipped space ideal for a variety of industrial and commercial uses. The property includes a brick office building, a large enclosed metal warehouse with two drive-in bays, and a spacious open metal warehouse. Additional features include a covered parking area, ample lot space for semi-sized vehicles, and a secure chain-link fence surrounding the property.

PROPERTY OVERVIEW

- 4,122 SF enclosed warehouse with two large drive-in bays
- 1,004 SF brick office building
- 404 SF open metal warehouse
- Secure chain-link fenced lot
- Ample parking for semi-sized vehicles
- \$3,000/month + NNN fees

OFFERING SUMMARY

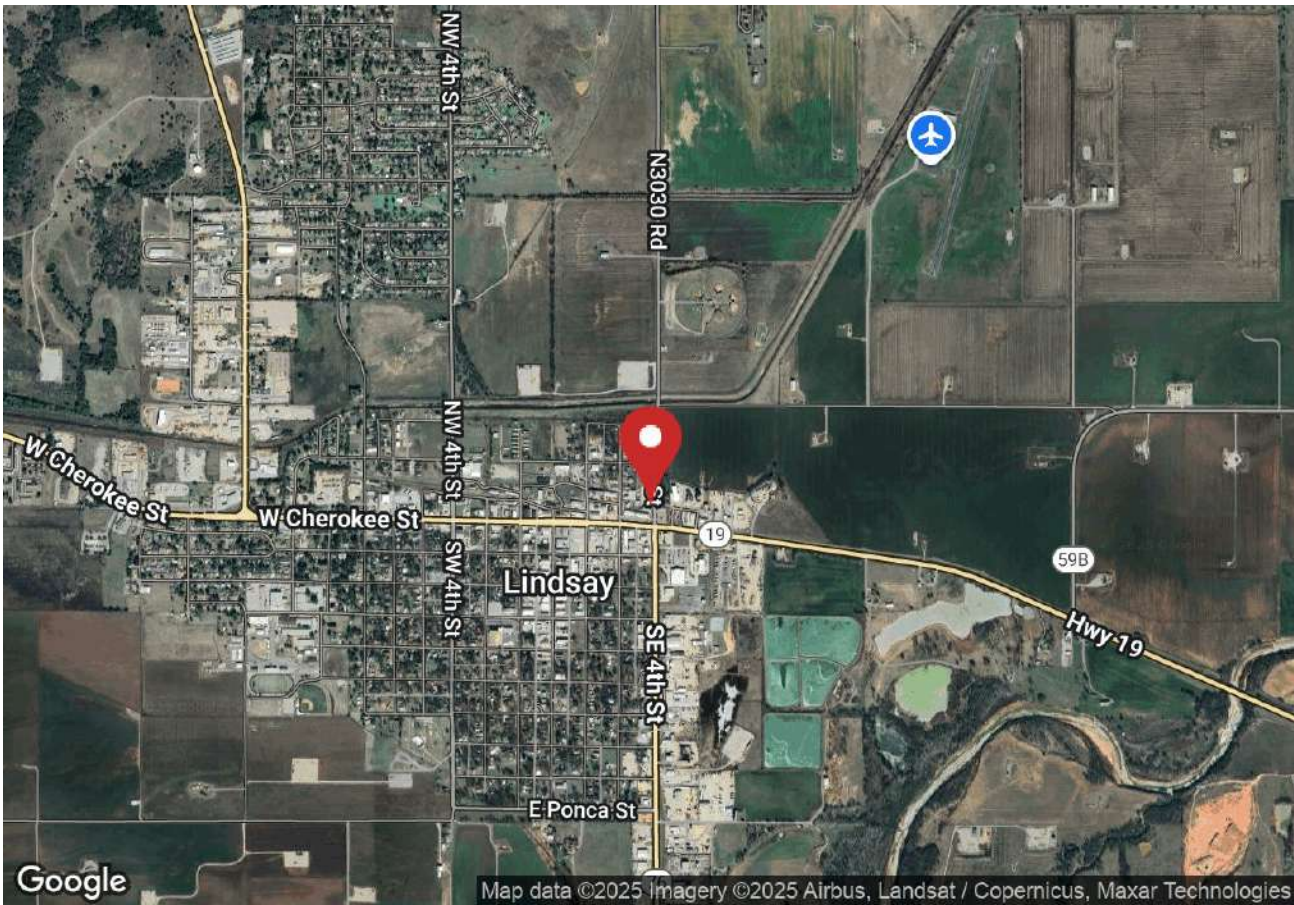
Lease Rate:	\$3,000.00 per month + NNN
Available SF:	5,530 SF
Lot Size:	1.19 Acres
Building 1:	4,122 SF
Building 2:	1,004 SF
Building 3:	404 SF

DEMOGRAPHICS	1 MILE	5 MILES	10 MILES
Total Households	659	1,701	2,901
Total Population	1,661	4,395	7,491
Average HH Income	\$73,045	\$78,901	\$84,518

Kendra Streeter
405.590.7202 kendra@fleskeholding.com

Josh White
405.417.6761 josh@fleskeholding.com

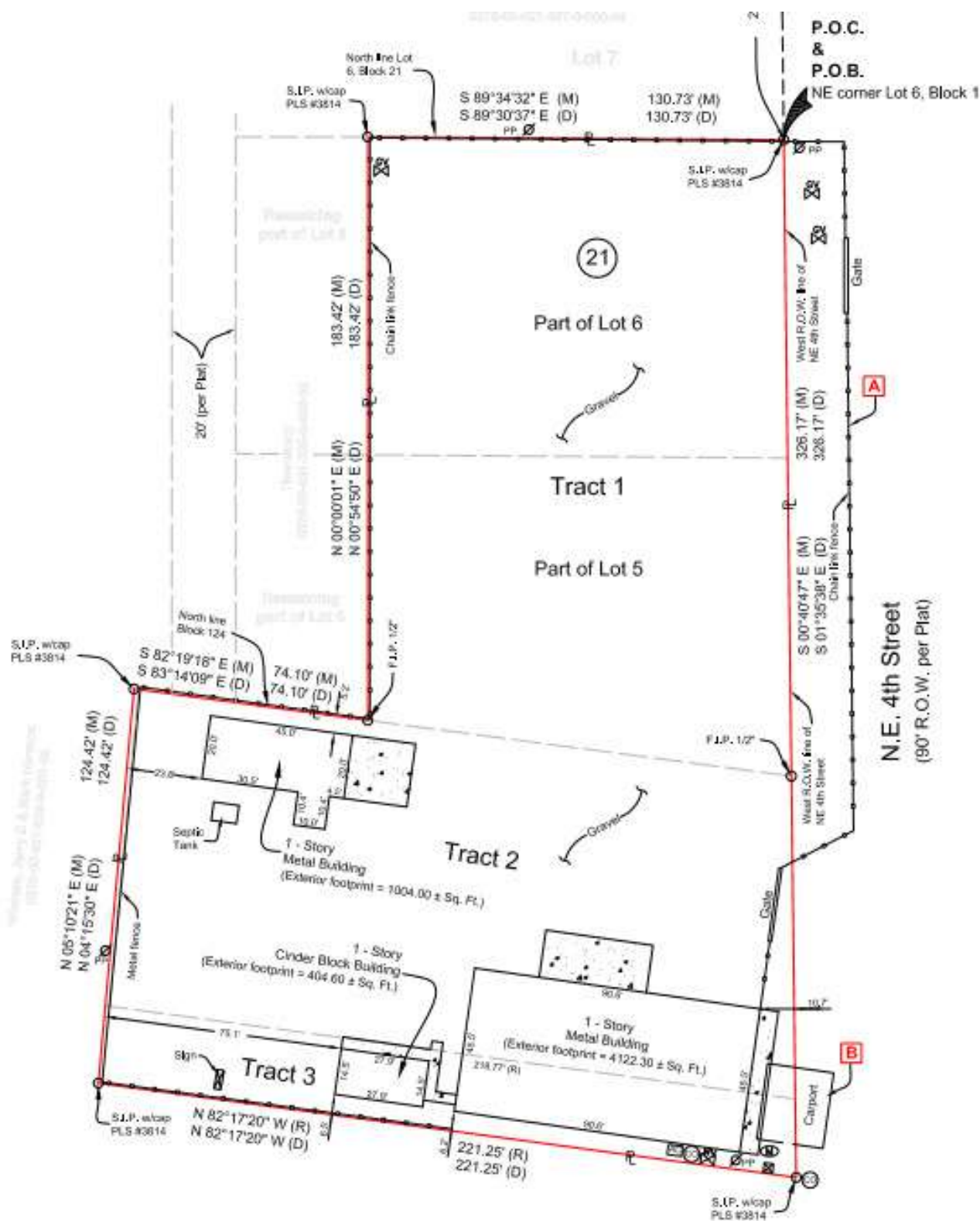




Kendra Streeter
405.590.7202 kendra@fleskeholding.com

Josh White
405.417.6761 josh@fleskeholding.com

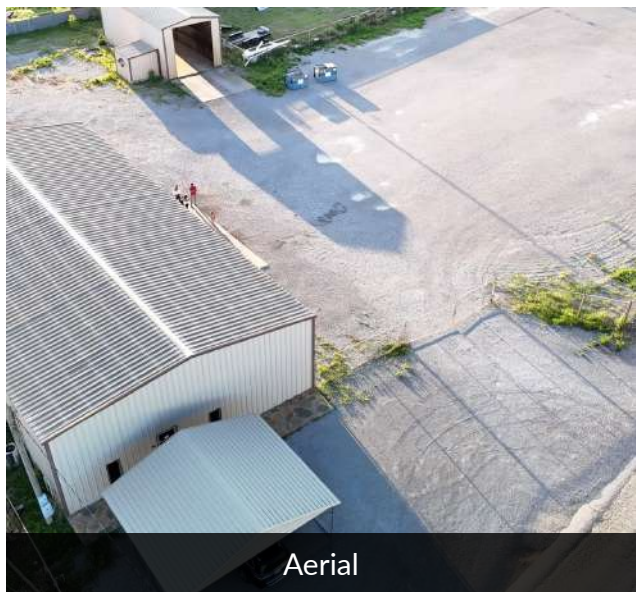




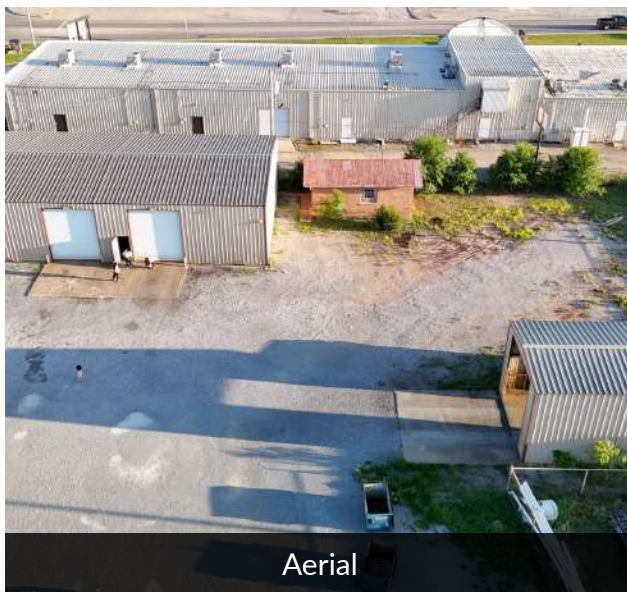
Kendra Streeter
405.590.7202 kendra@fleskeholding.com

Josh White
405.417.6761 josh@fleskeholding.com





Aerial



Aerial



Aerial



Exterior Warehouse



Gravel Yard

Kendra Streeter
405.590.7202 kendra@fleskeholding.com

Josh White
405.417.6761 josh@fleskeholding.com





Kitchenette



Office Interior



Office Interior



Small Building - Storage



Warehouse Interior



Warehouse Interior



Washbay Interior



Washbay Exterior

Kendra Streeter
405.590.7202 kendra@fleskeholding.com

Josh White
405.417.6761 josh@fleskeholding.com

