



DESCRIPTION

Westlake Plaza is a neighborhood retail center in Davis anchored by Westlake Market - an IGA Supermarket, and Family Dollar. The center boasts close proximity to UC Davis student housing, recently upgraded common areas, and one of the lowest lease rates in all of Davis.

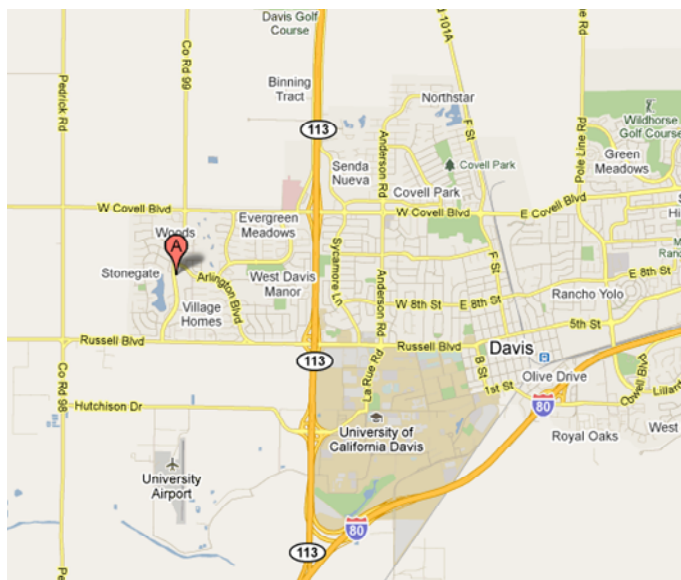
Suite	Size (SF)	Lease Rate PSF
266	1,216	\$1.25, NNN
268	1,051	\$1.25, NNN

**All second floor retail spaces with elevator service.*

NNN EXPENSES Currently \$.39 PSF/MO

DEMOGRAPHICS

DISTANCE	POPULATION	AVG HOUSEHOLD INCOME
1 MI	12,164	\$85,553
3 MI	46,171	\$69,369
5 MI	76,065	\$75,807



The information contained herein has either been given to us by the owner of the property or obtained from sources that we deem reliable. We have no reason to doubt its accuracy, but we do not guarantee it. The prospective buyer should carefully verify the information contained herein.



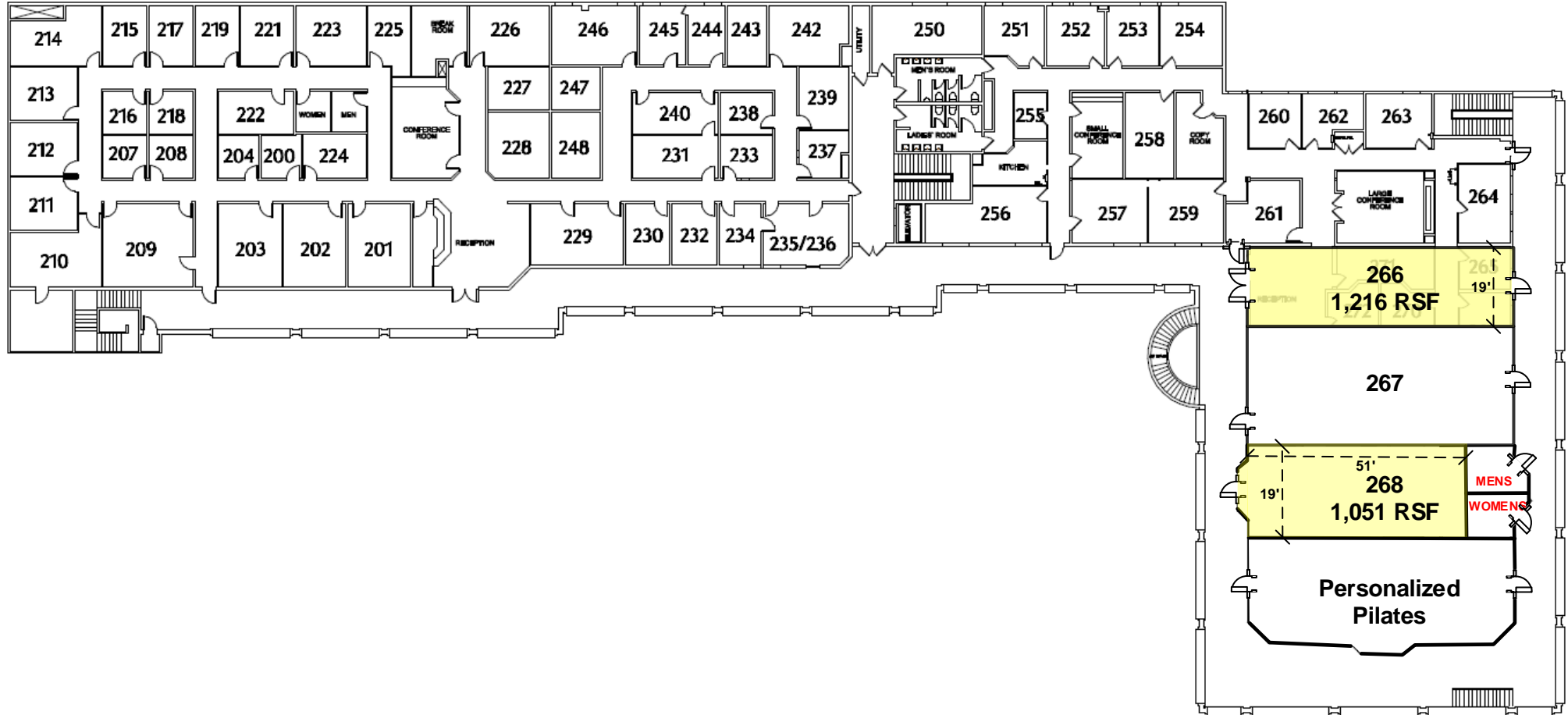
Justin Dobrinski
ADOBI VENTURES

Office: (916) 504-4904
Mobile: (916) 601-4027
Fax: (916) 441-0280
Email: justin@adobiventures.com
DRE: 01414151

Westlake Plaza - Davis, CA

Second Floor Retail Plan

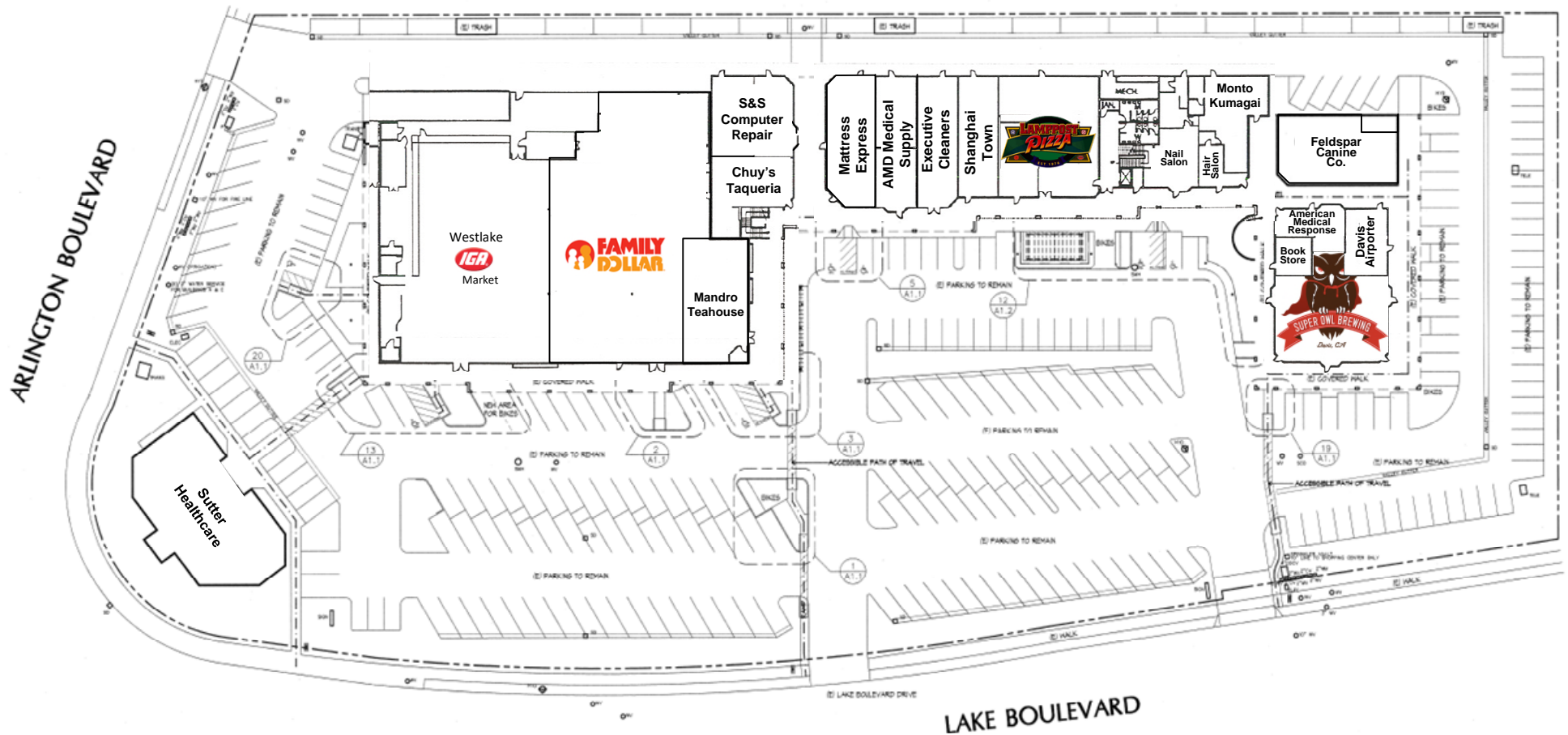
Vacant in Yellow



Westlake Plaza

Davis, CA

Site Plan





Justin Dobrinski

ADOBI VENTURES

Office: (916) 504-4904

Mobile: (916) 601-4027

Email: justin@adobiventures.com

Westlake Plaza

Aerial

