



South Park Parcel A Buildings 5 and 10

6001 POWER INN ROAD, SACRAMENTO, CA

FOR LEASE



Divisible - All or Part Buildings and Paved Yard

- PARCEL A** ±2.51 acres paved and secured
- BUILDING 5** ±25,600 Square feet
- BUILDING 10** ±6,500 Square feet
- CLEAR** height: 22'-26'
- 400** Amp, 120/208v 3-phase service possible
- 2 SPOT** truck well
- OVERSIZED** grade level door access
- FULLY** sprinklered
- RAIL** service to building
- BUILDING** upgrades to include new doors and exterior repair

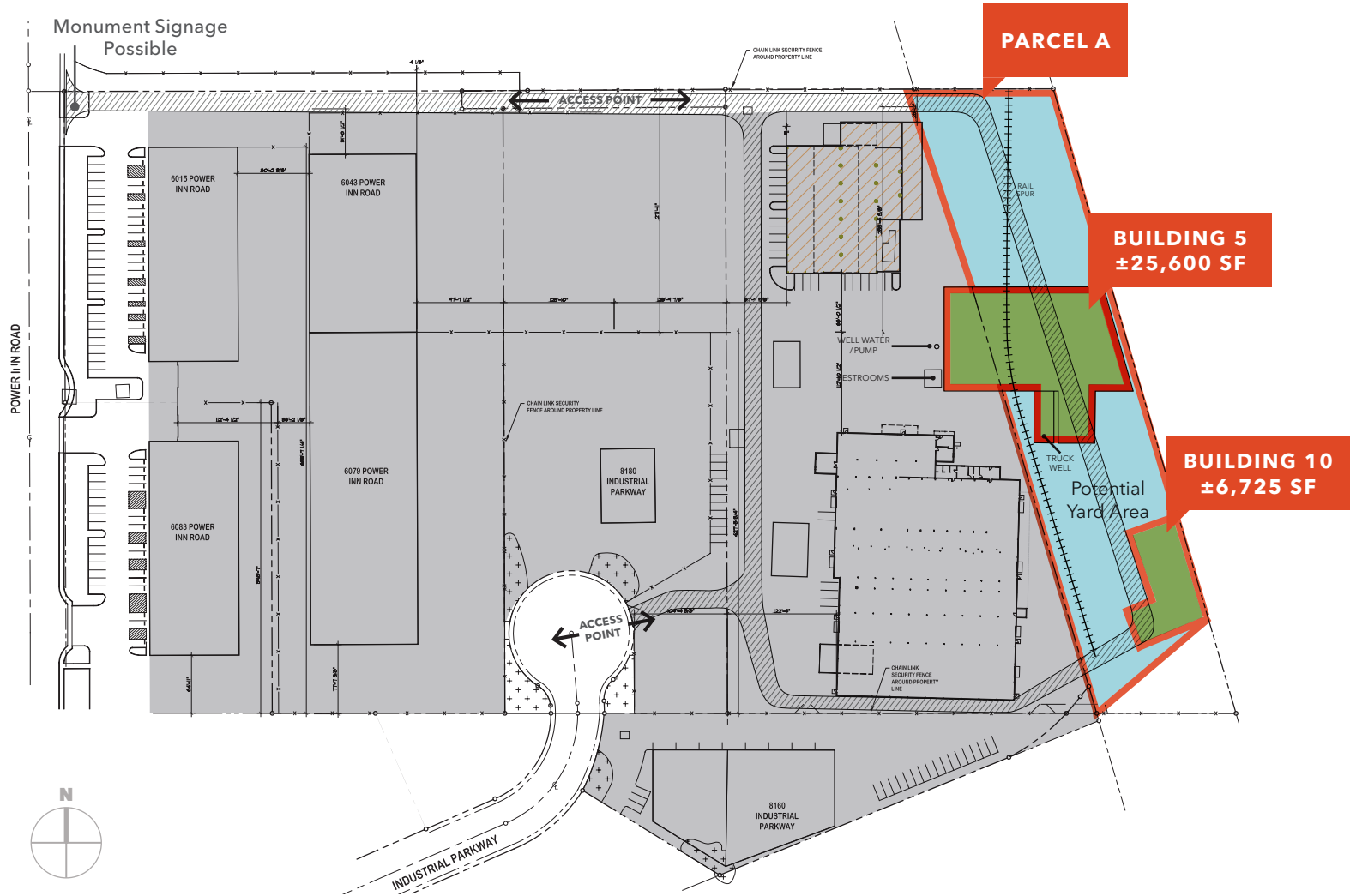
BILL NIETHAMMER
916.751.3639
bill.niethammer@kidder.com
LIC N° 0925770

FOR LEASE

South Park Parcel A, Buildings 5 and 10

6001 POWER INN ROAD, SACRAMENTO, CA

Site Plan



KIDDER.COM

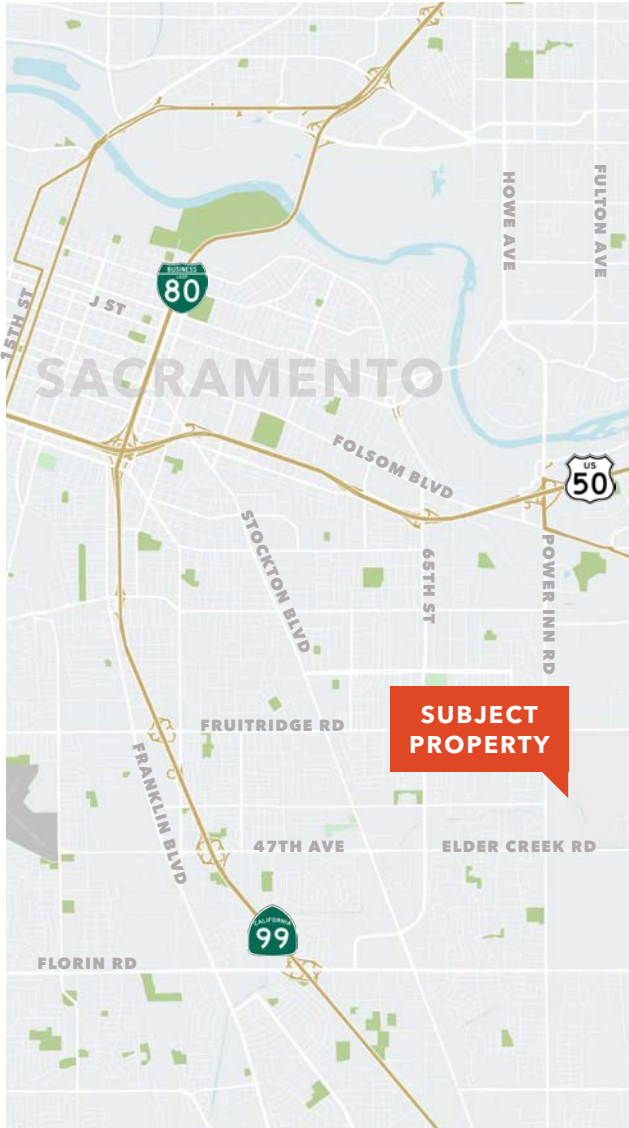
This information supplied herein is from sources we deem reliable. It is provided without any representation, warranty, or guarantee, expressed or implied as to its accuracy. Prospective Buyer or Tenant should conduct an independent investigation and verification of all matters deemed to be material, including, but not limited to, statements of income and expenses. Consult your attorney, accountant, or other professional advisor.

km Kidder Mathews

FOR LEASE

South Park Parcel A, Buildings 5 and 10

6001 POWER INN ROAD, SACRAMENTO, CA



KIDDER.COM

This information supplied herein is from sources we deem reliable. It is provided without any representation, warranty, or guarantee, expressed or implied as to its accuracy. Prospective Buyer or Tenant should conduct an independent investigation and verification of all matters deemed to be material, including, but not limited to, statements of income and expenses. Consult your attorney, accountant, or other professional advisor.

km Kidder Mathews