

FOR LEASE

7,000± SF SPACE AVAILABLE
4946 Delmar Blvd. | St. Louis, MO 63108



PROPERTY HIGHLIGHTS

- 7,000± SF Available
- Most heavily trafficked intersection in the city
- Walking distance to Central West End restaurants and entertainment
- New ALDI, White Castle, and Family Dollar across from lease site
- New Whole Foods anchoring newly constructed residential towers within one mile south
- 625 Lofts @ Euclid newly renovated mixed-use residential building one block east
- Forest Park 1/2 mile south
- Approved new Delmar streetscape plan coming soon
- Access to multiple parking spaces

LEASE RATE: \$15.50 PSF NNN



CONTACT US:

Michael Roberts Jr., Esq.

Vice President

Mobile: 314-363-6873

mroberts@gundakercommercial.com



GUNDAKER
COMMERCIAL GROUP

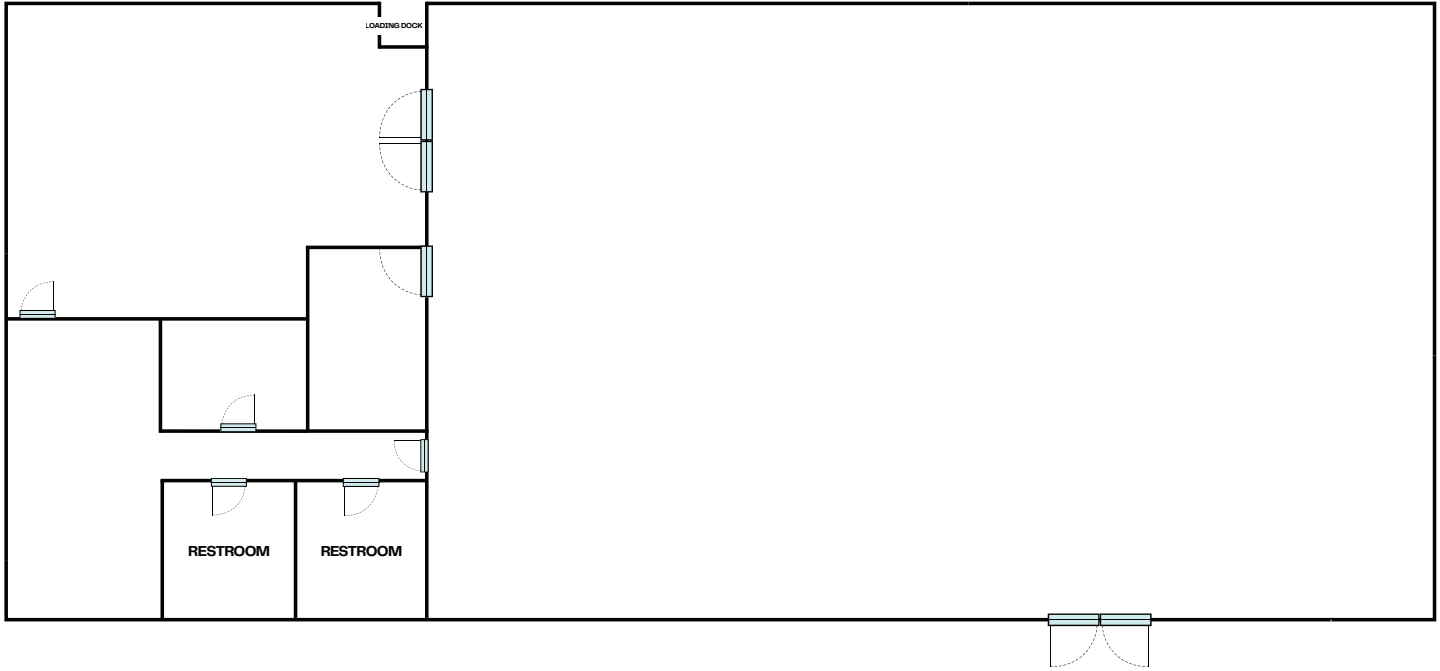
55 Westport Plaza Drive, Ste. 200

St. Louis, MO 63146

M: 636-728-5100 | F: 636-728-5140

gundakercommercial.com [in](#) [@](#) [f](#)

AERIAL AND FLOOR PLAN



CONTACT US:

Michael Roberts Jr., Esq.

Vice President

Mobile: 314-363-6873

mroberts@gundakercommercial.com



GUNDAKER
COMMERCIAL GROUP

55 Westport Plaza Drive, Ste. 200

St. Louis, MO 63146

M: 636-728-5100 | F: 636-728-5140

gundakercommercial.com [in](#) [@](#) [f](#)