

821 FOLSOM STREET, #102

SAN FRANCISCO, CA

FOR LEASE

COMMERCIAL CONDOMINIUM



PLEASE CONTACT:

MARK GEDYMIN
415-343-7289
MARK@BEACON-CRE.COM
LIC #: 01397159



OPPORTUNITY OVERVIEW

PROPERTY PROFILE

ADDRESS	821 Folsom Street #102, San Francisco, CA 94107
PREMISES	+/- 3,228 RSF (available May 1, 2026)
FLOOR	Ground Floor
YEAR BUILT	2004
PARKING	3 garaged, \$350 per car per month
ZONING	MUR (Mixed-Use, Residential)
SUBMARKET	Yerba Buena, SOMA
Asking: \$36.00 PER RSF YEAR, IG	

The premises features:

- Two large bullpens
- 1 board room, 1 small conference room, 1 mothers room/small meeting room
- High, exposed concrete ceilings (approximately x')
- Open kitchenette
- Two (2) in-suite restrooms
- Video link [here](#)

The building features:

- Onsite parking garage & access to shared courtyard
- Proximity to BART, freeways, Muni's Yerba Buena streetcar station, & Caltrain

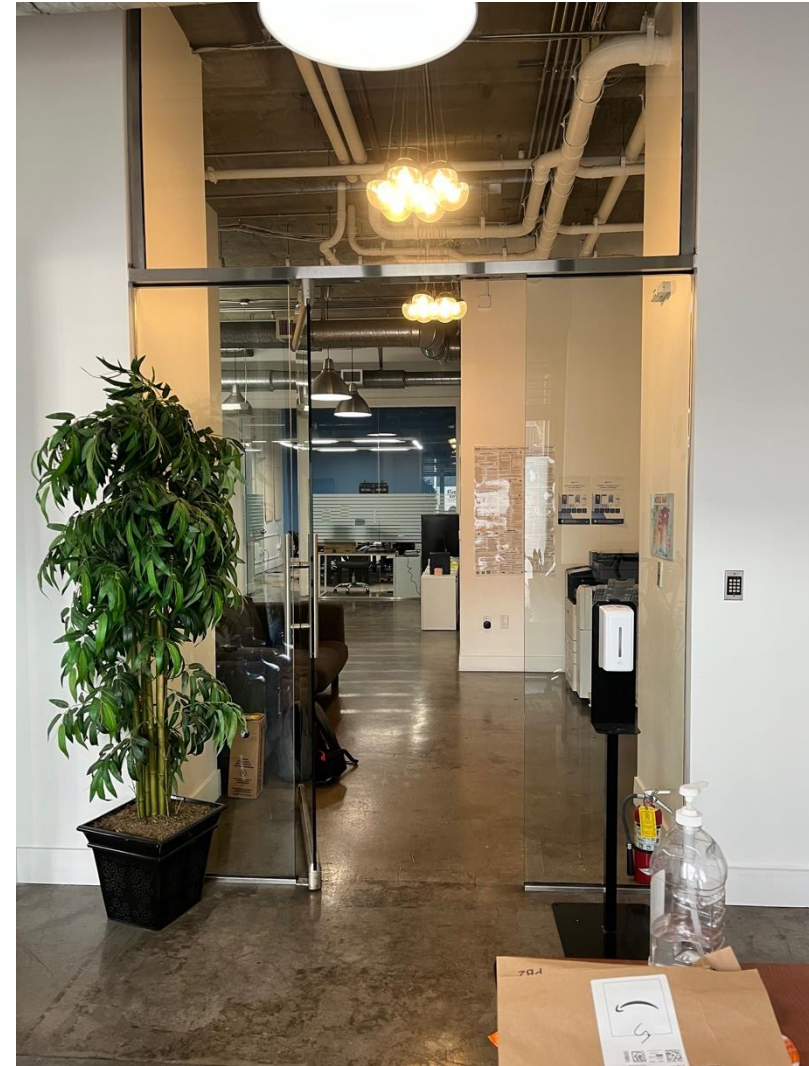


PHOTO GALLERY

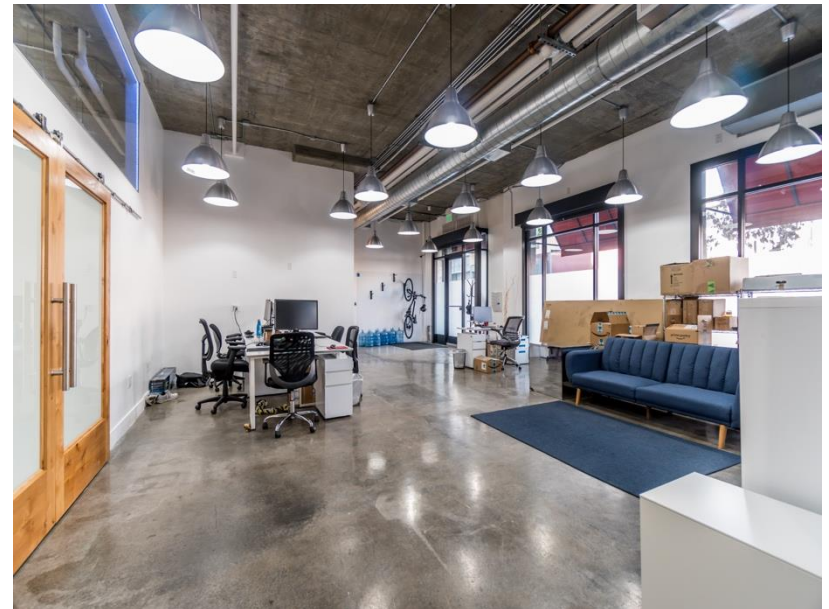
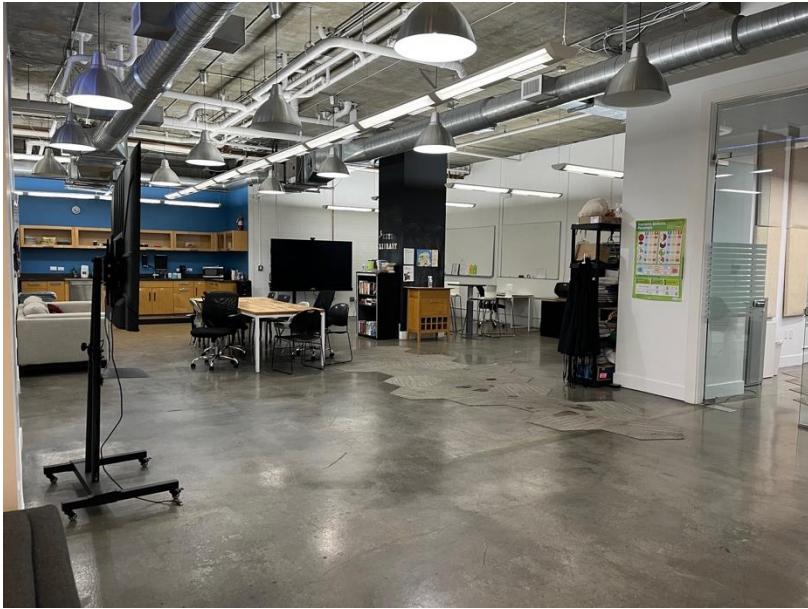
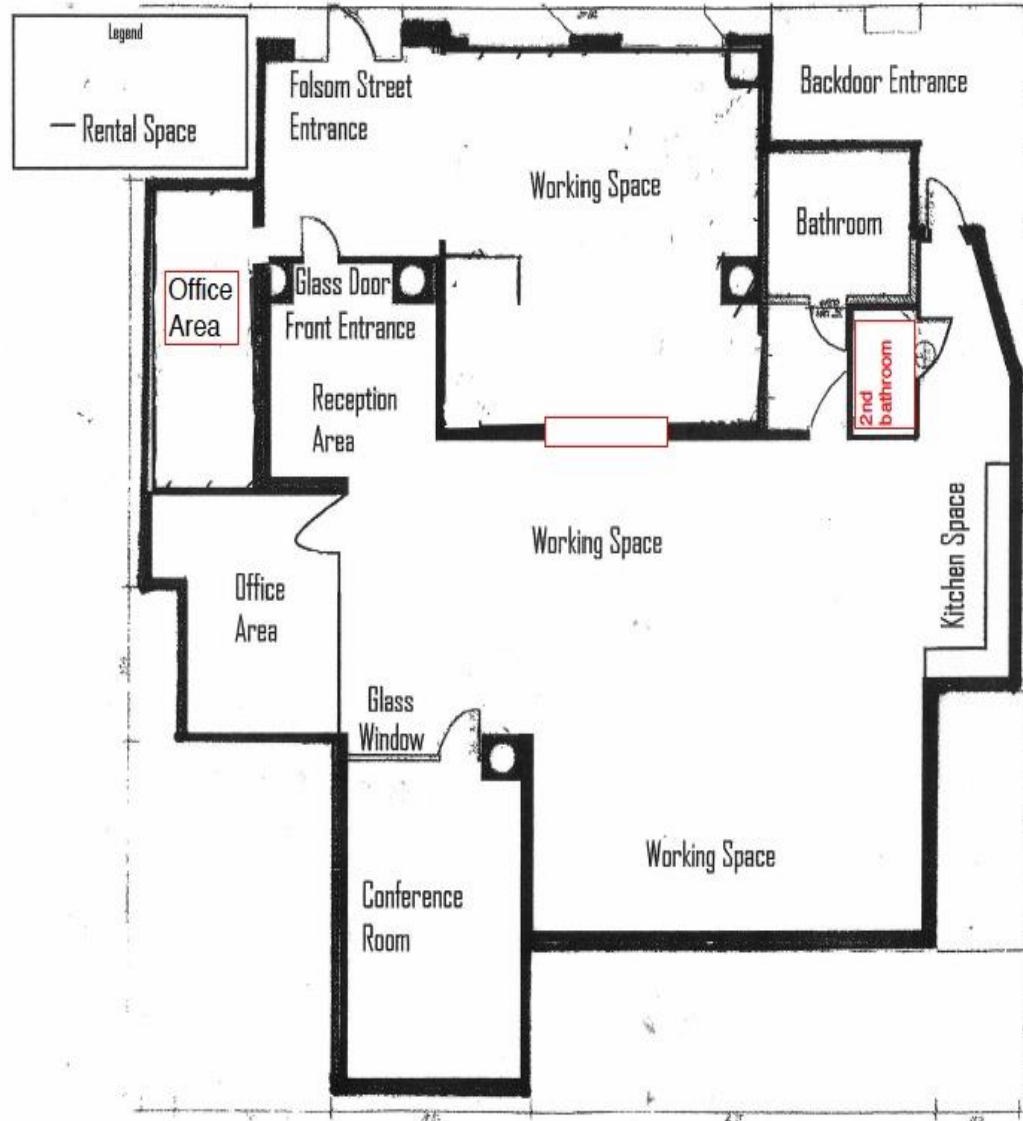


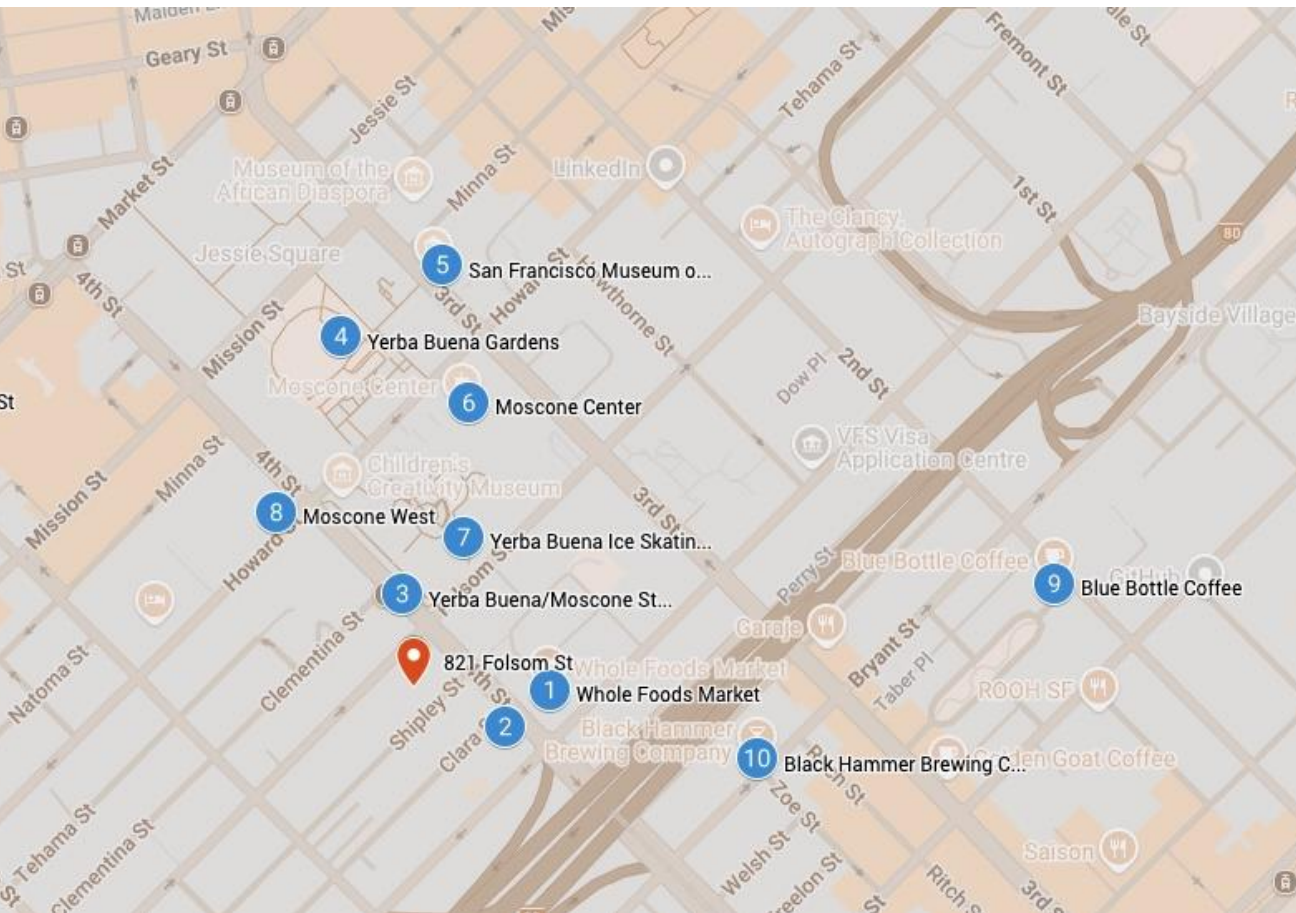
PHOTO GALLERY



Florplan (not to scale)



LOCATION OVERVIEW



- 1 Whole Foods Market
- 2 Delah Coffee
- 3 Yerba Buena/Moscone Stati...
- 4 Yerba Buena Gardens
- 5 San Francisco Museum of M...
- 6 Moscone Center
- 7 Yerba Buena Ice Skating & B...
- 8 Moscone West
- 9 Blue Bottle Coffee
- 10 Black Hammer Brewing Com...
- 11 Powell St



MARK GEDYMIN
415-343-7289
MARK@BEACON-CRE.COM
LIC #: 01397159

821 FOLSOM STREET, #102
SAN FRANCISCO, CA

The information contained in this document has been obtained from sources deemed reliable; however, no warranty or representation, expressed or implied, is made as to the accuracy of the information. Any projections, opinions, assumptions, or estimates used are for example only and do not represent the current or future performance of the property. The BEACON Commercial Advisors logo is property of BEACON Commercial Advisors. All other marks or logos displayed within this document are the property of their respective owners, and the use of such marks or logos does not imply any affiliation with or endorsement of BEACON Commercial Advisors.