

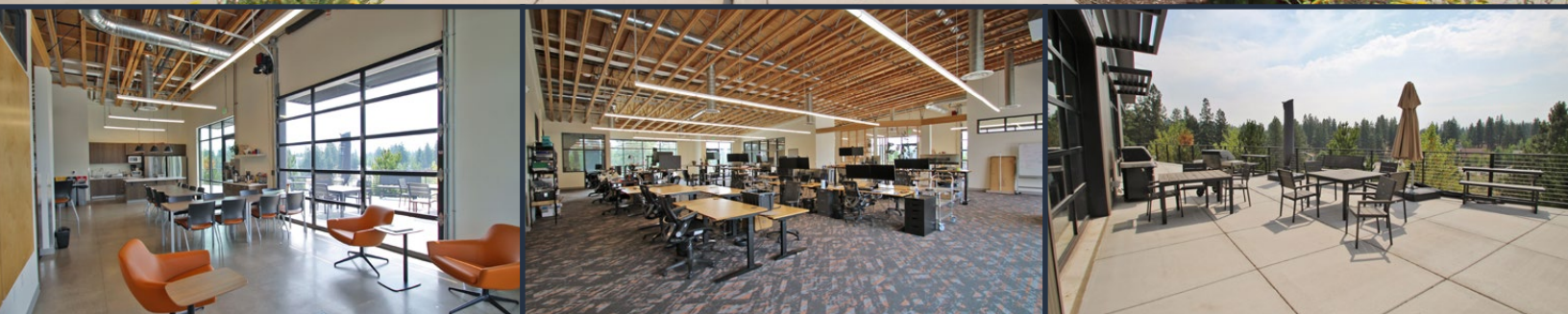
FOR SUBLEASE

10,853 SF | \$1.80/SF/MO. NNN

DISTRICT 2 EAST Freestanding Class A Office/Flex Building

2723 NW Potts Court, Bend, OR 97703

RATE REDUCED TO
\$1.80/SF/MO.



PROPERTY DETAILS

Avail. Space:	10,853 SF
Lease Rate:	\$2.60/SF/Mo. NNN \$1.80/SF/Mo. NNN
CAMs:	Est. at \$0.65/SF/Mo.
Zoning:	Mixed Employment (ME)
Power:	800 Amp 3-phase
Parking:	Abundant onsite spaces
Sublease Exp.:	April 30, 2029

HIGHLIGHTS

- Outstanding building signage at NW Washington Drive and NW Lolo Drive in NorthWest Crossing
- Modern industrial look with open ductwork
- Abundant natural light
- Close to NorthWest Crossing restaurants, shops, schools and other businesses
- Close to Phil's Trail Complex and Shevlin Park
- Bend Enterprise Zone incentives are available

Kristie Schmitt, CCIM | Graham Dent, SIOR

600 SW Columbia St., Ste. 6100 | Bend, OR 97702

541.383.2444 | www.CompassCommercial.com

COMPASS
COMMERCIAL

**REAL
ESTATE
SERVICES**

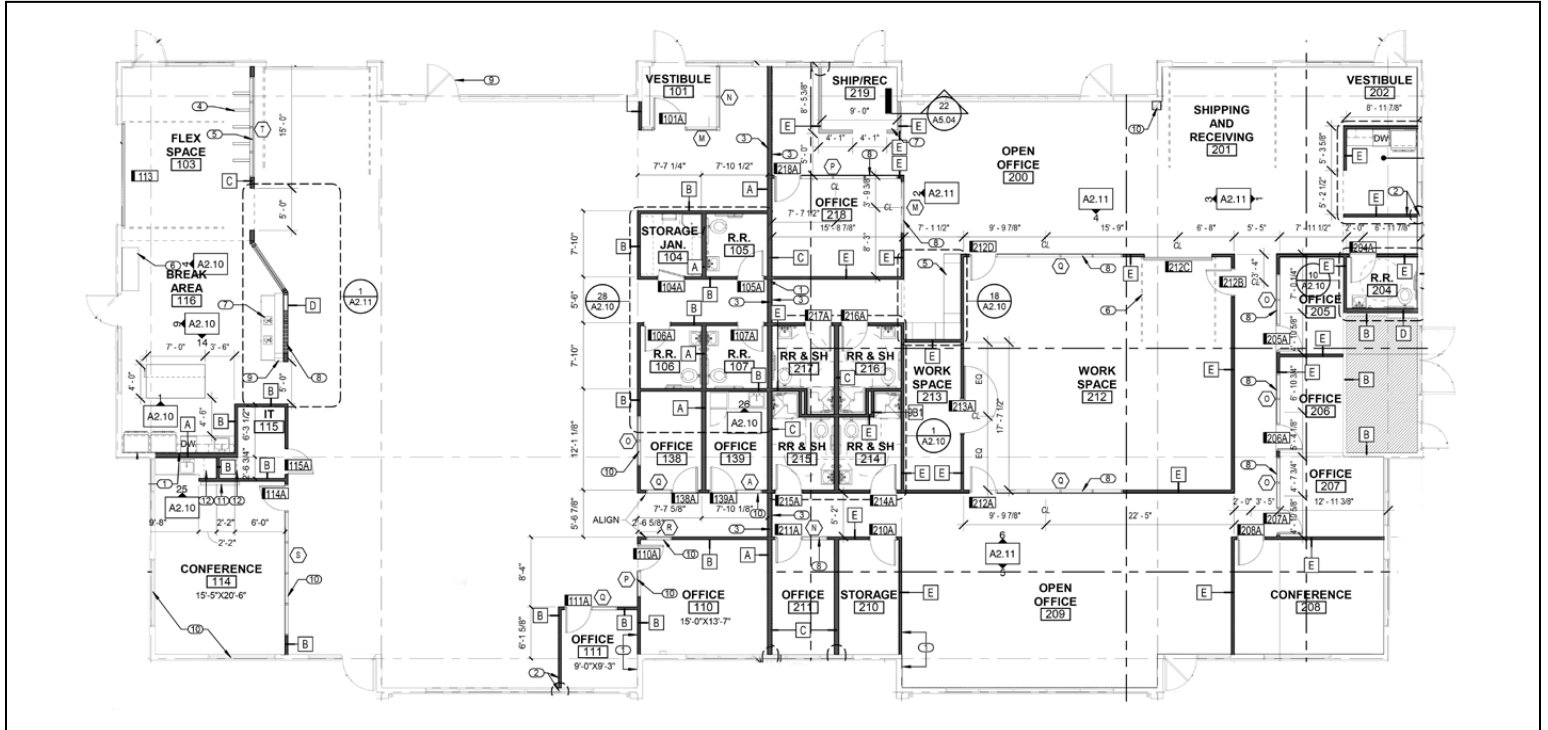
10,853 SF | \$1.80/SF/MO. NNN

DISTRICT 2 EAST

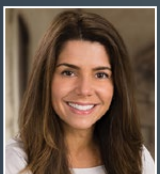
Freestanding Class A Office/Flex Building

2723 NW Potts Court, Bend, OR 97703

FLOOR PLAN



Brokers are licensed in the state of Oregon. This information has been furnished from sources we deem reliable, but for which we assume no liability. This is an exclusive listing. The information contained herein is given in confidence with the understanding that all negotiations pertaining to this property be handled through Compass Commercial Real Estate Services. All measurements are approximate.



Kristie Schmitt, CCIM
Broker
Cell 541.527.5515
kschmitt@compasscommercial.com



Graham Dent, SIOR
Partner, Broker
Cell 541.639.6515
gdent@compasscommercial.com

COMPASS
COMMERCIAL

**REAL
ESTATE
SERVICES**