

Property For Lease

22 Park Place

22 Park Place Great Neck Plaza, NY 11021



For More Information:

Rozita Soomekh- Results Powered by Rozita

Licensed Associate Real Estate Broker
Douglas Elliman Commercial - Long Island
516.498.2152
rozita.soomekh@elliman.com

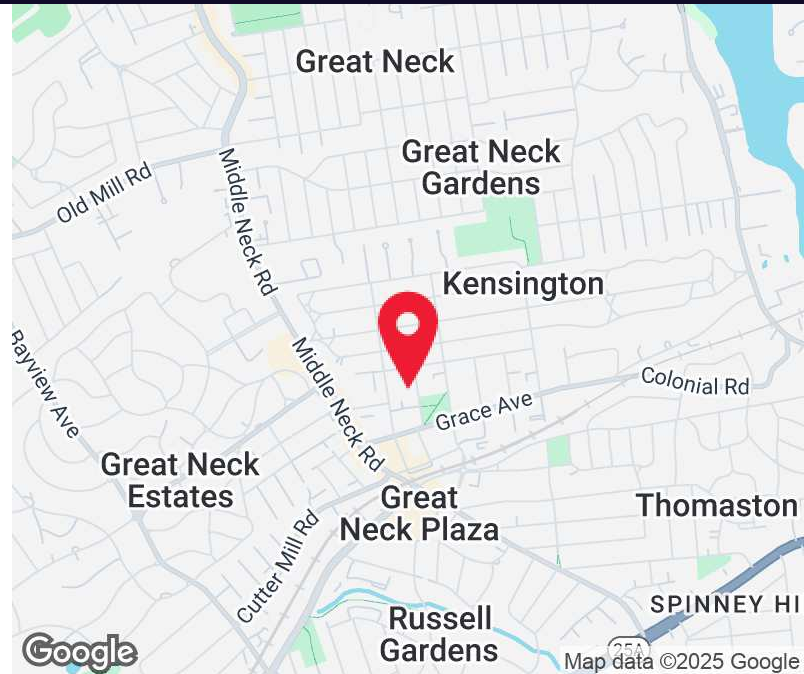
WWW.ELLIMANCOMMERCIAL.COM

THE PROPERTY CONTAINED WITHIN THIS DOCUMENT IS BEING EXCLUSIVELY REPRESENTED BY DOUGLAS ELLIMAN REAL ESTATE COMMERCIAL DIVISION, 650 SMITHTOWN BYPASS STE. 117 SMITHTOWN, NY 11787 631 858-2405 © 2023 DOUGLAS ELLIMAN COMMERCIAL OF LI, LLC. ALL MATERIAL PRESENTED HEREIN IS INTENDED FOR INFORMATION PURPOSES ONLY. WHILE THIS INFORMATION IS BELIEVED TO BE CORRECT, IT IS REPRESENTED SUBJECT TO ERRORS, OMISSIONS, CHANGES OR WITHDRAWAL WITHOUT NOTICE. ALL PROPERTY INFORMATION, INCLUDING, BUT NOT LIMITED TO SQUARE FOOTAGE, ROOM COUNT, ZONING IN THE LISTING SHOULD BE VERIFIED BY YOUR OWN ATTORNEY, ARCHITECT OR ZONING EXPERT. IF YOUR PROPERTY IS CURRENTLY LISTED WITH ANOTHER REAL ESTATE BROKER, PLEASE DISREGARD THIS OFFER. IT IS NOT OUR INTENTION TO SOLICIT THE OFFERINGS OF OTHER REAL ESTATE BROKERS. WE COOPERATE WITH THEM FULLY. EQUAL HOUSING OPPORTUNITY.



Office Property For Lease

22 Park Place Great Neck Plaza, NY 11021



Offering Summary

Lease Rate:	\$750.00 per month (MG)
Suite A	\$750/Month 100 SF

Property Overview

Experience modern elegance and versatility at this sophisticated property in Great Neck Plaza, NY, located in a residential apartment building. With customizable floor plans and premium amenities, the property offers two office spaces that can be combined. The building is located near a Long Island Rail Road station and the transit bus. Embrace the opportunity to showcase your brand in a prestigious location while enjoying the convenience of nearby dining, shopping, and public transportation options. Elevate your business presence at this exceptional property in the heart of Great Neck Plaza.

Property Highlights

For More Information:

Rozita Soomekh- Results Powered by Rozita

Licensed Associate Real Estate Broker
Douglas Elliman Commercial - Long Island
516.498.2152
rozita.soomekh@elliman.com

 **Douglas Elliman**
Commercial

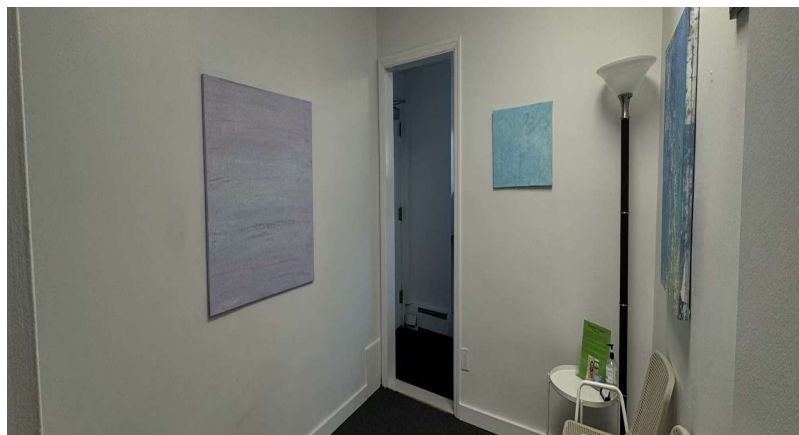
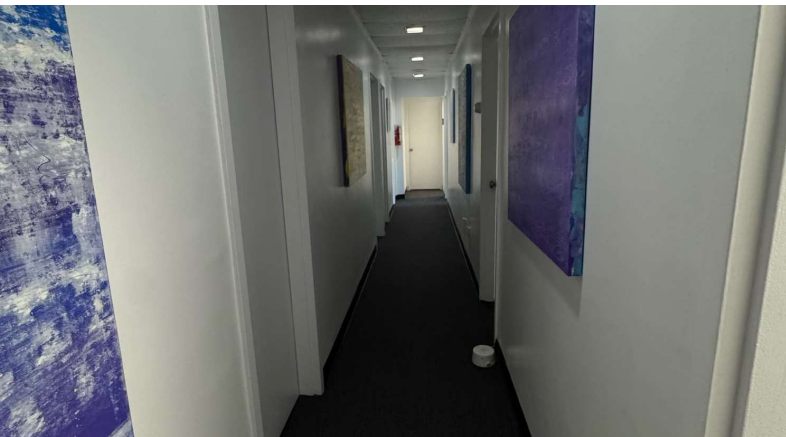
WWW.ELLIMANCOMMERCIAL.COM

THE PROPERTY CONTAINED WITHIN THIS DOCUMENT IS BEING EXCLUSIVELY REPRESENTED BY DOUGLAS ELLIMAN REAL ESTATE COMMERCIAL DIVISION, 550 SMITHTOWN BYPASS STE. 117 SMITHTOWN, NY 11787 631.858.2405 © 2023 DOUGLAS ELLIMAN COMMERCIAL OF LI, LLC. ALL MATERIAL PRESENTED HEREIN IS INTENDED FOR INFORMATION PURPOSES ONLY. WHILE THIS INFORMATION IS BELIEVED TO BE CORRECT, IT IS REPRESENTED SUBJECT TO ERRORS, OMISSIONS, CHANGES OR WITHDRAWAL WITHOUT NOTICE. ALL PROPERTY INFORMATION, INCLUDING, BUT NOT LIMITED TO SQUARE FOOTAGE, ROOM COUNT, ZONING IN THE LISTING SHOULD BE VERIFIED BY YOUR OWN ATTORNEY, ARCHITECT OR ZONING EXPERT. IF YOUR PROPERTY IS CURRENTLY LISTED WITH ANOTHER REAL ESTATE BROKER, PLEASE DISREGARD THIS OFFER. IT IS NOT OUR INTENTION TO SOLICIT THE OFFERINGS OF OTHER REAL ESTATE BROKERS. WE COOPERATE WITH THEM FULLY. EQUAL HOUSING OPPORTUNITY.



Office Property For Lease

22 Park Place Great Neck Plaza, NY 11021



For More Information:

Rozita Soomekh- Results Powered by Rozita

Licensed Associate Real Estate Broker
Douglas Elliman Commercial - Long Island
516.498.2152
rozita.soomekh@elliman.com

 **Douglas Elliman**
Commercial

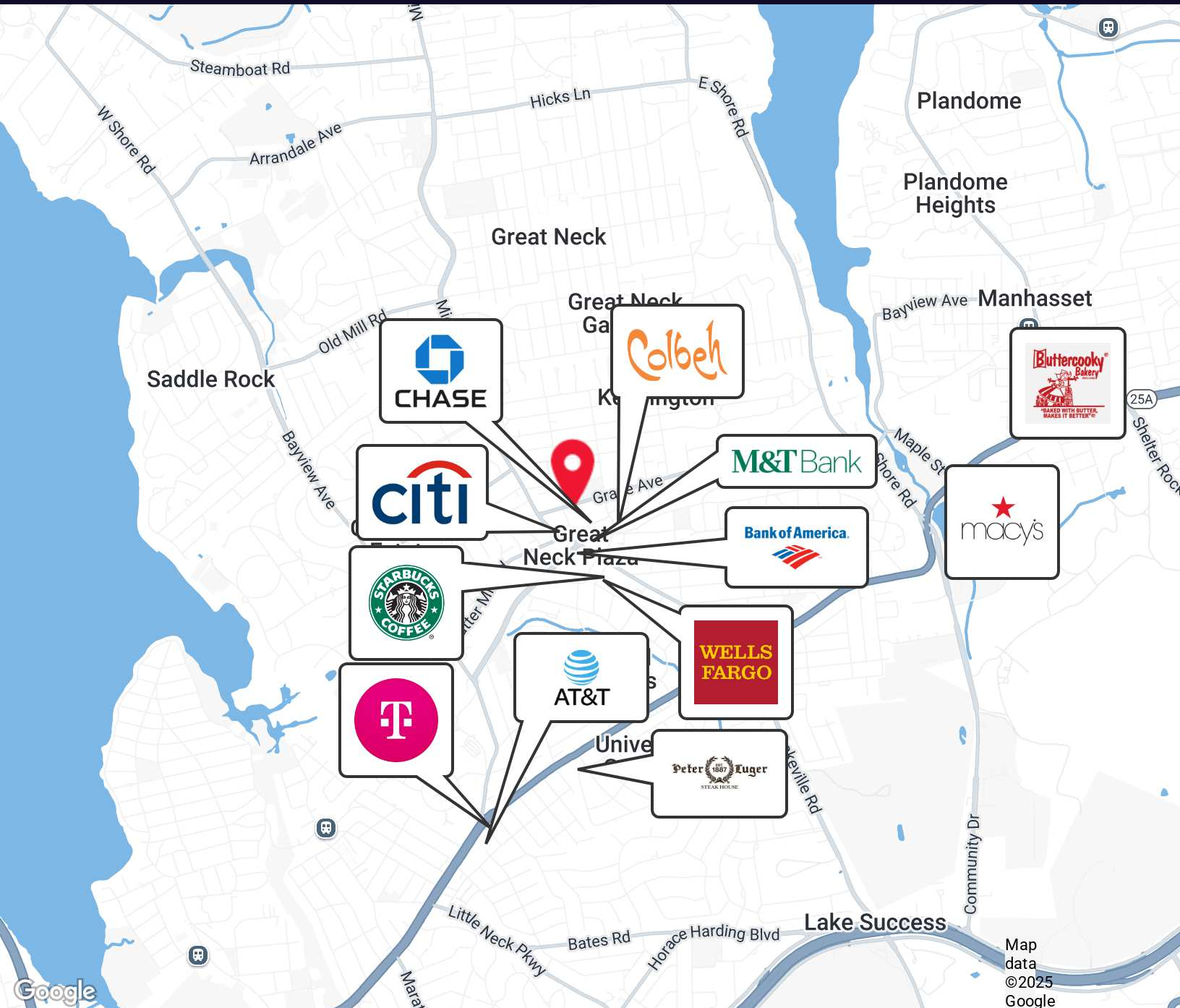
WWW.ELLIMANCOMMERCIAL.COM

THE PROPERTY CONTAINED WITHIN THIS DOCUMENT IS BEING EXCLUSIVELY REPRESENTED BY DOUGLAS ELLIMAN REAL ESTATE COMMERCIAL DIVISION, 550 SMITHTOWN BYPASS STE. 117 SMITHTOWN, NY 11787 631.858.2405 © 2023 DOUGLAS ELLIMAN COMMERCIAL OF LI, LLC. ALL MATERIAL PRESENTED HEREIN IS INTENDED FOR INFORMATION PURPOSES ONLY. WHILE THIS INFORMATION IS BELIEVED TO BE CORRECT, IT IS REPRESENTED SUBJECT TO ERRORS, OMISSIONS, CHANGES OR WITHDRAWAL WITHOUT NOTICE. ALL PROPERTY INFORMATION, INCLUDING, BUT NOT LIMITED TO SQUARE FOOTAGE, ROOM COUNT, ZONING IN THE LISTING SHOULD BE VERIFIED BY YOUR OWN ATTORNEY, ARCHITECT OR ZONING EXPERT. IF YOUR PROPERTY IS CURRENTLY LISTED WITH ANOTHER REAL ESTATE BROKER, PLEASE DISREGARD THIS OFFER. IT IS NOT OUR INTENTION TO SOLICIT THE OFFERINGS OF OTHER REAL ESTATE BROKERS. WE COOPERATE WITH THEM FULLY. EQUAL HOUSING OPPORTUNITY.



Office Property For Lease

22 Park Place Great Neck Plaza, NY 11021



For More Information:

Rozita Soomekh- Results Powered by Rozita

Licensed Associate Real Estate Broker
Douglas Elliman Commercial - Long Island
516.498.2152
rozita.soomekh@elliman.com

Douglas Elliman
Commercial

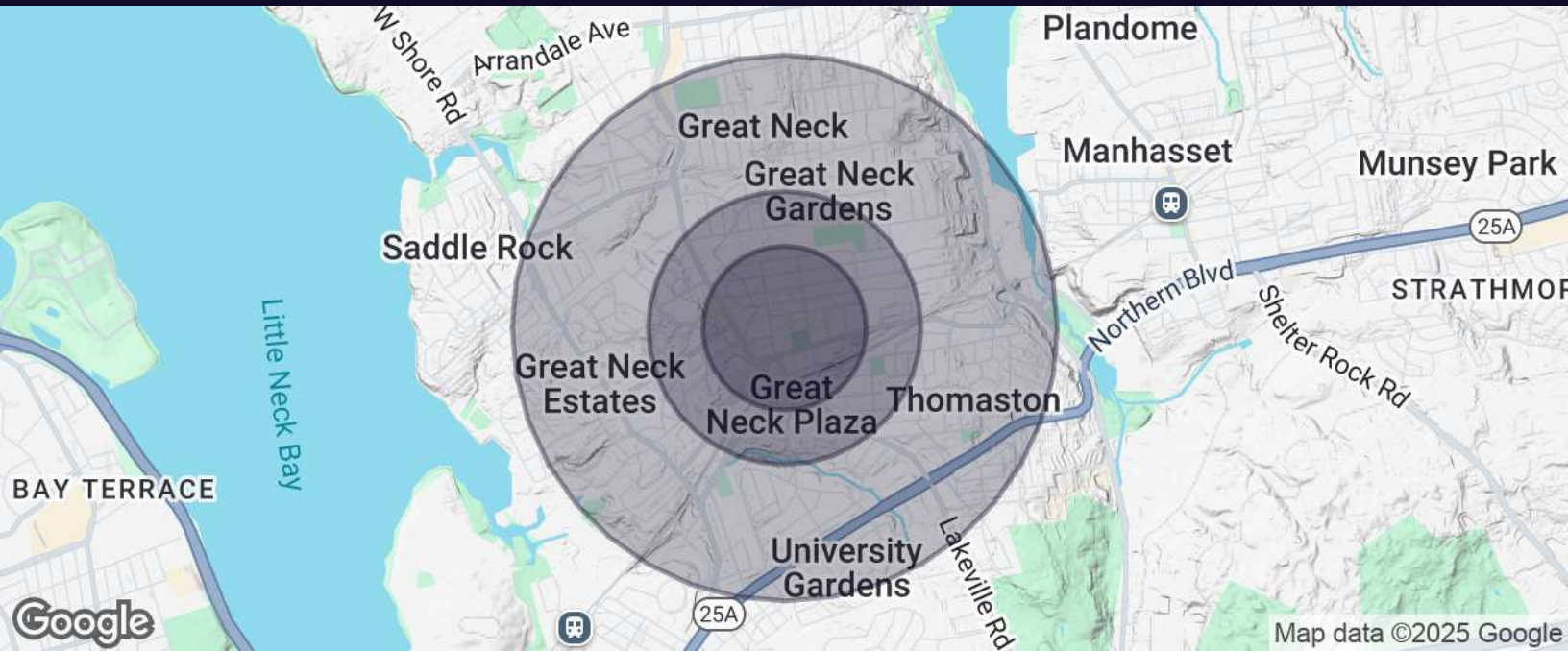
WWW.ELLIMANCOMMERCIAL.COM

THE PROPERTY CONTAINED WITHIN THIS DOCUMENT IS BEING EXCLUSIVELY REPRESENTED BY DOUGLAS ELLIMAN REAL ESTATE COMMERCIAL DIVISION, 550 SMITHTOWN BYPASS STE. 117 SMITHTOWN, NY 11787 631.858.2405 © 2023 DOUGLAS ELLIMAN COMMERCIAL OF LI, LLC. ALL MATERIAL PRESENTED HEREIN IS INTENDED FOR INFORMATION PURPOSES ONLY. WHILE THIS INFORMATION IS BELIEVED TO BE CORRECT, IT IS REPRESENTED SUBJECT TO ERRORS, OMISSIONS, CHANGES OR WITHDRAWAL WITHOUT NOTICE. ALL PROPERTY INFORMATION, INCLUDING, BUT NOT LIMITED TO SQUARE FOOTAGE, ROOM COUNT, ZONING IN THE LISTING SHOULD BE VERIFIED BY YOUR OWN ATTORNEY, ARCHITECT OR ZONING EXPERT. IF YOUR PROPERTY IS CURRENTLY LISTED WITH ANOTHER REAL ESTATE BROKER, PLEASE DISREGARD THIS OFFER. IT IS NOT OUR INTENTION TO SOLICIT THE OFFERINGS OF OTHER REAL ESTATE BROKERS. WE COOPERATE WITH THEM FULLY. EQUAL HOUSING OPPORTUNITY.



Office Property For Lease

22 Park Place Great Neck Plaza, NY 11021



Population	0.3 Miles	0.5 Miles	1 Mile
Total Population	3,008	9,520	25,064
Average Age	50	47	44
Average Age (Male)	46	44	42
Average Age (Female)	54	49	46

Households & Income	0.3 Miles	0.5 Miles	1 Mile
Total Households	1,371	4,178	9,541
# of Persons per HH	2.2	2.3	2.6
Average HH Income	\$163,695	\$173,131	\$193,239
Average House Value	\$933,079	\$980,679	\$1,129,083

For More Information:

Rozita Soomekh- Results Powered by Rozita

Licensed Associate Real Estate Broker
Douglas Elliman Commercial - Long Island
516.498.2152
rozita.soomekh@elliman.com



WWW.ELLIMANCOMMERCIAL.COM

THE PROPERTY CONTAINED WITHIN THIS DOCUMENT IS BEING EXCLUSIVELY REPRESENTED BY DOUGLAS ELLIMAN REAL ESTATE COMMERCIAL DIVISION, 550 SMITHTOWN BYPASS STE. 117 SMITHTOWN, NY 11787 631.858.2405 © 2023 DOUGLAS ELLIMAN COMMERCIAL OF LI, LLC. ALL MATERIAL PRESENTED HEREIN IS INTENDED FOR INFORMATION PURPOSES ONLY. WHILE THIS INFORMATION IS BELIEVED TO BE CORRECT, IT IS REPRESENTED SUBJECT TO ERRORS, OMISSIONS, CHANGES OR WITHDRAWAL WITHOUT NOTICE. ALL PROPERTY INFORMATION, INCLUDING, BUT NOT LIMITED TO SQUARE FOOTAGE, ROOM COUNT, ZONING IN THE LISTING SHOULD BE VERIFIED BY YOUR OWN ATTORNEY, ARCHITECT OR ZONING EXPERT. IF YOUR PROPERTY IS CURRENTLY LISTED WITH ANOTHER REAL ESTATE BROKER, PLEASE DISREGARD THIS OFFER. IT IS NOT OUR INTENTION TO SOLICIT THE OFFERINGS OF OTHER REAL ESTATE BROKERS. WE COOPERATE WITH THEM FULLY. EQUAL HOUSING OPPORTUNITY.

WE ARE COMMERCIAL REAL ESTATE

Commercial real estate involves more than just property listings. To get the most effective results, you need to partner with a company that has a full complement of services and an in-depth team of professionals to help with all of your needs. Douglas Elliman's team of commercial real estate experts is committed to unrivaled performance standards when working with tenants, investors, purchasers and owners. We represent all major property types including office, industrial, retail, apartment and land. We treat each assignment with commitment and focus, from a single transaction in a local market to national and multi-market assignments. We help negotiate contracts, coordinate construction and provide both property management as well as ongoing advisory service to satisfy your changing real estate needs. Our breadth of market knowledge, unprecedented network and use of innovative technology extend to all types of property transactions.

For More Information:

Rozita Soomekh- Results Powered by Rozita

Licensed Associate Real Estate Broker

516.498.2152

rozita.soomekh@elliman.com

Office: 631.858.2405

Fax: 631.543.0851

550 Smithtown Bypass

Smithtown, NY 11787