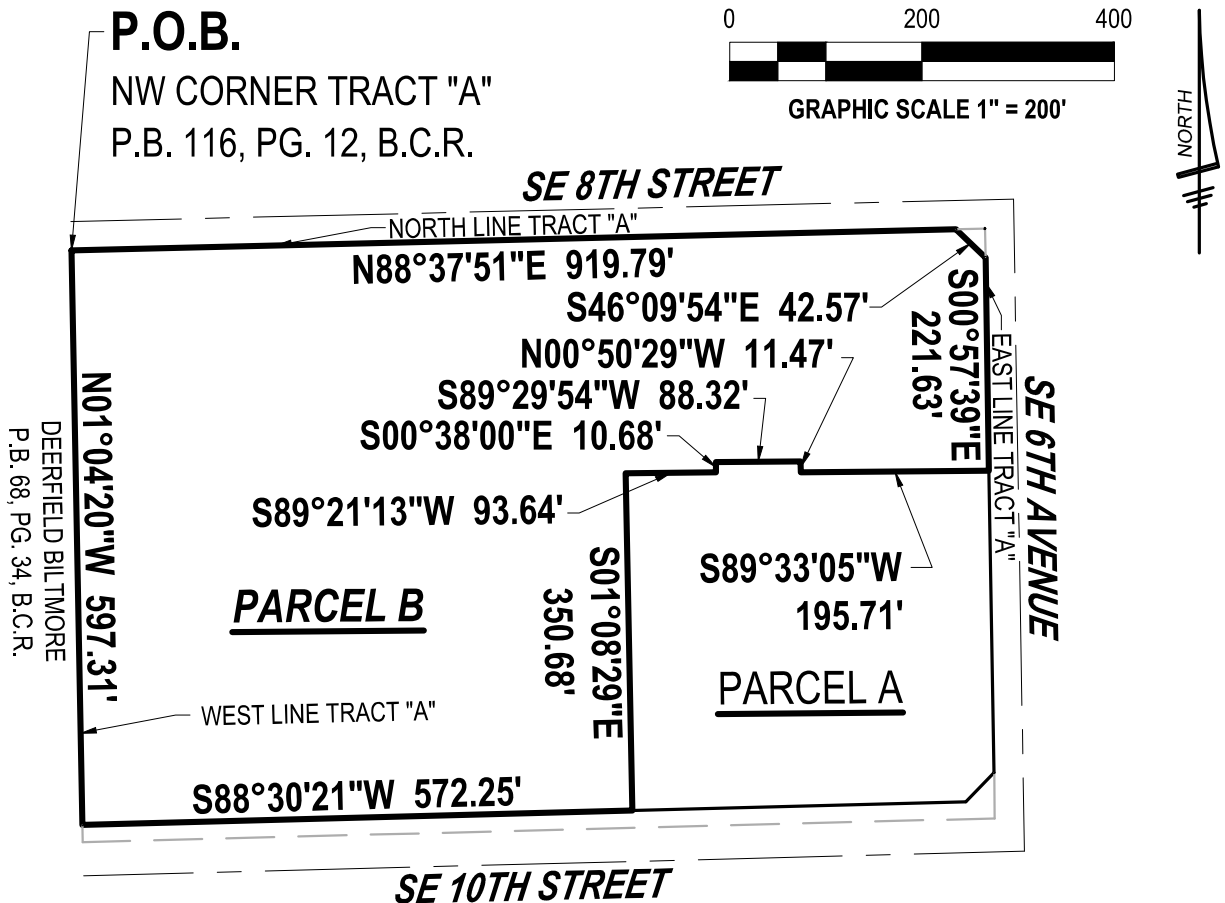


SKETCH AND DESCRIPTION ZION EVANGELICAL LUTHERAN CHURCH PARCEL B

A PORTION OF TRACT "A", **ZION EVANGELICAL LUTHERAN CHURCH**, ACCORDING TO THE PLAT THEREOF AS RECORDED IN PLAT BOOK 116, PAGE 12, OF THE PUBLIC RECORDS OF BROWARD COUNTY FLORIDA, BEING MORE PARTICULARLY DESCRIBED AS FOLLOWS:

BEGINNING AT THE NORTHWEST CORNER OF TRACT "A" AS RECORDED IN SAID PLAT, THENCE NORTH 88°37'51" EAST, ALONG THE NORTH LINE OF SAID TRACT "A", A DISTANCE OF 919.79 FEET; THENCE SOUTH 46°09'54" EAST A DISTANCE OF 42.57 FEET; THENCE SOUTH 00°57'39" EAST, ALONG THE EAST LINE OF SAID TRACT "A", A DISTANCE OF 221.63 FEET; THENCE SOUTH 89°33'05" WEST A DISTANCE OF 195.71 FEET; THENCE NORTH 00°50'29" WEST A DISTANCE OF 11.47 FEET; THENCE SOUTH 89°29'54" WEST A DISTANCE OF 88.32 FEET; THENCE SOUTH 00°38'00" EAST A DISTANCE OF 10.68 FEET; THENCE SOUTH 89°21'13" WEST A DISTANCE OF 93.64 FEET; THENCE SOUTH 01°08'29" EAST A DISTANCE OF 350.68 FEET; THENCE SOUTH 88°30'21" WEST, A DISTANCE OF 572.25 FEET; THENCE NORTH 01°04'20" WEST, ALONG THE WEST LINE OF SAID TRACT "A" A DISTANCE OF 597.31 FEET TO THE **POINT OF BEGINNING**.

SAID **PARCEL B** SITUATE IN BROWARD COUNTY HAVING AN AREA OF 433,783 SQUARE FEET, 9.958 ACRES.



ABBREVIATIONS:

- B.C.R. = BROWARD COUNTY RECORDS
- P.B. = PLAT BOOK
- PG. = PAGE
- P.O.B. = POINT OF BEGINNING
- P.O.C. = POINT OF COMMENCEMENT