

C&C Equipment Rental

\$1,600,000 FOR SALE

120 Bellemonte Ave Hawley, PA 18428



Well established, turn key, rental equipment business for sale in Hawley PA, located in the northern Poconos. The sale includes an extensive array of equipment from excavators and skid steers to power tools pumps and party rentals. In business since 1995, they are the go-to rental equipment business in the Lake Wallenpaupack area from contractors to homeowners. The owner is ready to retire and is including the real estate consisting of .97 acres, a 3,188 square foot building with 389' of road frontage on US Route 6 with traffic counts in excess of 7,900 vehicles per day, as well as all the vast inventory of rental equipment. This is a great opportunity to own your own business or expand your current operation.



Eric Ehrhardt

Realtor

570-470-5912

Eric@TheLakeRegionRealtors.com

Judy Rodonski

Realtor

570-470-2866

jrodonski@gmail.com

2483 Route 6, Hawley, PA 18428

Office: 570-226-4518





PROPERTY FEATURES:

Price: \$1,600,000

Lot Size: See map Attached

Parking: Outdoor/10 spots

Zoning: C-1 General Commercial

UTILITIES:

- Lighting - Fluorescent
- Gas - Eastern Propane
- Water - City
- Sewer - City
- Heating - Gas

BUILDING FEATURES:

Total Building SF: 3,188

Year Built: 1995

Parking Ratio: 10 spots

Stories: 1

Clear Ceiling Height: 10'

Dock-High Doors/Loading: 3

- 10'x8'
- 8'x7'
- 10'x9'



Eric Ehrhardt
Realtor

570-470-5912

Eric@TheLakeRegionRealtors.com

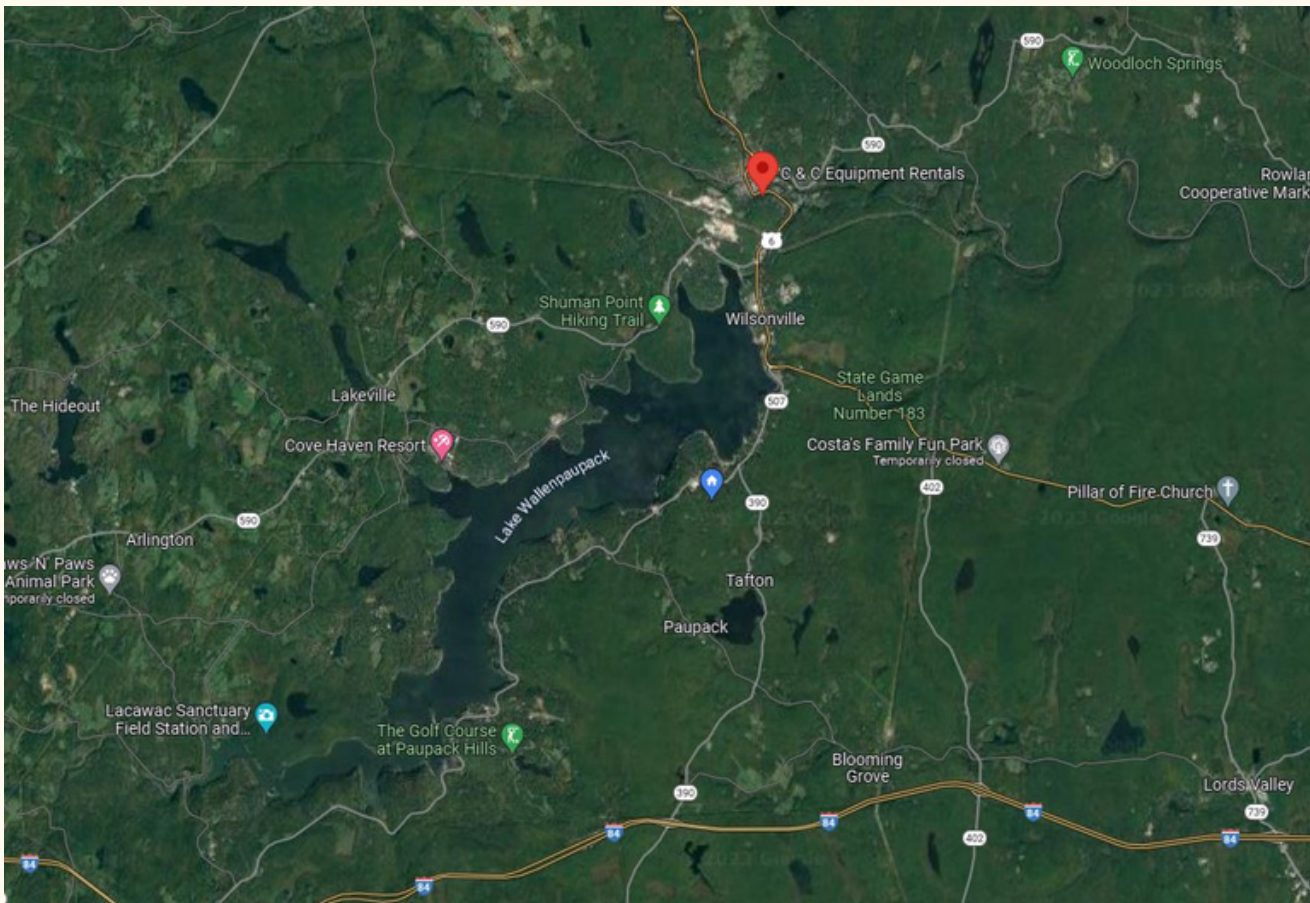
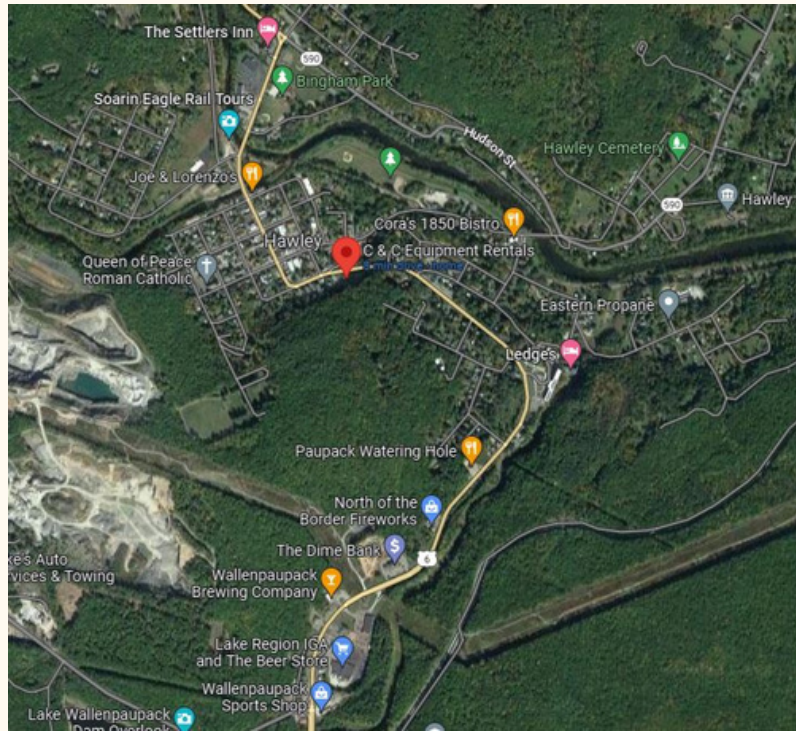
Judy Rodonski
Realtor

570-470-2866

jrodonski@gmail.com

Davis R.
Chantre
REALTORS
commercial
group





We obtained the information above from sources we believe to be reliable. However, we have not verified its accuracy and make no guarantee, warranty or representation about it. It is submitted subject to the possibility of errors, omissions, change of price, rental or other conditions, prior sale, lease or financing, or withdrawal without notice. We include projections, opinions, assumptions or estimate – for example only, and they may not represent current or future performance of the property. You and your tax and legal advisors should conduct your own investigation of the property and transaction.