

FOR LEASE

Medical Office Building
5 Journey, Aliso Viejo, CA 92656

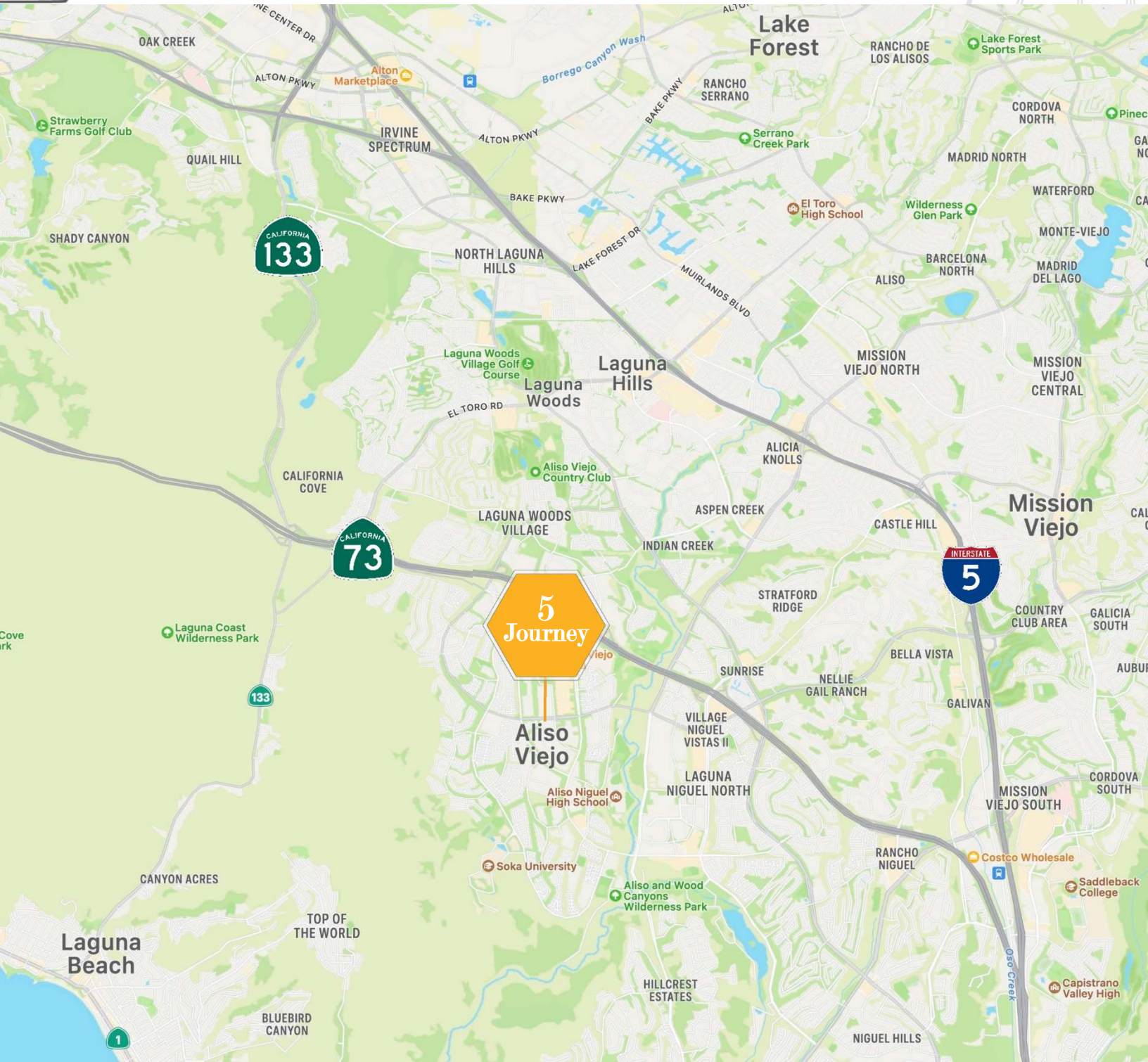


HIGHLIGHTS

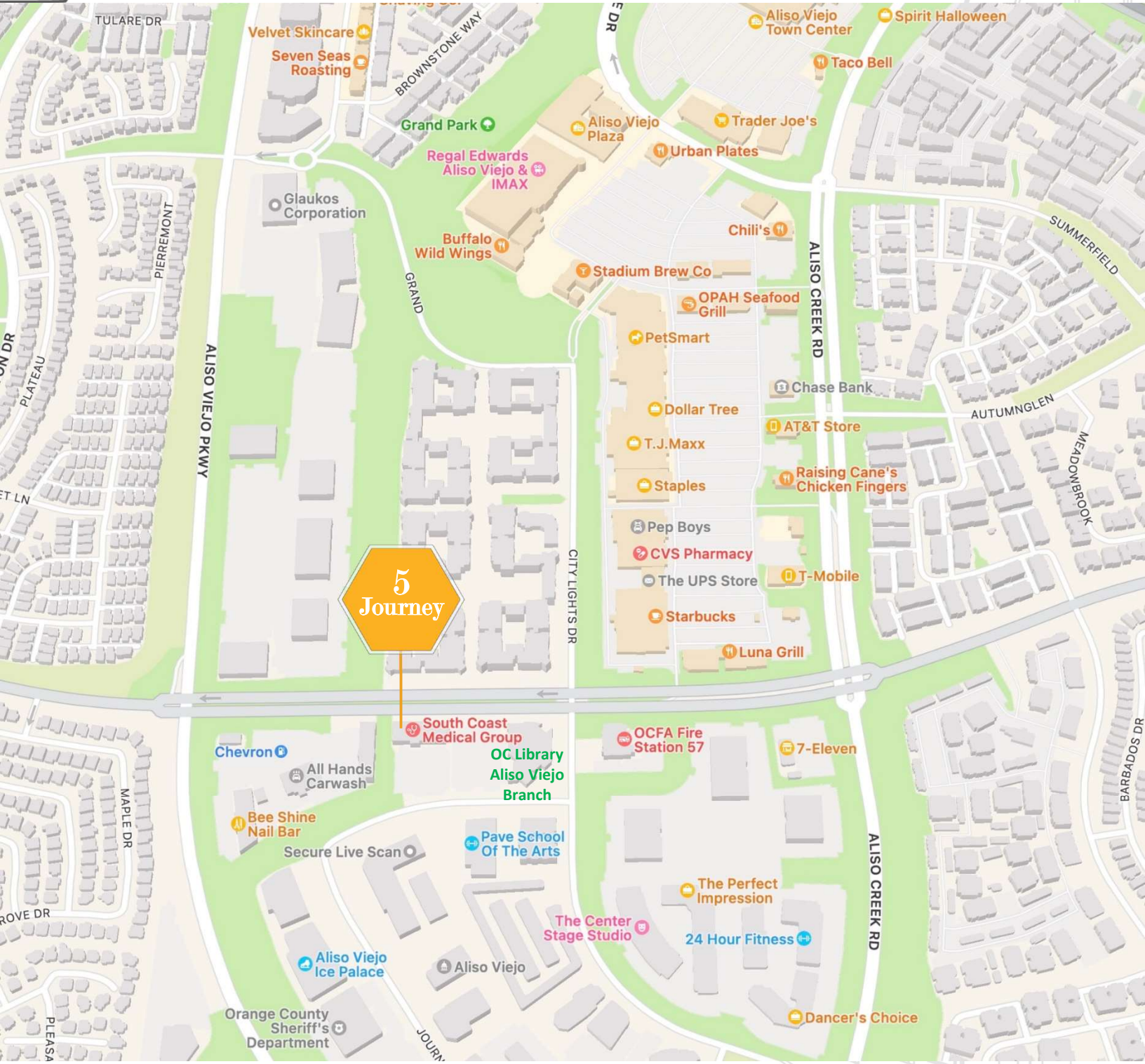
- ✓ 23,600 Square Foot Premier Medical Building Near Amenities
- ✓ \$2.50/sf NNN monthly lease rate (\pm \$0.95/sf NNN charges)
- ✓ Common area conference room available for tenant use
- ✓ Suite 100 – 3,006 sf – Vacant (P.T. build-out)
- ✓ Suite 150 – 2,272 sf – Vacant (pediatrics build-out)
- ✓ Suite 230 – 1,476 sf – Vacant (dental build-out)



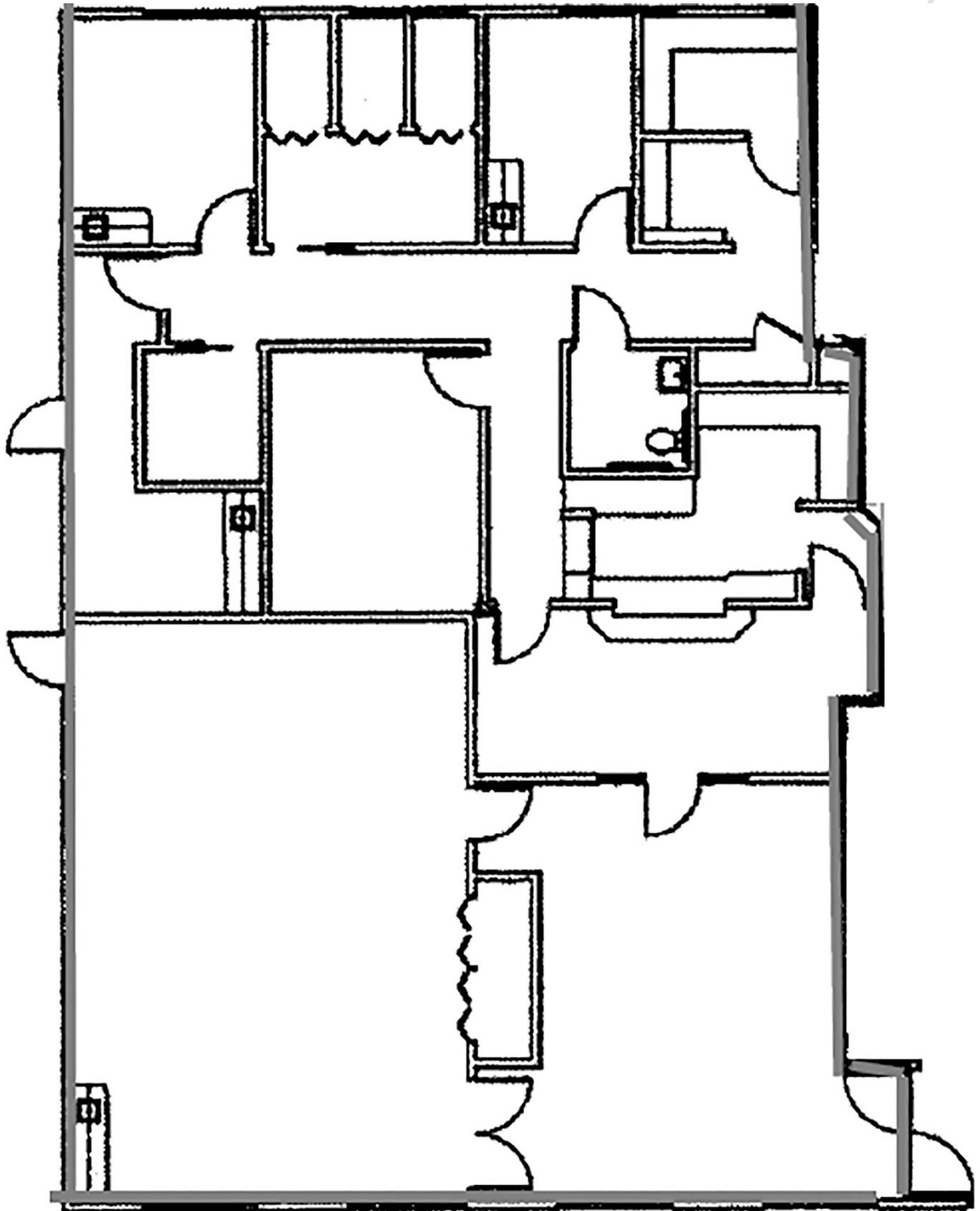
LOCATION



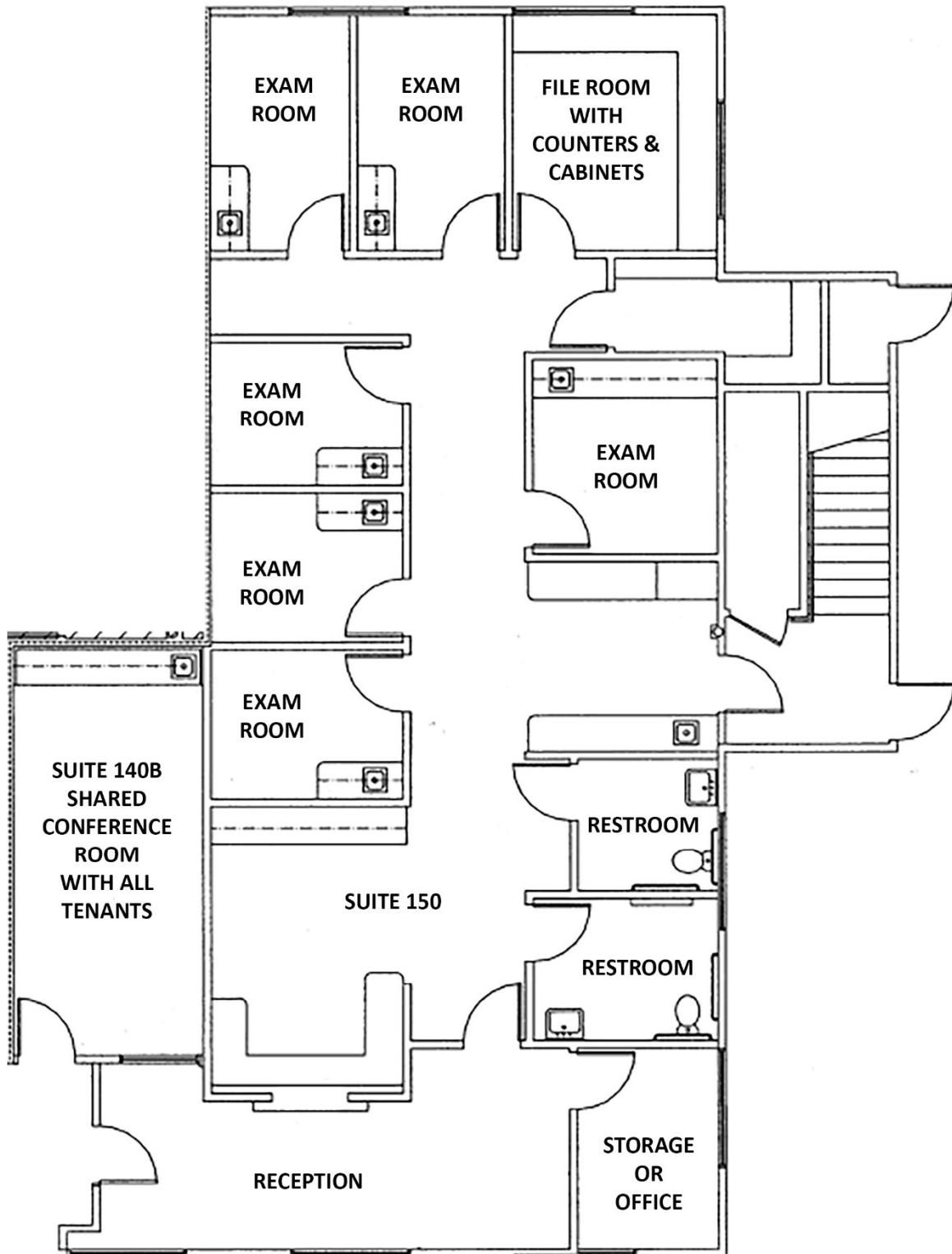
AMENITIES



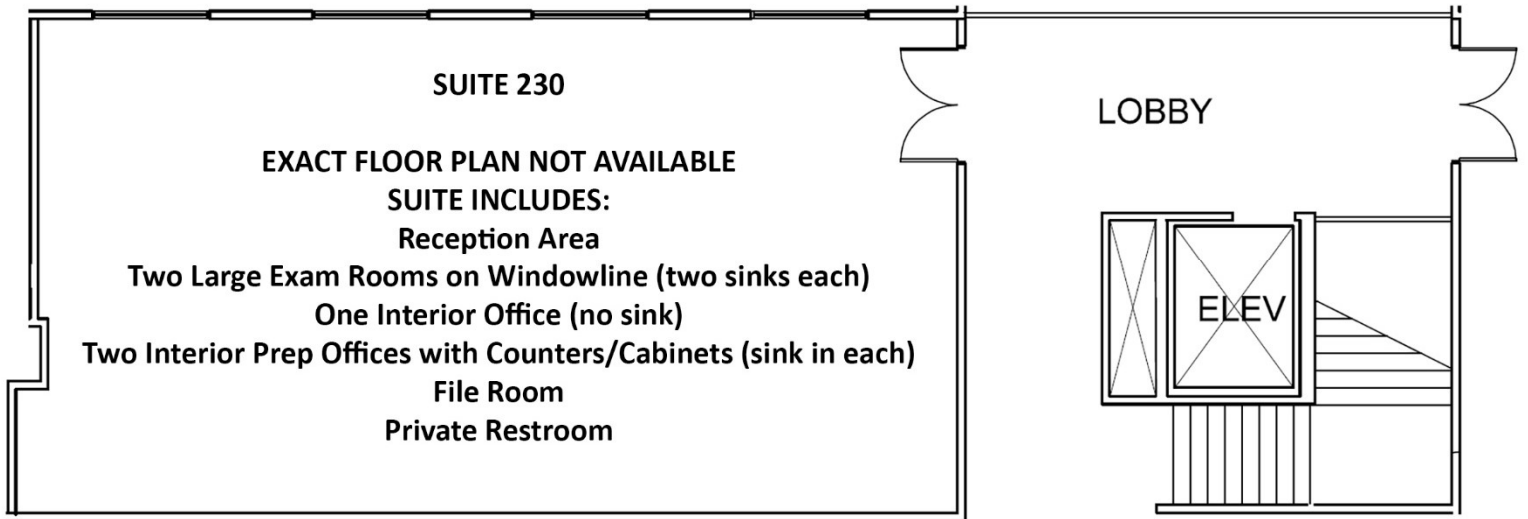
SUITE 100 (3,006 sf)



SUITE 150 (2,272 sf)



SUITE 230 (1,476 sf)





Geoff DeWolf
Direct 949-576-2751
geoff@economosdewolf.com
License #01319312

The information contained in this document is proprietary to Economos DeWolf, Inc. and shall be used solely for the purposes of evaluating this proposal. All such documentation and information remains the property of Economos DeWolf, Inc. and shall be kept confidential. Reproduction of any part of this document is authorized only to the extent necessary for its evaluation. All information contained herein is from sources deemed reliable; however, no representation or warranty is made as to the accuracy thereof.