



## 100 Acres HWY 290 Frontage

HWY 290, Prairie View, TX 77446



**Mindy Flint**

Evan Lloyd Properties

15622 Bending Birch Dr, Cypress, TX 77433

[mindyflint@msn.com](mailto:mindyflint@msn.com)

(281) 570-3923



# 100 Acres HWY 290 Frontage

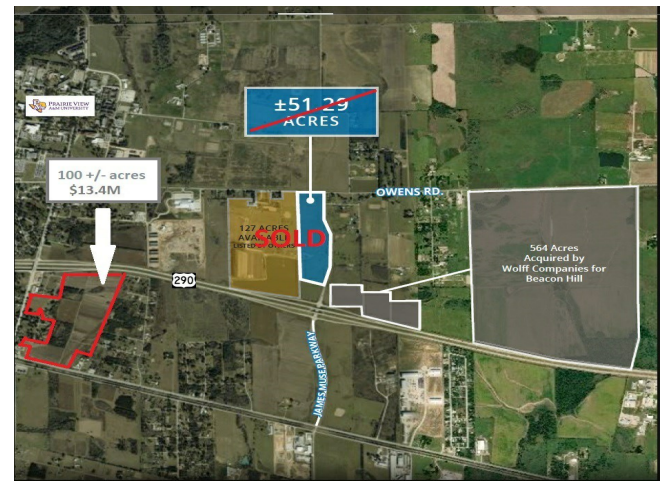
\$11,900,000

Located in Waller County which is a rapidly growing county in southeast Texas. Minutes from Prairie View A&M with 522 feet of frontage on University Dr. 1304' Frontage on Business 290 and 1428' Frontage on HWY 290. Frontage on 3 Major Throughfares! Not in Flood...

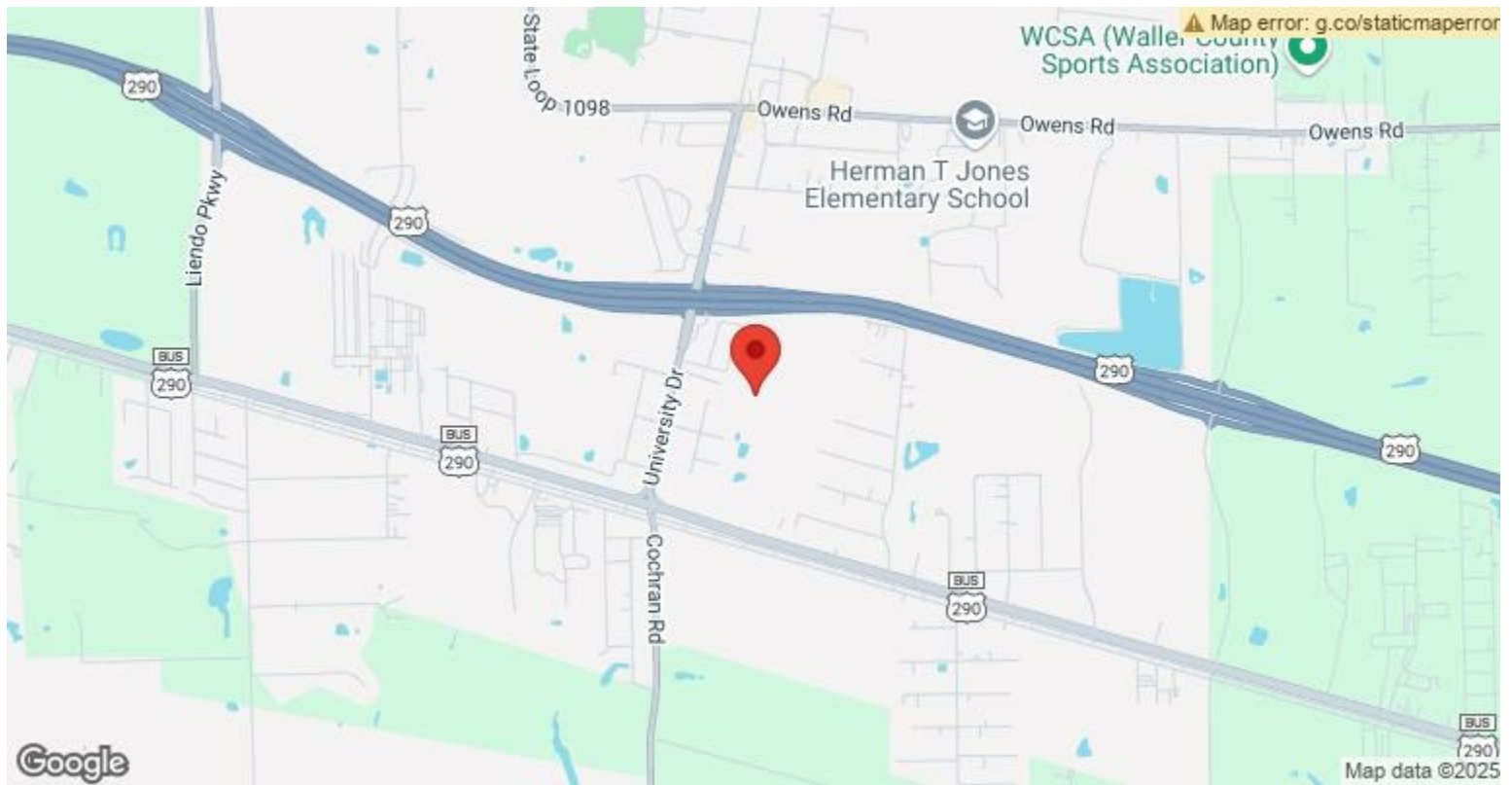
- Frontage on 3 Major Throughfares
- Not in Flood Zone
- Heavy Daily Traffic Volume - 36,907 Vehicles every 24 hrs
- Low Taxes

For more information visit:

<https://www.loopnet.com/Listing/HWY-290-Prairie-View-TX/25442349/>



Price:	\$11,900,000
Property Type:	Land
Property Subtype:	Residential
Proposed Use:	Mixed Use
Sale Type:	Investment or Owner User
Total Lot Size:	100 AC
No. Lots:	1
APN / Parcel ID:	312400-038-000-100



## HWY 290, Prairie View, TX 77446

Located in Waller County which is a rapidly growing county in southeast Texas. Minutes from Prairie View A&M with 522 feet of frontage on University Dr. 1304' Frontage on Business 290 and 1428' Frontage on HWY 290. Frontage on 3 Major Throughfares! Not in Flood Zone! Ready for Development! Perfect location for a residential subdivision, industrial park or a combination of both. Please verify all information.



# Property Photos

