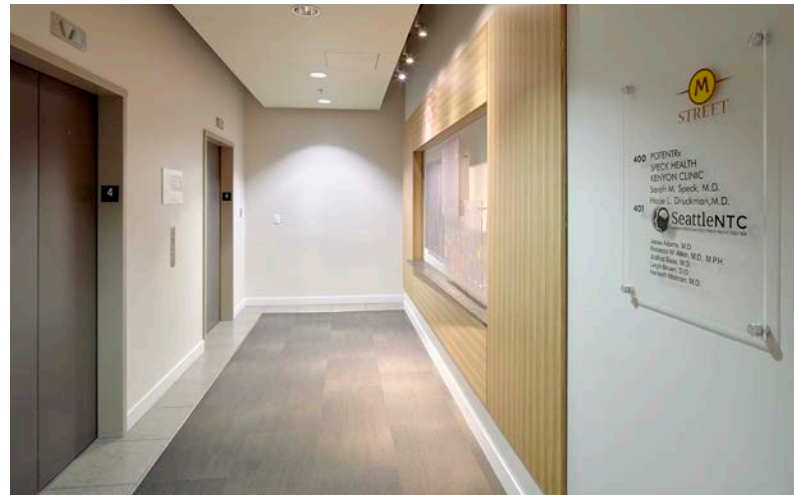


FOR LEASE

M STREET MEDICAL BUILDING

805 Madison Street, Seattle, WA 98104



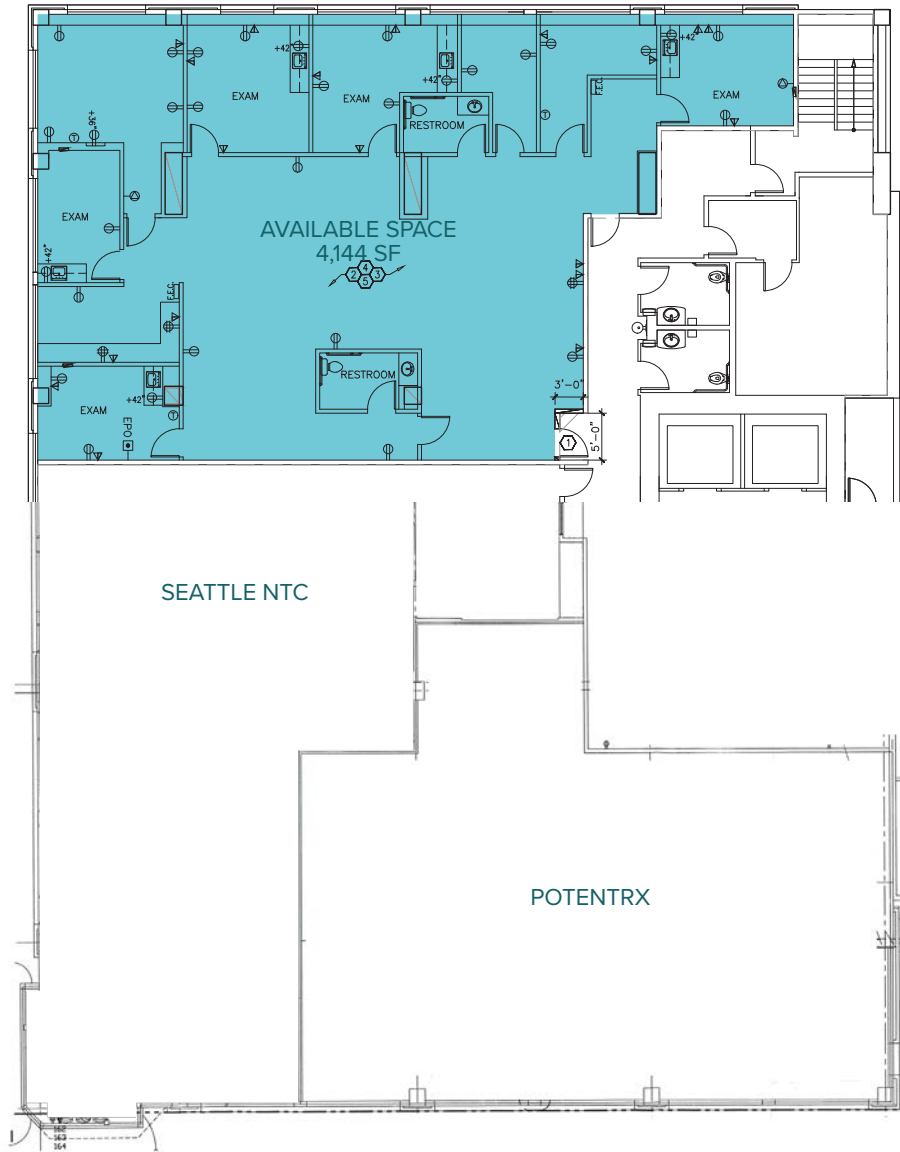


M - STREET HIGHLIGHTS

- New lobby and common area improvements
- Excellent central location – walking distance to UW Medicine/Harborview Medical Center, Virginia Mason, Swedish First Hill, The Polyclinic Madison Centre and Downtown Seattle office/retail core
- 3.0 stalls per 1,000 SF parking provided in a public and reserved parking garage
- Easy accessible patient garage off 8th Avenue
- On-site property management office
- Exterior building signage available off Madison Street
- Direct access to Interstate 5 and 90 via James Street and Cherry Street
- On-site grocery/convenience store with abundant amenities within walking distance

FLOOR PLAN

FLOOR	SIZE ±RSF	CONDITION	AVAILABILITY
4	4,144	White-box with perimeter exam/offices with new entry	Now





M STREET
MEDICAL BUILDING



M STREET MEDICAL BUILDING

PLEASE CONTACT:

Paul Carr

Senior Vice President
+1 206 292 6005
paul.carr@cbre.com

Marcus Yamamoto

Senior Vice President
+1 206 292 6062
marcus.yamamoto@cbre.com

Katie Smith

Senior Associate
+1 206 292 6012
katie.m.smith@cbre.com

805 Madison Street, Seattle, WA 98104

© 2023 CBRE, Inc. All rights reserved. This information has been obtained from sources believed reliable, but has not been verified for accuracy or completeness. You should conduct a careful, independent investigation of the property and verify all information. Any reliance on this information is solely at your own risk. CBRE and the CBRE logo are service marks of CBRE, Inc. All other marks displayed on this document are the property of their respective owners, and the use of such logos does not imply any affiliation with or endorsement of CBRE. Photos herein are the property of their respective owners. Use of these images without the express written consent of the owner is prohibited.