



OFFICE SPACE FOR LEASE

- RBA: 121,914 SF
- Stories: 7
- Year Built: 1979
- Parking: Surface - 69 (3.00/1,000 SF)

BUILDING NOTES

- 0.5 Miles from I-270
- Less than 5 Miles from MD-200 (Intercounty Connector)
- 5 Miles from Shady Grove Metro Station (Red Line)
- Potential FLASH on MD-355 (1.2 Miles)
- 1.5 miles from Watkins Mill Interchange
- Adjacent to the National Institute of Standards & Technology
- More than 30 retail options in walking distance

KENNETH FELLOWS

kfellows@klnb.com | 301-222-0210

ROBERT PUGH

rpugh@klnb.com | 301-222-0211

KEIRY MARTINEZ

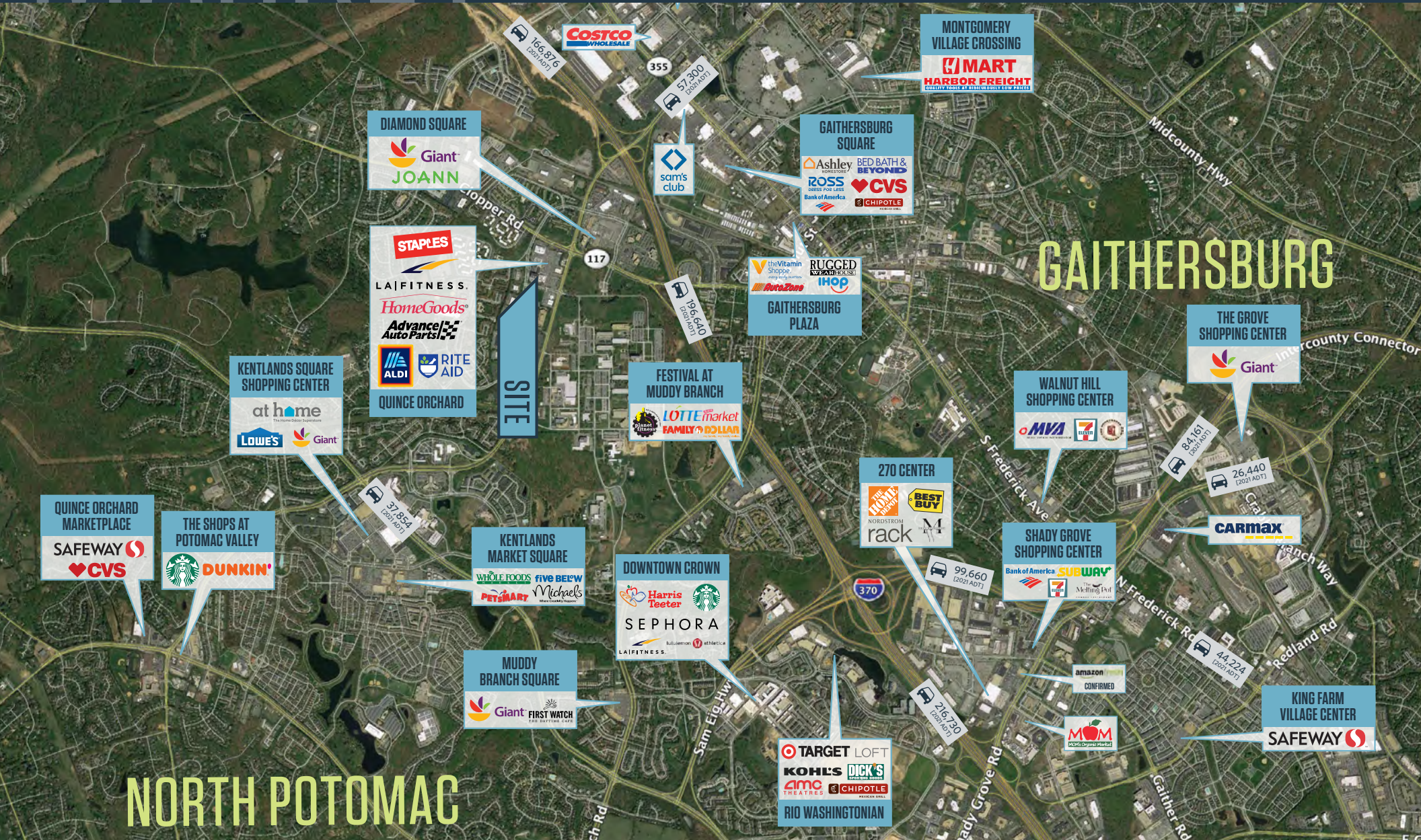
kmartinez@klnb.com | 703-334-5629

klnb.com

MARKET

THE OFFICES AT QUINCE ORCHARD

656 QUINCE ORCHARD ROAD, GAITHERSBURG, MARYLAND 20878



KENNETH FELLOWS
 kfellows@klnb.com | 301-222-0210

ROBERT PUGH
 rpugh@klnb.com | 301-222-0211

KEIRY MARTINEZ
 kmartinez@klnb.com | 703-334-5629



CLOSE-UP

THE OFFICES AT QUINCE ORCHARD

656 QUINCE ORCHARD ROAD, GAITHERSBURG, MARYLAND 20878



KENNETH FELLOWS
kfellows@klnb.com | 301-222-0210

ROBERT PUGH
rpugh@klnb.com | 301-222-0211

KEIRY MARTINEZ
kmartinez@klnb.com | 703-334-5629



FLOOR PLAN

THE OFFICES AT QUINCE ORCHARD

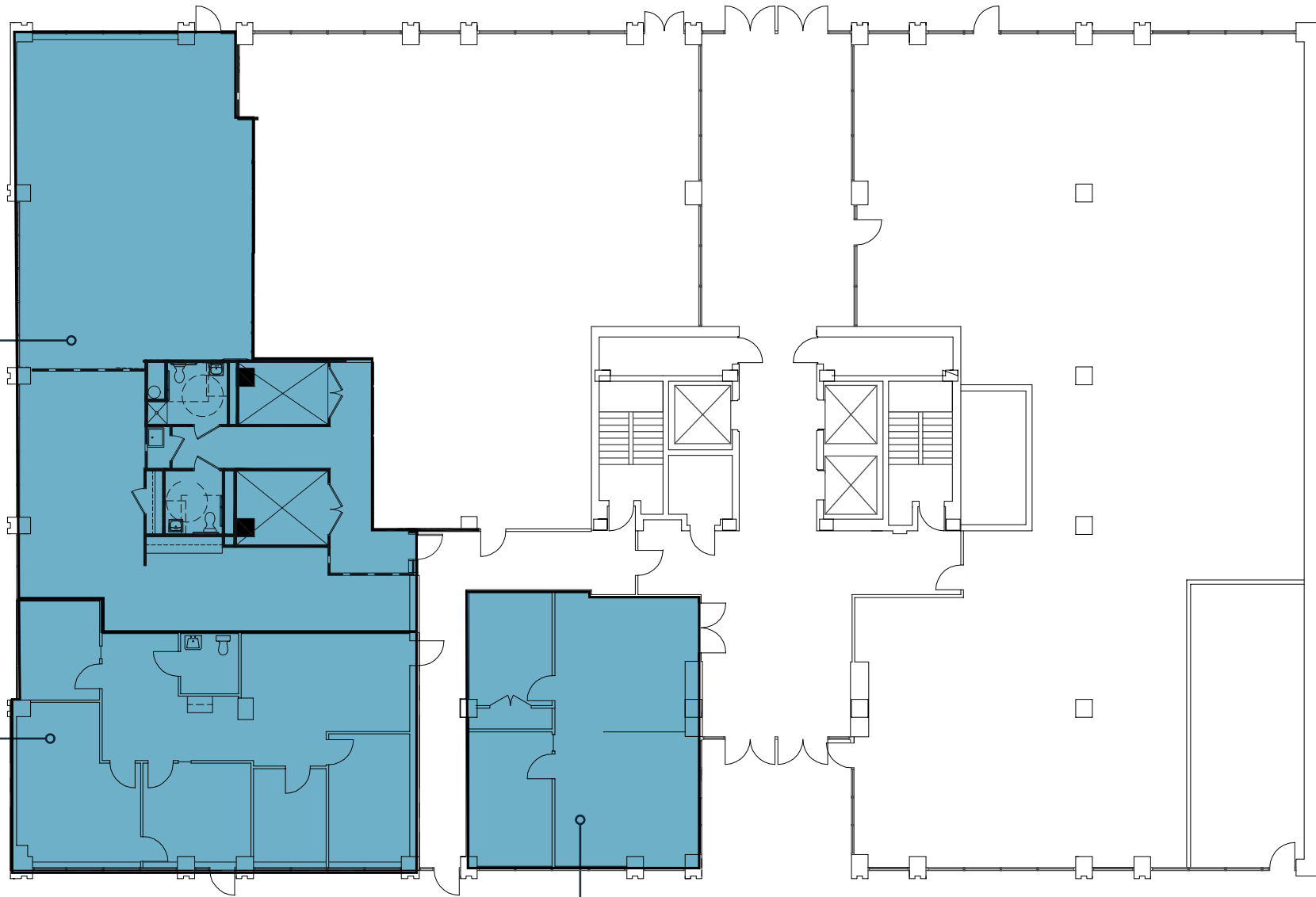
656 QUINCE ORCHARD ROAD, GAITHERSBURG, MARYLAND 20878

1ST FLOOR

SUITE 130: 2,797 SF

SUITE 120: 1,523 SF

SUITE 102: 971 SF



KENNETH FELLOWS

kfellows@klnb.com | 301-222-0210

ROBERT PUGH

rpugh@klnb.com | 301-222-0211

KEIRY MARTINEZ

kmartinez@klnb.com | 703-334-5629



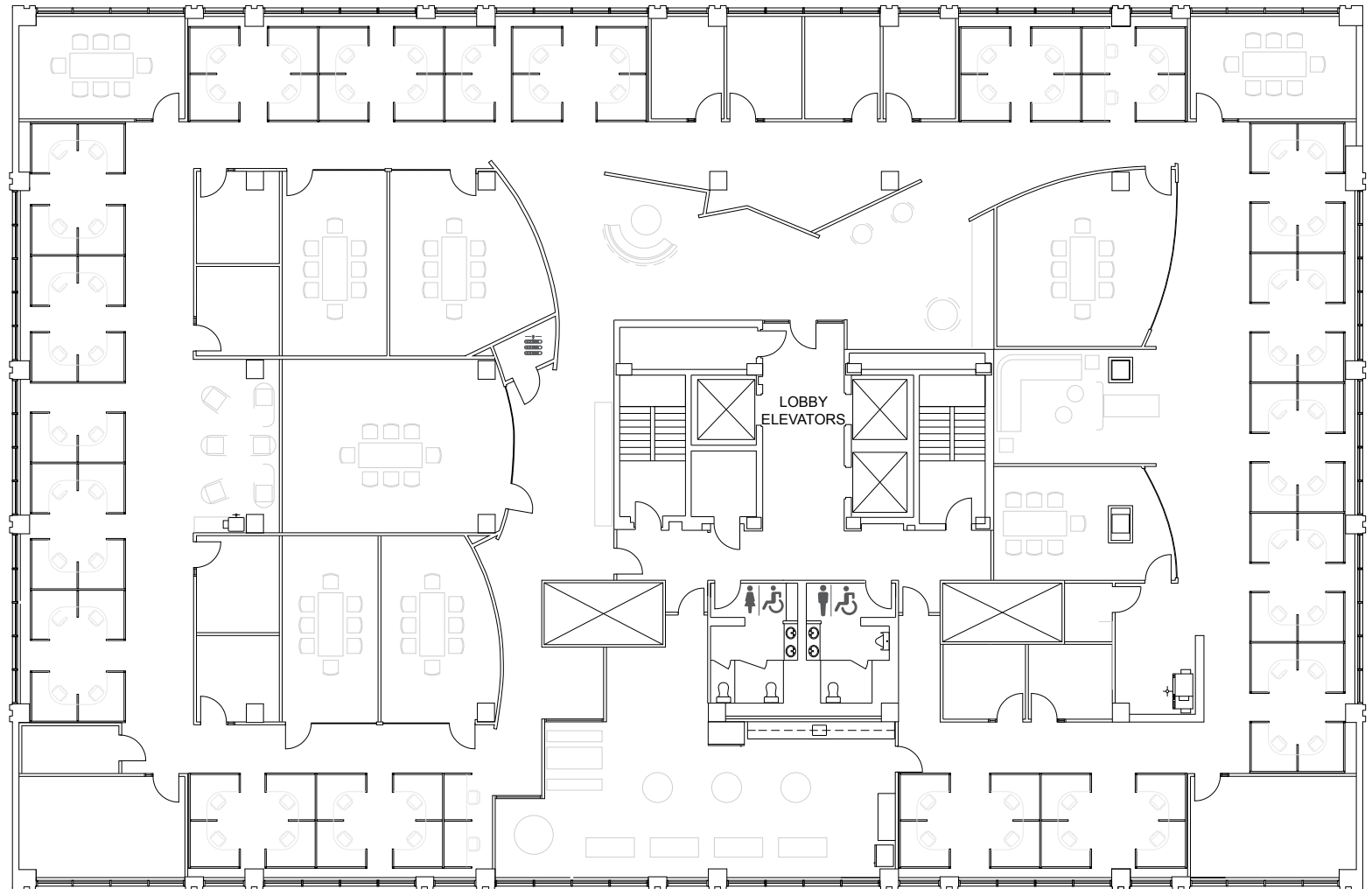
FLOOR PLAN

THE OFFICES AT QUINCE ORCHARD

656 QUINCE ORCHARD ROAD, GAITHERSBURG, MARYLAND 20878

4TH FLOOR

15,201 SF



KENNETH FELLOWS

kfellows@klnb.com | 301-222-0210

ROBERT PUGH

rpugh@klnb.com | 301-222-0211

KEIRY MARTINEZ

kmartinez@klnb.com | 703-334-5629



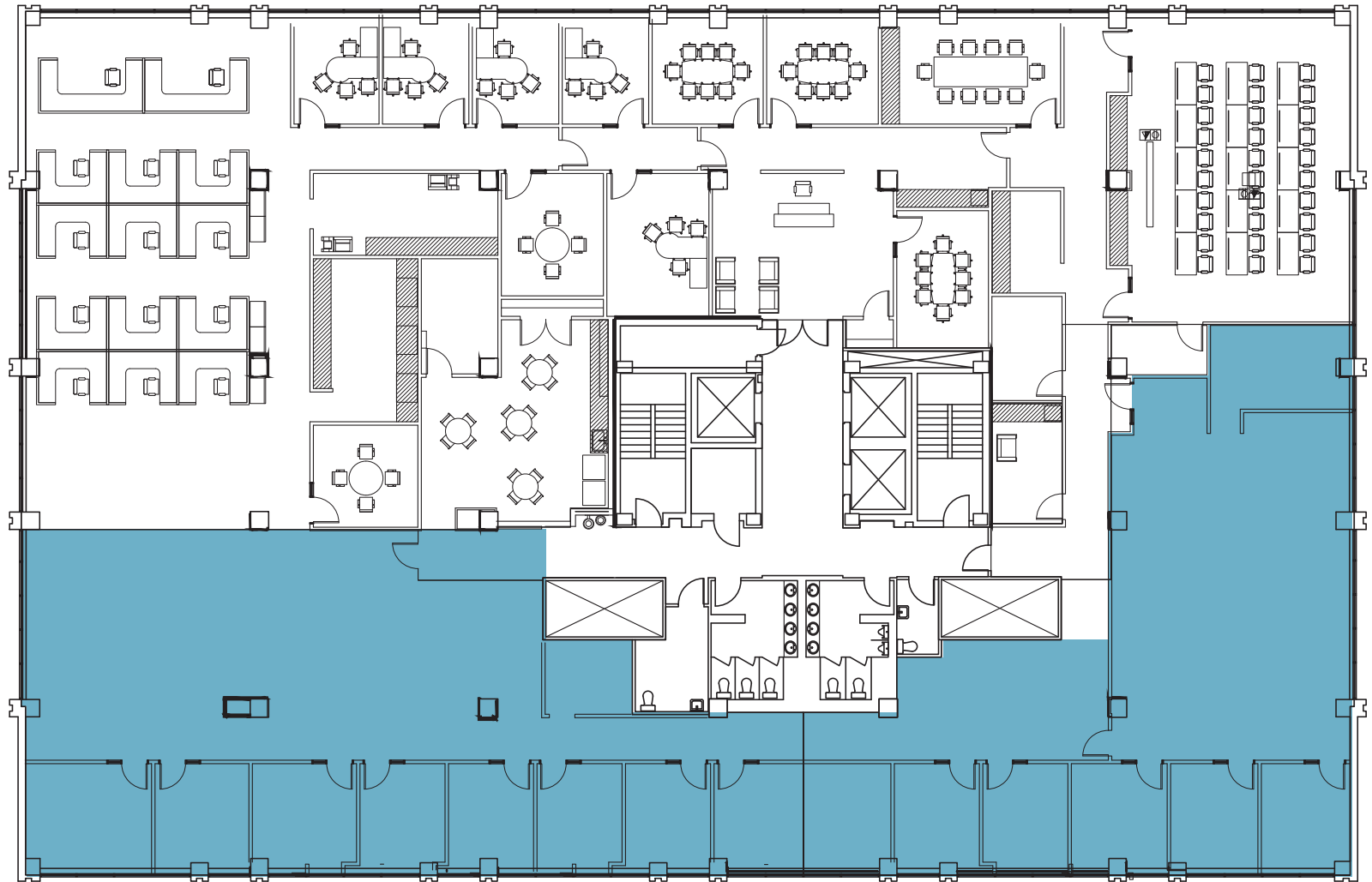
FLOOR PLAN

THE OFFICES AT QUINCE ORCHARD

656 QUINCE ORCHARD ROAD, GAITHERSBURG, MARYLAND 20878

5TH FLOOR

SUITE 510/520:
3,238 - 6,811 SF



KENNETH FELLOWS

kfellows@klnb.com | 301-222-0210

ROBERT PUGH

rpugh@klnb.com | 301-222-0211

KEIRY MARTINEZ

kmartinez@klnb.com | 703-334-5629

klnb

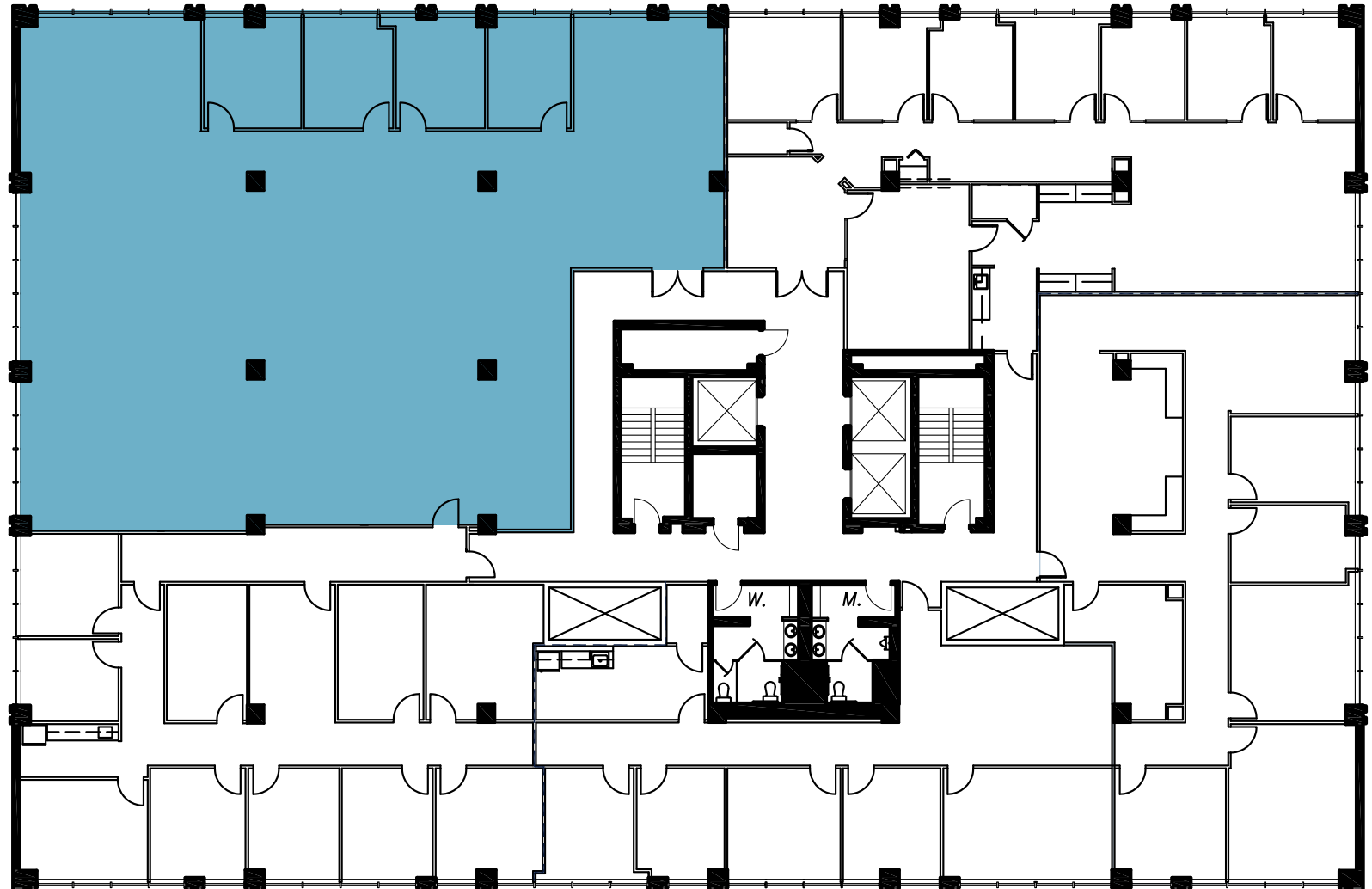
FLOOR PLAN

THE OFFICES AT QUINCE ORCHARD

656 QUINCE ORCHARD ROAD, GAITHERSBURG, MARYLAND 20878

7TH FLOOR

SUITE 740: 5,088 SF



KENNETH FELLOWS

kfellows@klnb.com | 301-222-0210

ROBERT PUGH

rpugh@klnb.com | 301-222-0211

KEIRY MARTINEZ

kmartinez@klnb.com | 703-334-5629





THE OFFICES AT QUINCE ORCHARD

656 QUINCE ORCHARD ROAD, GAITHERSBURG, MARYLAND 20878

FOR MORE INFORMATION, PLEASE CONTACT:

KENNETH FELLOWS

kfellows@klnb.com
301-222-0210

ROBERT PUGH

rpugh@klnb.com
301-222-0211

KEIRY MARTINEZ

kmartinez@klnb.com
703-334-5629

2273 Research Boulevard, Suite 150, Rockville, MD 20850

.....

klnb.com



[instagram.com/klnbcre](https://www.instagram.com/klnbcre)



[linkedin.com/company/klnb](https://www.linkedin.com/company/klnb)



[facebook.com/KLNBCRE](https://www.facebook.com/KLNBCRE)

[CLICK TO VIEW PROPERTY WEBSITE](#)

While we have no reason to doubt the accuracy of any of the information supplied, we cannot, and do not, guarantee its accuracy. All information should be independently verified prior to a purchase or lease of the property. We are not responsible for errors, omissions, misuse, or misinterpretation of information contained herein and make no warranty of any kind, express or implied, with respect to the property or any other matters.