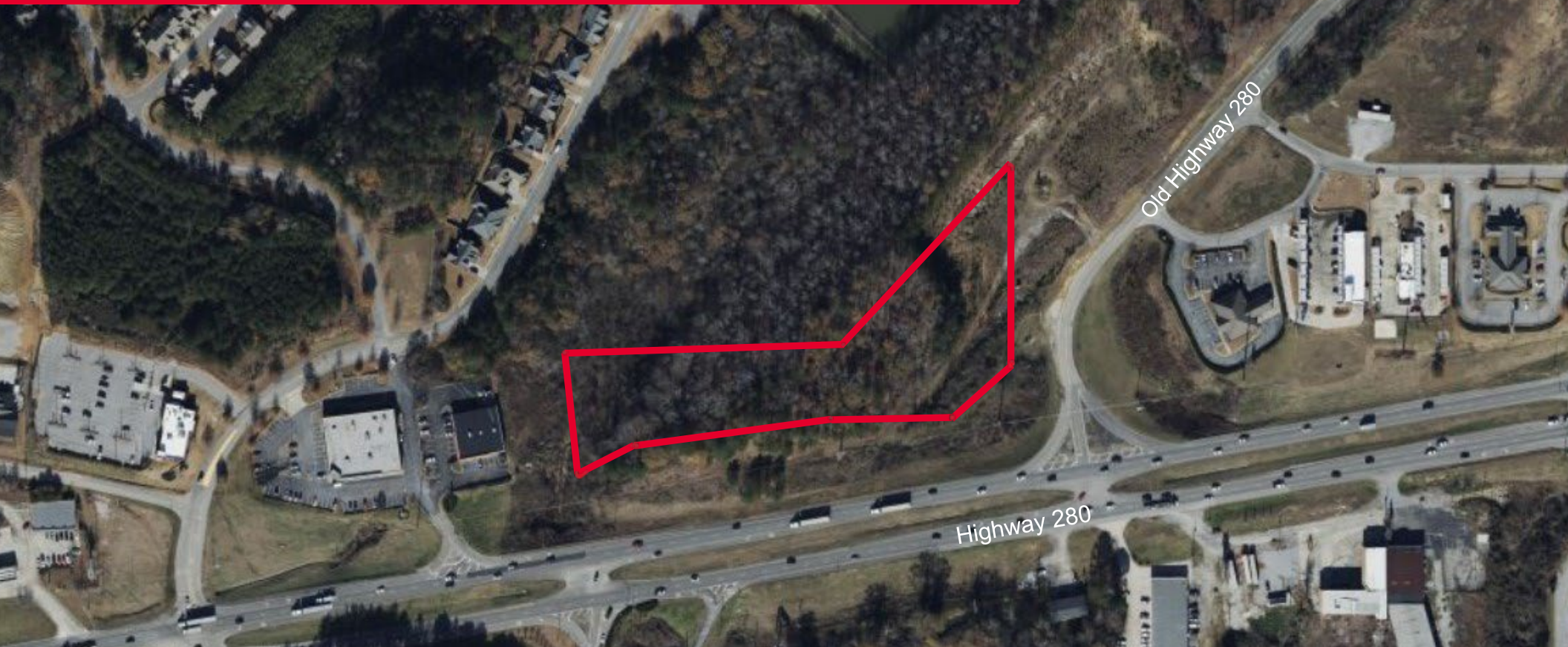




FOR SALE

Corner of Hwy 280 & Old Hwy 280
Chelsea, AL



±4.43 Acres Available

Excellent Frontage on US Hwy 280 • Sale Price: \$800,000

For more information, please contact:

JAKE BYERS

Leasing & Brokerage
+1 205 314 5555
jbyers@egsinc.com

2100 3rd Avenue North, Suite 700
Birmingham, AL 35203
phone: +1 205 939 4440
egsinc.com

Scan Here



AREA DETAILS

PROPERTY FEATURES

- Estimated 700+ new homes built in Chelsea by 2026
- Utilities available
- Zoning: Shelby County HZ
- Hilly terrain



Independently Owned and Operated / A Member of the Cushman & Wakefield Alliance

Cushman & Wakefield Copyright 2024. No warranty or representation, express or implied, is made to the accuracy or completeness of the information contained herein, and same is submitted subject to errors, omissions, change of price, rental or other conditions, withdrawal without notice, and to any special listing conditions imposed by the property owner(s). As applicable, we make no representation as to the condition of the property (or properties) in question.