



5001 MAYFIELD RD, LYNDHURST, OH 44124



**FOR MORE INFO: 440.752.8624**

**Hanna Trolli** | [htrolli@passovgroup.com](mailto:htrolli@passovgroup.com)



**PASSOV GROUP**  
COMMERCIAL BROKERAGE

# JEFFERSON CENTRE

## PROPERTY HIGHLIGHTS

### OFFERING HIGHLIGHTS

- Aggressive leasing opportunity
- Ample parking

- Flexible office suites from 364-2,546 SF
- Close to amenities & freeways

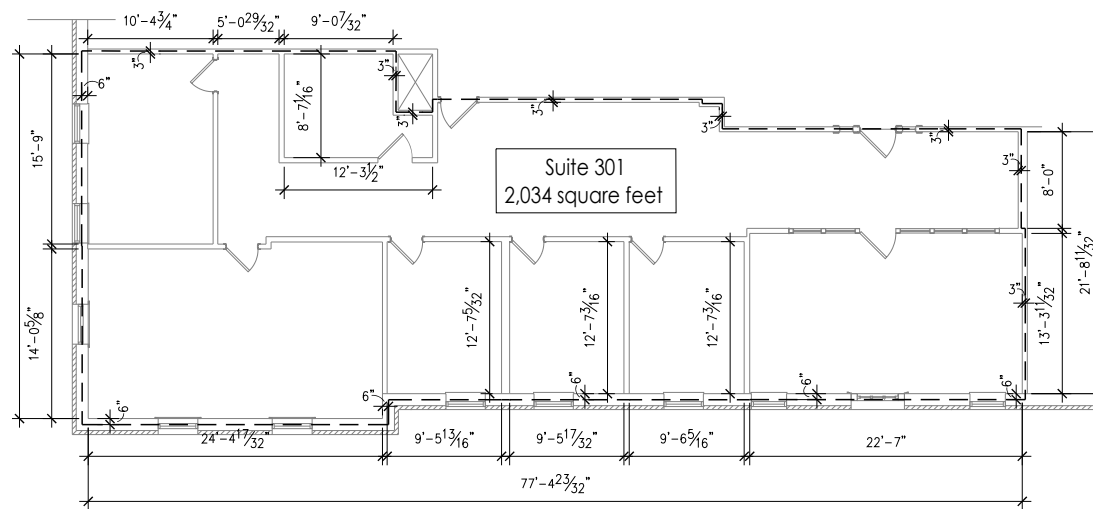
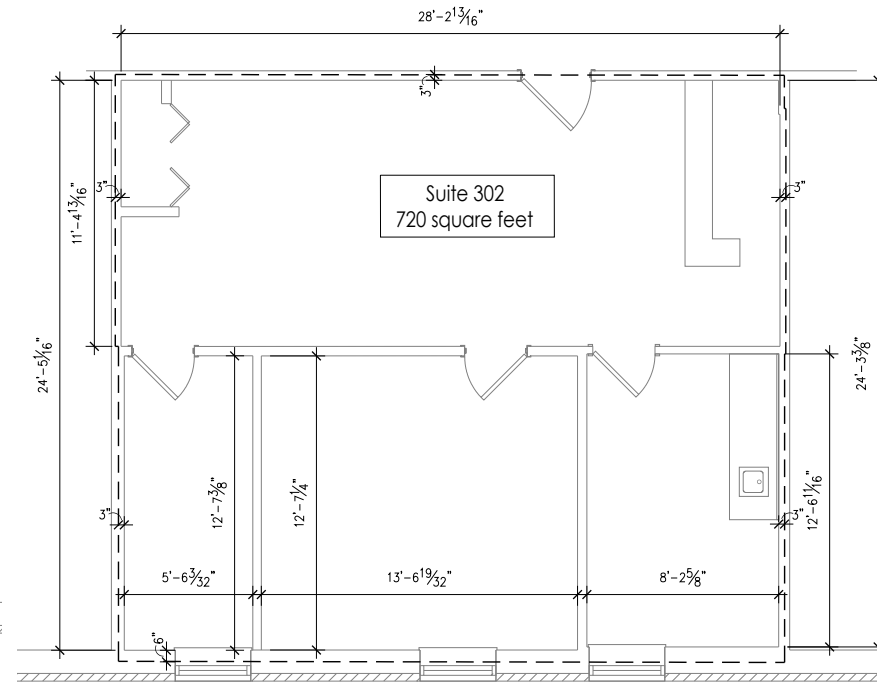
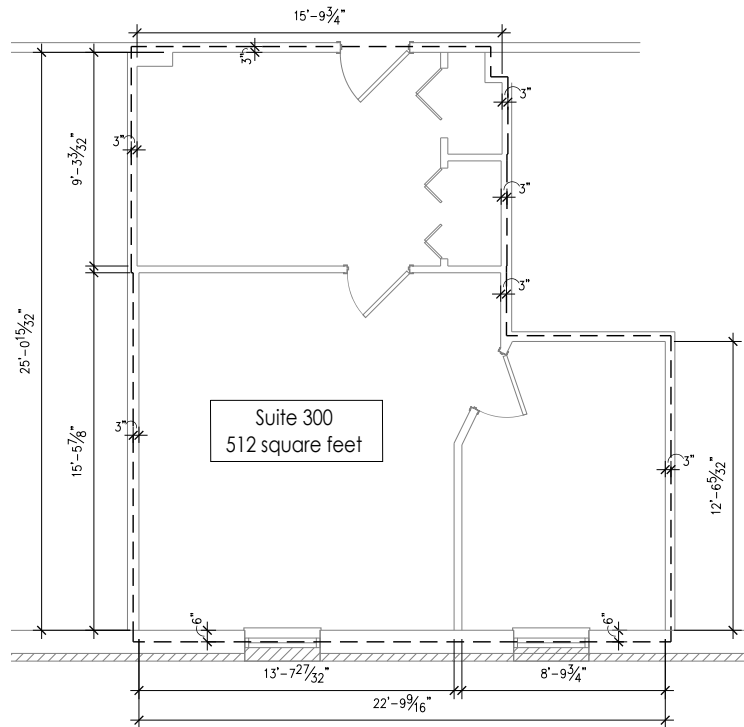
### AVAILABILITY

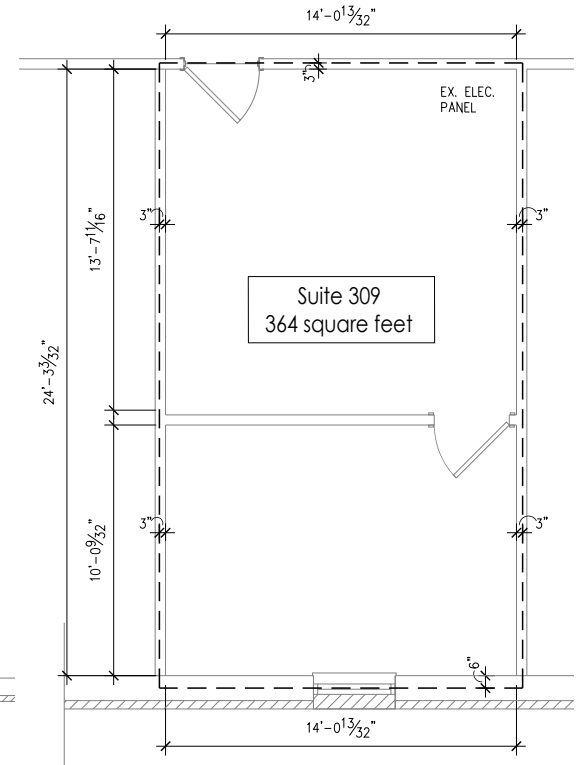
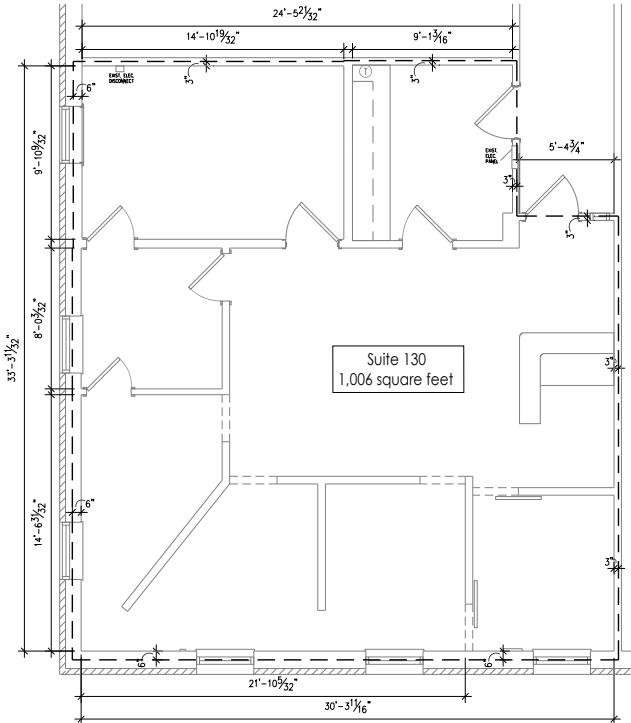
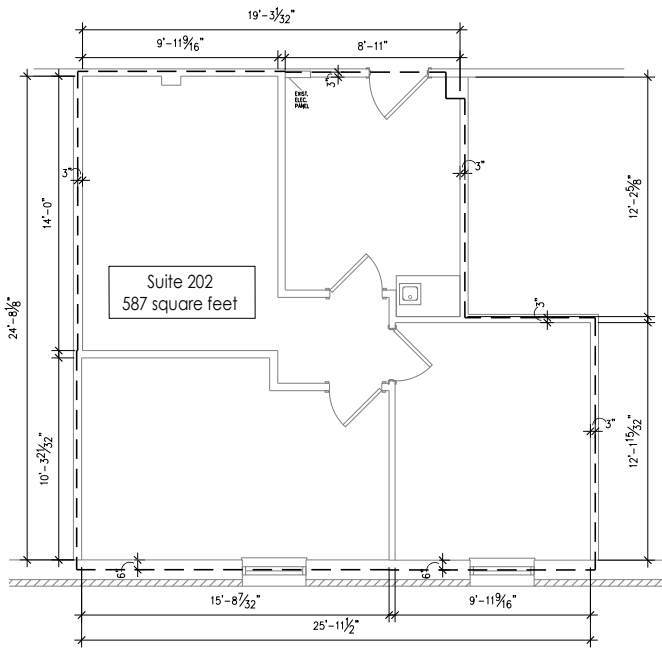
	UNIT	SQUARE FEET
1	130	1,006
2	202	587
3	300	512
4	301	2,034
5	302	720
6	309	364

### DEMOGRAPHICS

POPULATION	1 MILE	3 MILE	5 MILE
2023 Estimate	10,040	101,644	222,961
BUSINESS	1 MILE	3 MILE	5 MILE
2023 Estimated Total Businesses	460	3,942	10,839
2023 Estimated Total Employees	3,553	48,309	132,437
INCOME	1 MILE	3 MILE	5 MILE
2023 Estimated Average Household Income	\$120,833	\$117,726	\$117,842
2023 Estimated Median Household Income	\$83,641	\$83,729	\$82,018

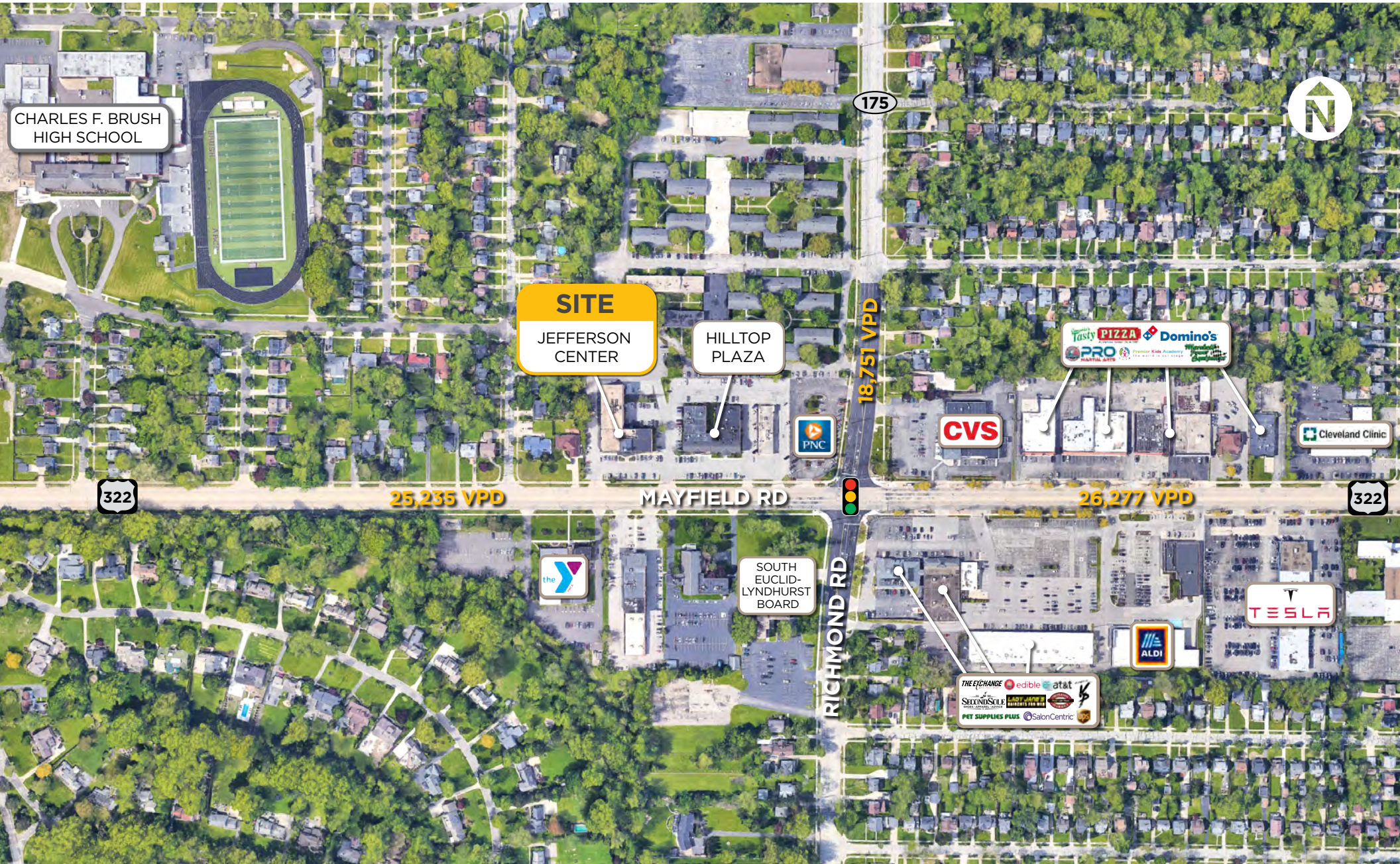






# JEFFERSON CENTRE

TRADE AERIAL



For more Information: 440.752.8624 | Hanna Trolli / htrolli@passovgroup.com

# JEFFERSON CENTRE

## LOCATION OVERVIEW



Lyndhurst, Ohio, is a dynamic city located in Cuyahoga County, just east of Cleveland. Known for its suburban charm, strong community values, and convenient location, Lyndhurst offers several opportunities for commercial real estate investors and businesses. The city's diverse economy, supportive business environment, and access to major transportation routes make it an attractive destination for commercial ventures.

One notable opportunity for commercial real estate in Lyndhurst is its thriving retail sector. The city is home to several commercial districts, including Legacy Village and Cedar Road, which offer a vibrant shopping and dining experience. These areas attract a diverse customer base, both from within the city and surrounding communities. With a strong retail

market and a reputation for providing exceptional customer service, Lyndhurst presents an ideal environment for businesses in the retail, hospitality, and service industries to establish a presence and thrive.

Lyndhurst offers excellent potential for office spaces and professional services. The city's central location and proximity to major highways, including Interstate 271, make it a convenient hub for businesses. Lyndhurst's well-maintained office complexes and business parks provide modern amenities and convenient access to amenities such as dining and retail establishments. This combination of convenience and quality makes Lyndhurst an attractive destination for professional services, technology companies, and corporate headquarters.

