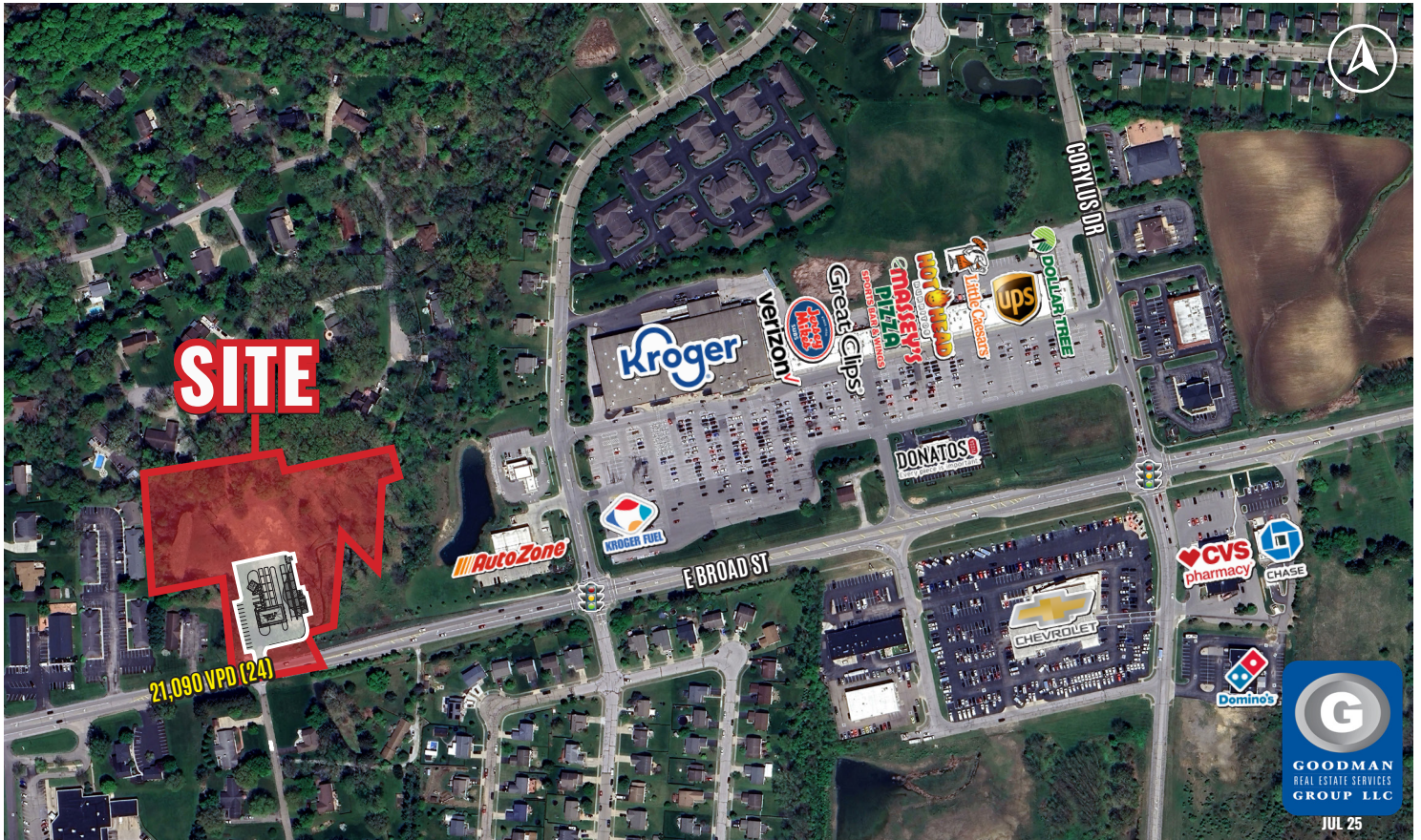




WWW.GOODMANREALESTATE.COM
216.381.8200

PATASKALA CROSSING

Pataskala, Ohio



HIGHLIGHTS

- **AVAILABLE:** Approximately 3.5 AC available for development
- Site shadow anchored by Kroger and situated along East Broad Street, which has over 21,000 vehicles per day
- The city of Pataskala sits 19 miles east of Columbus
- Pataskala's population has increased 4.04% since 2020, with an annual growth rate of 0.78% per year
- This area is expected to see major economic growth in upcoming years with pending residential and manufacturing developments

DEMOGRAPHICS

POPULATION	3 MILE	5 MILE	7 MILE
2030 Projection	18,399	37,576	89,899
2025 Estimate	17,188	35,093	84,158
INCOME	3 MILE	5 MILE	7 MILE
2025 Average	\$107,535	\$113,887	\$126,191
2025 Median	\$93,453	\$99,718	\$101,414
DAYTIME POPULATION	3 MILE	5 MILE	7 MILE
2025 Employees	5,785	11,470	17,580

LEASING INFORMATION

www.goodmanrealestate.com
216.381.8200

CLEVELAND

THE OFFICES OF LEGACY VILLAGE
25333 CEDAR ROAD, SUITE 305
CLEVELAND, OH 44124

COLUMBUS

100 W OLD WILSON BRIDGE ROAD,
SUITE 207
WORTHINGTON, OH 43085

DANIEL CLARK

EVP and Director of Columbus Office
daniel@goodmanrealestate.com

JOE BELINSKE

Sales Associate, Columbus Office
joe@goodmanrealestate.com



LEASING INFORMATION

www.goodmanrealestate.com

216.381.8200

DANIEL CLARK

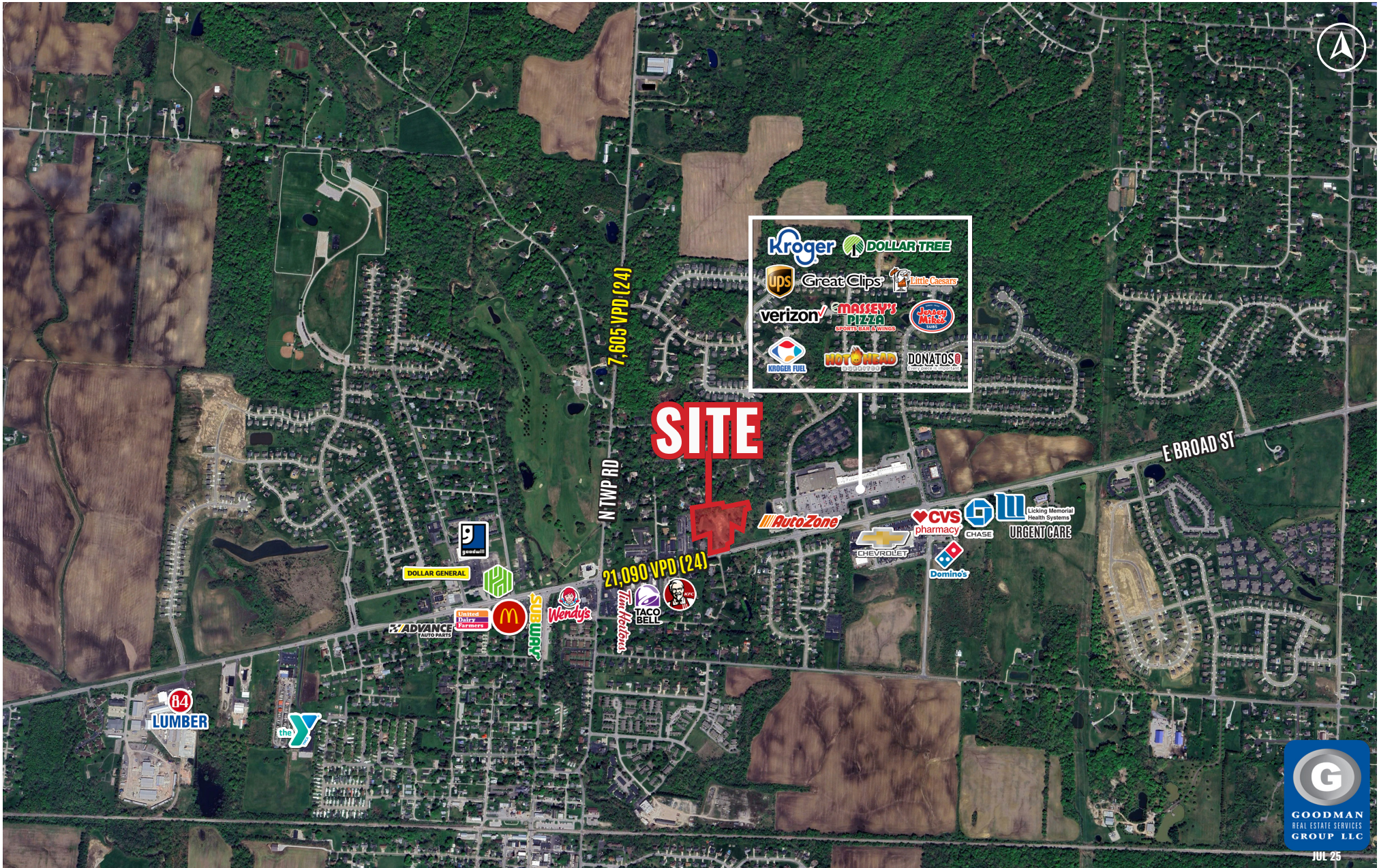
EVP and Director of Columbus Office
daniel@goodmanrealestate.com

JOE BELINSKE

Sales Associate, Columbus Office
joe@goodmanrealestate.com

PATASKALA CROSSING

Pataskala, Ohio



JUL 25

THE INFORMATION ABOVE HAS BEEN OBTAINED FROM SOURCES BELIEVED TO BE RELIABLE. GOODMAN REAL ESTATE SERVICES GROUP LLC AND ITS AGENTS, ASSOCIATES, AND EMPLOYEES MAKE NO GUARANTEE, WARRANTY OR REPRESENTATION ABOUT IT. ALL IMAGES CONTAINED HEREIN ARE THE PROPERTY OF GOODMAN REAL ESTATE SERVICES GROUP LLC AND SHALL NOT BE DUPLICATED OR REPRODUCED WITHOUT EXPRESS WRITTEN CONSENT OF GOODMAN REAL ESTATE SERVICES GROUP LLC. YOU ACKNOWLEDGE THAT, AS REQUIRED BY THE STATE OF OHIO, YOU HAVE RECEIVED THE CONSUMER GUIDE TO AGENCY RELATIONSHIPS.