

# HANNOVER INDUSTRIAL PARK

4755-4811 Hannover Place | Fremont | CA

**4811** Hannover Place  
±20,992 SF

**4755** Hannover Place  
±11,520 SF

**4775** Hannover Place  
±10,894 SF



**CBRE**

# PROPERTY HIGHLIGHTS



19'6" - 22'  
clear height



Sprinklered



Great proximity  
to I-880



Shopping and  
dining nearby



Market Ready  
Renovations  
Underway



## 4811 Hannover Place

- Available now
- ±20,992 SF'
- 1,979 SF office
- 19,013 SF warehouse
- I-880 frontage and signage
- 20'6" - 23'6" clear height
- Three dock doors with two dock levelers
- One grade-level door (with additional glassed-in grade)
- Breakroom
- Restrooms with shower
- Potential side yard
- Ample parking
- Power: 1,200 amps @ 120/208 3-phase

## 4755 Hannover Place

- Available now
- ±11,520 SF
- 2,552 SF office
- 8,968 SF clear span warehouse
- 3 private offices
- Open office area
- One dock-high door with dock leveler
- One grade-level door
- Power: 400 amps @ 120/208v, 3-phase
- 22' clear height



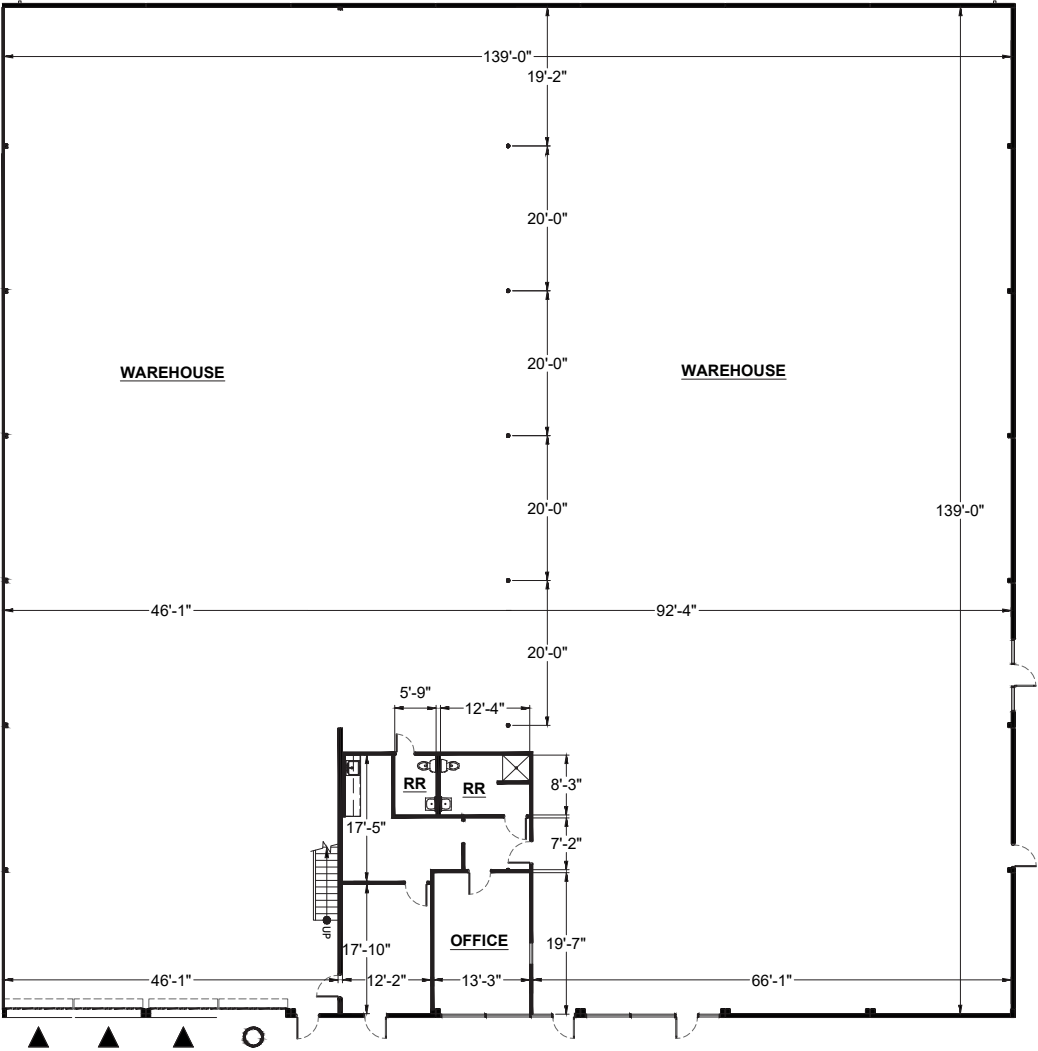
## 4775 Hannover Place

- Available now
- ±10,894 SF
- 2,176 SF office
- 8,718 SF clear span warehouse
- Market-ready renovations complete including new lighting, new flooring and new paint
- 5 private offices
- 2 conference rooms
- One dock-high door with dock leveler
- Two grade-level doors
- 5,000 SF paved and secured side yard
- Power: 600 amps @ 120/208v, 3-phase
- 22' clear height



# FLOOR PLAN

4811 Hannover Place  
±20,992 SF



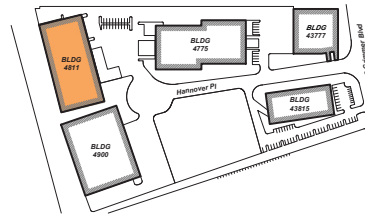
## SUITE DATA:

OFFICE	1,979 SF
WAREHOUSE	19,013 SF
<b>TOTAL</b>	<b>20,992 SF</b>

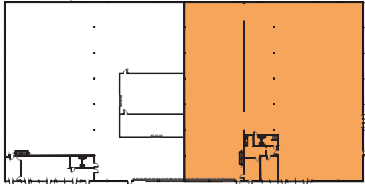
CLEAR HEIGHT 20'-6" - 23'-6"

GRADE LEVEL DOORS	1
DOCK HIGH DOORS	3

## SITE KEY PLAN:

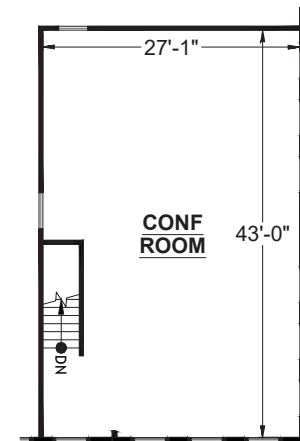
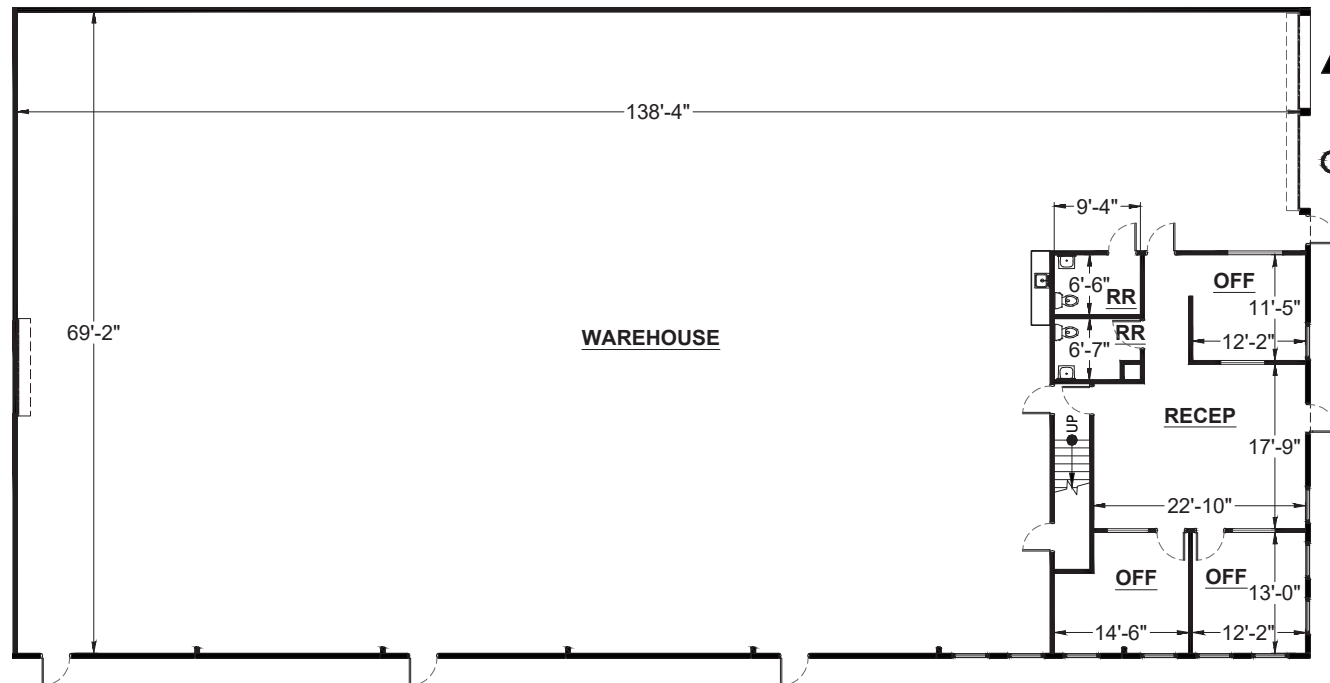


## BUILDING KEY PLAN:



# FLOOR PLAN

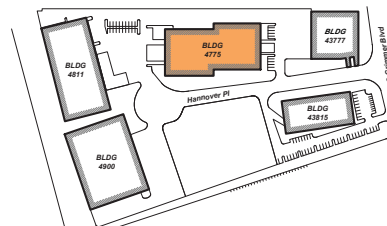
**4755 Hannover Place**  
±11,520 SF



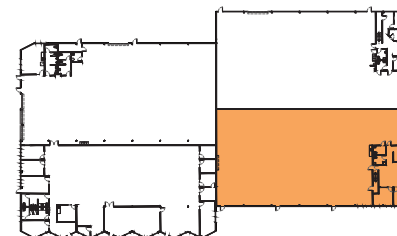
## SUITE DATA:

OFFICE	2,552 SF
WAREHOUSE	8,968 SF
<b>TOTAL</b>	<b>11,520 SF</b>
CLEAR HEIGHT	19'-6" - 22'-0"
⊙ GRADE LEVEL DOORS	1
▲ DOCK HIGH DOORS	1

## SITE KEY PLAN:

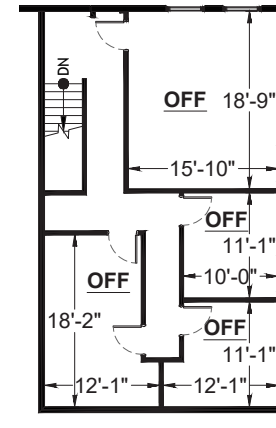
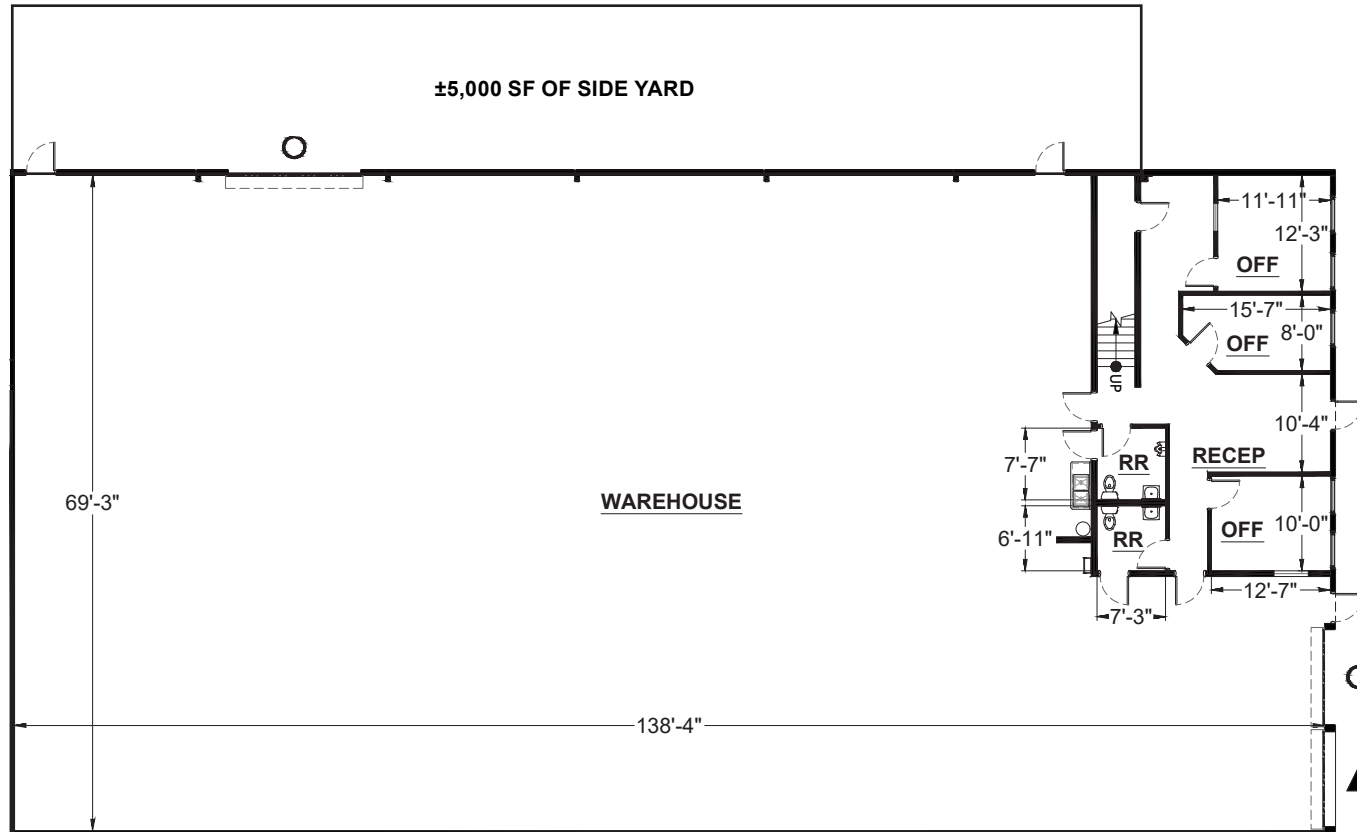


## BUILDING KEY PLAN:



# FLOOR PLAN

**4775 Hannover Place**  
±10,894 SF

**SUITE DATA:**

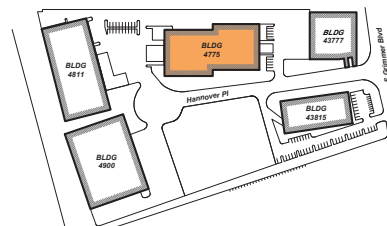
OFFICE	2,176 SF
WAREHOUSE	8,718 SF
<b>TOTAL</b>	<b>10,894 SF</b>

CLEAR HEIGHT 19'-6" - 22'-0"

## GRADE LEVEL DOORS 2

▲ DOCK HIGH DOORS 1

SITE KEY PLAN:



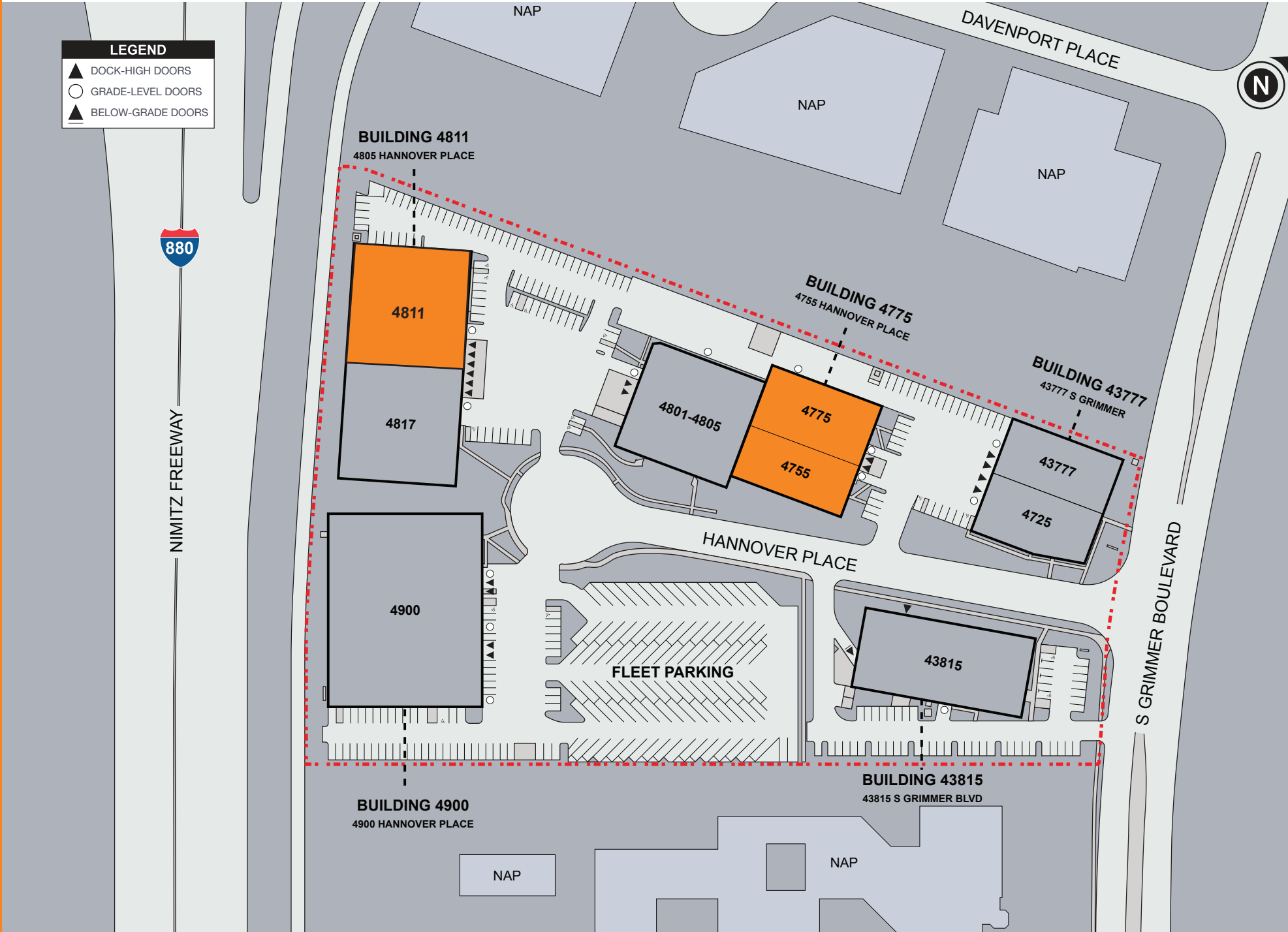
BUILDING KEY PLAN:



# SITE PLAN

AVAILABLE

LEASED



# HANNOVER INDUSTRIAL PARK

**4755-4811 Hannover Place**  
**Fremont | CA**

**4811 Hannover Place**  
±20,992 SF

**4755 Hannover Place**  
±11,520 SF

**4775 Hannover Place**  
±10,894 SF



**Brooks Baker**  
Senior Associate  
+1 510 874 1927  
brooks.baker@cbre.com  
Lic. 02000900

**Joey McSweeney**  
Vice President  
+1 408 467 7553  
joey.mcsweeney@cbre.com  
Lic. 02033713

**Matt Gutierrez**  
Senior Associate  
+1 408 467 7582  
matt.gutierrez@cbre.com  
Lic. 02065613



© 2025 CBRE, Inc. All rights reserved. This information has been obtained from sources believed reliable but has not been verified for accuracy or completeness. CBRE, Inc. makes no guarantee, representation or warranty and accepts no responsibility or liability as to the accuracy, completeness, or reliability of the information contained herein. You should conduct a careful, independent investigation of the property and verify all information. Any reliance on this information is solely at your own risk. CBRE and the CBRE logo are service marks of CBRE, Inc. All other marks displayed on this document are the property of their respective owners, and the use of such marks does not imply any affiliation with or endorsement of CBRE. Photos herein are the property of their respective owners. Use of these images without the express written consent of the owner is prohibited.