



WEST

1925
CENTURY
PARK EAST
SUITE 2050
CENTURY CITY



ZACUTO GROUP
COMMERCIAL REAL ESTATE

SUBLEASE DETAILS

1925 CENTURY PARK E., STE 2050
CENTURY CITY, CA 90067

RATE

\$3,000/mo.

TERM

Thru August, 2025

SIZE

650 SF

PARKING

TBD

- » Private office available within larger entertainment law practice
- » Accessibility to conference room, kitchen, printing station and formal reception
- » Open views of Century City & Beverly Hills
- » Receptionist available to field incoming calls and transfer

LISTING TEAM



JOHN LOGAN

Senior Director

310.469.9024

john@zacutogroup.com

BRE #02161147



SUBLEASE

1925 CENTURY PARK EAST, CENTURY CITY, 90069



SUBLEASE

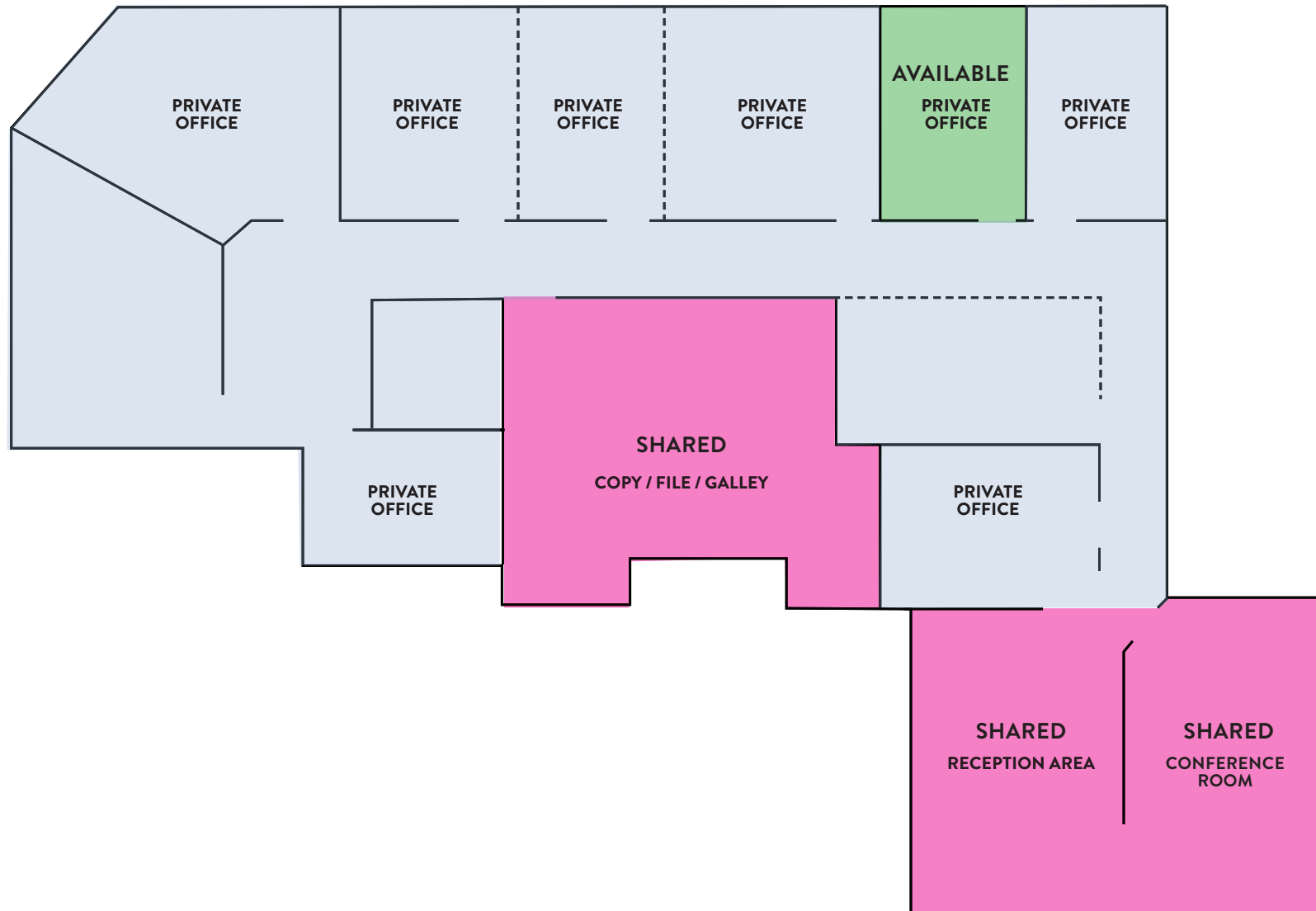
1925 CENTURY PARK EAST, CENTURY CITY, 90069



SUITE 2050

SUBLEASE

1925 CENTURY PARK EAST, CENTURY CITY, 90069





UCLA

1925
CENTURY
PARK EAST

CENTURY CITY MALL	
APPLE STORE	EQUINOX
NORDSTROM	AMC THEATRE
BLOOMINGDALE'S	J. CREW
TESLA	DIN TAI FUNG
LULULEMON	CONTAINER STORE
EATALY	BURBERRY
SEPHORA	VERSACE
TIFFANY & CO.	MICROSOFT STORE

CARTIER

GUCCI

TIFFANY & CO.

Burton Way
WALLY'S

NESPRESSO

LULULEMON

BEVERLY HILLS
GOLDEN TRIANGLE

AVRA

BEVERLY WILSHIRE HOTEL

CENTURY CITY

WALKING DISTANCE TO SOME OF THE BEST RESTAURANTS, RETAIL & AMENITIES IN THE CITY



📍 **EATALY - WESTFIELD CENTURY CITY**



📍 **BLUE BOTTLE - WESTFIELD CENTURY CITY**



📍 **FAIRMONT - CENTURY PLAZA**



📍 **CRAFT LOS ANGELES - 10100 CONSTELLATION**



📍 **LA COLOMBE - WESTFIELD CENTURY CITY**



📍 **NORDSTROM - WESTFIELD CENTURY CITY**

1925 CENTURY PARK EAST SUITE 2050 CENTURY CITY



ZACUTO GROUP
COMMERCIAL REAL ESTATE

JOHN LOGAN

Senior Director

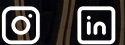
310.469.9024

john@zacutogroup.com

BRE #02161147



FIRST REPUBLIC



ZACUTOGROUP.COM | 310.469.9300

No warranty, express or implied, is made as to the accuracy of the information contained herein. This information is submitted subject to errors, omissions, change of price, rental or other conditions, withdrawal without notice. All parties who receive this material should not rely on it, but should use it as a starting point of analysis, and should independently confirm the accuracy of the information contained herein through a due diligence review of the books, records, files and documents that constitute reliable sources of the information described herein. Logos and images are for identification purposes only and may be trademarks of their respective companies. All terms provided are approximate. Leasee to verify. 4/2024