

Kissimmee Multi Specialty Clinic Building

Office Space for Lease



201 Hilda Street
Kissimmee, FL 34741

Property Details:

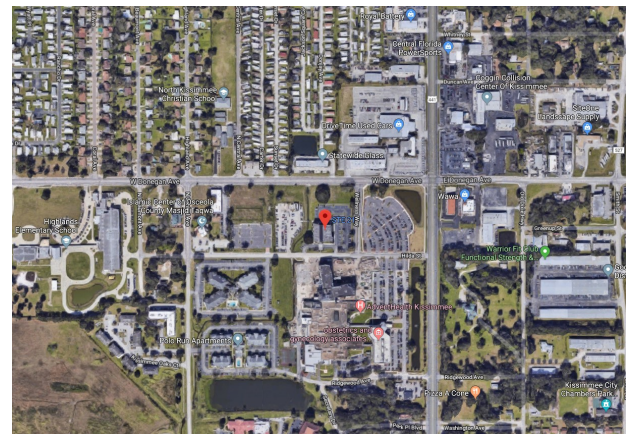
Total Space Available	1,260 RSF
Rental Rate	TBD
Min. Divisible	1,260 RSF
Max. Contiguous	1,260 RSF
Property Type	Office
Property Sub Type	Medical Office

Spaces:

Suite	Space Available	Min Divisible	Max Contiguous	Price	Date Available
23	1,260 RSF	1,260 RSF	1,260 RSF	TBD	Now

Features:

- Located in medical office complex adjacent to AdventHealth Kissimmee hospital campus
- On Highway 441 and minutes from Osceola Parkway, Hunters Creek and the Florida Turnpike
- Plenty of convenient parking



Commercial Sales & Leasing | Property Management | Project Development | Acquisitions & Dispositions | Construction Services

Southeastern Realty Group, Inc. - 933 Lee Road Suite 400 - Orlando, FL 32810 - t: 407-629-5595 - f: 407-645-2035

Site Overview:

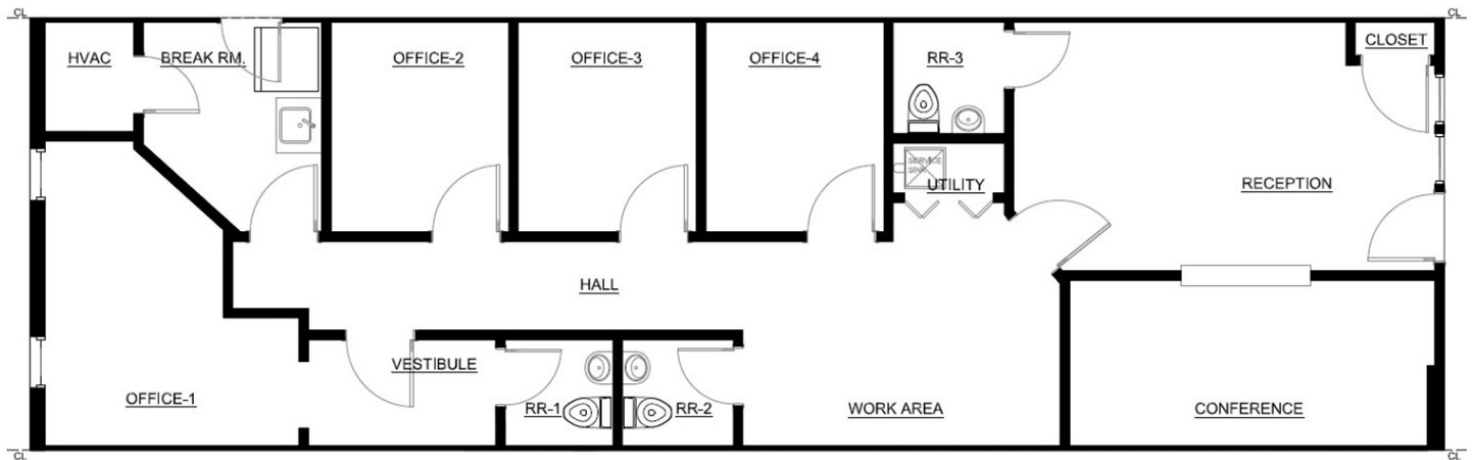


201 Hilda Street
Kissimmee, FL 34741

Commercial Sales & Leasing | Property Management | Project Development | Acquisitions & Dispositions | Construction Services
Southeastern Realty Group, Inc. - 933 Lee Road Suite 400 - Orlando, FL 32810 - t: 407-629-5595 - f: 407-645-2035

The information contained herein is from sources deemed reliable, but no warranty or representation is made as to the accuracy thereof and no liability may be imposed.

Floorplan:



201 Hilda Street, Suite 23
Kissimmee, FL 34741

1,260 RSF

Commercial Sales & Leasing | Property Management | Project Development | Acquisitions & Dispositions | Construction Services

Southeastern Realty Group, Inc. - 933 Lee Road Suite 400 - Orlando, FL 32810 - t: 407-629-5595 - f: 407-645-2035

The information contained herein is from sources deemed reliable, but no warranty or representation is made as to the accuracy thereof and no liability may be imposed.