

101 CONSTITUTION AVENUE, NW



Leasing Information:  
202.513.6700

**Merrill Turnbull**  
202.513.6713  
mturnbull@lpc.com

**Adam Biberaj**  
202.513.6736  
abiberaj@lpc.com

**Tim Whitebread**  
202.513.6712  
twhitebread@lpc.com

**Lincoln**

Lincoln Property Company  
101 Constitution Avenue, NW Suite 325 East  
Washington, DC 20001

[www.lpc.com](http://www.lpc.com)

# 101 CONSTITUTION AVE, NW



## Property Highlights

- \$50M+ renovation underway, expanding the rooftop terrace, lobby, two-story fitness center, and elevators for a modern, elevated experience
- New conference center facility (can accommodate 175 people)
- Move-in ready suite overlooking the Capitol
- Ample underground parking
- Fitness center & bike storage

## Availabilities

## SF

## Date Available

LL120	4,931 SF	1/2025
100W	6,592 SF	Immediately
220W	3,100 - 14,150 SF	Immediately
320W	10,861 SF	Immediately
320E	2,187 SF	Immediately
400E	17,568 SF	Immediately
700	25,000 - 54,784 SF	6/2025
850W	17,699 SF	2/2027
900	44,873 SF	2/2027

**Merrill Turnbull**

202.513.6713  
mturnbull@lpc.com

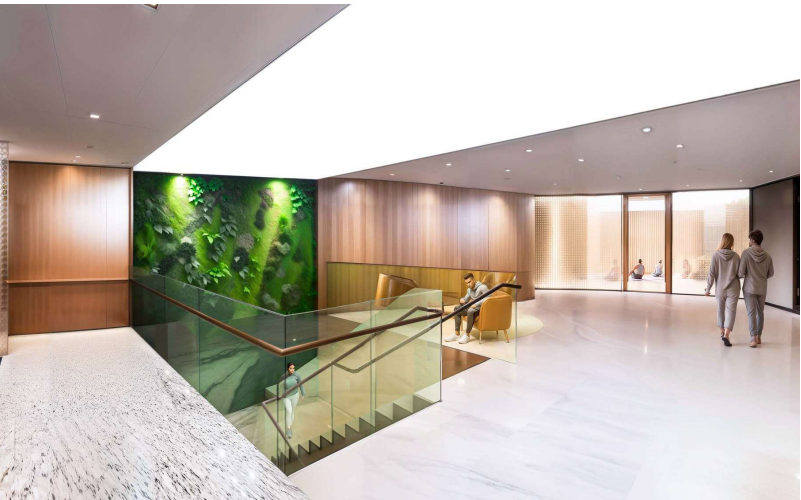
**Adam Biberaj**

202.513.6736  
abiberaj@lpc.com

**Tim Whitebread**

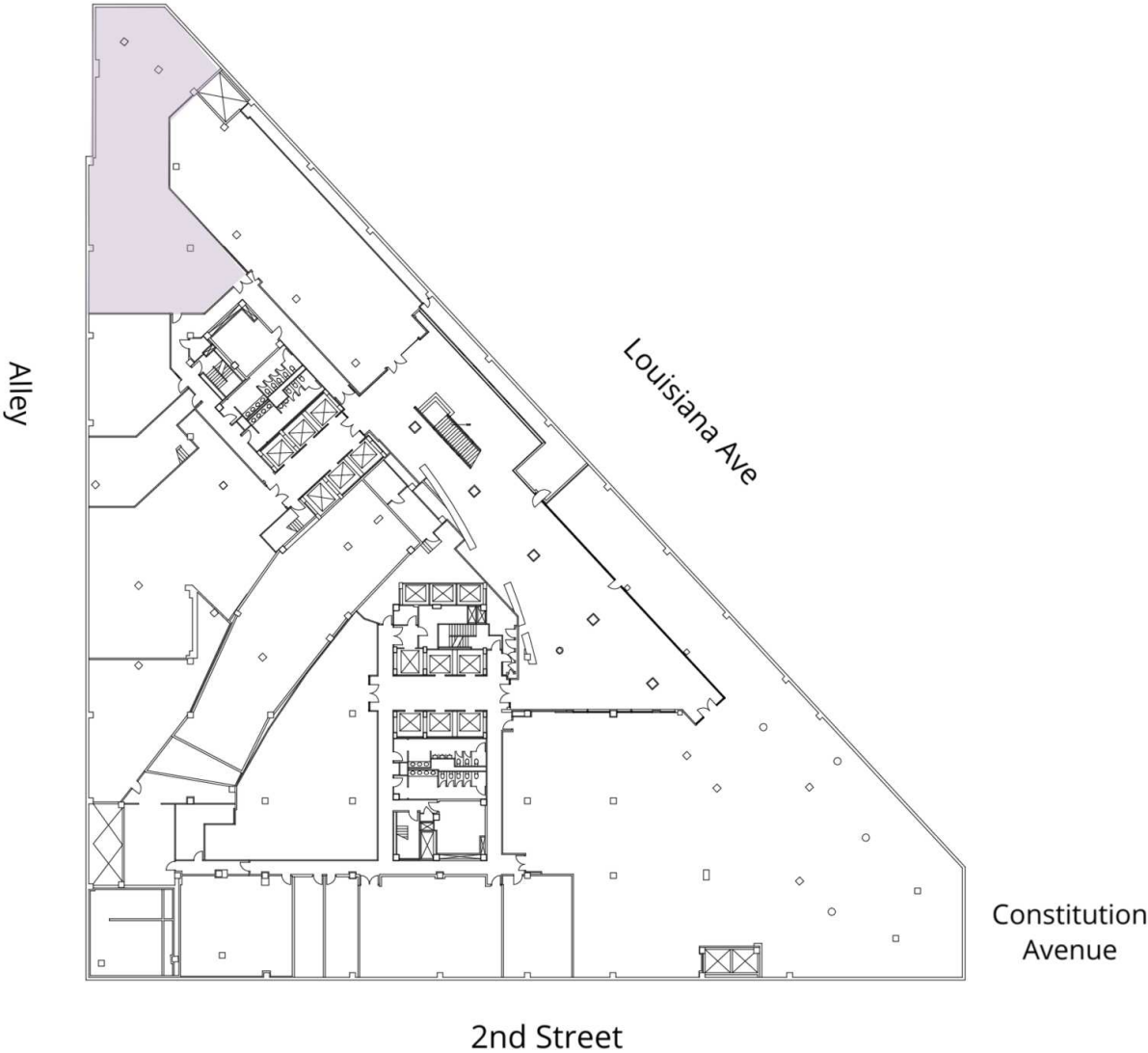
202.513.6712  
twhitebread@lpc.com

**Lincoln**



**Merrill Turnbull**   **Adam Biberaj**   **Tim Whitebread**  
 202.513.6713   202.513.6736   202.513.6712  
 mturnbull@lpc.com   abiberaj@lpc.com   twhitebread@lpc.com

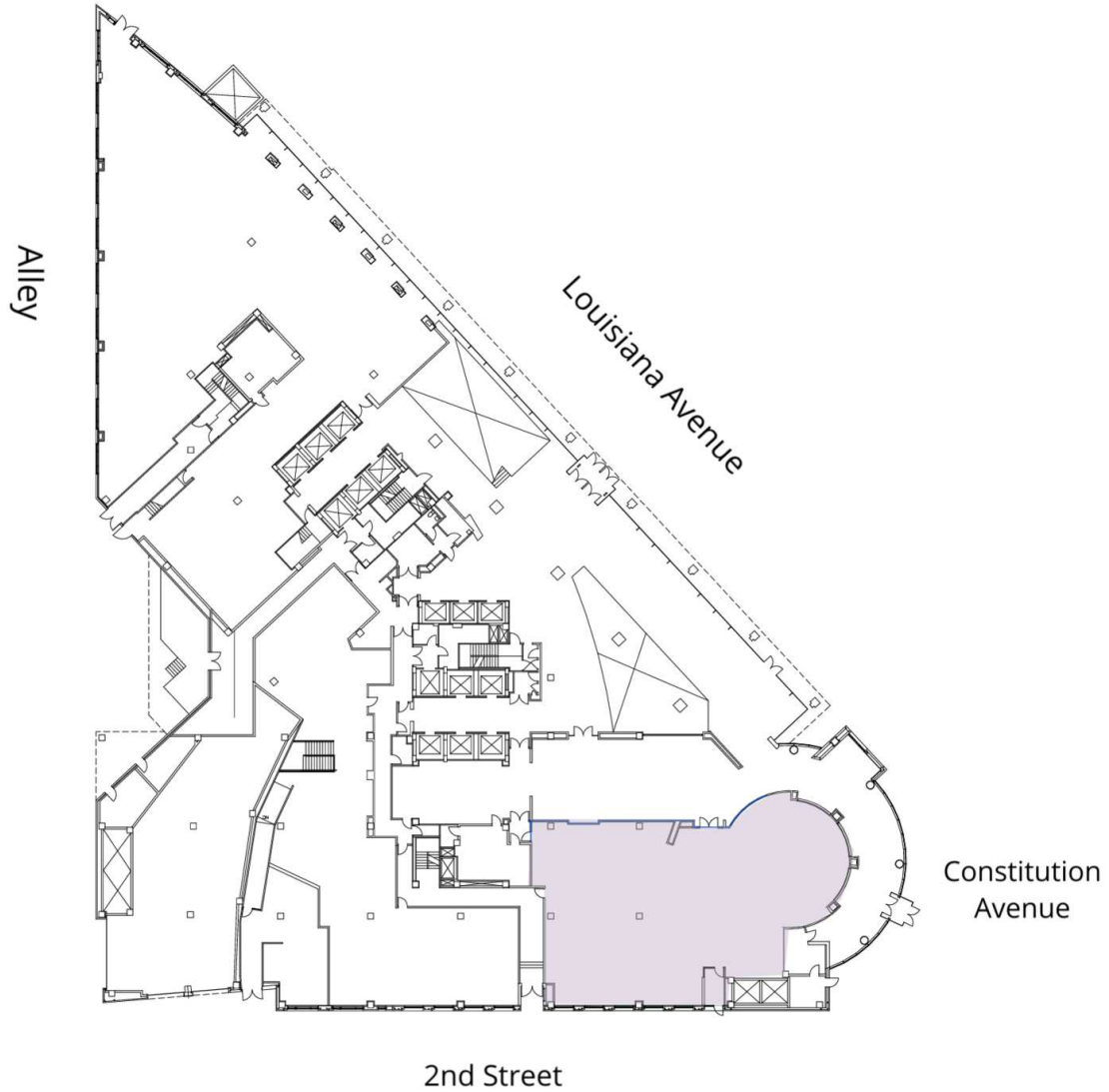
**Lincoln**



Suite	Size	Description
■ LL120	4,931 SF	Lower level available Q1 2025

**Merrill Turnbull**   **Adam Biberaj**   **Tim Whitebread**  
202.513.6713   202.513.6736   202.513.6712  
mturnbull@lpc.com   abiberaj@lpc.com   twhitebread@lpc.com

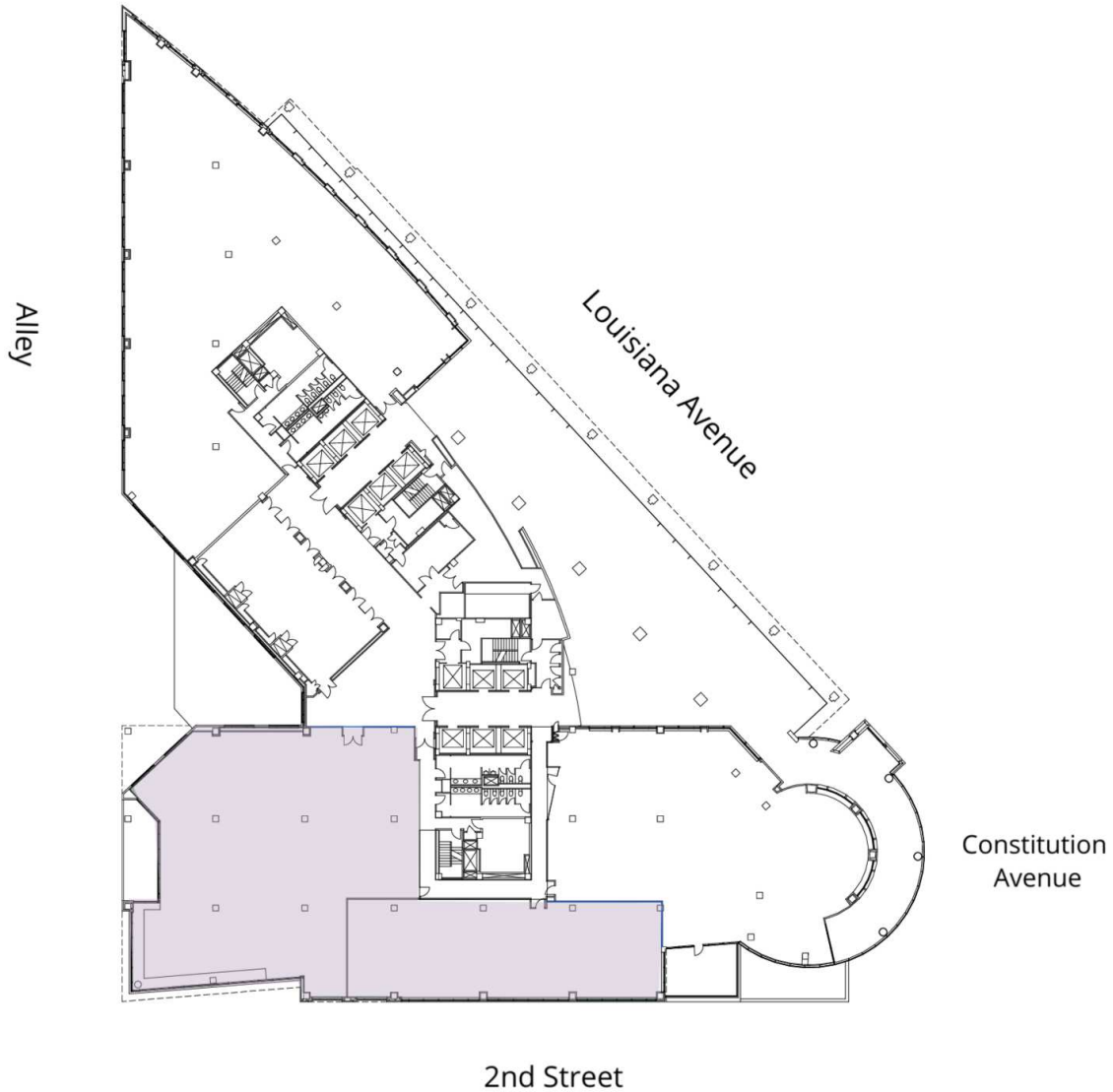




Suite	Size	Description
■ 100W	6,592 SF	Available immediately

**Merrill Turnbull**   **Adam Biberaj**   **Tim Whitebread**  
202.513.6713   202.513.6736   202.513.6712  
mturnbull@lpc.com   abiberaj@lpc.com   twhitebread@lpc.com

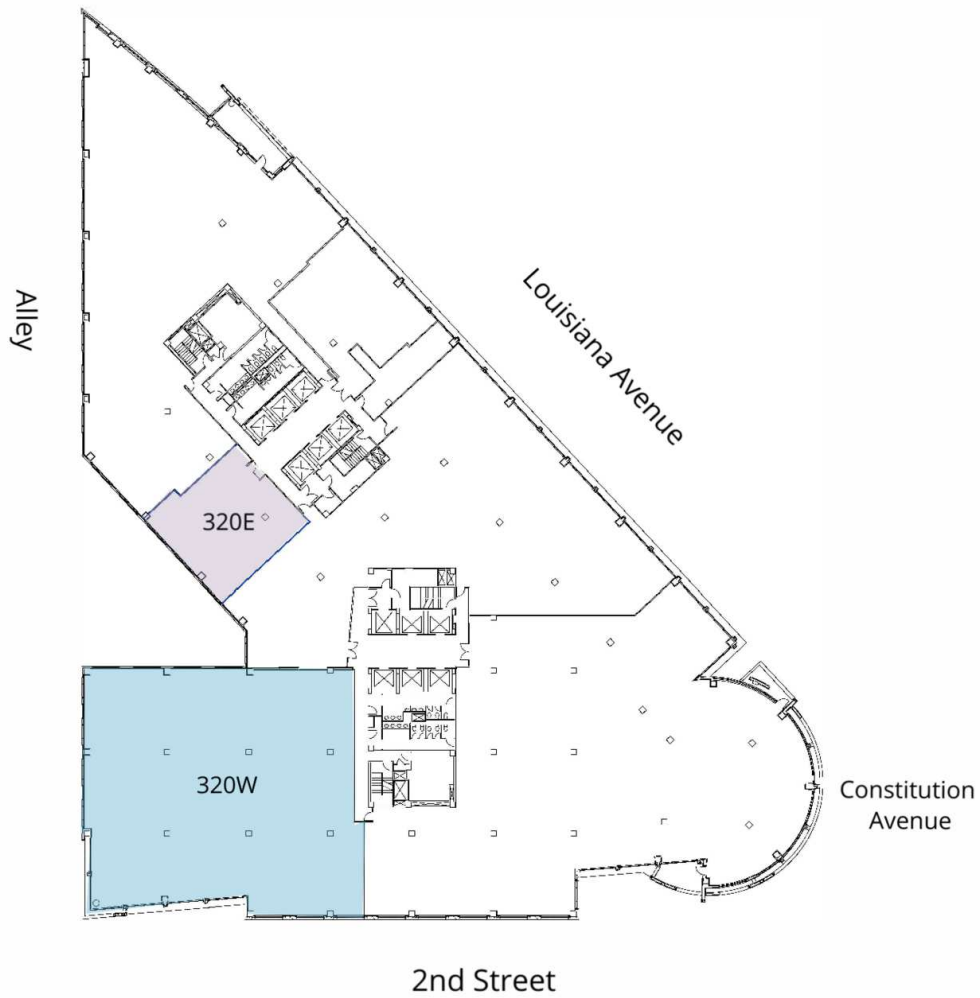
**Lincoln**



Suite	Size	Description
■ 220W	3,100 - 14,150 SF	Spec suites soon to begin construction with mid-2025 delivery date. Adjacent to building conference facility

**Merrill Turnbull**   **Adam Biberaj**   **Tim Whitebread**  
 202.513.6713   202.513.6736   202.513.6712  
 mturnbull@lpc.com   abiberaj@lpc.com   twhitebread@lpc.com

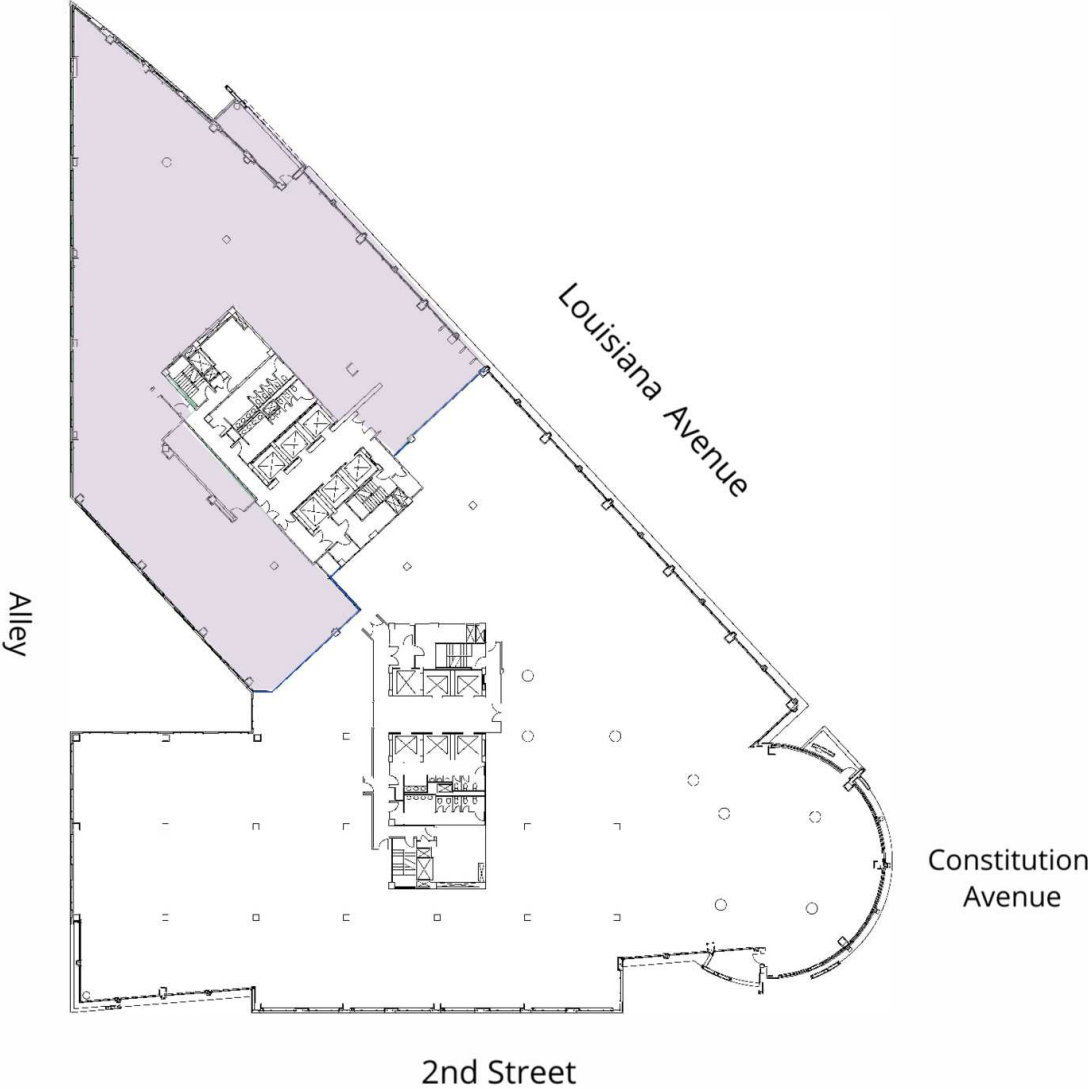
**Lincoln**



Suite	Size	Description
■ 320W	10,861 SF	Available Immediately
■ 320E	2,187 SF	Shell condition, available immediately.

**Merrill Turnbull**    **Adam Biberaj**    **Tim Whitebread**  
 202.513.6713            202.513.6736            202.513.6712  
 mturnbull@lpc.com    abiberaj@lpc.com      twhitebread@lpc.com

**Lincoln**

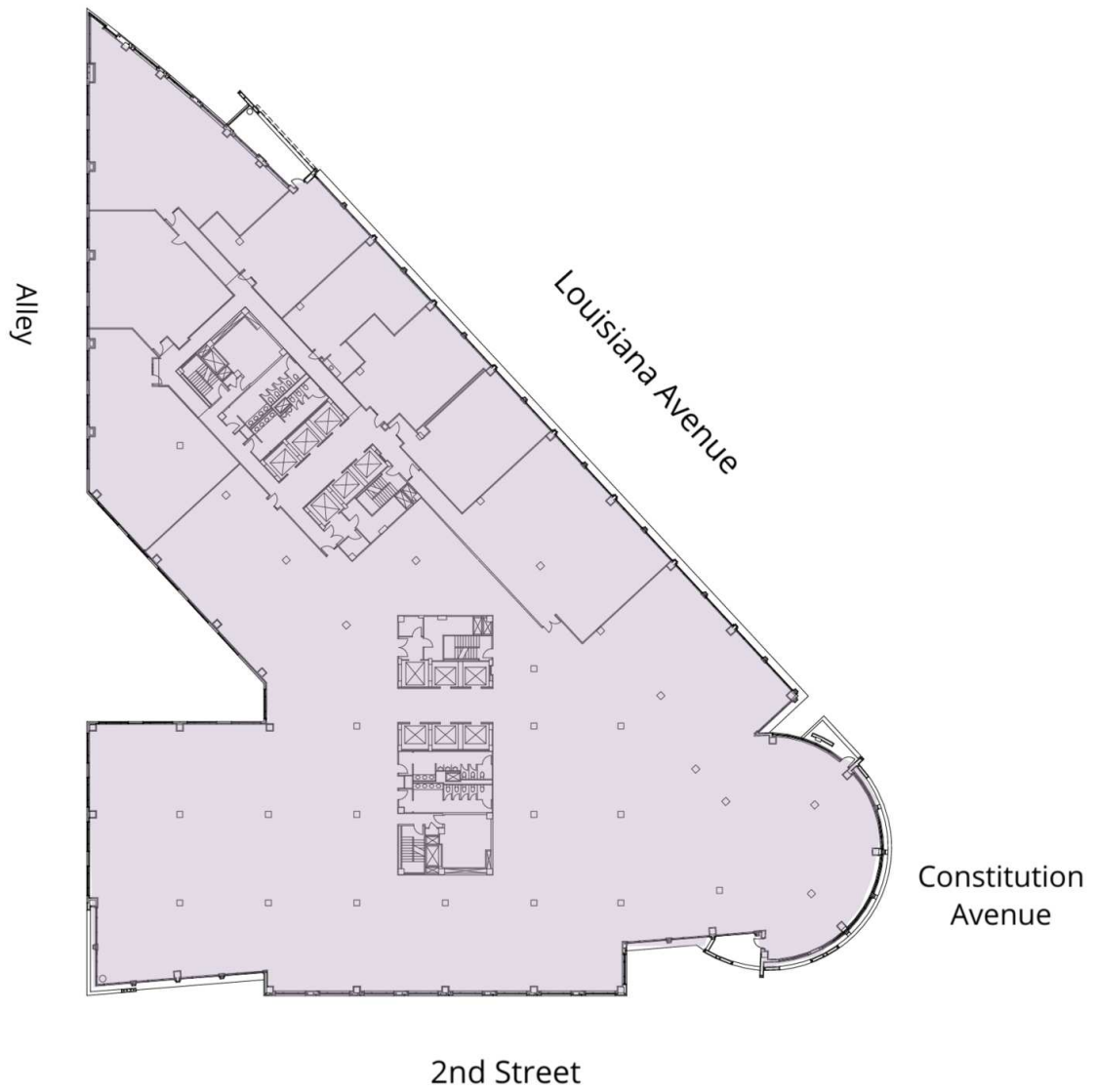


Suite	Size	Description
■ 400E	17,568 SF	Available Immediately

**Merrill Turnbull**   **Adam Biberaj**   **Tim Whitebread**  
202.513.6713   202.513.6736   202.513.6712  
mturnbull@lpc.com   abiberaj@lpc.com   twhitebread@lpc.com



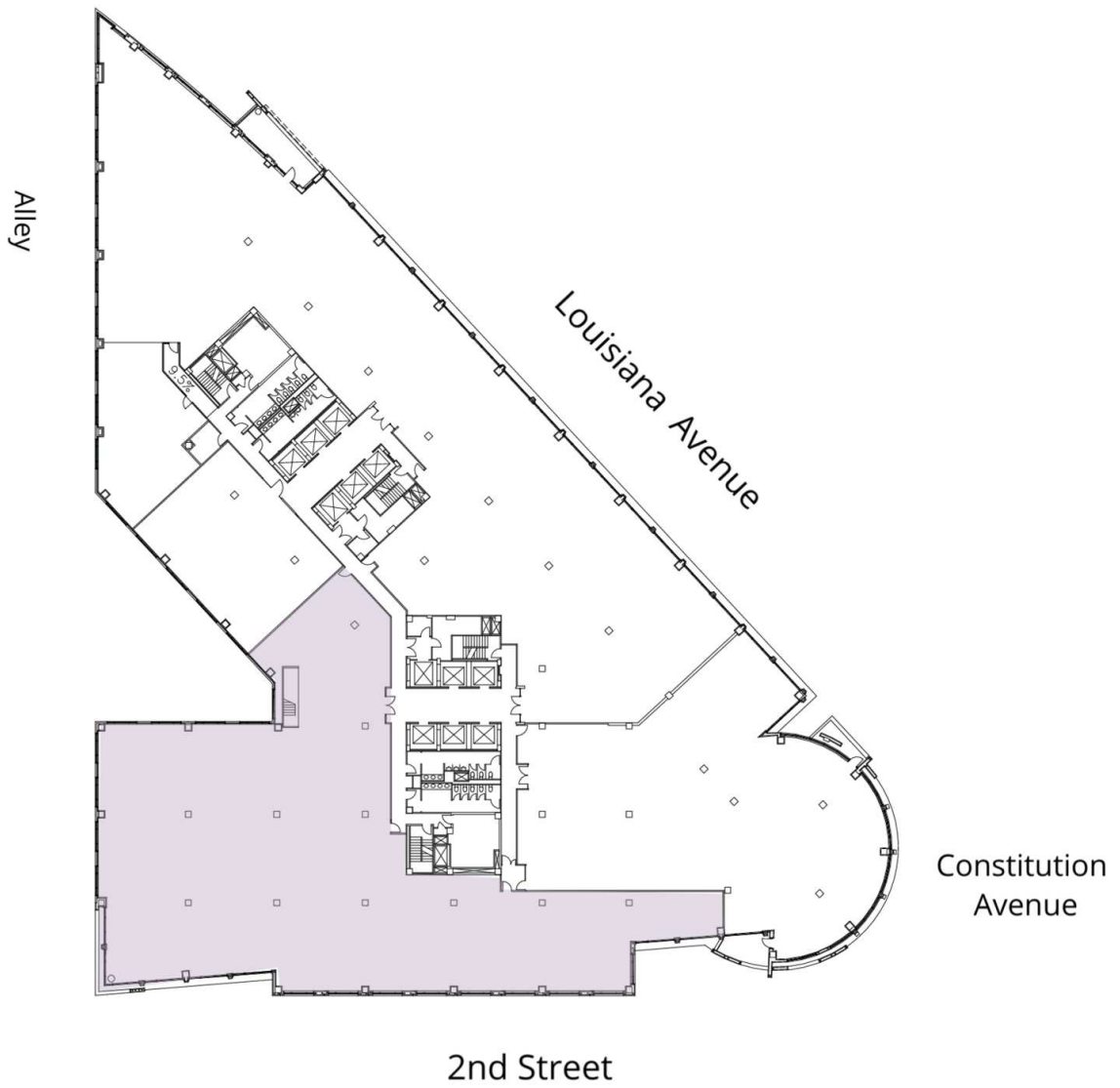




Suite	Size	Description
700	25,000 - 54,784 SF	Opportunity to lease upper floor space with multiple private terraces and best views of the Capitol!

**Merrill Turnbull**   **Adam Biberaj**   **Tim Whitebread**  
202.513.6713   202.513.6736   202.513.6712  
mturnbull@lpc.com   abiberaj@lpc.com   twhitebread@lpc.com

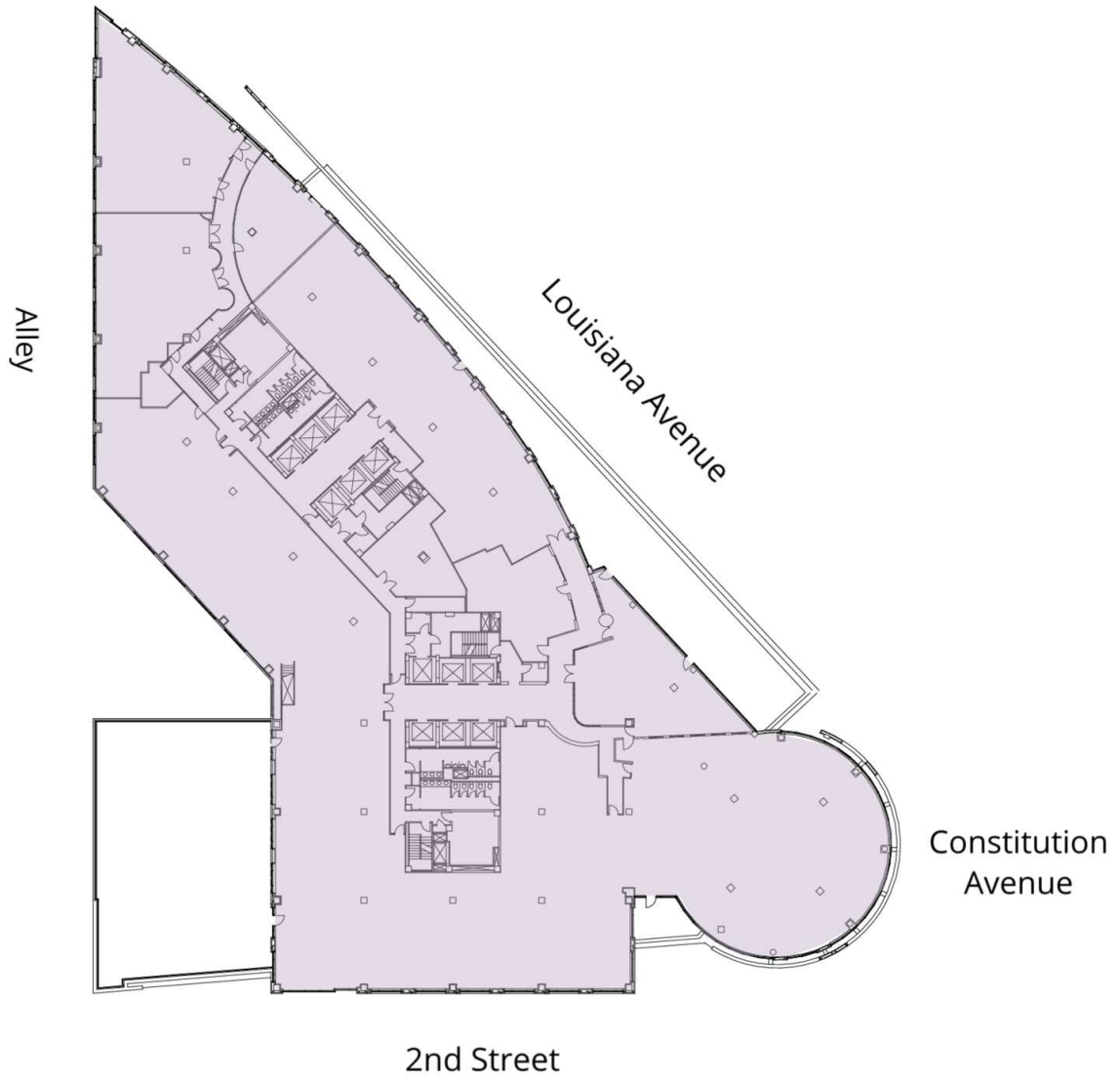
**Lincoln**



Suite	Size	Description
■ 850W	17,699 SF	Available on 2/2027

**Merrill Turnbull**   **Adam Biberaj**   **Tim Whitebread**  
202.513.6713   202.513.6736   202.513.6712  
mturnbull@lpc.com   abiberaj@lpc.com   twhitebread@lpc.com

**Lincoln**



Suite	Size	Description
■ 900	44,873 SF	Multiple and expansive private balconies including a large, Capitol facing terrace. Available 2/2027.

**Merrill Turnbull**   **Adam Biberaj**   **Tim Whitebread**  
202.513.6713   202.513.6736   202.513.6712  
mturnbull@lpc.com   abiberaj@lpc.com   twhitebread@lpc.com

**Lincoln**



# 101 CONSTITUTION AVENUE, NW

Leasing Information:  
202.513.6700

**Merrill Turnbull**  
202.513.6713  
mturnbull@lpc.com

**Adam Biberaj**  
202.513.6736  
abiberaj@lpc.com

**Tim Whitebread**  
202.513.6712  
twhitebread@lpc.com

## Lincoln

Lincoln Property Company  
101 Constitution Avenue, NW Suite 325 East  
Washington, DC 20001

[www.lpc.com](http://www.lpc.com)