

15755 WYOMING AVENUE
DETROIT, MICHIGAN



**SIGNATURE
ASSOCIATES**
KNOW SIGNATURE | KNOW RESULTS

RETAIL FOR SALE OR LEASE
3,054 Square Feet Available



PROPERTY FEATURES

- 3,054 square feet available
- Fully licensed day care for up to 40 kids
- 14' clear height
- Zoned B2
- Lease Rate: \$2,000/month + utilities
- Sale Price: \$175,000 (\$57.30/sq. ft.)



For more information, please contact:

JOE STACK
(248) 359 0615
jstack@signatureassociates.com

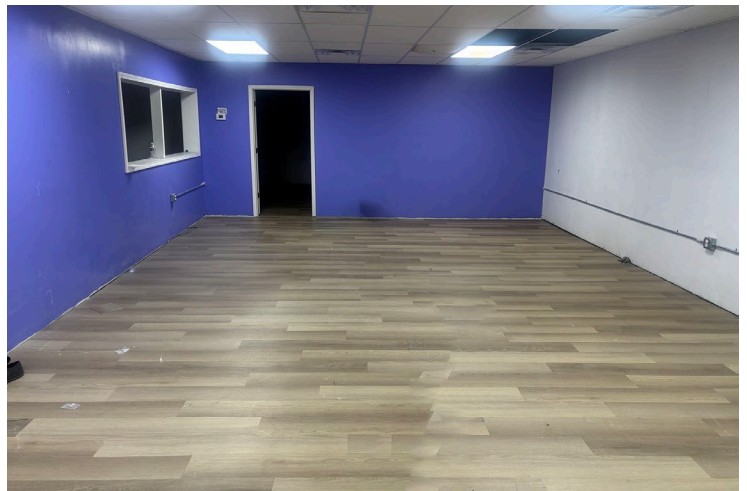
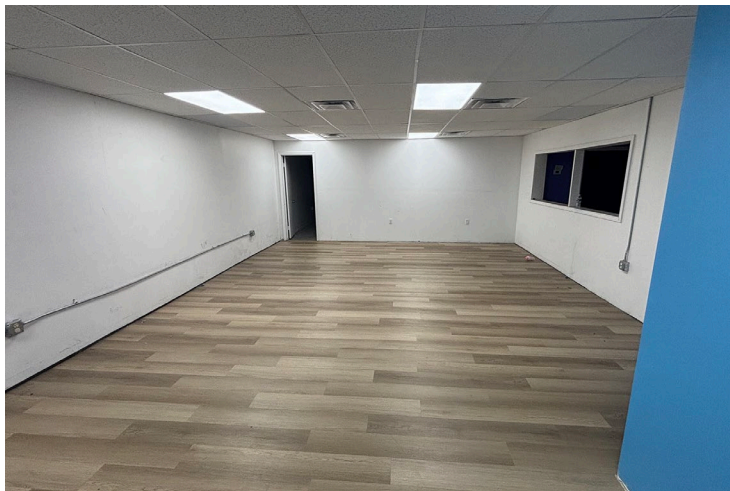
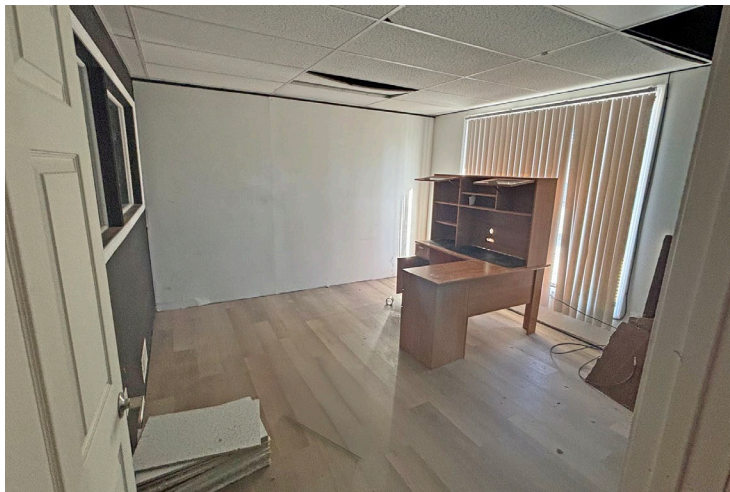
SIGNATURE ASSOCIATES
One Towne Square, Suite 1200
Southfield, MI 48076
www.signatureassociates.com

15755 Wyoming Avenue – Detroit, Michigan

Retail For Sale or Lease

3,054
Square Feet
AVAILABLE

Interior Photos



For more information, please contact:

JOE STACK
(248) 359 0615
jstack@signatureassociates.com

SIGNATURE ASSOCIATES
One Towne Square, Suite 1200
Southfield, MI 48076
www.signatureassociates.com

15755 Wyoming Avenue – Detroit, Michigan

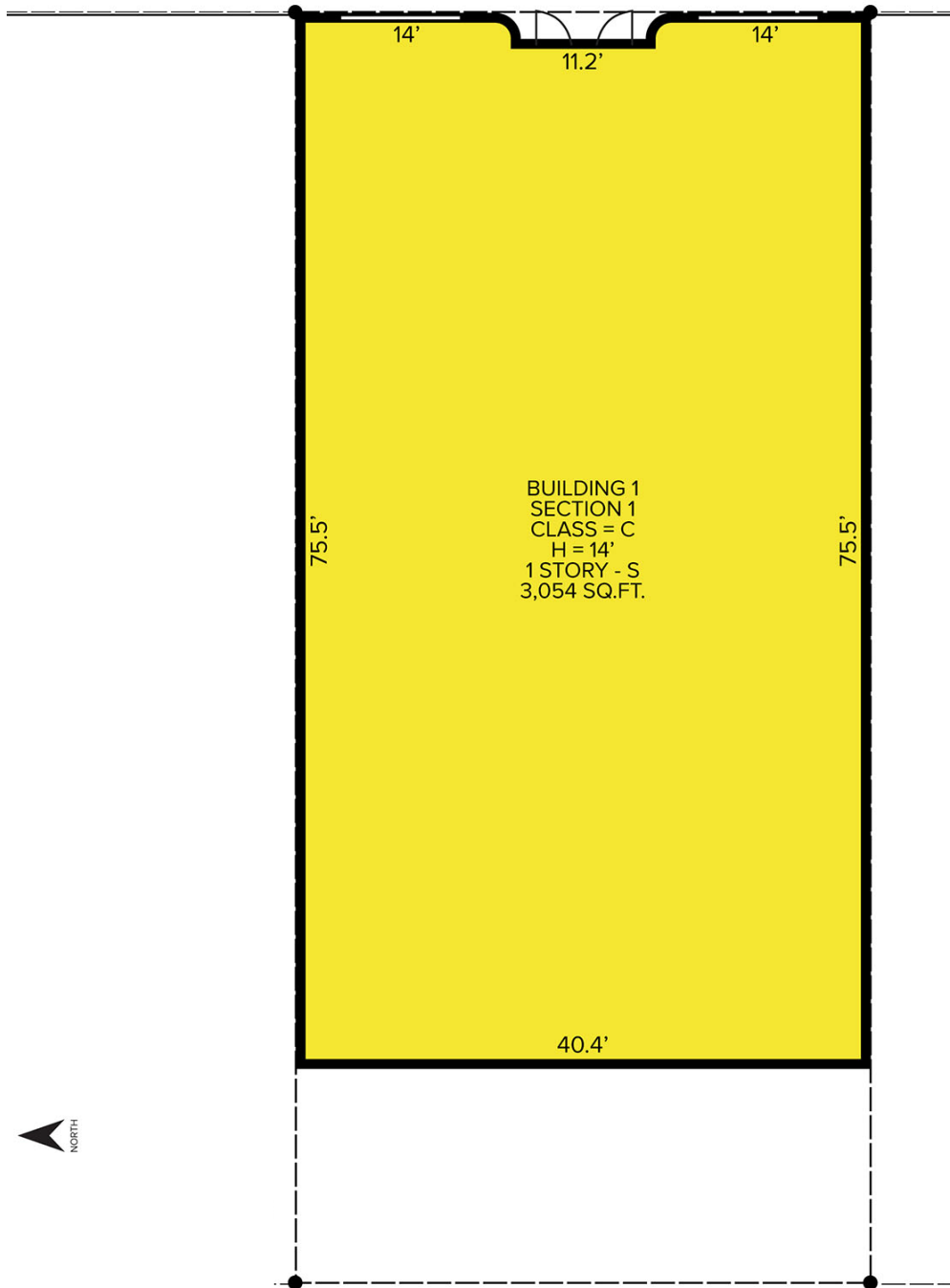
Retail For Sale or Lease

3,054
Square Feet
AVAILABLE

Site Plan

WYOMING AVENUE

SIDEWALK



For more information, please contact:

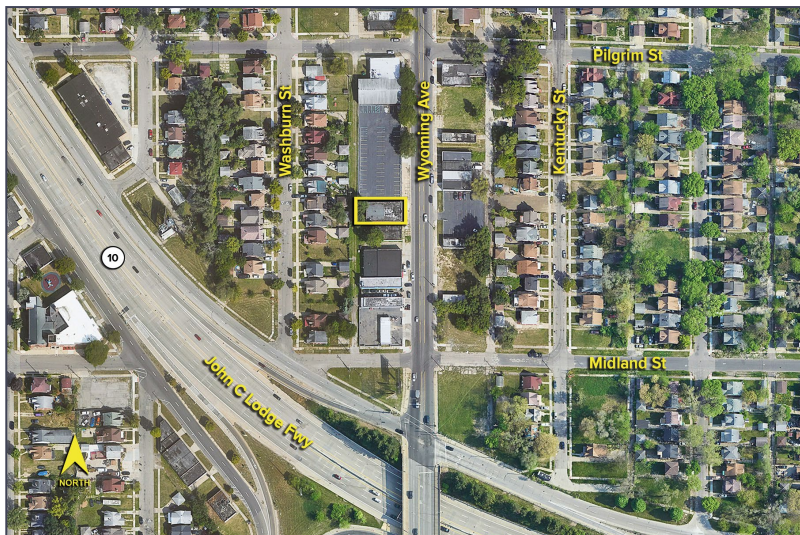
JOE STACK
(248) 359 0615
jstack@signatureassociates.com

SIGNATURE ASSOCIATES
One Towne Square, Suite 1200
Southfield, MI 48076
www.signatureassociates.com

15755 Wyoming Avenue – Detroit, Michigan

Retail For Sale or Lease

3,054
Square Feet
AVAILABLE

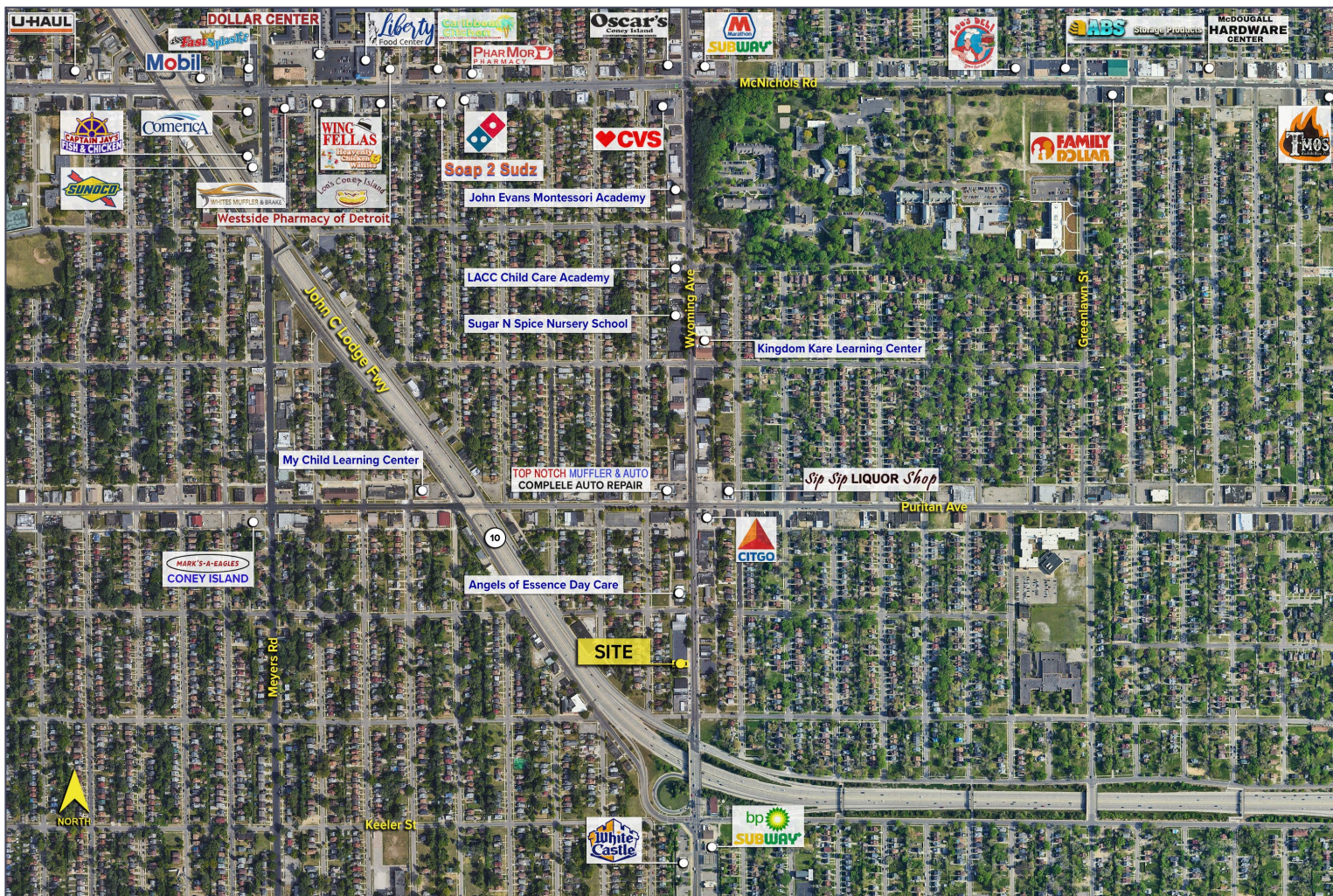


DEMOGRAPHICS

	POPULATION	MED. HH INCOME
1 MILE	21,037	\$41,411
3 MILE	165,051	\$45,649
5 MILE	423,319	\$51,147

TRAFFIC COUNTS (TWO-WAY)

6,159	Puritan St. E of Wyoming Ave.
5,423	Puritan St. W of Wyoming Ave.
16,859	Wyoming St. N of Puritan St.
17,600	Wyoming St. N of Puritan St.



For more information, please contact:

JOE STACK
(248) 359 0615
jstack@signatureassociates.com

SIGNATURE ASSOCIATES
One Towne Square, Suite 1200
Southfield, MI 48076
www.signatureassociates.com