



For Lease

RIPCO
RETAIL LEASING

Syosset, NY

Syosset Plaza
631 Jericho Turnpike

Nassau County
Long Island

1,600 SF + Partial Basement

Inline space available for lease

Contact
Exclusive Agents

Doug Weinstein
dweinstein@ripcony.com | 516.933.8880

John Genovese
jgenovese@ripcony.com | 516.933.8880

Space Details

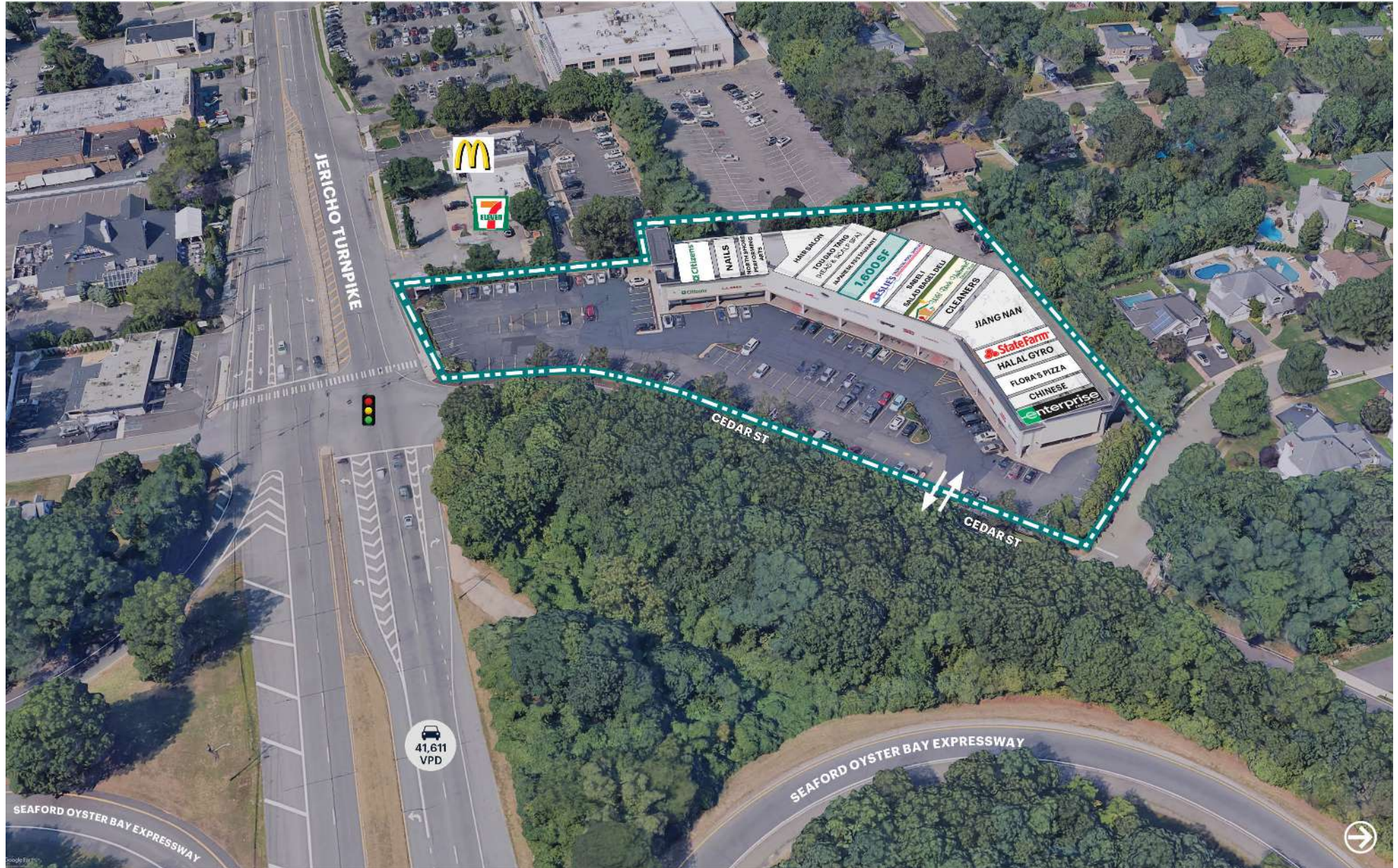


Location	631 Jericho Turnpike
Size	1,600 SF + Basement
Rent	Upon request
Extras	\$15.00 PSF
Co-Tenants	Citizens Bank, C.S. Nails, Leslie's Pool Supplies, Sabeli Salad Bagel Deli, Wild Birds Unlimited, Dry Cleaners, Panda Chinese Food, Enterprise, Halal Gyro, State Farm, Jiang Nan, Flora's Pizza, Tou Dao Tang Head & Scalp Spa
Neighbors	Marshalls & HomeGoods, DSW, Panera Bread, Rare650, Starbucks, AT&T, Chipotle, McDonald's, Chase Bank, TD Bank, Salon O, PM Pediatrics, Cafe Testarossa, Alter Ego Salon, Bank of America, Chris & Tony's, The UPS Store, Mario's Pizzeria, Jersey Mike's, Verizon Wireless, Equinox
Comments	<p>Proximity to the Seaford Oyster Bay Expressway</p> <p>Over 41,000 vehicles pass this site daily on Jericho Turnpike</p> <p>Located at a traffic light intersection within strong gold coast community</p> <p>Approximately 160 Parking Spots</p> <p>Newly renovated shopping center</p> <p>Pylon signage available</p>

Area Retail



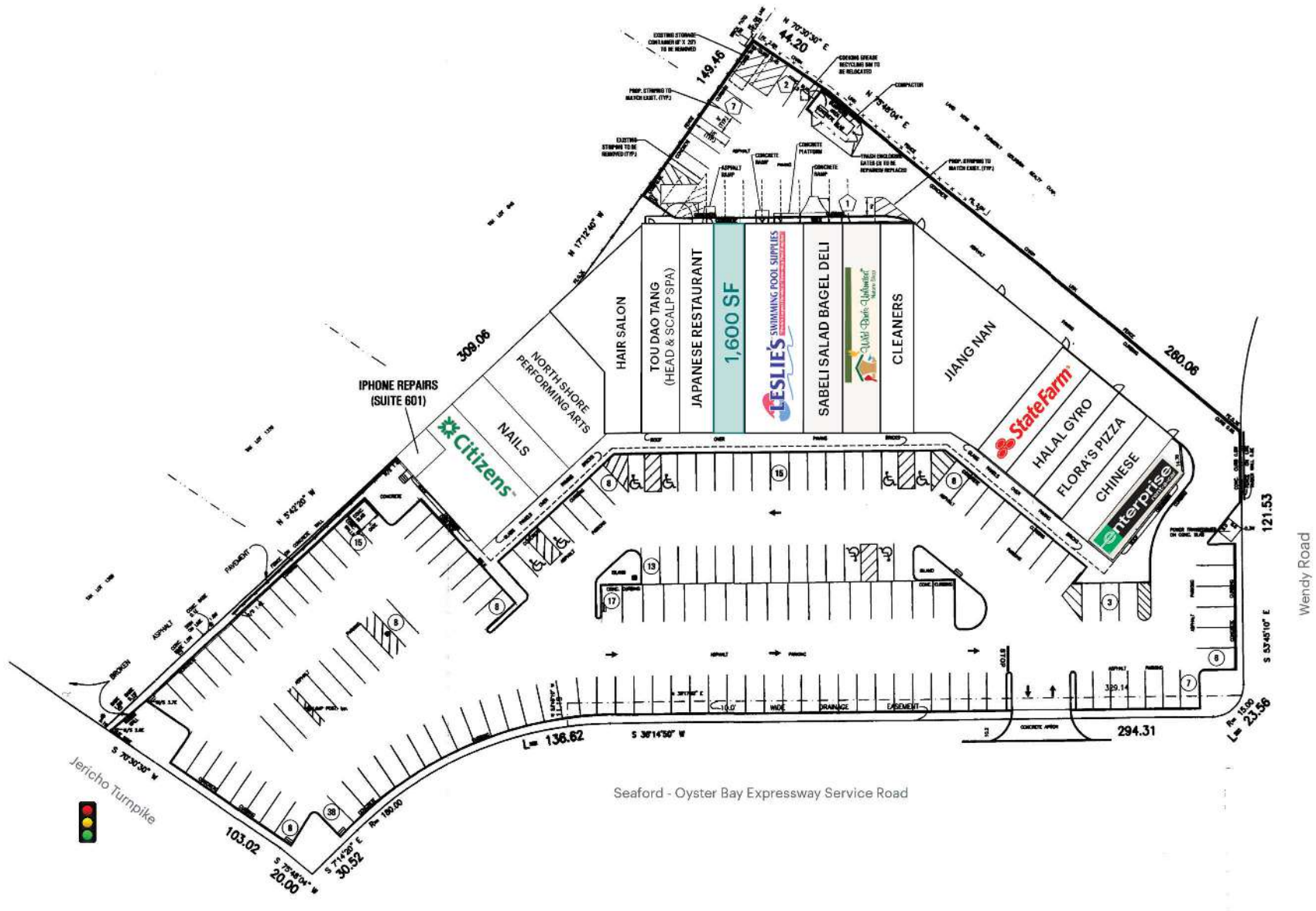
Area Retail



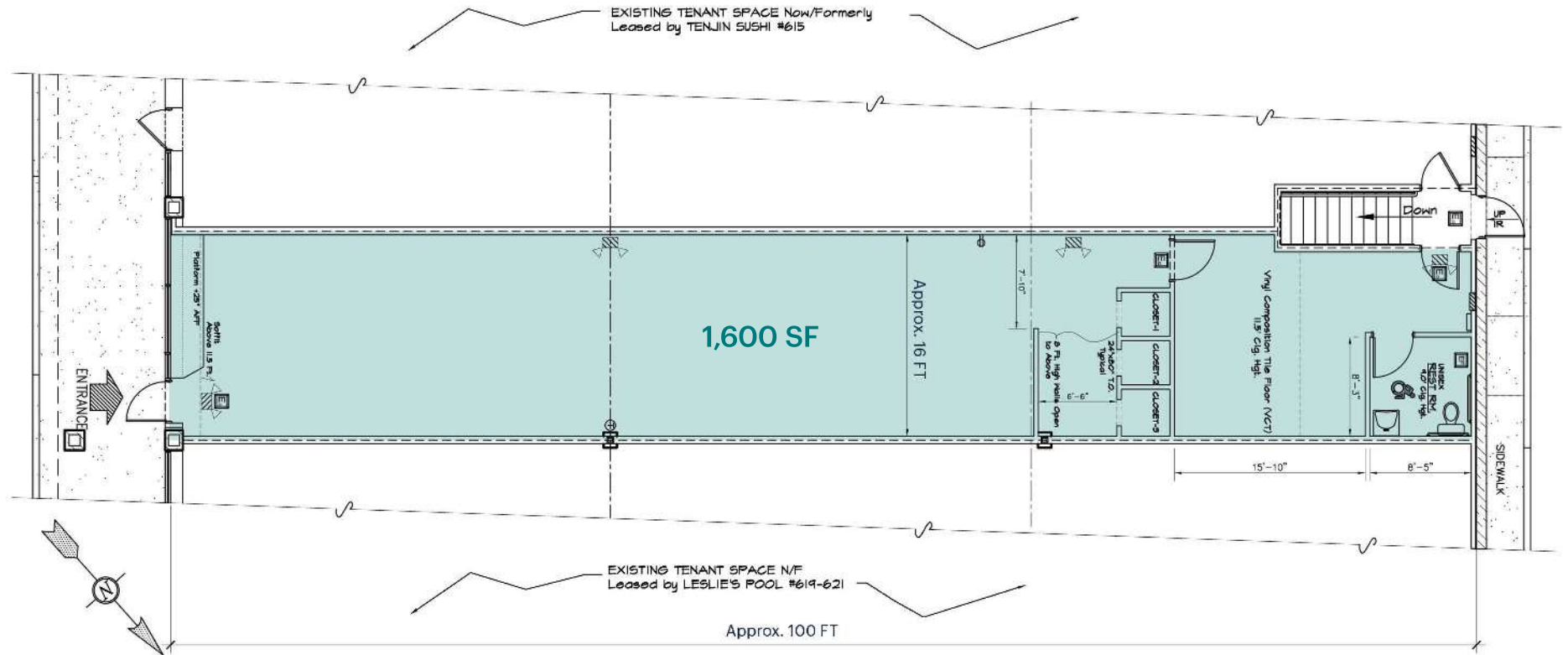
RIPCO
RETAIL LEASING

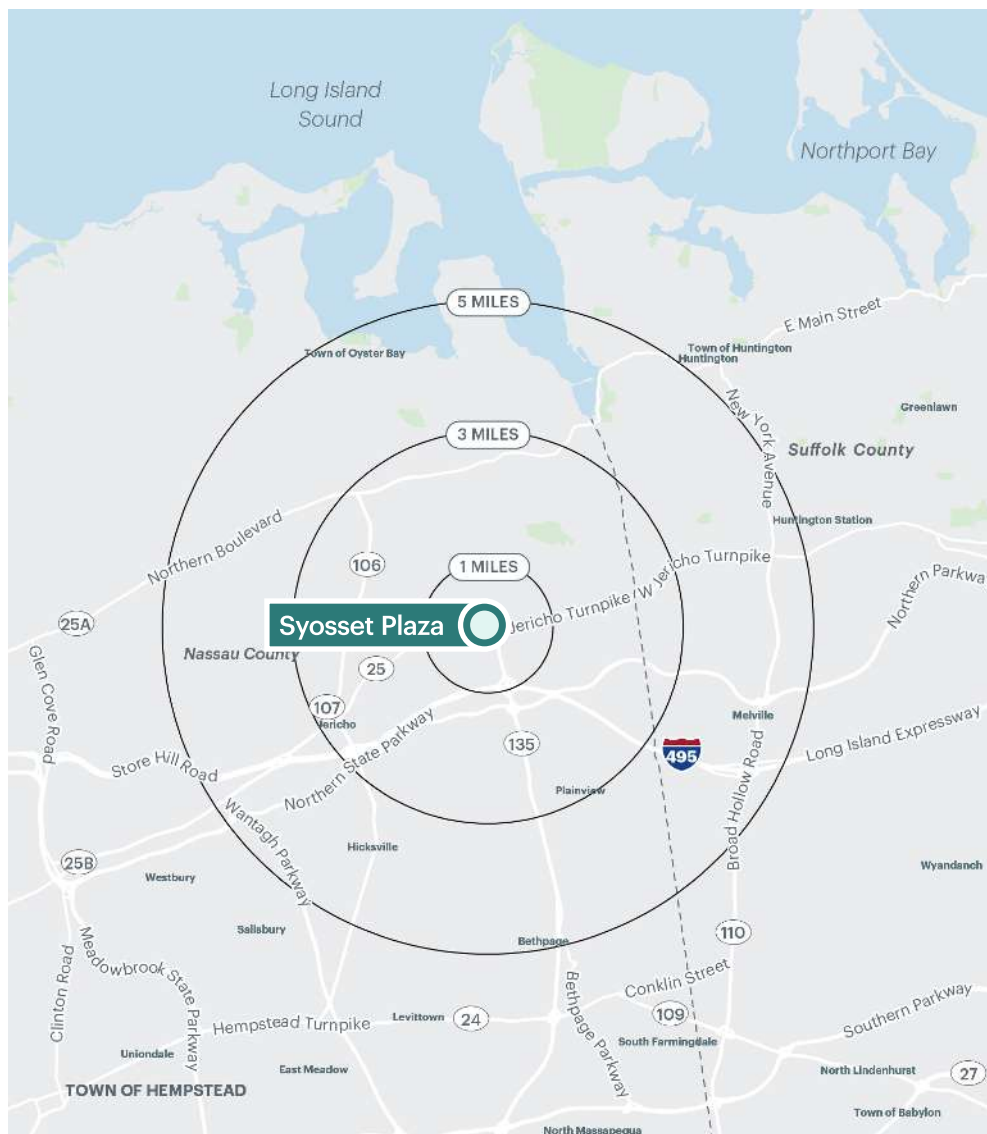
Doug Weinstein | dweinstein@ripcony.com | 516.933.8880

1000 Woodbury Road, Suite 100, Woodbury, NY 11797 | ripcony.com
Information is from sources deemed reliable, but the accuracy is not guaranteed. Square footage is approximate. Buyer must independently verify all information and assumes all risk for inaccuracies.



Floor Plan





Syosset Plaza, Syosset, NY

Area Demographics

	1 mile	3 miles	5 miles
Population	13,022	76,151	198,512
Total Households	4,466	24,426	64,197
Average Household Income	\$232,246	\$248,523	\$223,429
Median Household Income	\$175,187	\$188,313	\$165,341
% Population with Bachelors +	70.0%	68.0%	58.0%
Daytime Population	22,636	99,190	252,462
Total Daytime Employees	15,873	60,257	153,557
Total Businesses	1,069	4,546	12,591