

FOR LEASE



1015 U ST NW

**Lease Rate:
Negotiable**

PROPERTY OVERVIEW

Prime street-level commercial space located in the heart of the U Street Corridor. The property offers excellent visibility, strong pedestrian traffic, and immediate access to the U Street Metro (Green/Yellow Lines). Surrounded by popular restaurants, nightlife, and neighborhood retail, the space is ideal for retail, service, or office users seeking a vibrant, transit-oriented location in NW Washington, DC.

DEMOGRAPHICS

	1 MILE	3 MILES	5 MILES
Households:	52,897	204,836	353,243
Population:	100,109	417,956	760,467
Avg HH Income:	\$173,551	\$168,509	\$162,630

PROPERTY HIGHLIGHTS

- Prime retail on U Street
- Excellent visibility with strong pedestrian and vehicular traffic
- Close proximity to Shaw, Logan Circle, and Downtown DC.

AVAILABLE SPACES

First Floor	550 SF
Second Floor	550 SF
1015 U St NW Total	1,100 SF

FOR FURTHER INFORMATION, PLEASE CONTACT:

SHADI AYYOUBI • shadi.ayyoubi@divaris.com • 703.946.6003

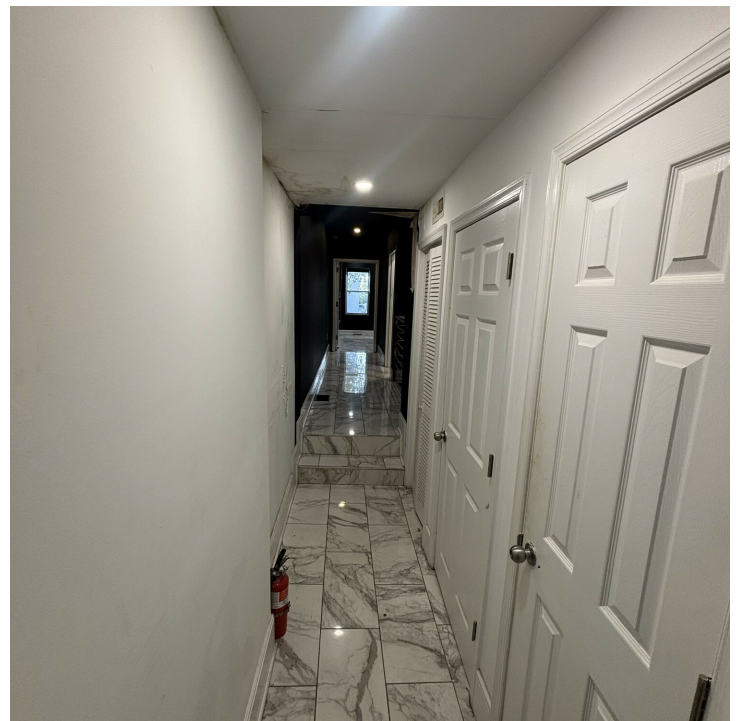
JOEY LEE • joseph.lee@divaris.com • 703.627.2021



1015 U ST NW

WASHINGTON, DC 20001

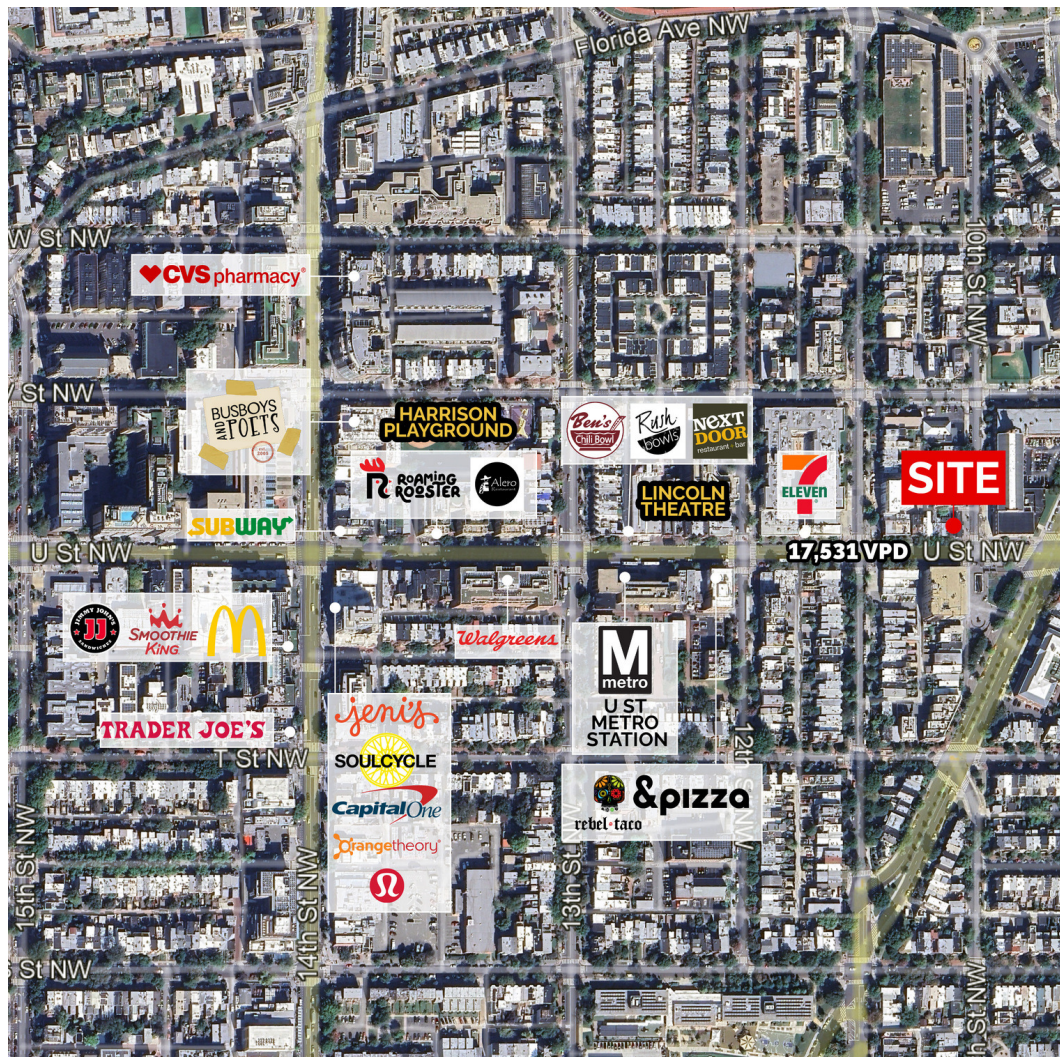
ADDITIONAL PHOTOS



FOR FURTHER INFORMATION, PLEASE CONTACT:
SHADI AYYOUBI • shadi.ayyoubi@divaris.com • 703.946.6003
JOEY LEE • joseph.lee@divaris.com • 703.627.2021



8150 Leesburg Pike, Suite 501, Tysons, VA 22182 | www.divaris.com



Shadi Ayyoubi

Assistant Vice President

703.946.6003

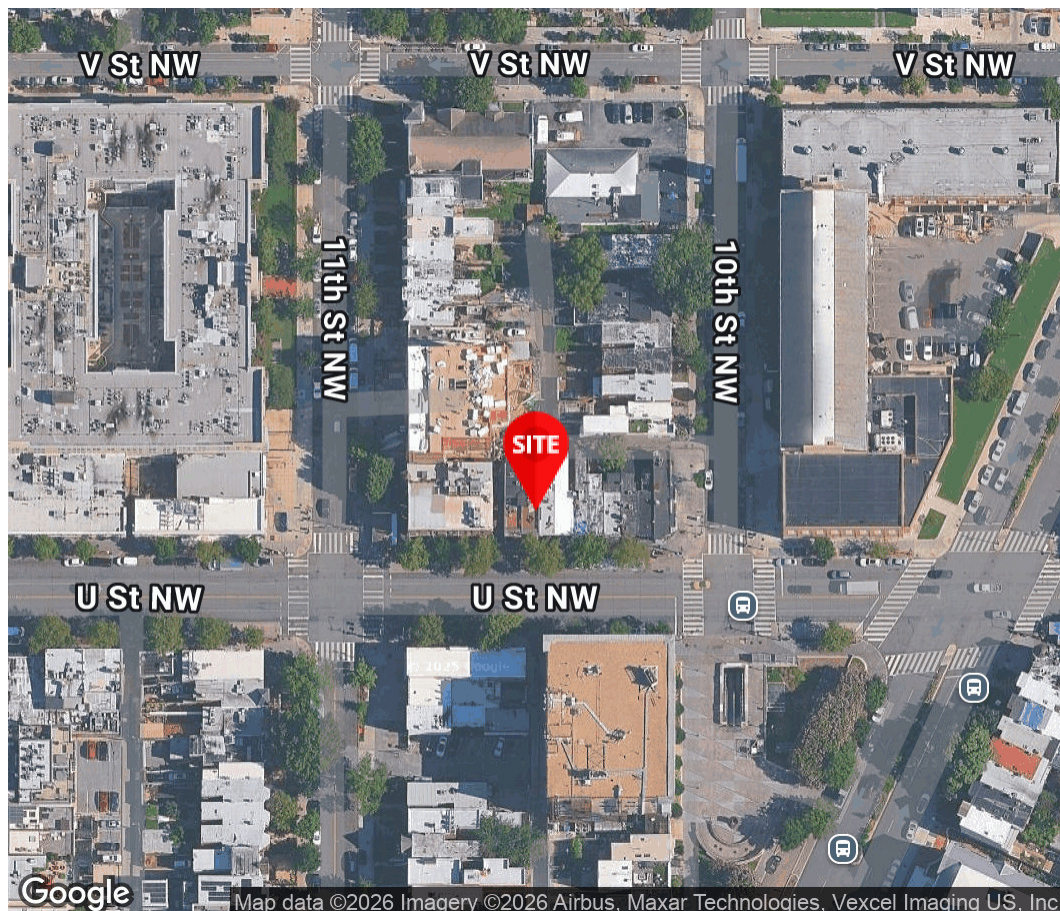
shadi.ayyoubi@divaris.com

Joey Lee

Associate

703.627.2021

joseph.lee@divaris.com



The information contained herein should be considered confidential and remains the sole property of Divaris Real Estate, Inc. at all times. Although every effort has been made to ensure accuracy, no liability will be accepted for any errors or omissions. Disclosure of any information contained herein is prohibited except with the express written permission of Divaris Real Estate, Inc.