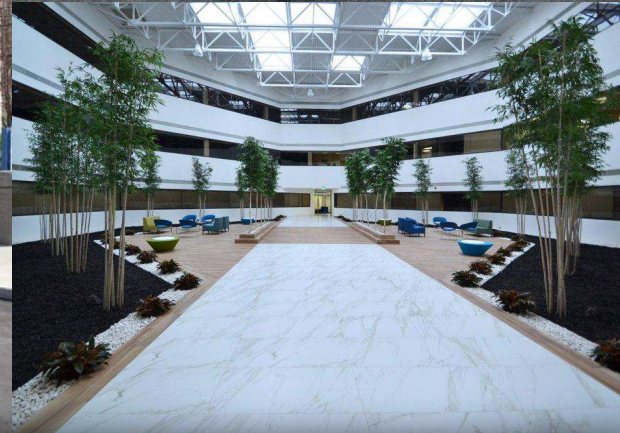


FOR LEASE

ARBORETUM OFFICE PARK - BUILDING TWO



34505 WEST TWELVE MILE ROAD
FARMINGTON HILLS, MI 48331

PROPERTY HIGHLIGHTS:

- Ideal corporate headquarters with visibility from I-696 and 12 Mile Road
- Professional office park situated in a campus-like setting located in the heart of Farmington Hills
- Fully renovated lobbies and common areas
- Energy Star Certified Building
- Existing medical suite options available
- Full-service Arboretum Café, fitness center, sundry shop, Building conference facilities, dry cleaning services, on-site management office
- Beautifully landscaped outdoor arboretum with water fountain, seating areas, and Wi-Fi access
- Ample service parking with several easily accessible entrances
- Building and monument signage available with visibility from I-696
- Existing high-speed data; cable and fiber-optic cabling available
- Quick and easy access to major freeways: I-696, I-275, I-96 and M5
- Within walking distance and close proximity to many area amenities including hotels, restaurants, and shopping centers

The information provided herein along with any attachment(s) was obtained from sources believed to be reliable, however, Friedman Real Estate makes no guarantees, warranties, or representations as to the completeness or accuracy of such information and legal counsel is advised. All information provided is subject to verification and no liability for reliance on such information or errors or omissions is assumed. The presentation of this property is submitted subject to errors, omissions, change of price or conditions, prior sale or lease, or withdrawal without notice. Copyright © 2024 Friedman Real Estate. All rights reserved.

FOR MORE INFORMATION PLEASE CONTACT:



ROBERT GAGNIUK
robert.gagniuk@freg.com



JORDAN FRIEDMAN
jordan.friedman@freg.com



RYLEE BATES
rylee.bates@freg.com

248.324.2000

eCODE 475

