



HIGH BRIDGE
COMMERCIAL REAL ESTATE

FOR LEASE

NAOMI PEAK BUSINESS PARK

1800 N 1000 W LOGAN UT 84321

NEW WAREHOUSE / DISTRIBUTION



PROPERTY HIGHLIGHTS

- Total Buildings: 5
- Total Rentable Area: 751,586 Square Feet
- Divisible: 14,310 Square Feet
- Max Contiguous: 162,665 Square Feet
- Construction: Concrete Tilt-Up
- Q1 2025 Availability
- Please Contact for Pricing and Additional Info



Rob Lindsey

Principal Broker
801-941-1064
rob@highbridgecomre.com

Brandon Lindsey

Vice President
435-237-1750
brandon@highbridgecomre.com



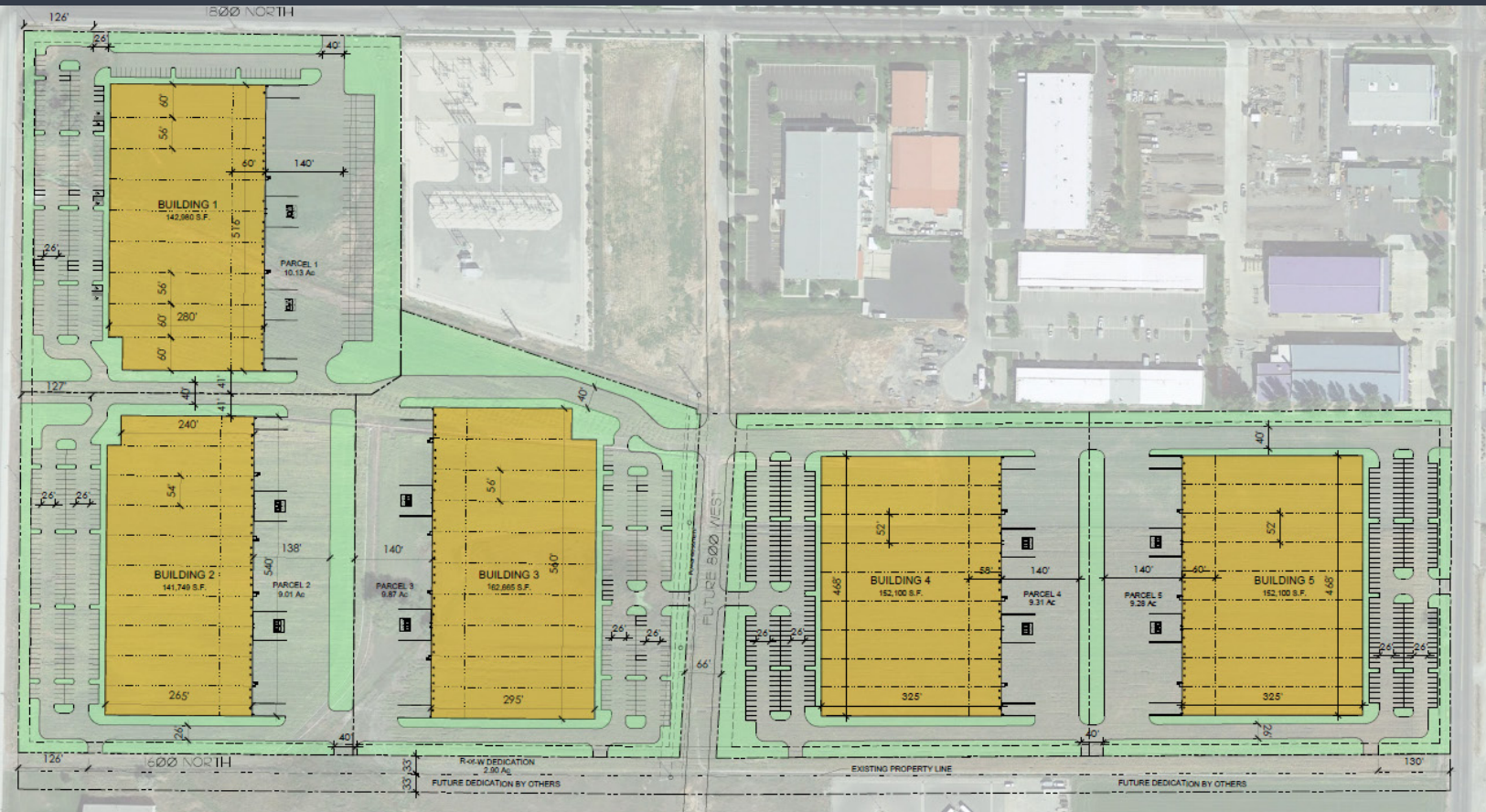
HIGH BRIDGE
COMMERCIAL REAL ESTATE

FOR LEASE

NAOMI PEAK BUSINESS PARK

1800 N 1000 W LOGAN UT 84321

SITE PLAN



Rob Lindsey

Principal Broker
801-941-1064
rob@highbridgecomre.com

Brandon Lindsey

Vice President
435-237-1750
brandon@highbridgecomre.com

No warranty or representation, express or implied, is made to the accuracy or completeness of the information contained herein, and same is submitted subject to errors, omissions, change of price, rental or other conditions, withdrawal without notice, and to any special listing conditions imposed by the property owner(s). As applicable, we make no representation as to the condition of the property (or properties) in question.



HIGH BRIDGE
COMMERCIAL REAL ESTATE

FOR LEASE

NAOMI PEAK BUSINESS PARK

1800 N 1000 W LOGAN UT 84321

REGIONAL MAP



Rob Lindsey

Principal Broker
801-941-1064
rob@highbridgecomre.com

Brandon Lindsey

Vice President
435-237-1750
brandon@highbridgecomre.com

No warranty or representation, express or implied, is made to the accuracy or completeness of the information contained herein, and same is submitted subject to errors, omissions, change of price, rental or other conditions, withdrawal without notice, and to any special listing conditions imposed by the property owner(s). As applicable, we make no representation as to the condition of the property (or properties) in question.