



# PILOT

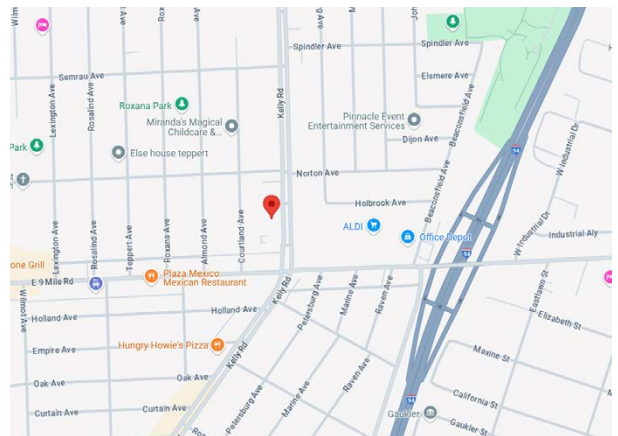
PROPERTY GROUP

**22777 KELLY ROAD, EASTPOINTE, MI 48021**

**PROPERTY OVERVIEW:**

Multiple Square Footages Available - 1,625, 3,250 or 6,500 SF.  
 Ample Parking.  
 Great Location with Excellent Exposure.  
 Contact Broker for more details.

- Property Type:* ..... Office
- Cross Streets:* ..... West side of Kelly, North of 9 Mile Road
- Total Square Footage:* ..... 6,500
- Available Square Footages:* ..... 1,625, 3,250, 6,500
- Parcel Size:* ..... 0.335 Acres
- Year Built:* ..... 1978
- Zoning:* ..... MU1
- Parking Spaces:* ..... Ample
- Heat Type:* ..... Package heating and cooling
- Lease Rate:* ..... \$15.00
- Lease Type:* ..... Gross plus utilities



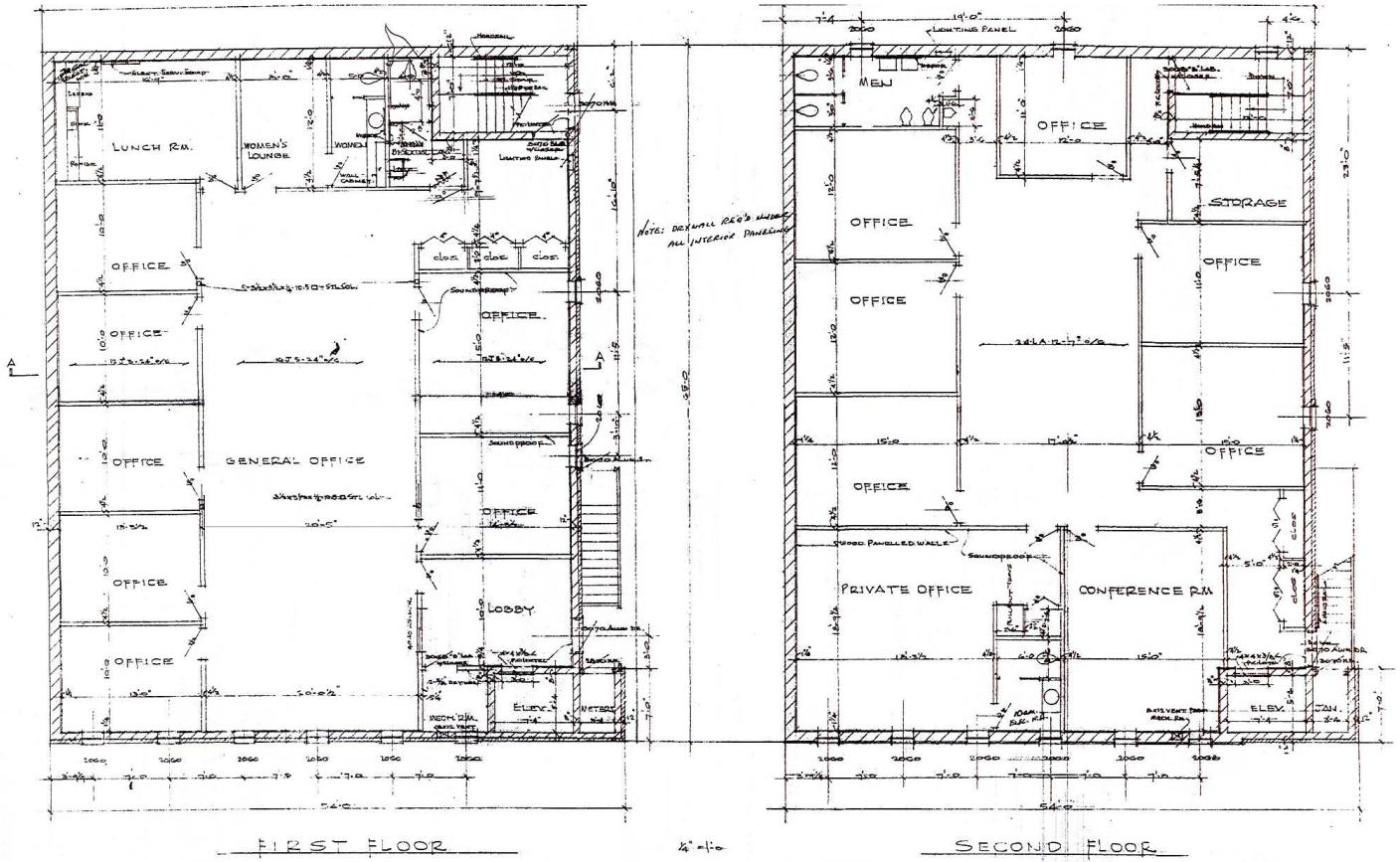
**AGENT CONTACT INFO**

**ALEX TERMINI** O: 586.254.0900 x104 • C: 586.291.0499 • alex@pilotpg.com  
**ANTHONY RUBINO** O: 586.254.0900 x101 • C: 586.873.5419 • anthony@pilotpg.com

*Matching the right people to the right place.*

38600 Van Dyke, Suite 325, Sterling Heights, MI 48312 • 1530 Pine Grove, Suite 4, Port Huron, MI 48060  
 586.254.0900 • www.pilotpg.com

## FLOORPLAN



*Matching the right people to the right place.*

*ADDITIONAL PHOTOS*



*Matching the right people to the right place.*

**ADDITIONAL PHOTOS**



*Matching the right people to the right place.*

38600 Van Dyke, Suite 325, Sterling Heights, MI 48312 • 1530 Pine Grove, Suite 4, Port Huron, MI 48060  
586.254.0900 • [www.pilotpg.com](http://www.pilotpg.com)