



CUSHMAN &
WAKEFIELD

THALHIMER

TRUIST PLAZA



510 S Jefferson Street
Roanoke, Virginia 24011





PROPERTY OVERVIEW

TOTAL BUILDING SIZE	139,547 SF
BUILDING HEIGHT	9 Stories
AVAILABLE	1,826 SF-15,033 SF
LEASE RATE	Competitive Rates
PARKING	Attached Parking Garage

LOCATION OVERVIEW

Located on corner of Jefferson Street and Franklin Road. Close to downtown attractions and dining.

60+ restaurants and retail establishments within walking distance

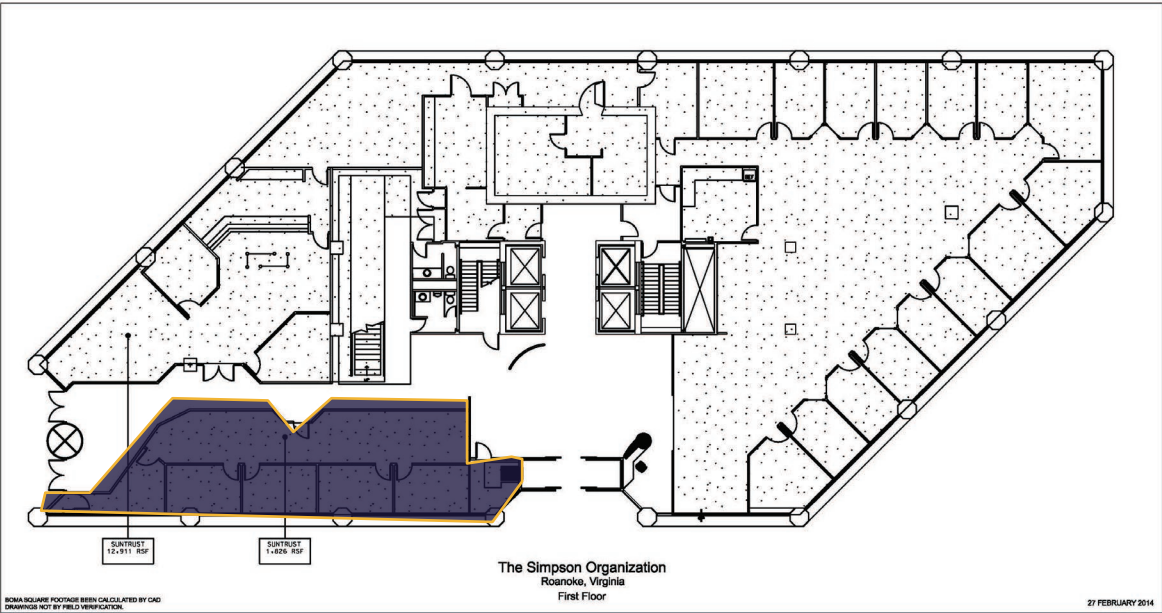
JOIN CORPROATE TENANTS



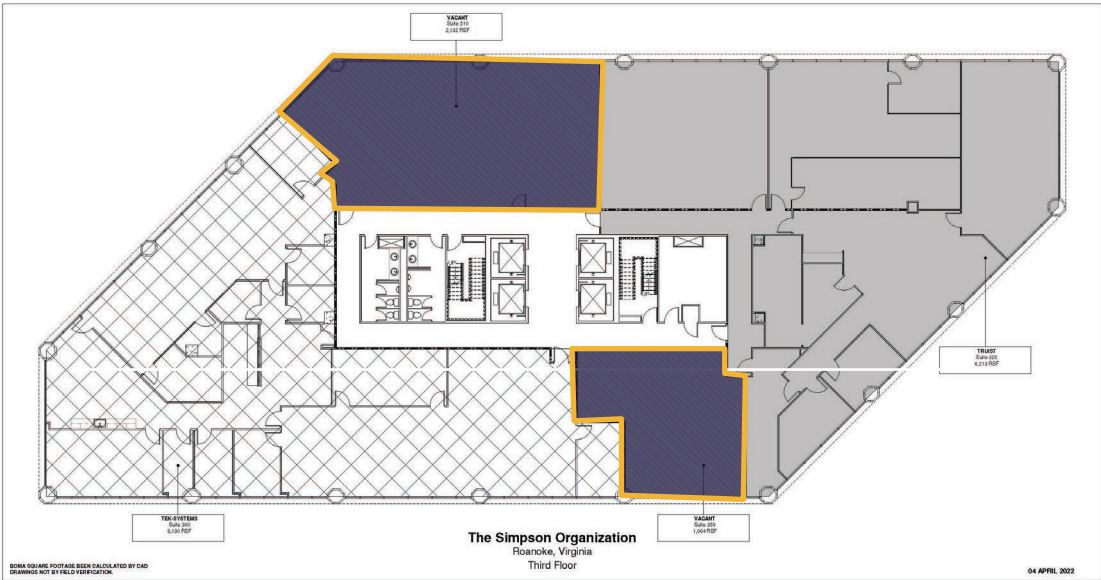
GENTRY LOCKE
Attorneys



FIRST FLOOR 1,826 RSF



THIRD FLOOR 2,132 RSF & 1,064 RSF



FLOOR PLANS

FIRST FLOOR

Entry Suite
Lease Rate
1,826 RSF
\$26.00 SF

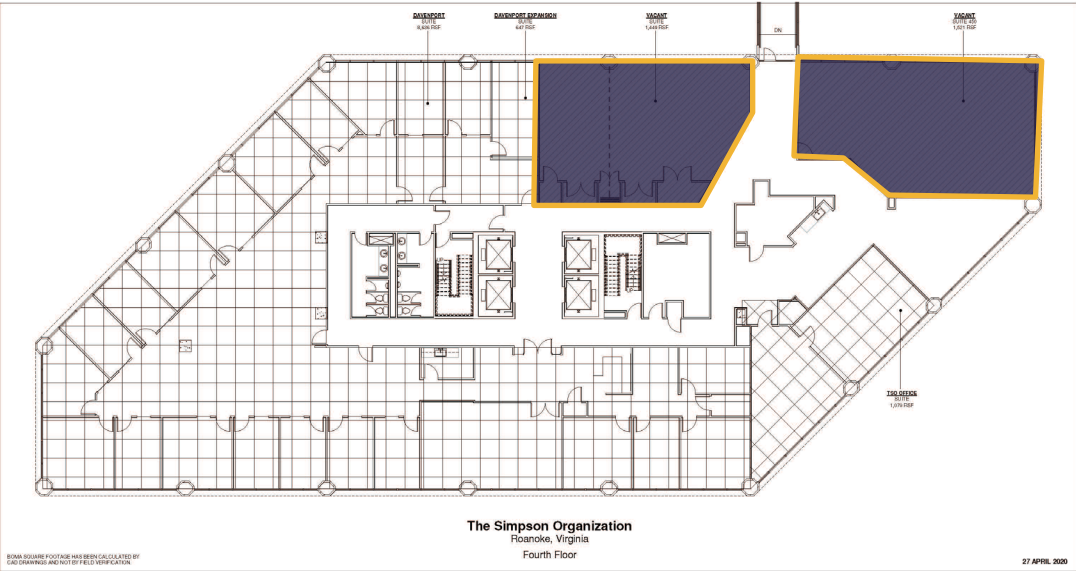
THIRD FLOOR

Suite 310
Suite 350
Lease Rate
2,132 RSF
1,064 RSF
\$26.00 SF

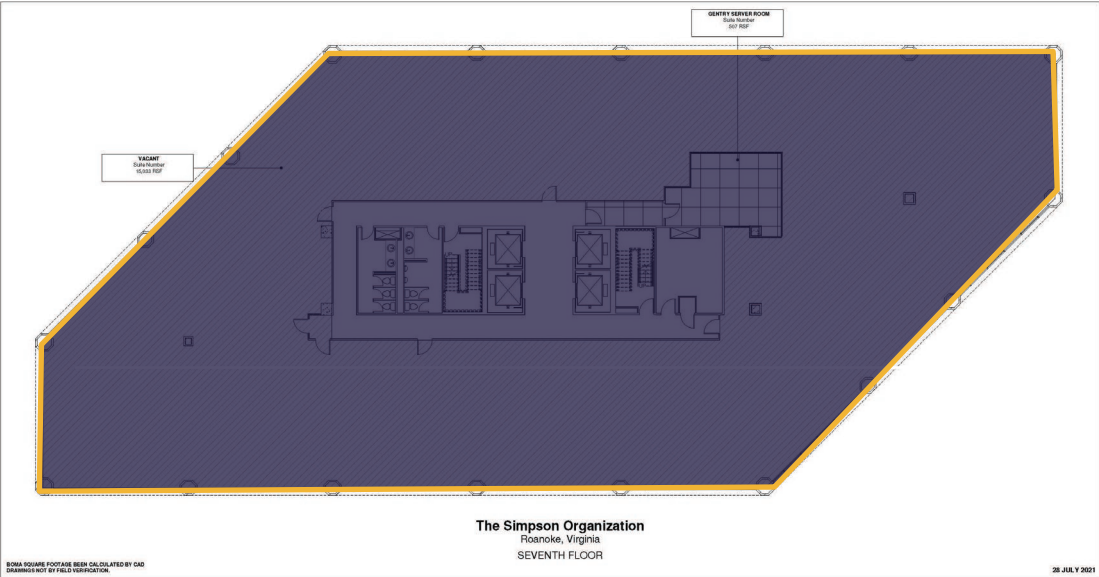
MODERN OFFICE SPACE

LOCATED IN THE HEART OF
DOWNTOWN ROANOKE

FOURTH FLOOR 1,449 RSF & 1,521 RSF



SEVENTH FLOOR 15,030 RSF



FLOOR PLANS

FOURTH FLOOR

Suite 400	1,449 RSF
Suite 450	1,521 RSF
Lease Rate	\$26.00 SF

SEVENTH FLOOR

Seventh Floor Suite	15,033 RSF
Lease Rate	\$26.00 SF

MODERN OFFICE SPACE

LOCATED IN THE HEART OF DOWNTOWN ROANOKE

LOCATION



**BUS TRANSPORT
STATION**

COURTHOUSE

**HIGHER EDUCATION
CENTER**

HOTEL ROANOKE

AMTRAK

TAUBMAN MUSEUM

**ROANOKE CITY
MARKET
BUILDING**

TRUIST PLAZA

**PATRICK HENRY
HOTEL**

ELMWOOD PARK

ELM AVENUE

JEFFERSON STREET

WILLIAMSON RD SE

FRANKLIN RD SE

581

220

LEASING

For more information, please contact:

Barry Ward

First Vice President

540 767 3015

barry.ward@thalhimer.com

Thalhimer

310 First Street, Suite 300

Roanoke, VA 24011

thalhimer.com



**CUSHMAN &
WAKEFIELD**

THALHIMER

Independently Owned and Operated / A Member of the Cushman & Wakefield Alliance

Cushman & Wakefield | Thalhimer © 2025. No warranty or representation, express or implied, is made to the accuracy or completeness of the information contained herein, and same is submitted subject to errors, omissions, change of price, rental or other conditions, withdrawal without notice, and to any special listing conditions imposed by the property owner(s). As applicable, we make no representation as to the condition of the property (or properties) in question.

