

# FOR LEASE

±4,105 Sq. Ft.

**LIZOTTE**  
AND ASSOCIATES REAL ESTATE INC



**2835 Mill Woods Road, Edmonton, AB**

## MEDICAL CLINIC IN KAMEYOSEK

### Property Highlights

- Eight offices plus eight examination rooms
- Multiple washrooms
- Welcoming reception and spacious waiting area
- Ample on-site parking
- Adjacent to Covenant Health's head office
- Steps from the Lakewood Transit Centre
- Professionally managed building



780.488.0888



[www.lizotterealestate.com](http://www.lizotterealestate.com)



#1200, 10117 Jasper Avenue  
Edmonton, AB T5J 1W8



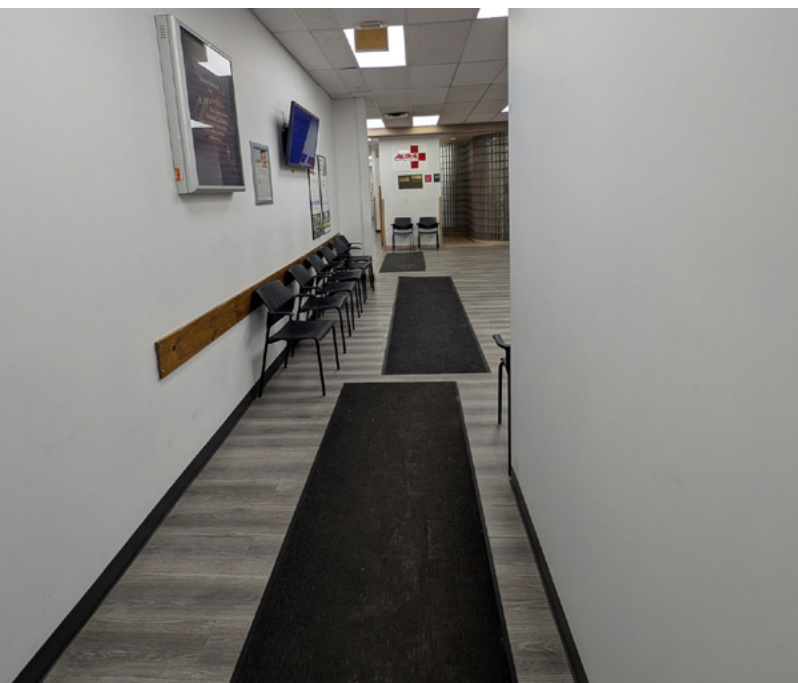
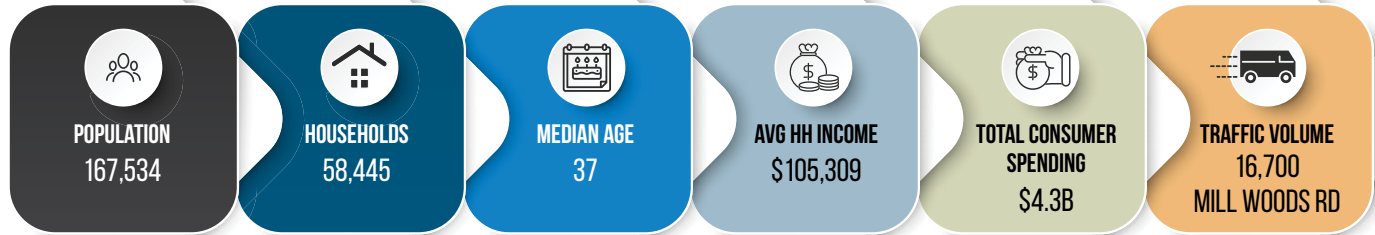
No warranty or representation, expressed or implied, is made as to the accuracy of the information contained herein, and same is submitted subject to errors, omissions, change of price, rental or other conditions, withdrawal without notice, and to any specific listing condition, imposed by our principals.

# FOR LEASE

Medical Clinic in Kameyosek

**LIZOTTE**  
AND ASSOCIATES REAL ESTATE INC

## Demographics within 5KM

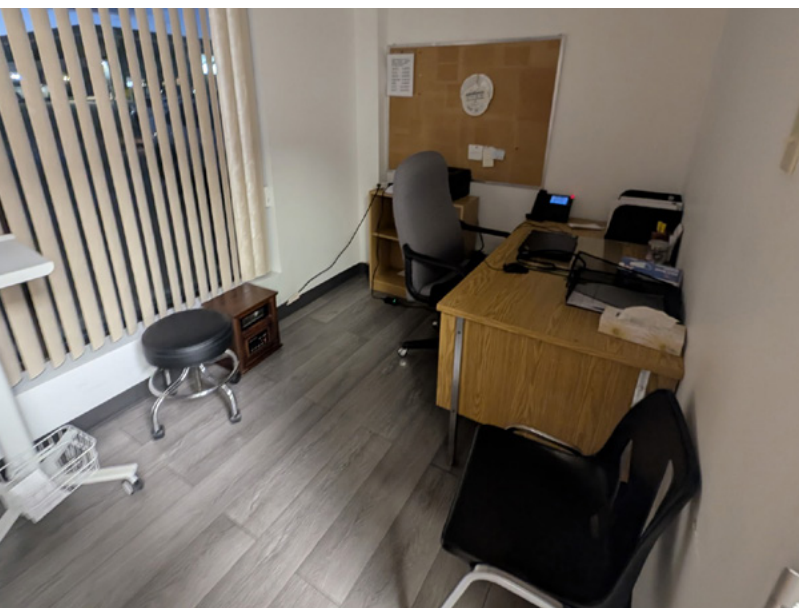




# FOR LEASE

Medical Clinic in Kameyosek

**LIZOTTE**  
AND ASSOCIATES REAL ESTATE INC





# FOR LEASE

## Medical Clinic in Kameyosek

**LIZOTTE**  
AND ASSOCIATES REAL ESTATE INC

### Property Information

**Municipal Address:** 2835 Mill Woods Road NW, Edmonton, AB

**Legal Address:** Plan 3385TR Block 7 Lot 5

**Size:** 4,105 Sq. Ft. (+/-)

**Zoning:** MU (Mixed-Use)

**Parking:** Scramble parking

**Possession:** March 2026

\$\$\$

**Lease Rate:** \$30.00/Sq. Ft.

**Op Costs:** \$15.00/Sq. Ft.

### Contact

**Richard Lizotte**

President/Broker

Cell: 780.292.1871

Direct: 780.784.5360

richard@lizotterealestate.com

**Lee Berger**

Associate Broker

Cell: 587.983.6654

Direct: 780.784.5363

lee@lizotterealestate.com

**Cynthia Leduc**

Unlicensed Assistant

Direct: 780.784.5359

cynthia@lizotterealestate.com

**Chuck Clubine**

Senior Associate

Cell: 780.264.7773

Direct: 780.784.6553

chuck@lizotterealestate.com

**Tom Dean**

Associate

Cell: 780.920.8019

Direct: 780.784.6550

tom@lizotterealestate.com

