



**For Lease- Medical Office Space**  
**2150 NE Division Street - Gresham, OR 97030**

Heather Miller  
KW Commercial  
503-310-1935





# PROPERTY INFORMATION

## FEATURES

- 4,012 SF Available
- Beautiful turn-key medical space
- Reception, lobby/waiting room
- 10 exam rooms - 5 private offices
- 1 procedure room
- Billing/bookkeeping area
- Storage/data room
- MA/Nurse station/Lab
- Kitchenette/breakroom/staff room
- ADA compliant restroom
- Excellent street visibility
- Monument signage available
- Plenty of off-street parking
- Lots of nearby amenities
- Do not disturb current tenants
- Available June 1, 2024



Back of building - Employee parking

## LEASE RATE

\$25/SF - Full Service

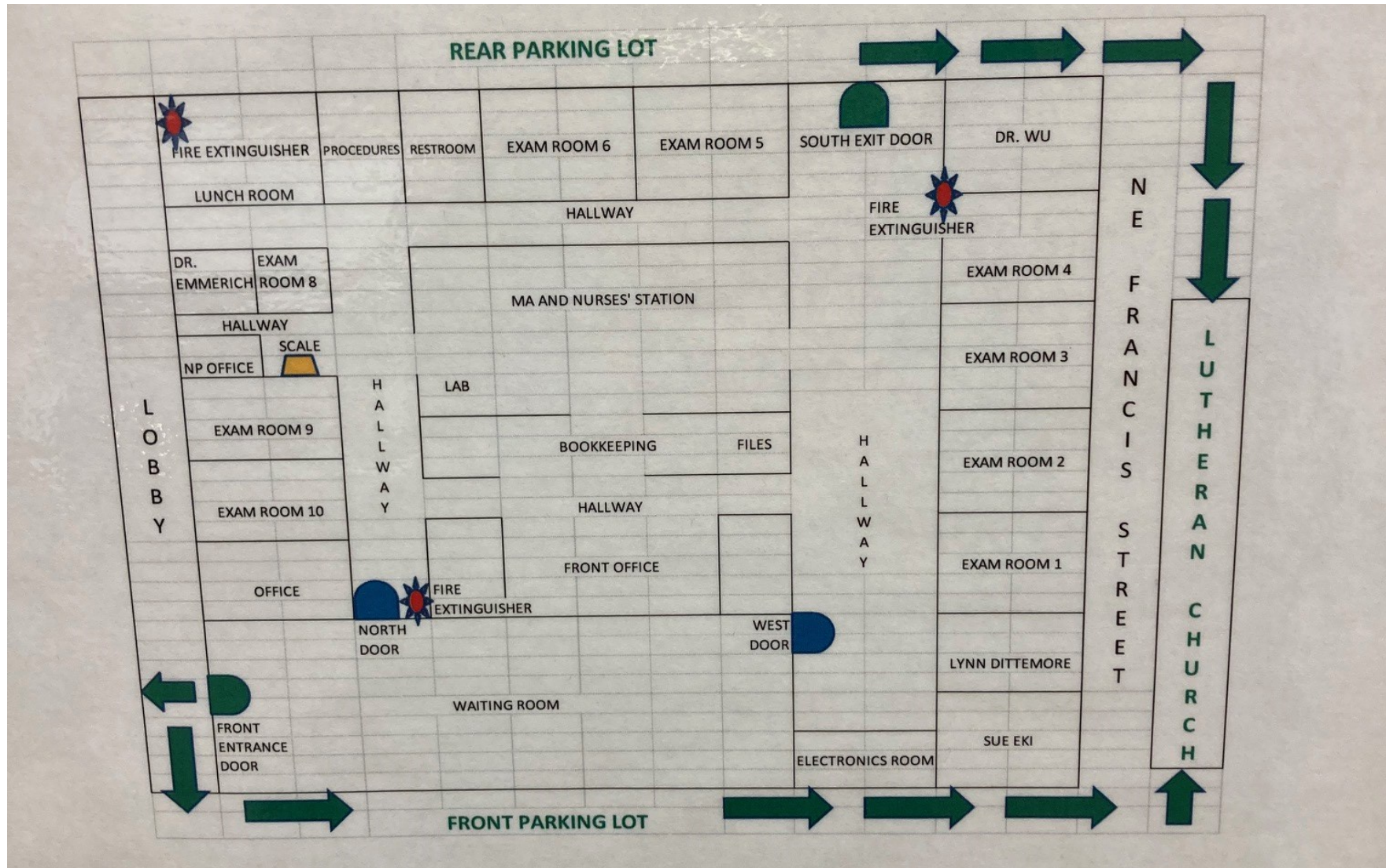
Call to schedule a tour

2150 NE Division Street  
Gresham, OR 97030





# FLOOR PLAN



2150 NE Division Street  
Gresham, OR 97030



# INTERIOR PHOTOS

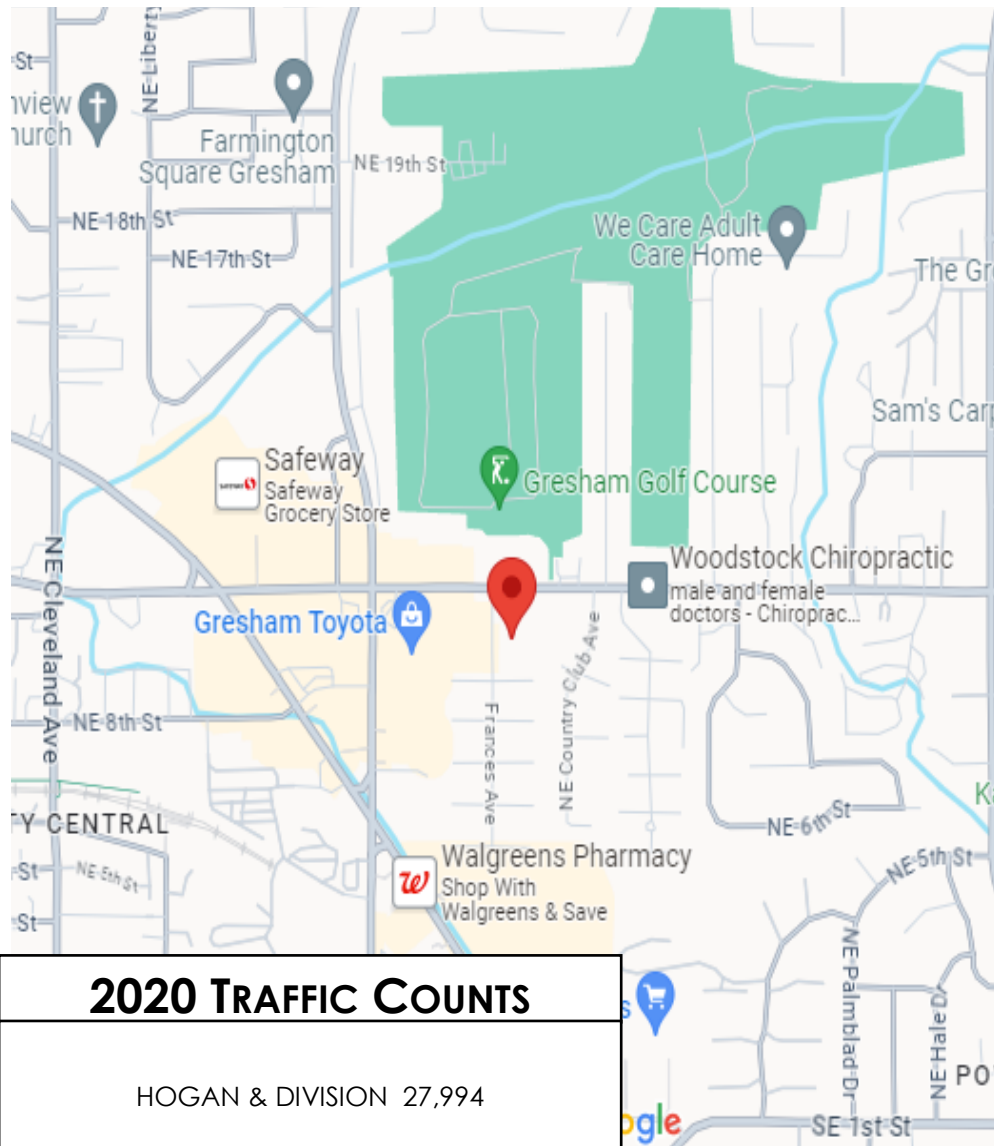


2150 NE Division Street  
Gresham, OR 97030





# LOCATION



2150 NE Division Street  
Gresham, OR 97030

2150 NE Division Street  
Gresham, OR 97030

**Exclusively Listed By:**

**Heather Miller**

KW Commercial - Portland Central

Oregon Licensed Broker

(503) 444-5819

heather\_miller@kw.com

**Confidentiality & Disclaimer:**

All materials and information received or derived from KW Commercial its directors, officers, agents, advisors, affiliates and/or any third party sources are provided without representation or warranty as to completeness, veracity, or accuracy, condition of the property, compliance or lack of compliance with applicable governmental requirements, developability or suitability, financial performance of the property, projected financial performance of the property for any party's intended use or any and all other matters.

Neither KW Commercial its directors, officers, agents, advisors, or affiliates makes any representation or warranty, express or implied, as to accuracy or completeness of the any materials or information provided, derived, or received. Materials and information from any source, whether written or verbal, that may be furnished for review are not a substitute for a party's active conduct of its own due diligence to determine these and other matters of significance to such party. KW Commercial will not investigate or verify any such matters or conduct due diligence for a party unless otherwise agreed in writing.

EACH PARTY SHALL CONDUCT ITS OWN INDEPENDENT INVESTIGATION AND DUE DILIGENCE.

Any party contemplating or under contract or in escrow for a transaction is urged to verify all information and to conduct their own inspections and investigations including through appropriate third party independent professionals selected by such party. All financial data should be verified by the party including by obtaining and reading applicable documents and reports and consulting appropriate independent professionals. KW Commercial makes no warranties and/or representations regarding the veracity, completeness, or relevance of any financial data or assumptions. KW Commercial does not serve as a financial advisor to any party regarding any proposed transaction.

All data and assumptions regarding financial performance, including that used for financial modeling purposes, may differ from actual data or performance. Any estimates of market rents and/or projected rents that may be provided to a party do not necessarily mean that rents can be established at or increased to that level. Parties must evaluate any applicable contractual and governmental limitations as well as market conditions, vacancy factors and other issues in order to determine rents from or for the property. Legal questions should be discussed by the party with an attorney. Tax questions should be discussed by the party with a certified public accountant or tax attorney. Title questions should be discussed by the party with a title officer or attorney. Questions regarding the condition of the property and whether the property complies with applicable governmental requirements should be discussed by the party with appropriate engineers, architects, contractors, other consultants and governmental agencies.

KW COMMERCIAL - PORTLAND CENTRAL  
919 NE 19TH AVE, SUITE 100, PORTLAND, OR 97232

Each Office is independently owned and operated

