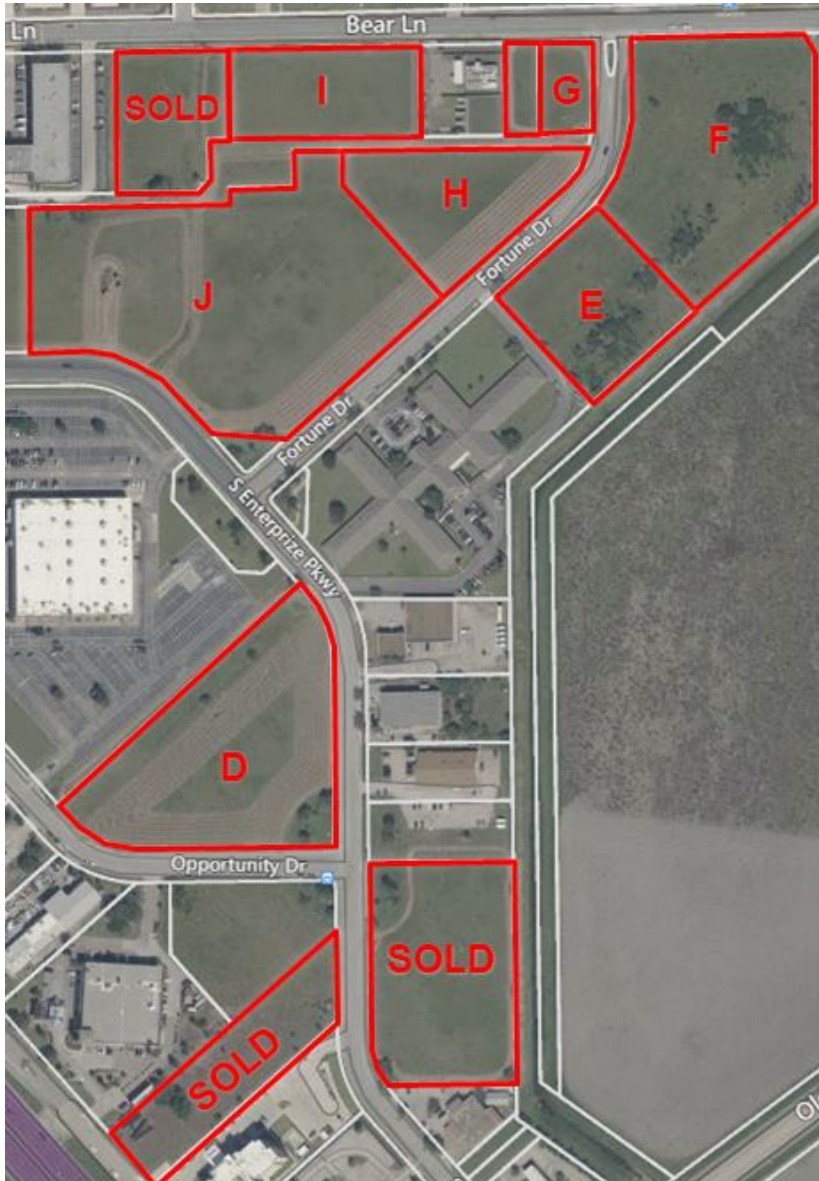


PROPERTY SUMMARY



PROPERTY DESCRIPTION

Large tracts may be divided.

LOCATION DESCRIPTION

Located on Bear Lane and Enterprize Parkway with easy access to South Padre Island Drive (SH 358), Crosstown Expressway SH 286) IH 37, Corpus Christi International Airport and downtown Corpus Christi.

Area development includes Penske, Texas Parks & Wildlife, service, industrial, office, retail, West Oso High School, First Data, VA clinic and more.

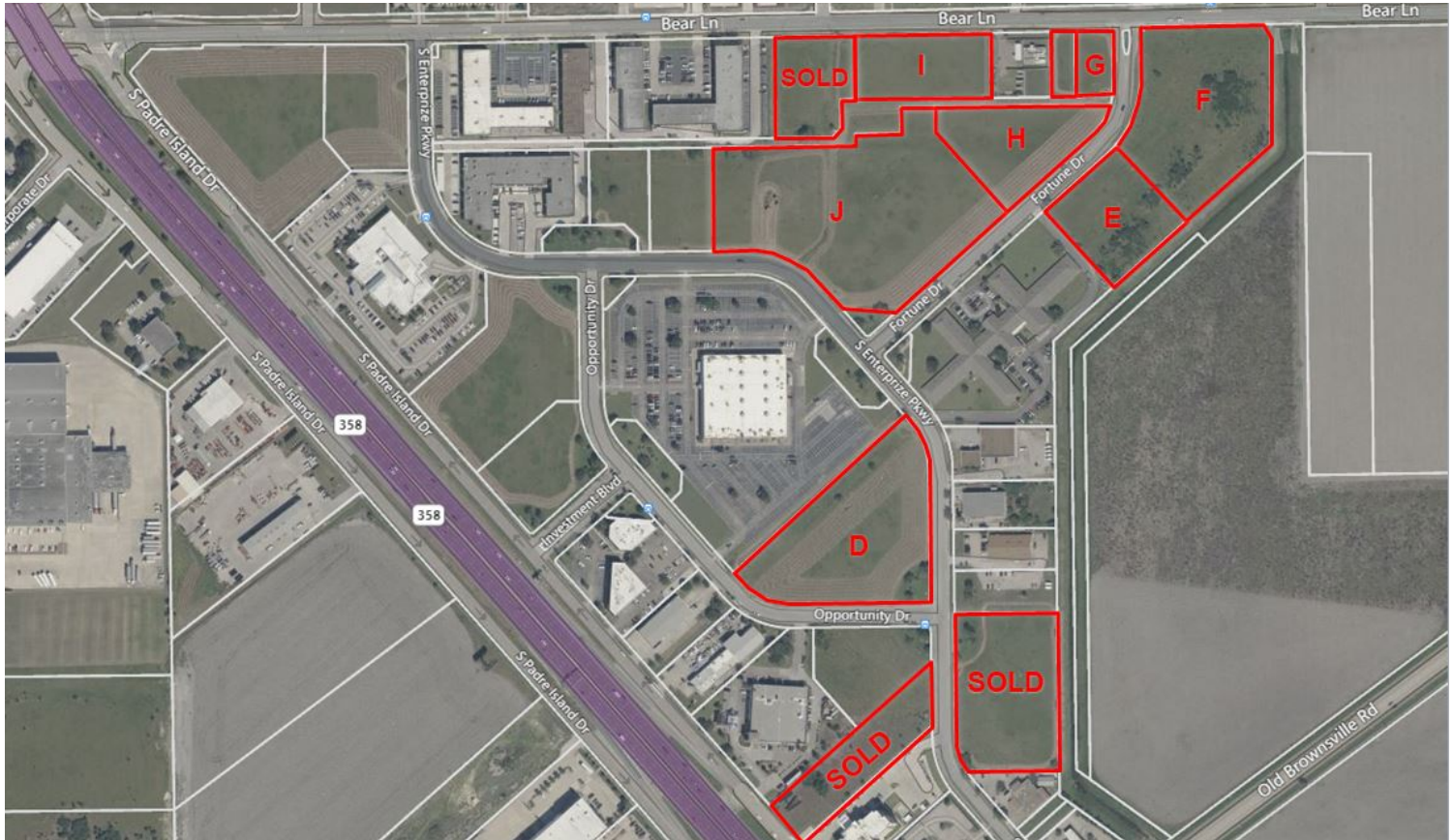
OFFERING SUMMARY

Sale Price:	See 'Land Tracts' Page
Total Lot Size:	29.22 Acres

LYNANN PINKHAM
361.288.3102
lynann@craveyrealestate.com

Cravey
Real Estate Services, Inc.
361-289-5168
Corpus Christi, TX

LAND TRACTS



OF TRACTS 7 | TRACT SIZE AVAILABLE 0.47 - 7.3 ACRES

STATUS	TRACT #	SUB-TYPE	SIZE	PRICE	ZONING
Available	D	Industrial	4.34 Acres	\$5.00/SF	Light Industrial
Available	E	Industrial	2.29 Acres	\$4.00/SF	Light Industrial
Available	F	Industrial	5.48 Acres	\$4.00/SF	Light Industrial
Available	G	Industrial	0.47 Acres	\$4.00/SF	Light Industrial
Available	H	Industrial	2.1 Acres	\$4.00/SF	Light Industrial
Available	I	Industrial	3.24 Acres	\$4.00/SF	Light Industrial
Available	J	Industrial	7.3 Acres	\$4.00/SF	Light Industrial

LYNANN PINKHAM
 361.288.3102
 lynann@craveyrealestate.com

Cravey
 Real Estate Services, Inc.
 361-289-5168
 Corpus Christi, TX



Information About Brokerage Services

11-2-2015

Texas law requires all real estate license holders to give the following information about brokerage services to prospective buyers, tenants, sellers and landlords.

TYPES OF REAL ESTATE LICENSE HOLDERS:

- **A BROKER** is responsible for all brokerage activities, including acts performed by sales agents sponsored by the broker.
- **A SALES AGENT** must be sponsored by a broker and works with clients on behalf of the broker.

A BROKER'S MINIMUM DUTIES REQUIRED BY LAW (A client is the person or party that the broker represents):

- Put the interests of the client above all others, including the broker's own interests;
- Inform the client of any material information about the property or transaction received by the broker;
- Answer the client's questions and present any offer to or counter-offer from the client; and
- Treat all parties to a real estate transaction honestly and fairly.

A LICENSE HOLDER CAN REPRESENT A PARTY IN A REAL ESTATE TRANSACTION:

AS AGENT FOR OWNER (SELLER/LANDLORD): The broker becomes the property owner's agent through an agreement with the owner, usually in a written listing to sell or property management agreement. An owner's agent must perform the broker's minimum duties above and must inform the owner of any material information about the property or transaction known by the agent, including information disclosed to the agent or subagent by the buyer or buyer's agent.

AS AGENT FOR BUYER/TENANT: The broker becomes the buyer/tenant's agent by agreeing to represent the buyer, usually through a written representation agreement. A buyer's agent must perform the broker's minimum duties above and must inform the buyer of any material information about the property or transaction known by the agent, including information disclosed to the agent by the seller or seller's agent.

AS AGENT FOR BOTH - INTERMEDIARY: To act as an intermediary between the parties the broker must first obtain the written agreement of *each party* to the transaction. The written agreement must state who will pay the broker and, in conspicuous bold or underlined print, set forth the broker's obligations as an intermediary. A broker who acts as an intermediary:

- Must treat all parties to the transaction impartially and fairly;
- May, with the parties' written consent, appoint a different license holder associated with the broker to each party (owner and buyer) to communicate with, provide opinions and advice to, and carry out the instructions of each party to the transaction.
- Must not, unless specifically authorized in writing to do so by the party, disclose:
 - that the owner will accept a price less than the written asking price;
 - that the buyer/tenant will pay a price greater than the price submitted in a written offer; and
 - any confidential information or any other information that a party specifically instructs the broker in writing not to disclose, unless required to do so by law.

AS SUBAGENT: A license holder acts as a subagent when aiding a buyer in a transaction without an agreement to represent the buyer. A subagent can assist the buyer but does not represent the buyer and must place the interests of the owner first.

TO AVOID DISPUTES, ALL AGREEMENTS BETWEEN YOU AND A BROKER SHOULD BE IN WRITING AND CLEARLY ESTABLISH:

- The broker's duties and responsibilities to you, and your obligations under the representation agreement.
- Who will pay the broker for services provided to you, when payment will be made and how the payment will be calculated.

LICENSE HOLDER CONTACT INFORMATION: This notice is being provided for information purposes. It does not create an obligation for you to use the broker's services. Please acknowledge receipt of this notice below and retain a copy for your records.

Cravey Real Estate Services, Inc.	0409080	matt@craveyrealestate.com	361.289.5168
Licensed Broker/Broker Firm Name or Primary Assumed Business Name	License No.	Email	Phone
Cravey Real Estate Services, Inc.	0203443	matt@craveyrealestate.com	361.289.5168
Designated Broker of Firm	License No.	Email	Phone
Matthew Cravey	0203443	matt@craveyrealestate.com	361.221.1915
Licensed Supervisor of Sales Agent/ Associate	License No.	Email	Phone
Lynann Pinkham	319336	lynann@craveyrealestate.com	361.288.3102
Sales Agent/Associate's Name	License No.	Email	Phone

Buyer/Tenant/Seller/Landlord Initials

Date

Regulated by the Texas Real Estate Commission

Information available at www.trec.texas.gov

TAR 2501

Cravey Real Estate Services, Inc., 5541 Bear Lane, Suite 240 Corpus Christi, TX 78405
Matthew Cravey

Phone: 361.289.5168301 Fax: 361.289.5442
Produced with zipForm® by zipLogix 18070 Fifteen Mile Road, Fraser, Michigan 48026 www.zipLogix.com

IABS 1-0
Untitled