



CROSSROAD  
VENTURES GROUP

# 1411 Secret Ravine Pkwy

ROSEVILLE, CA 95661



Coming Available  
September 1, 2025

Medical Office  
(Roseville)

916.788.9731

[crossroadventures.net](http://crossroadventures.net)

## Building Features

- Lease Rate: \$2.70 PSF / NNN
- Two Suites Available which are contiguous
- Suite 170 +/- 1,568 RSF
- Suite 180 +/- 1,003 RSF
- Can be combined for +/- 2,571 RSF
- Close Proximity to Numerous Amenities including The Galleria and The Fountains
- Near Sutter Roseville Medical Center
- Easy Access to I-80
- **Please Do Not Disturb Tenants**

Travis Esway

DRE #01961306

c: 916.768.6724

e: [tesway@crossroadventures.net](mailto:tesway@crossroadventures.net)

Jim Esway

DRE #00820384

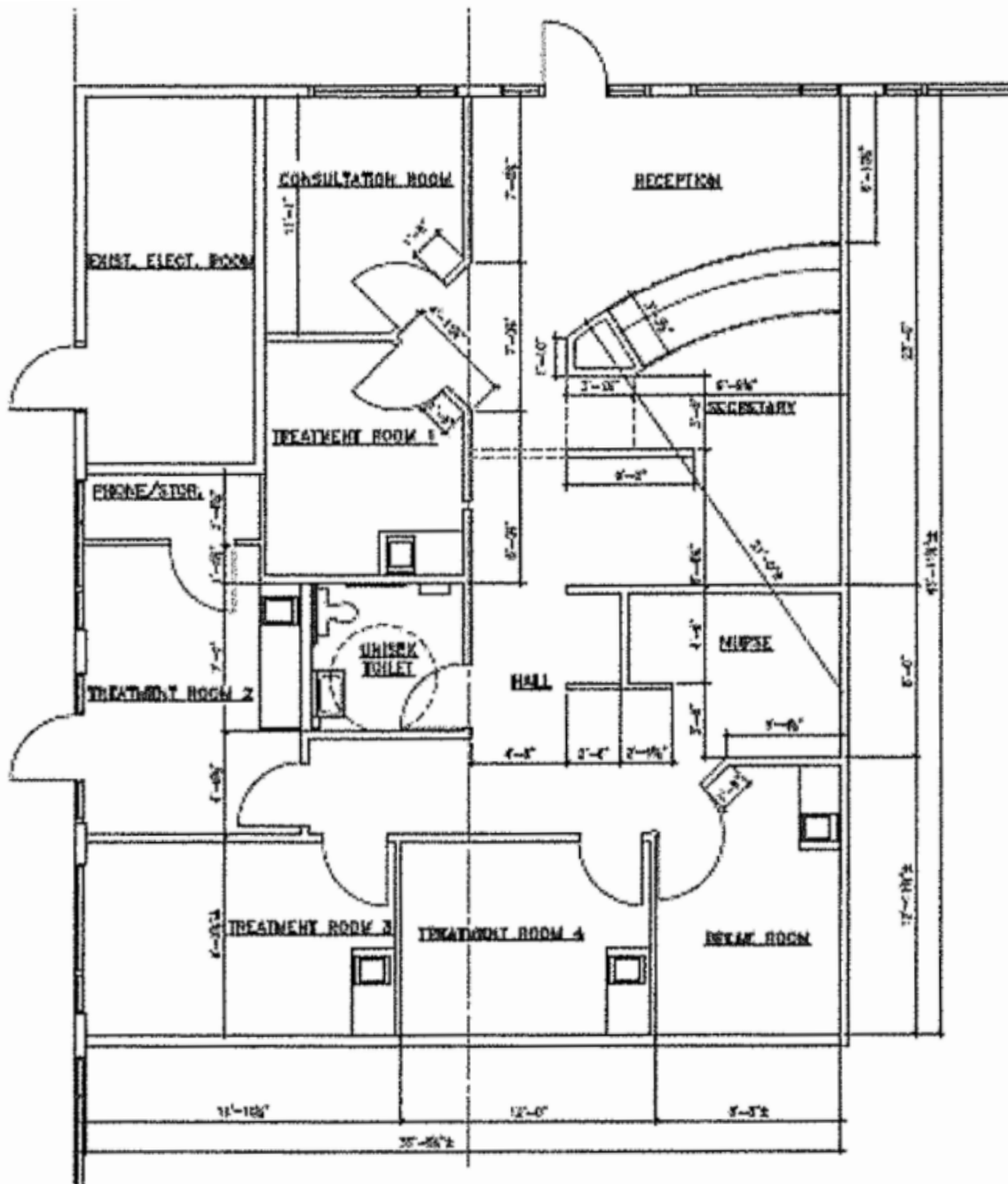
o: 916.788.9731

e: [jesway@crossroadventures.net](mailto:jesway@crossroadventures.net)

*your real estate compass.*

# 1411 Secret Ravine Pkwy

ROSEVILLE, CA 95678



SUITE 170

## SUITE 170 FLOOR PLAN

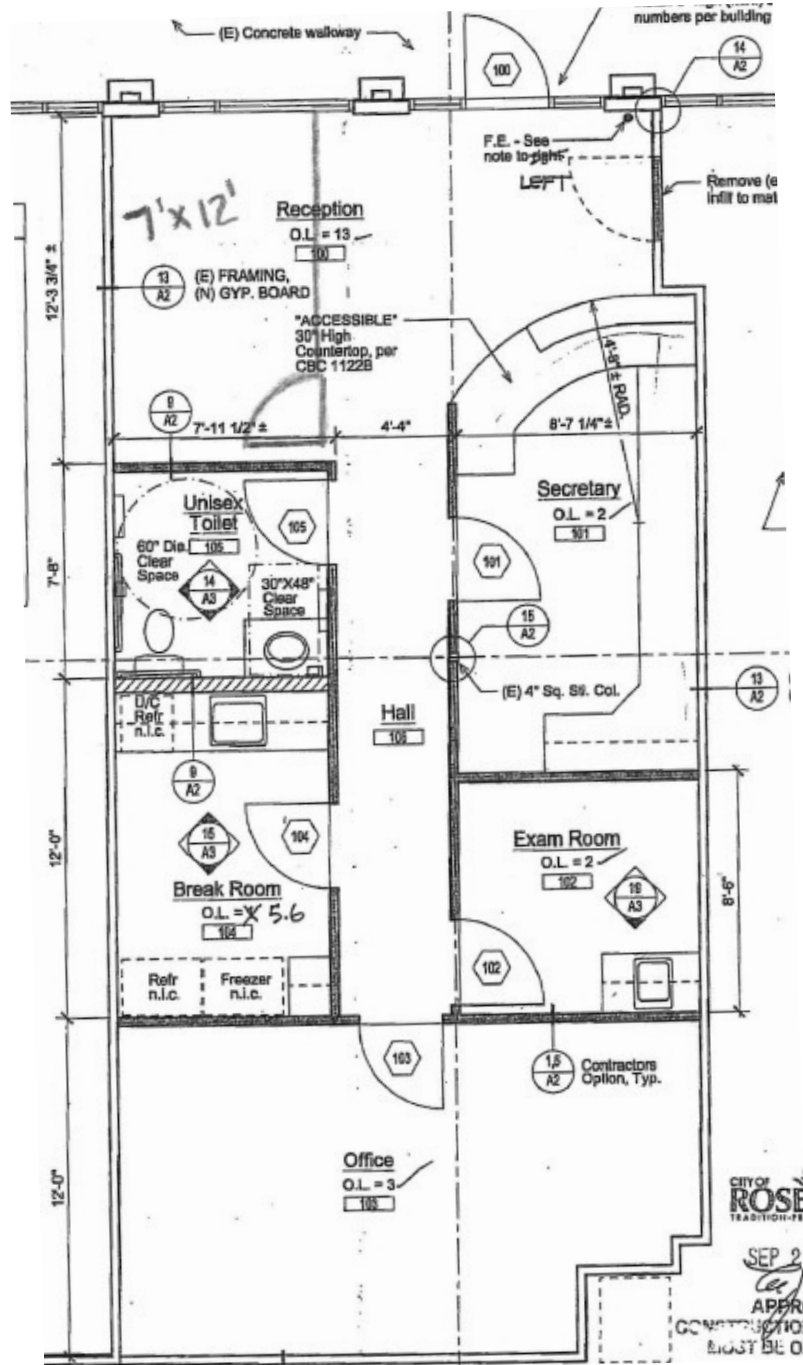
+/- 1,568 RSF



CROSSROAD  
VENTURES GROUP

# 1411 Secret Ravine Pkwy

ROSEVILLE, CA 95678



SUITE 180

## SUITE 180 FLOOR PLAN

+/- 1,003 RSF



CROSSROAD  
VENTURES GROUP



# 1411 Secret Ravine Pkwy

ROSEVILLE, CA 95678



## The Company

The focus of Crossroad Ventures Group is to provide unparalleled service to clients that require assistance with development, project management, construction management, commercial brokerage, residential brokerage and residential property management. We are a full service real estate company.

Crossroad Ventures Group combines over 100 years experience with a unique platform of specialized services. If you need to build a new project, manage a home or commercial building, or need a competent professional to assist in buying/leasing a building or home, Crossroad Ventures Group can provide the creative solutions to your critical decisions in commercial and residential real estate.

Broker makes no warranty or representation as to the accuracy or completeness of information provided by or to either party. Such data is submitted subject to errors, omissions, changing price, rental terms, withdrawal without notice, and any special listing conditions imposed by the principals.

**CROSSROAD**  
VENTURES GROUP