

4388

N CIVIC CENTER PLAZA SCOTTSDALE, AZ 85251

FOR LEASE



LEVROSE
COMMERCIAL REAL ESTATE

TCN
COMMERCIAL TRADING NETWORK

GROUND FLOOR OFFICE SPACE IN OLD TOWN

 [CLICK SUITE TO VIEW FLOOR PLAN](#)

LEASE RATE Suite 101: \$30.00/SF MG
*Tenant responsible for Janitorial and Electric

AVAILABLE Suite 101: ±1,000 SF

BUILDING SIZE ±2,500 SF

PROPERTY FEATURES

- New Flooring & Fresh Paint
- Updated Ceiling Tiles
- 2 Covered Reserved Spaces at \$40/mo per space
- LVT Flooring

SUITE 101



DENTIST/SALON/MEDICAL SPACE

Adam Enos, Advisor
aenos@levrose.com
480.508.7448

Jason Reddington, Partner
jreddington@levrose.com
480.289.4504

Keri Davies, Partner
kdavies@levrose.com
480.294.6572

This information has been secured from sources believed to be reliable, but no representations or warranties are made, expressed or implied, as to the accuracy of the information. References to square footage are approximate. Buyer and tenant must verify the information and bears all risk for any inaccuracies. All quoted prices are subject to change without notice.

4388

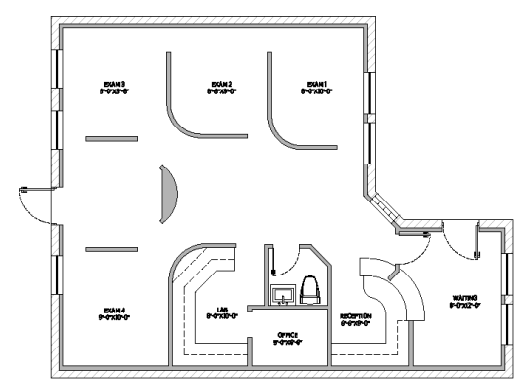
N CIVIC CENTER PLAZA
SCOTTSDALE, AZ 85251

FOR LEASE

GROUND FLOOR OFFICE/RETAIL SPACE



LEVROSE
COMMERCIAL REAL ESTATE



SUITE 101 FLOOR PLAN

CLICK TO VIEW



Adam Enos, Advisor
aenos@levrose.com
480.508.7448

Jason Reddington, Partner
jreddington@levrose.com
480.289.4504

Keri Davies, Partner
kdavies@levrose.com
480.294.6572