

# Industrial Space with High Visibility in West Chicago

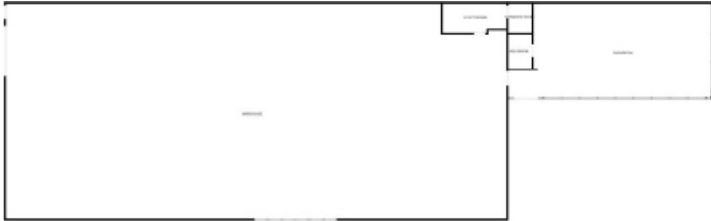
33W461 ROOSEVELT RD  
WEST CHICAGO, IL





## PROPERTY SUMMARY

ASKING LEASE RATE:	\$10.00 PSF MG
AVAILABLE SF:	7,554 SF
YEAR BUILT:	1970
BUILDING SF:	7,554 SF
CEILING HEIGHT:	13ft

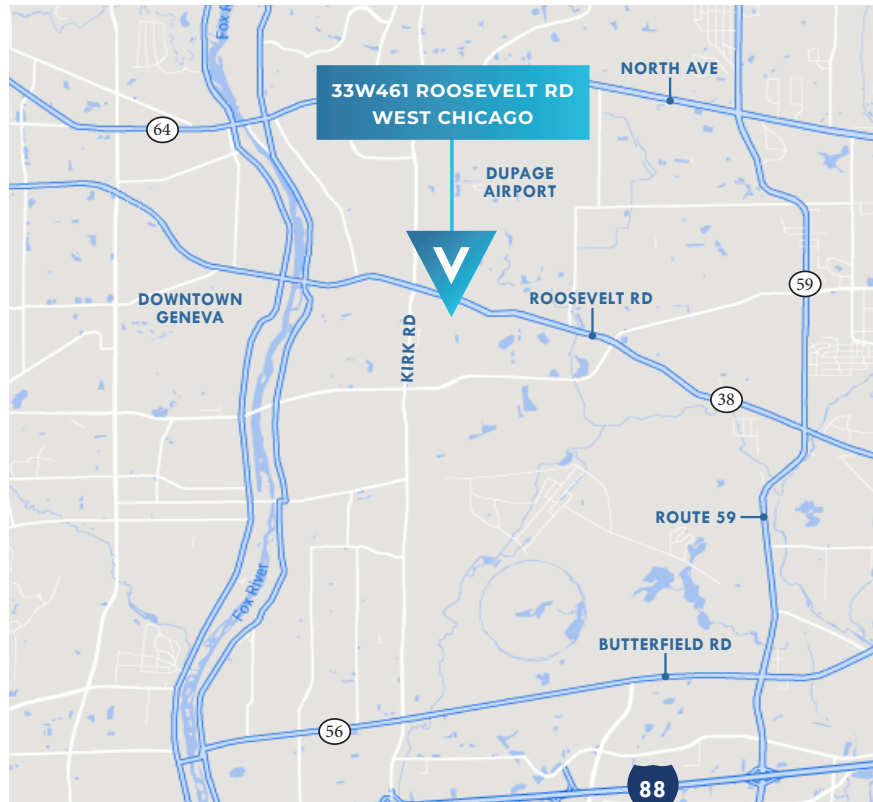


## BUILDING HIGHLIGHTS

- ▶ Frequently Traveled Roosevelt Rd with Signage Opportunity
- ▶ 1,225 SF of Office / Showroom
- ▶ 6,329 SF Warehouse with 13ft Clear Ceilings & Overhead Door
- ▶ Abundant Parking Behind and on the Side of Building
- ▶ Zoned B3 Business Allowing for Many Different Uses & Potential for Special Uses Upon Application
- ▶ Good Power with 200 amp 3-Phase & an Additional 100 amp 3-Phase

## AREA AMENITIES

- ▶ Access to Numerous Arterial Roads
- ▶ Located in Growing Warehouse / Distribution Corridor
- ▶ Minutes from DuPage Airport
- ▶ Close Proximity to I-88 / Farnsworth Rd Exit



### CALL OR TEXT FOR MORE INFO:

**RYAN MOEN, SIOR**  
PRINCIPAL  
DESIGNATED MANAGING BROKER  
630.480.6346  
RMoen@VersaRES.com

**STEVEN REA**  
ASSOCIATE  
630.468.1780  
SRea@VersaRES.com

**JOHN MILLNER, CCIM**  
PRINCIPAL  
630.480.6342  
JMillner@VersaRES.com

**VERSA**  
REAL ESTATE SERVICES