



North Webster Parish Industrial District Site

US Highway 371
Cullen, LA 71021



SITE INFORMATION

ACRES AVAILABLE:

61.33 Acres

PROPERTY TYPE:

Industrial with Rail Access

TERRAIN:

Flat

SUB DIVIDABLE:

Yes

PRIOR/CURRENT USE:

Agricultural

OWNER:

North Webster Parish Industrial District

NEAREST MSA:

Shreveport/Bossier City

Population: 445,142

Distance: 0 miles

COORDINATES:

32.960905, -93.451290



UTILITIES

ELECTRICITY:

Entergy

NATURAL GAS:

Centerpoint Energy

WATER:

North Webster Parish Industrial District

SEWER:

North Webster Parish Industrial District

TELECOM:

CenturyLink

FIBER OPTIC:

CenturyLink

TRANSPORTATION LOGISTICS

INTERSTATE:

I-20

Distance: 27.7 miles

HIGHWAY:

US-371

Distance: Adjacent to Site

RAIL:

Kansas City Southern Railroad

Distance: Adjacent to Site

AIRPORT:

Shreveport Regional Airport (SHV)

Distance: 59.9 miles

PORT:

Port of Shreveport-Bossier City

Distance: 68.4 miles



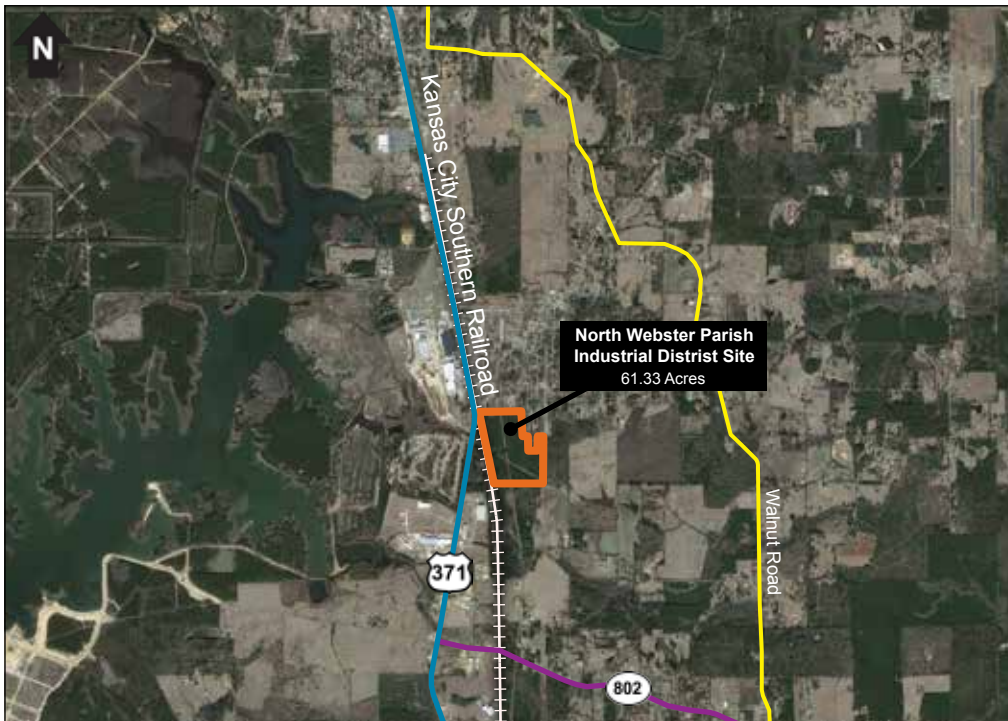
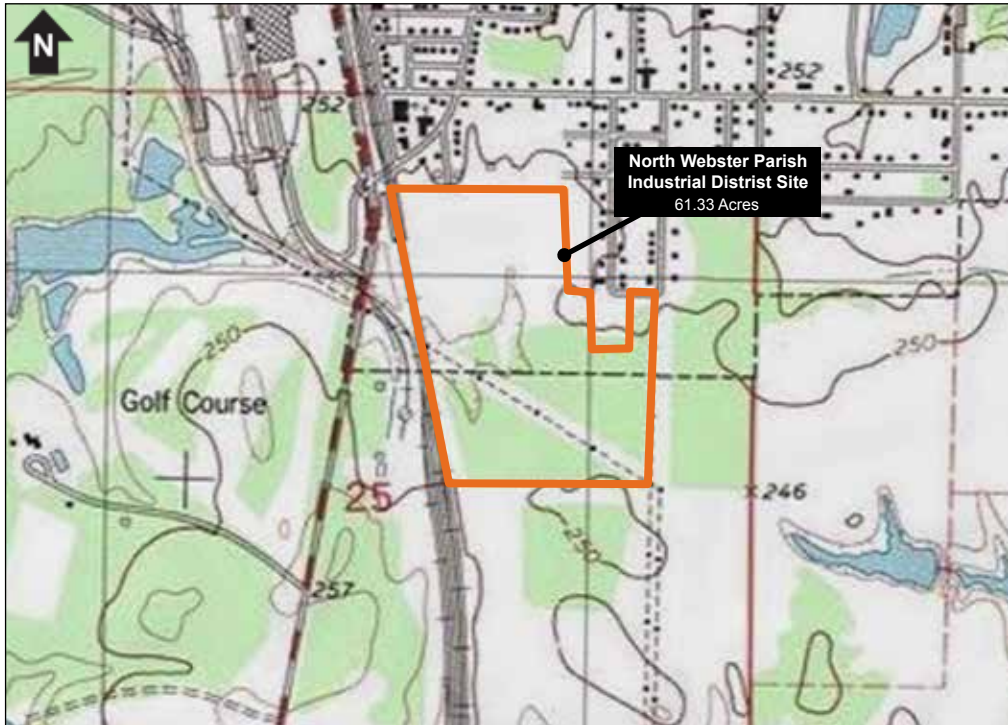
Site Located in Webster Parish

FIND OUT MORE: OpportunityLouisiana.com
800.450.8115



North Webster Parish Industrial District Site

US Highway 371
Cullen, LA 71021



FIND OUT MORE: OpportunityLouisiana.com
800.450.8115