

Available Medical Office Space for Lease

BONNEY LAKE MOB

10004 204th Ave E., Bonney Lake, WA 98391

For leasing information:

Lael Crompton

Sr. Director, Leasing

Phone: 858-794-1900

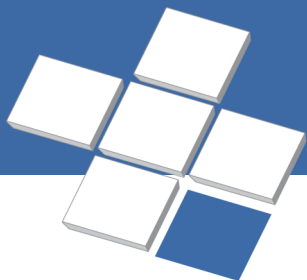
lcrompton@pmbres.com

www.pmbres.com

CA Lic. 01871298



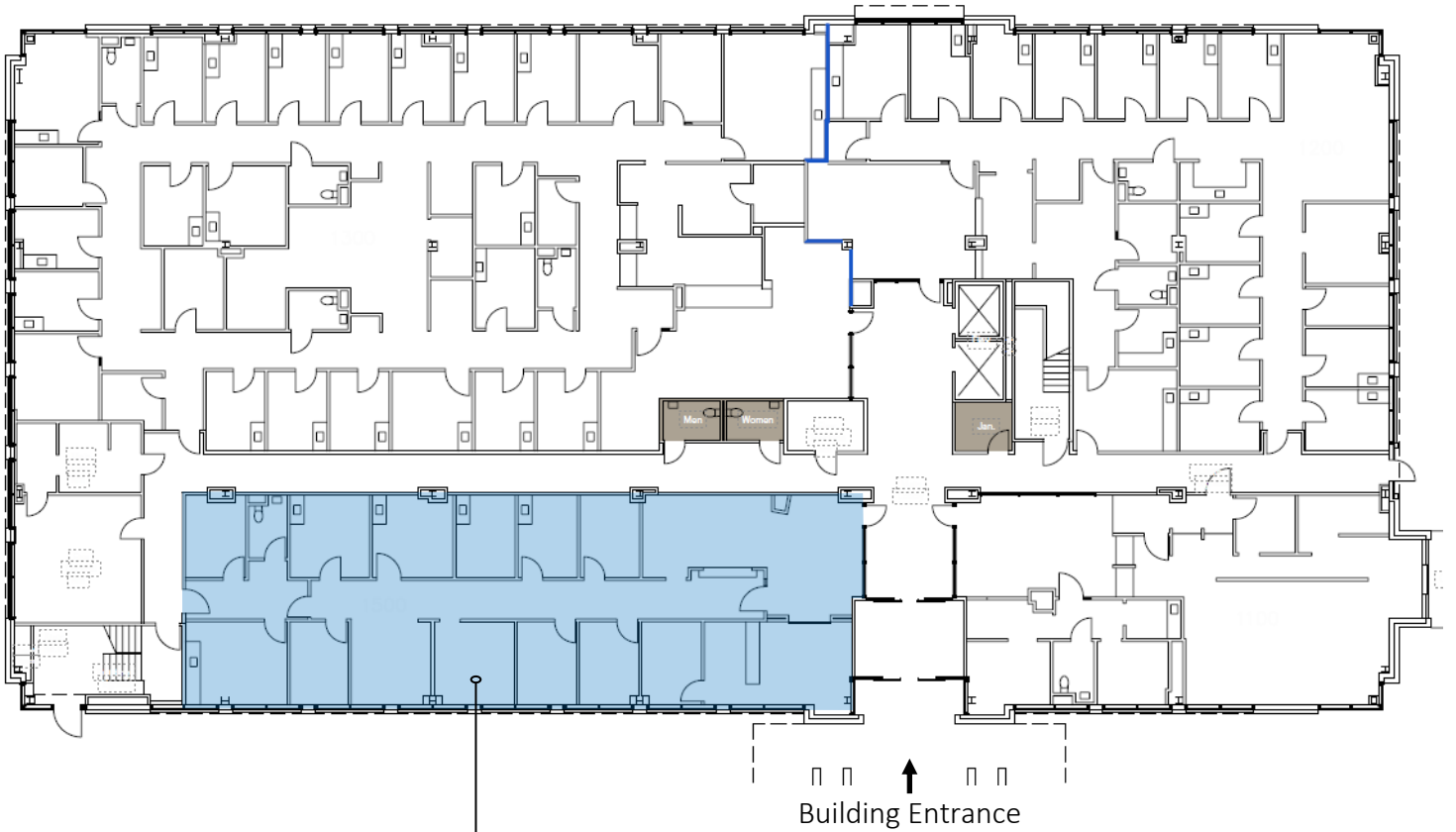
- Enhance Physician Recruitment
- Improve Patient Comfort & Accessibility
- Covered Patient Drop-Off Area
- A Quality Environment For Your Practice
- 55,991 SF Three Story Class "A" Medical Office Building
- Tenant Improvement Allowance Available



PMB
Real Estate Services
Real Estate Management Solutions for Healthcare



FIRST FLOOR AVAILABILITIES



Suite 1500
3,402 RSF
Available:
September 1, 2026

