

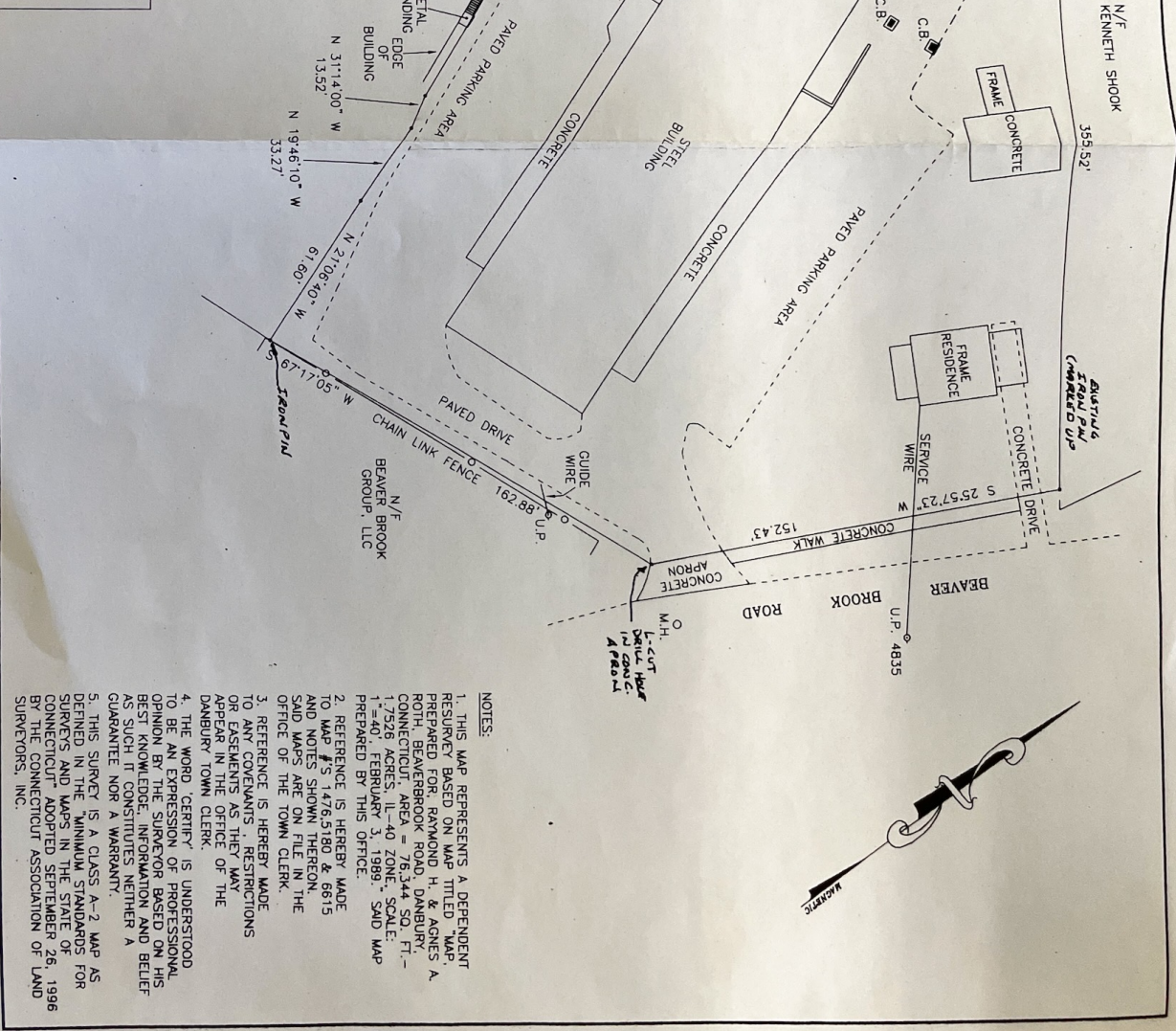
ZONING LOCATION SURVEY MAP
 PREPARED FOR
HYE DANBURY, LLC
16 BEAVER BROOK ROAD
DANBURY, CONNECTICUT

AREA: 76,344 SQ. FT. - 1.7526 ACRES
 IL-40 ZONE SCALE: 1"=40' MARCH 7, 2006

TO THE BEST OF MY KNOWLEDGE AND BELIEF THIS MAP IS SUBSTANTIALLY CORRECT AS NOTED HEREON.

David L. Ryan
 DAVID L. RYAN L.S. - C.C. #8175

DAVID L. RYAN
 LAND SURVEYING
 AND
 SITE PLANNING
 (203) 792-7615
 182 GRASSY PLAIN STREET
 BETHEL, CONNECTICUT 06801



NOTES:

1. THIS MAP REPRESENTS A DEPENDENT RESURVEY BASED ON MAP TITLED "MAP PREPARED FOR DANBURY, LLC, 16 BEAVER BROOK ROAD, DANBURY, CONNECTICUT, AREA = 76,344 SQ. FT. - 1.7526 ACRES, IL-40 ZONE, SCALE: 1"=40', FEBRUARY 3, 1999", SAID MAP PREPARED BY THIS OFFICE.
2. REFERENCE IS HEREBY MADE TO MAP #15 1476-5180 & 6615 AND NOTES SHOWN THEREON. SAID MAPS ARE ON FILE IN THE OFFICE OF THE TOWN CLERK.
3. REFERENCE IS HEREBY MADE TO ANY COVENANTS, RESTRICTIONS OR EASEMENTS AS THEY MAY APPEAR IN THE OFFICE OF THE DANBURY TOWN CLERK.
4. THE WORD "CERTIFY" IS UNDERSTOOD TO BE AN EXPRESSION OF PROFESSIONAL OPINION BY THE SURVEYOR BASED ON HIS BEST KNOWLEDGE, INFORMATION AND BELIEF AS SUCH IT CONSTITUTES NEITHER A GUARANTEE NOR A WARRANTY.
5. THIS SURVEY IS A CLASS A-2 MAP AS DEFINED IN THE "MINIMUM STANDARDS FOR SURVEY'S AND MAPS IN THE STATE OF CONNECTICUT" ADOPTED SEPTEMBER 26, 1996 BY THE CONNECTICUT ASSOCIATION OF LAND SURVEYORS, INC.