

4400 GLENMEADE LANE  
AUBURN HILLS, MICHIGAN

INDUSTRIAL FOR LEASE  
10,025 Square Feet Available



**SIGNATURE  
ASSOCIATES**  
KNOW SIGNATURE | KNOW RESULTS

**GOOD FREESTANDING WAREHOUSE**



## PROPERTY FEATURES

- 10,025 square feet available
- 2,795 square feet of office
- 20' clear height
- (1) 12x14 grade level door, (1) truckwell
- 1.24 acres
- Zoned Light Industrial
- 32 parking spaces
- 1,000 amps, 240 volts power
- Will remodel to suit
- Lease Rate: \$9.50/sq. ft. NNN



For more information, please contact:

**PAUL HOGE**  
(248) 948 0103  
paulhoge@signatureassociates.com

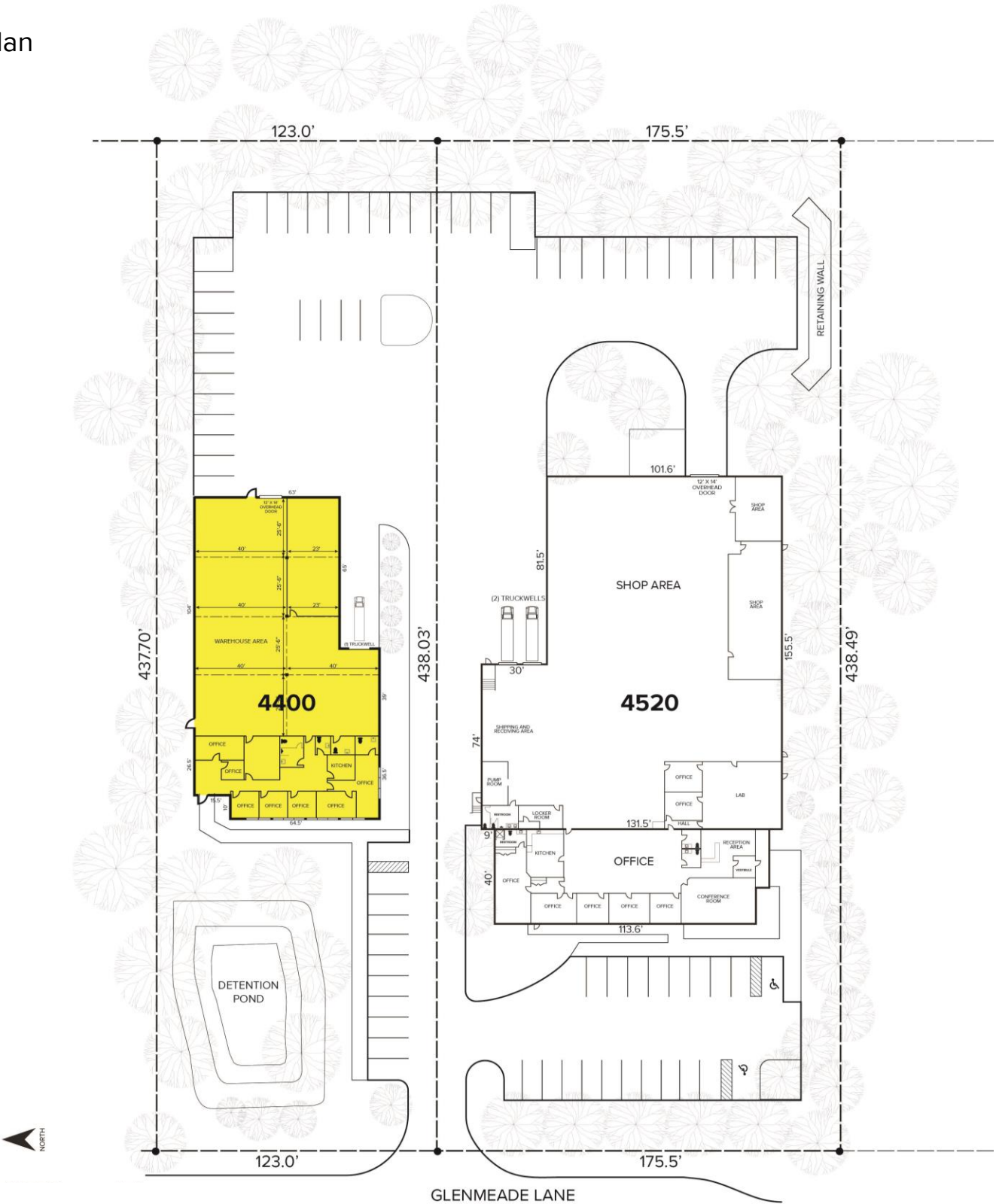
**SIGNATURE ASSOCIATES**  
One Towne Square, Suite 1200  
Southfield, MI 48076  
www.signatureassociates.com

# 4400 Glenmeade Lane – Auburn Hills, MI

Industrial For Lease

10,025  
Square Feet  
AVAILABLE

## Site Plan



For more information, please contact:

**PAUL HOGGE**  
(248) 948 0103  
paulhoge@signatureassociates.com

**SIGNATURE ASSOCIATES**  
One Towne Square, Suite 1200  
Southfield, MI 48076  
www.signatureassociates.com

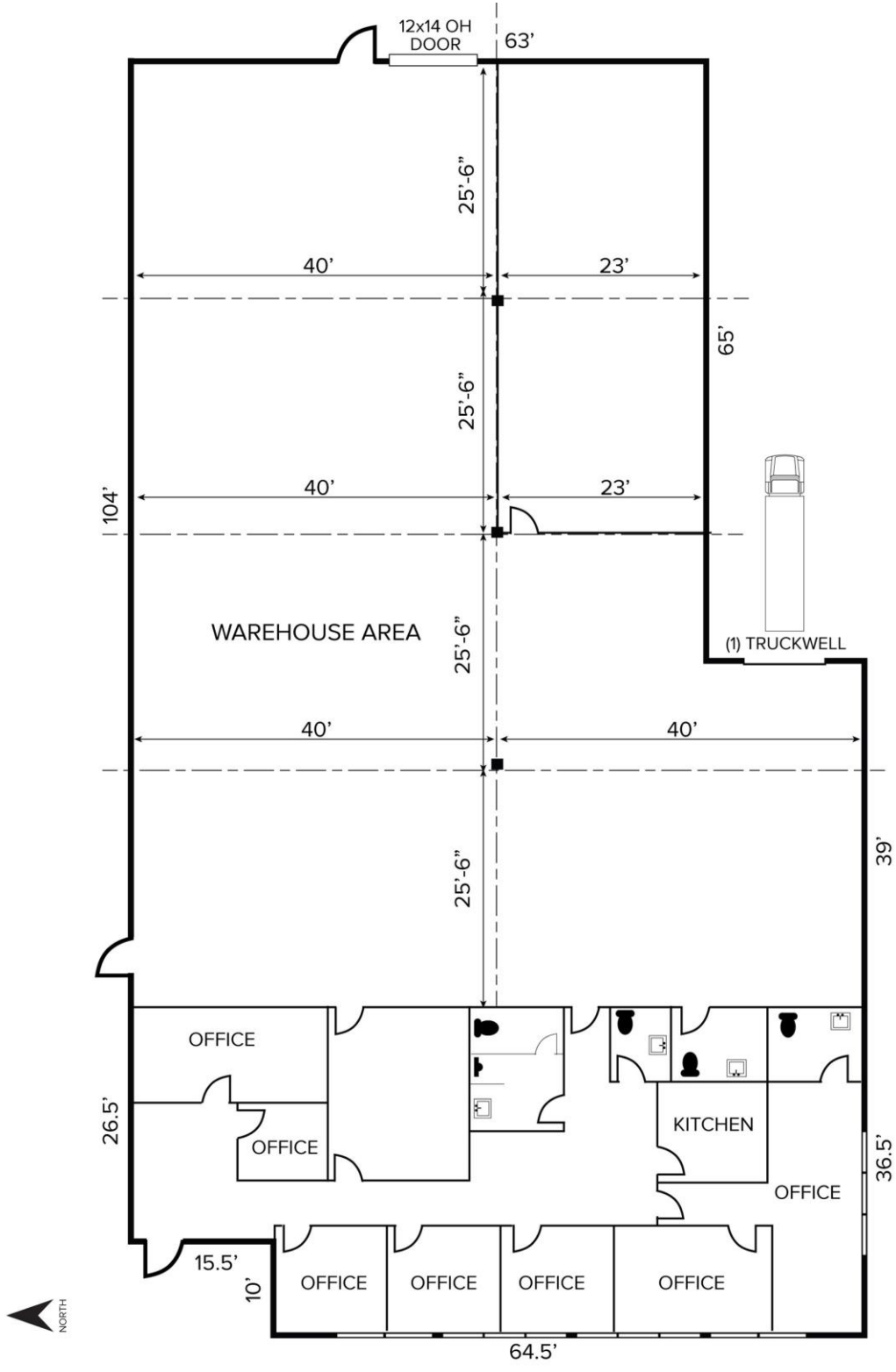
Information is subject to verification and no liability for errors or omissions is assumed. Price is subject to change and listing withdrawal.

# 4400 Glenmeade Lane – Auburn Hills, MI

Industrial For Lease

10,025  
Square Feet  
AVAILABLE

## Floor Plan



For more information, please contact:

**PAUL HOGE**  
(248) 948 0103  
paulhoge@signatureassociates.com

**SIGNATURE ASSOCIATES**  
One Towne Square, Suite 1200  
Southfield, MI 48076  
www.signatureassociates.com

Information is subject to verification and no liability for errors or omissions is assumed. Price is subject to change and listing withdrawal.

# 4400 Glenmeade Lane – Auburn Hills, MI

Industrial For Lease

10,025  
Square Feet  
AVAILABLE

Aerial



For more information, please contact:

**PAUL HOGE**  
(248) 948 0103  
paulhoge@signatureassociates.com

**SIGNATURE ASSOCIATES**  
One Towne Square, Suite 1200  
Southfield, MI 48076  
www.signatureassociates.com