

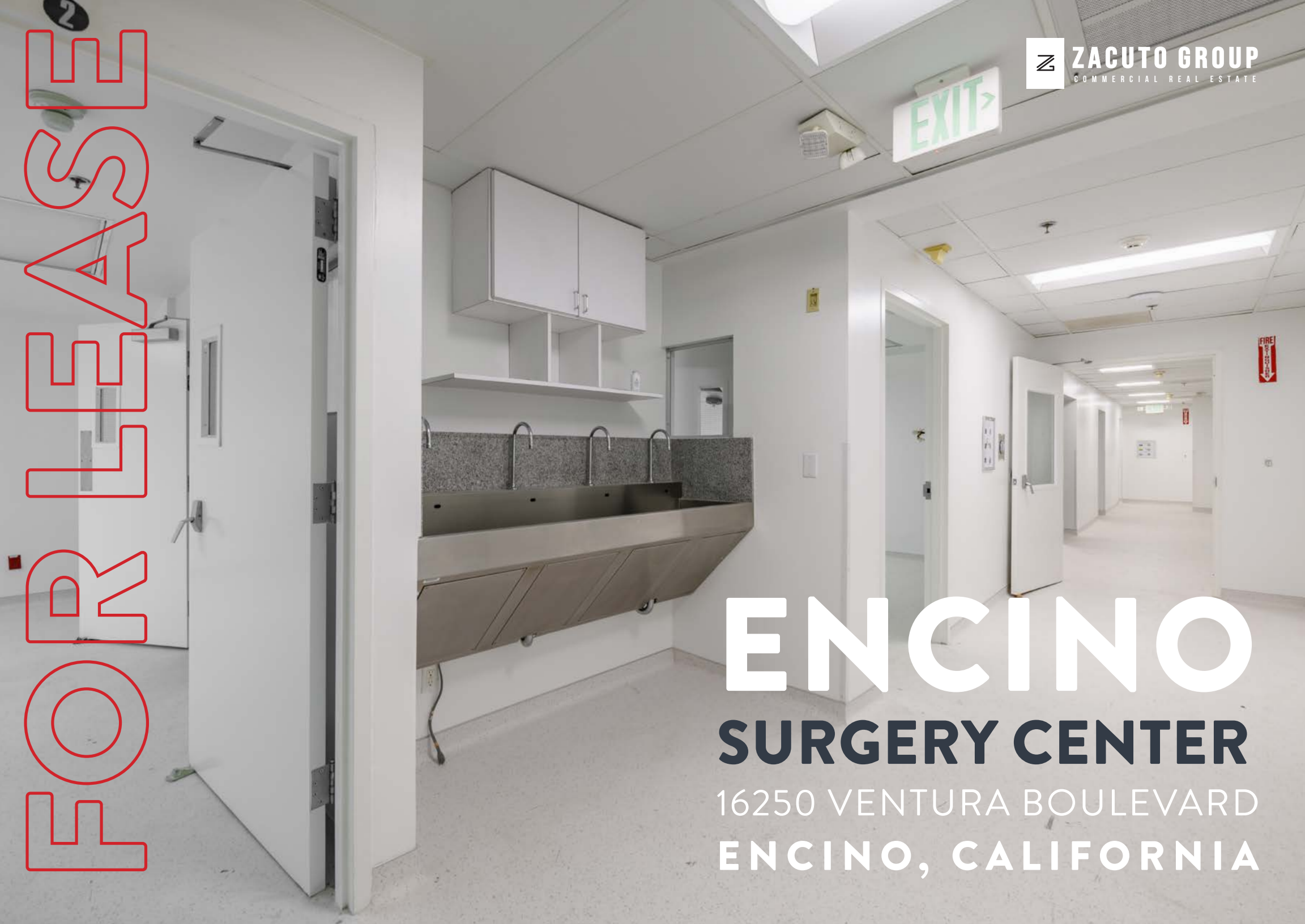
WE
S
A
E
L
E
R
O
F

EXIT

ENCINO

SURGERY CENTER

16250 VENTURA BOULEVARD
ENCINO, CALIFORNIA



DETAILS

16250 VENTURA BOULEVARD
ENCINO, CA 91436

SIZE

3,001 - 4,919 SF

TERM

5 years +

RATE

Negotiable

PARKING

\$100/car/month

GROUND LEVEL SURGERY CENTER

Ground Level suite with formal reception area and multiple exit/entry points.

- 3,001 SF Surgery Center with option to lease 784 SF - 1,918 SF of additional contiguous medical office space
- 2 dedicated operating rooms
- Recovery rooms
- Multiple ensuite restrooms
- Reception area
- General medical offices

FLEXIBLE LAYOUT

Multiple configurations/sizes possible.

ENCINO MEDICAL CORRIDOR

Across the street from Encino Medical Hospital Center. Adjacent to various medical offices and facilities.



LISTING TEAM



JAKE ZACUTO

Managing Director

310.469.9012

jake@zacutogroup.com

BRE #01377441

LEOR BINSHTOCK

Executive Vice President

310.469.9014

leor@zacutogroup.com

BRE #01773798

BENJI GRIBNAU

Vice President

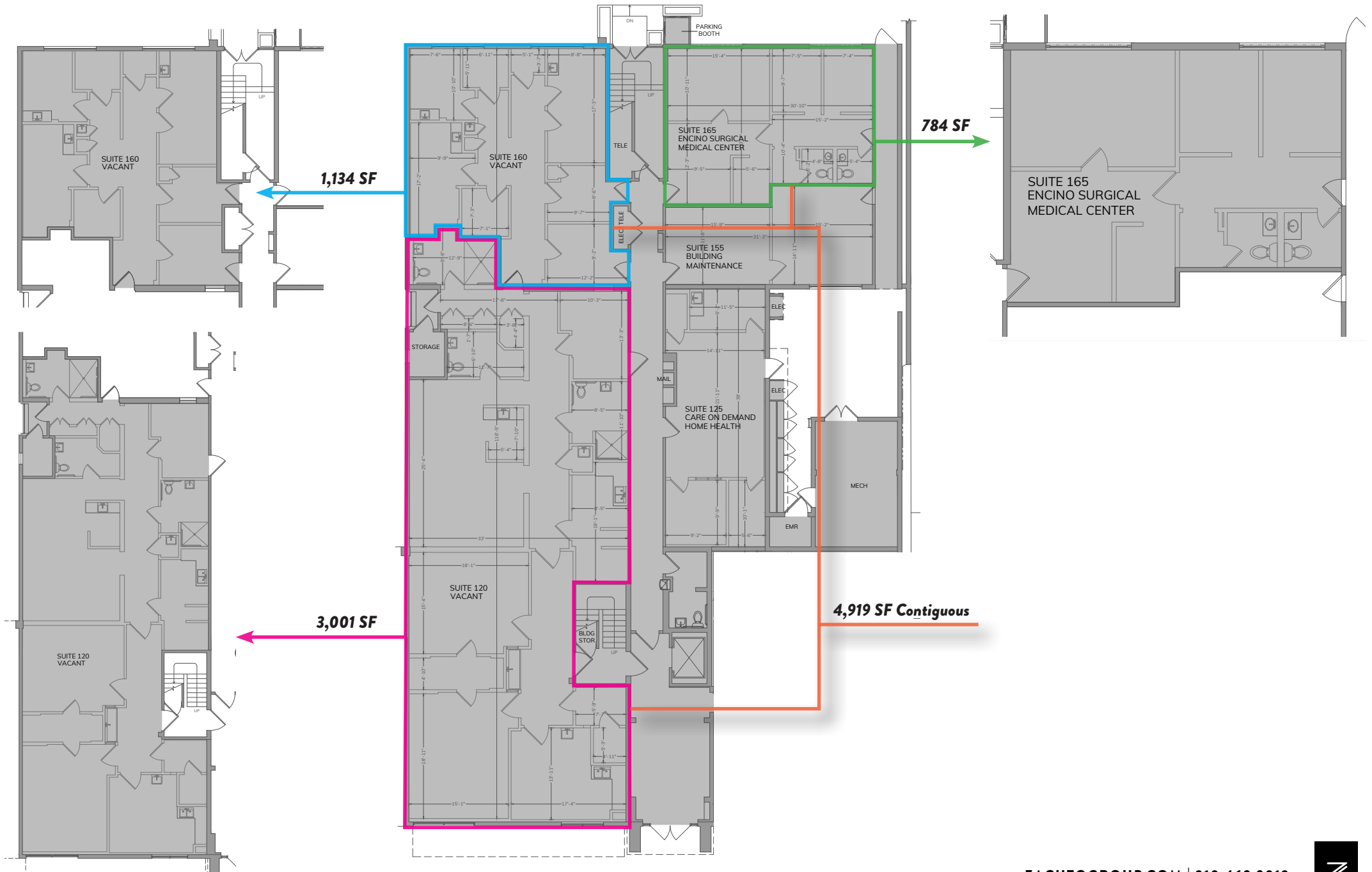
858.337.4991

benji@zacutogroup.com

BRE #02069968

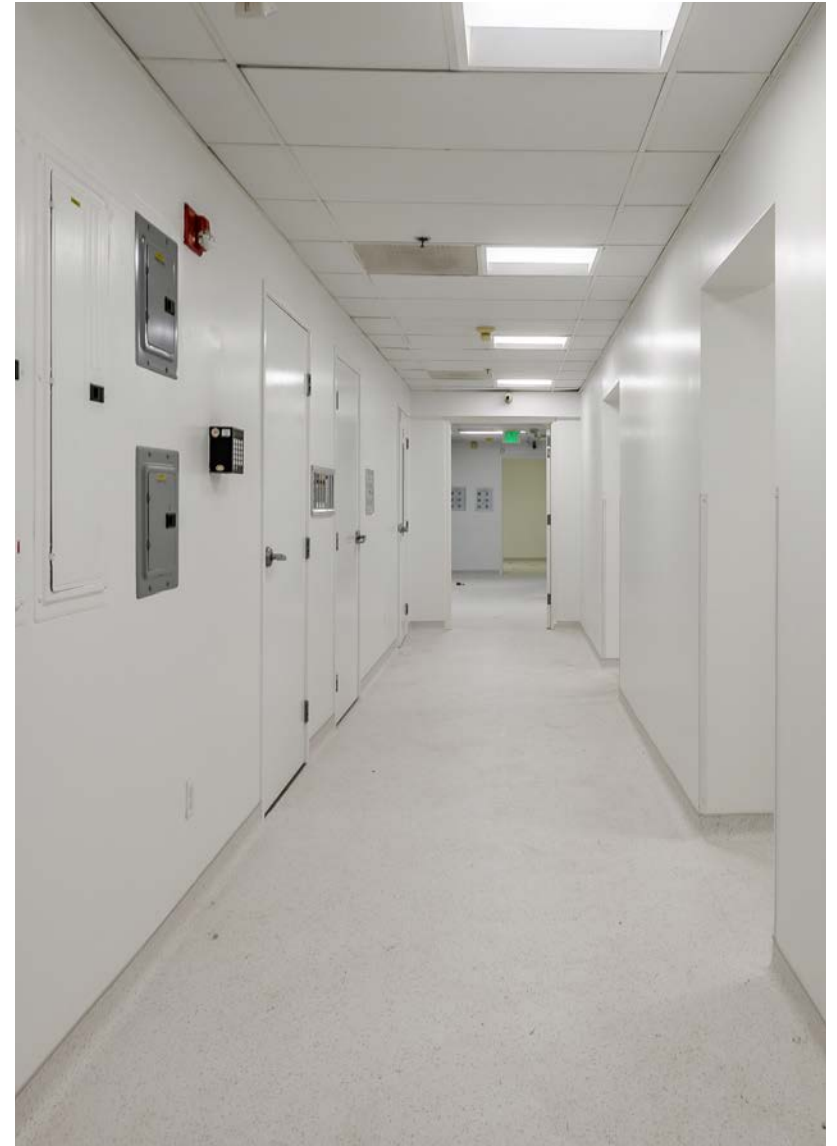
FLOOR PLANS

16250 VENTURA BOULEVARD, ENCINO, CA 91436



LEASE

16250 VENTURA BOULEVARD, ENCINO, CA 91436



MEDICAL OFFICE INTERIOR

16250 VENTURA BOULEVARD
ENCINO, CALIFORNIA



LEASE

16250 VENTURA BOULEVARD, ENCINO, CA 91436



16250 VENTURA BOULEVARD
ENCINO, CALIFORNIA



Providence | Cedars Sinai

Michaels

Yogurtland

Philly's Best
CHEESESTEAKS

Smart
& Final

EQUINOX

CALIFORNIA
U S
101

16250 VENTURA
BOULEVARD



CVS pharmacy



FedEx
Corporation

sweetgreen

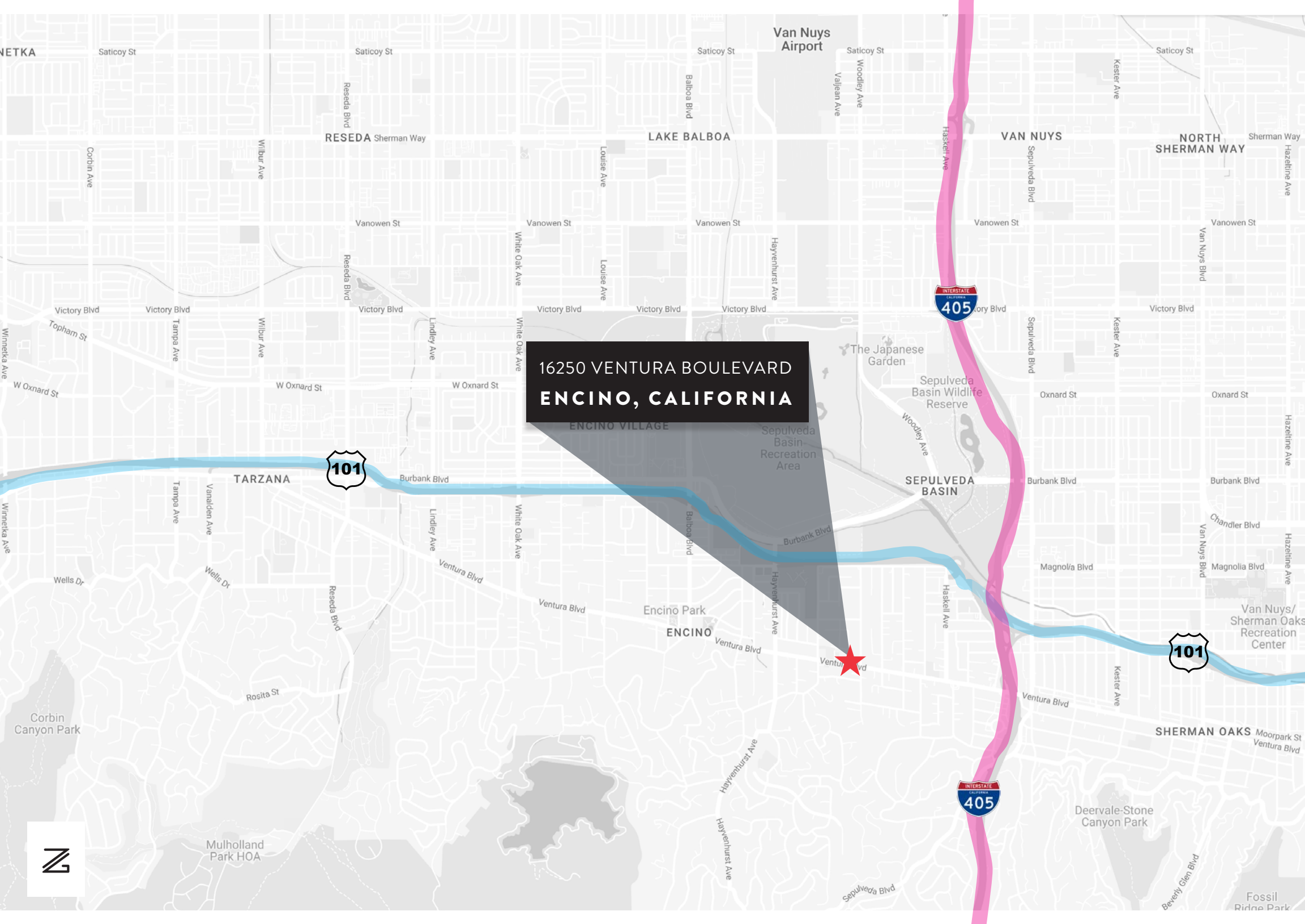
Katsu-ya

Gelson's

Mendocino
Farms

Encino Hospital
Medical Center





16250 VENTURA BOULEVARD
ENCINO, CALIFORNIA



16250 VENTURA BOULEVARD
ENCINO, CALIFORNIA



JAKE ZACUTO

Managing Director

310.469.9012

jake@zacutogroup.com

BRE #01377441

LEOR BINSHTOCK

Executive Vice President

310.469.9014

leor@zacutogroup.com

BRE #01773798

BENJI GRIBNAU

Vice President

858.337.4991

benji@zacutogroup.com

BRE #02069968



ZACUTOGROUP.COM | 310.469.9300

No warranty, express or implied, is made as to the accuracy of the information contained herein. This information is submitted subject to errors, omissions, change of price, rental or other conditions, withdrawal without notice. All parties who receive this material should not rely on it, but should use it as a starting point of analysis, and should independently confirm the accuracy of the information contained herein through a due diligence review of the books, records, files and documents that constitute reliable sources of the information described herein. Logos and images are for identification purposes only and may be trademarks of their respective companies. All terms provided are approximate. Leasee to verify. 10/2024