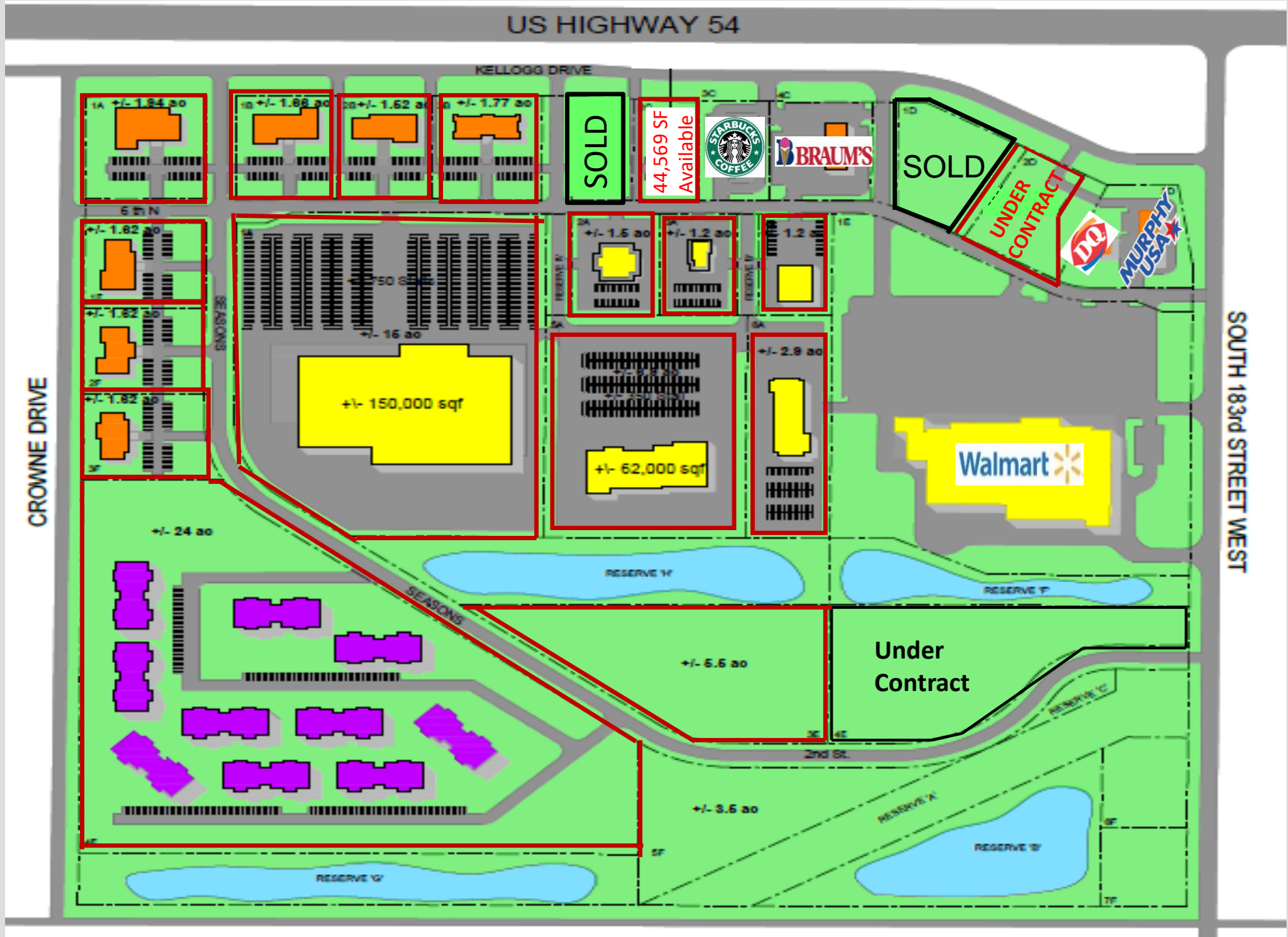


**Goddard Galleria - West Kellogg (US Hwy 54) & South 183rd Str West
in Goddard, KS**



Spaces outlined in RED are available



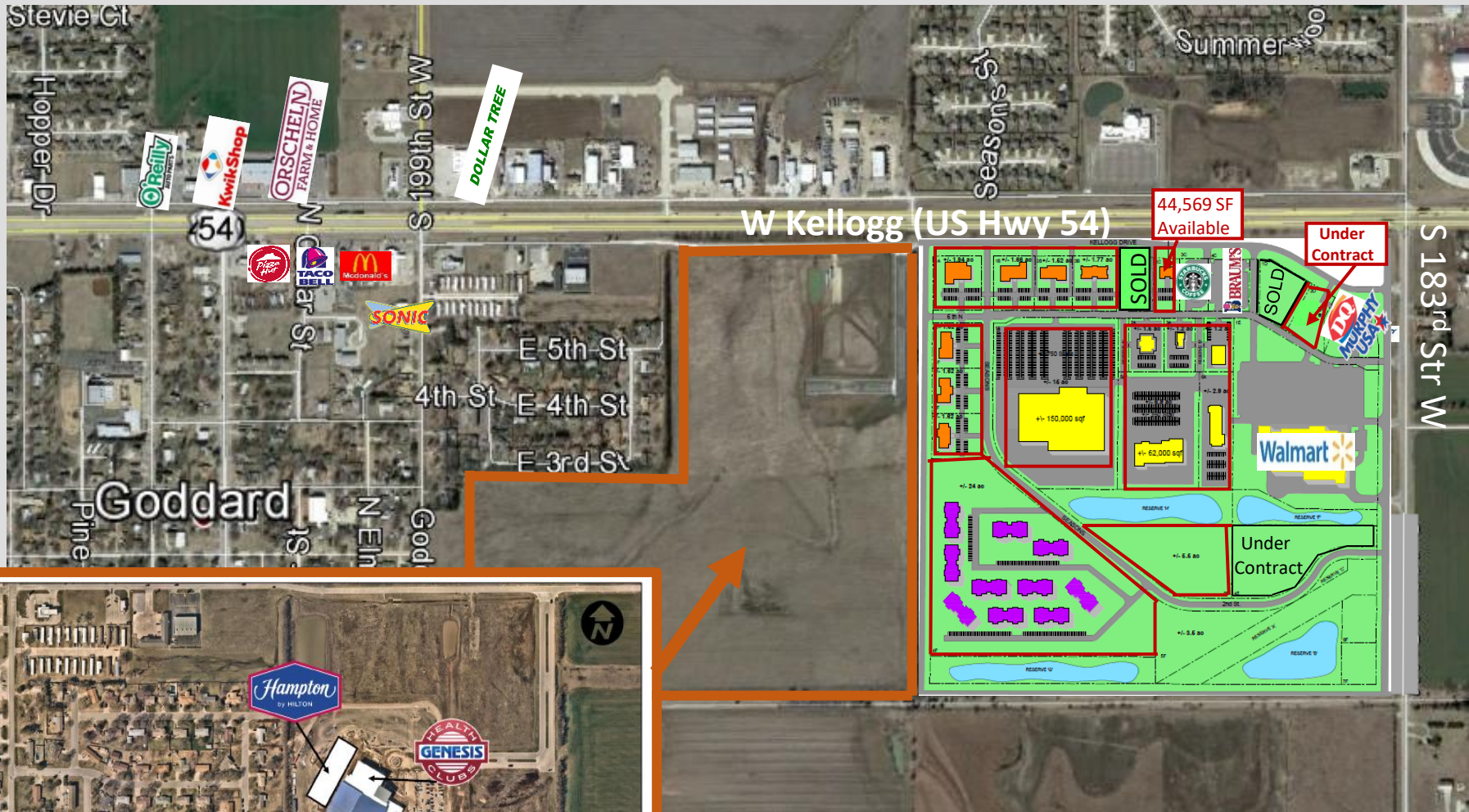
Dwayne M. Dugan (316) 619-3547

8110 E. 32nd Street N, #150 Wichita KS 67226 (316) 634-2600

183rd Street West & West Kellogg
Goddard Kansas

Goddard Galleria

For Lease or Sale



Great for restaurants, and retail shops
Situating between Star Bond Development
Walmart Utilities Available



Dwayne M. Dugan (316) 619-3547

8110 E 32nd Str N #150 Wichita KS 67226 (316) 634-2600

Goddard is a fast growing community with an excellent school district

Five Mile Radius

2024 Estimated population 37,111

2024 Estimated average household income \$107,408

2024 Estimated Households 12,840

